

Model No. HBTV-32D03HD
HBTV-42D03FD

Revisão 2



 **ATENÇÃO**

Este manual técnico é de uso exclusivo da Rede Autorizada H-Buster. Não existem peças ou partes que possam ser reparados pelo consumidor final, sob riscos de choque elétrico, causando ferimentos graves. É proibida a distribuição, comercialização ou cópia deste documento. Sujeito a modificações.

CONTENTS

Chapter 1. General Information

- 1-1. General Guidelines 3
- 1-2. Important Notice 3
 - 1-2-1. Follow the regulations and warnings 3
 - 1-2-2. Be careful to the electrical shock 3
 - 1-2-3. Electro static discharge (ESD)..... 3
 - 1-2-4. About lead free solder (PbF)..... 4
 - 1-2-5. Use the genuing parts (specified parts) 4
 - 1-2-6. Safety check after repairment..... 4
 - 1-2-7. Ordering Spare Parts..... 6
 - 1-2-8. Photo used in this manual 6
- 1-3. How to Read this Service Manual 7
 - 1-3-1. Using icons 7

Chapter 2. Specification

- 2-1. Specification list..... 8
- 2-2. External pictures (four faces) 9

Chapter 3. Disassemble and Assemble

- 3-1. HBTV-32D03HD 13
- 3-2. HBTV-42D03FD 15

Chapter 4. Location of Controls and Components

- 4-1. Board Location..... 17
- 4-2. Main Board & AV Board 18
 - 4-2-1. Function Description 18
 - 4-2-2. Connector definition 18
- 4-3. Power Supply Board..... 20
 - 4-3-1. Function description 20
 - 4-3-2. Connector definition..... 20
- 4-4. LCD Panel..... 22
 - 4-4-1. Function Description: Display the signal 22
 - 4-4-2. Connector definition 22

Chapter 5. Operation Instructions

- 5-1. Get To Know Your TV 24
- 5-2. Get To Know Your Remote Control..... 26

Chapter 6. Electrical Parts

6-1. Block Diagram	35
6-2. Circuit Diagram	36

Chapter 7. Measurements and Adjustments

7-1. Service Mode (Modo de Serviço)	47
7-1-1.How to enter into Service Mode (como entrar no modo de serviço)	47
7-1-2.How to exit (sair do modo de serviço)	47
7-2. Measurements and Adjustments	47
7-2-1. Memory Resetting (Reinicializando a memória)	47

Chapter 8. Firmware Update (Atualização de Programa)

8-1. Initial Care (Cuidados Iniciais)	48
8-2. Initial Procedures (Procedimentos Iniciais).....	48
8-3. Updating firmware (Atualizando o programa).....	49
8-4. Firmware Update Diagram (Diagrama da Atualização do programa)	50

Chapter 9. Troubleshooting (guia de defeitos)

9-1. Power Supply Board Failure Check.....	51
9-2. Mainboard Failure Check.....	52

Chapter 10. Exploded View and Parts List

10-1. HBTV-32D03HD	53
10-2. HBTV-42D03FD	55

Chapter 1. General Information

1-1. General Guidelines

When servicing, observe the original lead dress. If a short circuit is found, replace all parts which have been overheated or damaged by the short circuit.

After servicing, see to it that all the protective devices such as insulation barriers, insulation papers shields are properly installed.

After servicing, make the following leakage current checks to prevent the customer from being exposed to shock hazards.

- 1) Leakage Current Cold Check
- 2) Leakage Current Hot Check
- 3) Prevention of Electro Static Discharge (ESD) to Electrostatically Sensitive

1-2. Important Notice

1-2-1. Follow the regulations and warnings

Most important thing is to list up the potential hazard or risk for the service personnel to open the units and disassemble the units. For example, we need to describe properly how to avoid the possibility to get electrical shock from the live power supply or charged electrical parts (even the power is off).



This symbol indicates that high voltage is present inside. It is dangerous to make any kind of contact with any inside part of this product.



This symbol indicates that there are important operating and maintenance instructions in the literature accompanying the appliance.

1-2-2. Be careful to the electrical shock

To prevent damage which might result in electric shock or fire, do not expose this TV set to rain or excessive moisture. This TV must not be exposed to dripping or splashing water, and objects filled with liquid, such as vases, must not be placed on top of or above the TV.

1-2-3. Electro static discharge (ESD)

Some semiconductor (solid state) devices can be damaged easily by static electricity. Such components commonly are called Electrostatically Sensitive (ES) Devices. The following techniques should be used to help reduce the incidence of component damage caused by electrostatic discharge (ESD).

Electrostatically Sensitive (ES) Devices

Some semiconductor (solid-state) devices can be damaged easily by static electricity. Such components commonly are called Electrostatically Sensitive (ES) Devices. Examples of typical ES devices are integrated circuits and some field-effect transistors and semiconductor "chip" components. The following techniques should be used to help reduce the incidence of component damage caused by static by static electricity.

1. Immediately before handling any semiconductor component or semiconductor-equipped assembly, drain off any electrostatic charge on your body by touching a known earth ground. Alternatively, obtain and wear a commercially available discharging wrist strap device, which should be removed to prevent potential shock reasons prior to applying power to the unit under test.

2. After removing an electrical assembly equipped with ES devices, place the assembly on a conductive surface such as aluminum foil, to prevent electrostatic charge buildup or exposure of the assembly.

1-2-4. About lead free solder (PbF)

This product is manufactured using lead-free solder as a part of a movement within the consumer products industry at large to be environmentally responsible. Lead-free solder must be used in the servicing and repairing of this product.

1-2-5. Use the genuening parts (specified parts)

Special parts which have purposes of fire retardant (resistors), high-quality sound (capacitors), low noise (resistors), etc. are used.

When replacing any of components, be sure to use only manufacture's specified parts shown in the parts list.

Safety Component

- Components identified by mark have special characteristics important for safety.

1-2-6. Safety check after repairment

Confirm that the screws, parts and wiring which were removed in order to service are put in the original positions, or whether there are the positions which are deteriorated around the serviced places serviced or not. Check the insulation between the antenna terminal or external metal and the AC cord plug blades. And be sure the safety of that.

General Servicing Precautions

1. Always unplug the receiver AC power cord from the AC power source before:
 - a. Removing or reinstalling any component, circuit board module or any other receiver assembly.

- b. Disconnecting or reconnecting any receiver electrical plug or other electrical connection.
- c. Connecting a test substitute in parallel with an electrolytic capacitor in the receiver.

CAUTION: A wrong part substitution or incorrect polarity installation of electrolytic capacitors may result in an explosion hazard.

2. Test high voltage only by measuring it with an appropriate high voltage meter or other voltage measuring device (DVM, FETVOM, etc) equipped with a suitable high voltage probe.

Do not test high voltage by "drawing an arc".

3. Do not spray chemicals on or near this receiver or any of its assemblies.

4. Unless specified otherwise in this service manual, clean electrical contacts only by applying the following mixture to the contacts with a pipe cleaner, cotton-tipped stick or comparable non-abrasive applicator; 10% (by volume) Acetone and 90% (by volume) isopropyl alcohol (90%-99% strength).

CAUTION: This is a flammable mixture.

Unless specified otherwise in this service manual, lubrication of contacts is not required.

Capacitors may result in an explosion hazard.

5. Do not defeat any plug/socket B+ voltage interlocks with which receivers covered by this service manual might be equipped.

6. Do not apply AC power to this instrument and/or any of its electrical assemblies unless all solid-state device heat sinks are correctly installed.

7. Always connect the test receiver ground lead to the receiver chassis ground before connecting the test receiver positive lead.

Always remove the test receiver ground lead last. Capacitors may result in an explosion hazard.

8. Use with this receiver only the test fixtures specified in this service manual.

CAUTION: Do not connect the test fixture ground strap to any heat sink in this receiver.

9. Remove the antenna terminal on TV and turn on the TV.

10. Insulation resistance between the cord plug terminals and the external exposure metal should be more than Mohm by using the 500V insulation resistance meter.

11. If the insulation resistance is less than M ohm, the inspection repair should be required. If you have not the 500V insulation resistance meter, use a Tester. External exposure metal: Antenna terminal Headphone jack.

12. Use only a grounded-tip soldering iron to solder or unsolder ES devices.

13. Use only an anti-static type solder removal device. Some solder removal devices not classified as "anti-static" can generate electrical charges sufficient to damage ES devices.

14. Do not use freon-propelled chemicals. These can generate electrical charges sufficient to damage ES devices.

15. Do not remove a replacement ES device from its protective package until immediately before you are ready to install it.

(Most replacement ES devices are packaged with leads electrically shorted together by conductive foam, aluminum foil or comparable conductive material).

16. Immediately before removing the protective material from the leads of a replacement ES device, touch the protective material to the chassis or circuit assembly into which the device will be installed.

CAUTION: Be sure no power is applied to the chassis or circuit, and observe all other safety precautions.

17. Minimize bodily motions when handling unpackaged replacement ES devices. (Otherwise harmless motion such as the brushing together of your clothes fabric or the lifting of your foot from a carpeted floor can generate static electricity sufficient to damage an ES device.)

1-2-7. Ordering Spare Parts

Please include the following informations when you order parts. (Particularly the Version letter)

1. Model number, serial number and software version

The model number and serial number can be found on the back cover of each product. Software version can be found in the *Spare Parts List*.

2. Spare part No. and description

Spare part No. and description can be found in the *Spare Parts List*.

1-2-8. Photo used in this manual

The illustration and photos used in this Service Manual may not base on the final design of products, which may differ from your products in some way.

1-3. How to Read this Service Manual

1-3-1. Using icons:

Icons are used to attract the attention of the reader to specific information. The meaning of each icon is described in the table below:

Note:



A “note” provides information that is not indispensable, but may nevertheless be valuable to the reader, such as tips and tricks.

Caution:



A “caution” is used when there is danger that the reader, through incorrect manipulation, may damage equipment, lose data, get an unexpected result or has to restart (part of) a procedure.

Warning:



A “warning” is used when there is danger of personal injury.

Reference:



A “reference” guides the reader to other places in this binder or in this manual, where he/she will find additional information on a specific topic.

Chapter 2. Specification

2-1. Specification list

MODELO	HBTV-32D03HD	HBTV-42D03FD
Tamanho de tela	32 polegadas	42 polegadas
Taxa de Aspecto	16:9	16:9
Resolução	1366 x 768	1920 x 1080
Tempo de Resposta (ms)	6.5	6.5
Ângulo de Visão (H/V)	178°	178°
Contraste	3000:1	5000:1
Brilho	400 cd/m ²	500 cd/m ²
Idioma OSD	Inglês Português Espanhol	Inglês Português Espanhol
Sistema de Cor	PAL NTSC ISDB-T	PAL NTSC ISDB-T
Sistema de Áudio	M / N	M / N
Potência de saída de áudio (W)	8W*2	8W*2
Consumo total (W)	130W	180W
Tensão da rede (V)	100-240V	100-240V
Frequencia da rede (Hz)	50-60 Hz	50-60 Hz
Peso líquido (c/ pedestal) (Kg)	10	17,5
Peso Bruto (c/ pedestal) (Kg)	13	24,6

2-2. External pictures (four faces)

2-2-1. HBTV-32D03HD



Front Side



Left Side



Right Side



Back Side

2-2-2. HBTV-42D03FD



Front Side



Left Side



Right Side



Back Side

Chapter 3. Disassemble and Assemble

3-1. HBTV-32D03HD

3-1-1. Remove the Stand



- ① Lay down the unit so that rear cover faces upward.
- ② Remove the four screws from the rear cover indicated with .
- ③ Then remove the stand.

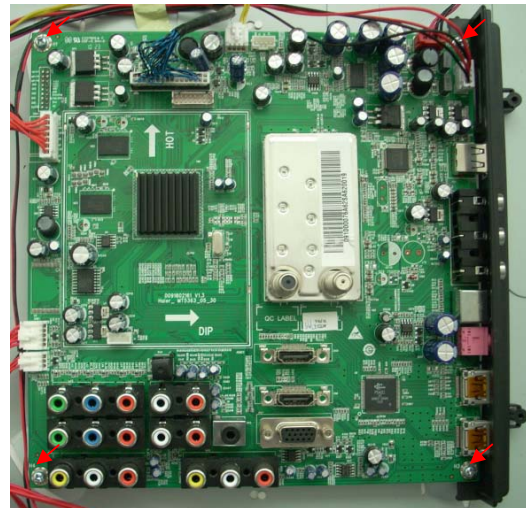
3-1-2. Remove the Back Cover



- ① Remove the fourteen screws indicated on figure above by .

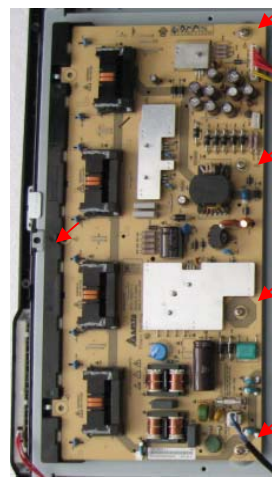
- ② Then remove the back cover from the unit.

3-1-3. Remove the mainboard



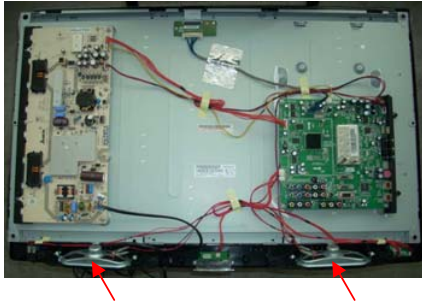
- ① Remove the four screws indicated on the figure above by .
- ② Remove the Main board.

3-1-4. Remove the power supply




- ① Remove the five screws indicated on the figure above by .
- ② Then remove the power supply.

3-1-5. Remove the Speaker



Take out the speaker directly.



- ① Remove the six screws indicated on the figure above by 
- ② Then remove the panel.


3-1-6. Remove the remote control



Remove the screw,
take out the remote control board.

3-1-7. Remove the Ornamental Assembly




- ① Remove the two screws indicated on the figure above by 
- ② Then remove the Ornamental Light Assembly

3-1-8. Remove the Panel

3-2. HBTV-42D03FD


3-2-1. Remove the Stand



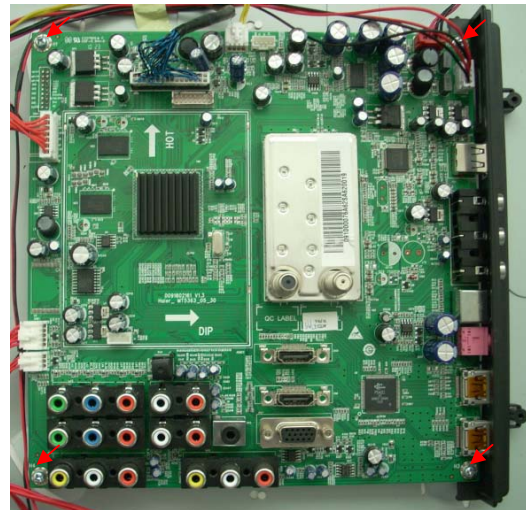
- ① Lay down the unit so that rear cover faces upward
- ② Remove the four screws from the rear cover indicated with 
- ③ Then remove the stand.


3-2-2. Remove the Back Cover



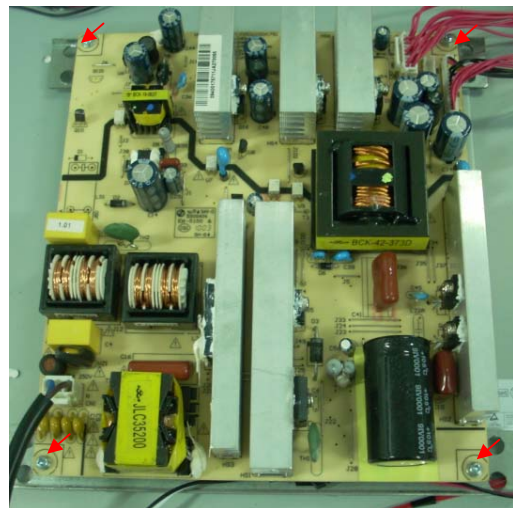
- ① Remove the twenty screws indicated on figure above by 
- ② Then remove the back cover from the unit.


3-2-3. Remove the mainboard and bracket of Side AV



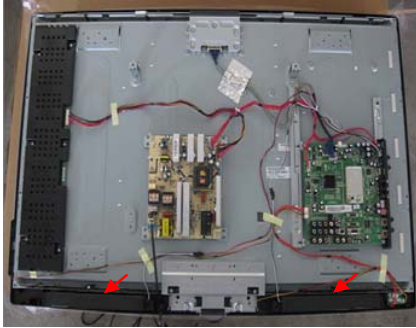
- ① Remove the four screws indicated on the figure above by 
- ② Remove the Main board.


3-2-4. Remove the power supply



- ① Remove the four screws indicated on the figure above by 
- ② Then remove the power supply.

3-2-5. Remove the Speaker



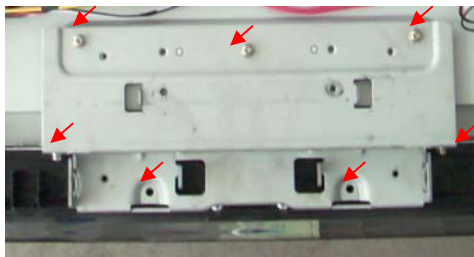
Take out the speaker indicated on the figure above by  directly.


3-2-6. Remove the remote control



Remove the screw,
take out the remote control board.


3-2-7. Remove the Metal connecting board



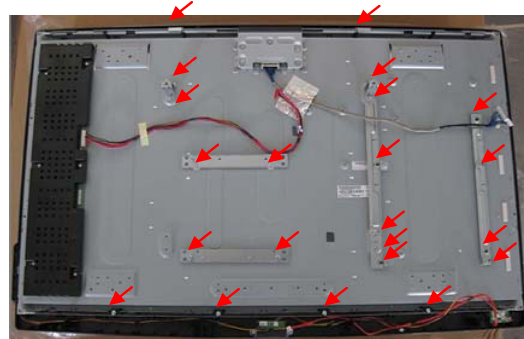
- ① Remove the seven screws indicated on the figure above by 
- ② Remove the Metal connecting board.


3-2-8. Remove the Ornamental Light Assembly



- ① Remove the two screws indicated on the figure above by 
- ② Then remove the Ornamental Light Assembly

3-2-9. Remove the panel bracket

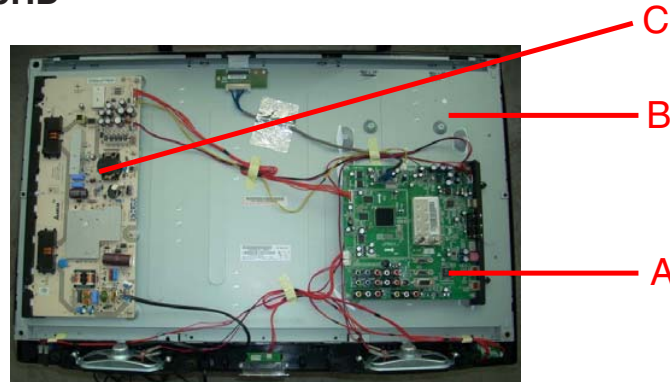


- ① Remove the twenty-two screws indicated on the figure above by 
- ② Remove the Panel Bracket and Metal Slice.
- ③ Then you can take off the Panel.

Chapter 4. Location of Controls and Components

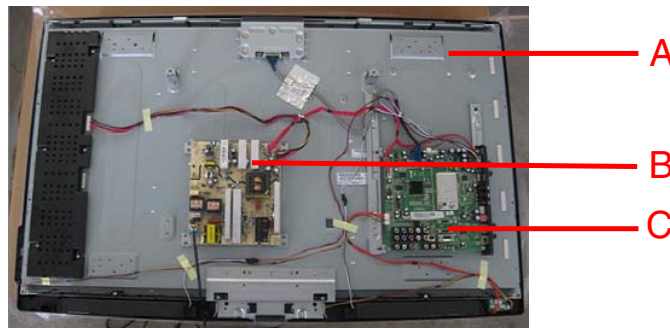
4-1. Board Location

4-1-1. HBTV-32D03HD



No.	Parts number	Description
A Board	410852	Placa Principal
B Board	410283	Tela de LCD
C Board	410853	Placa da Fonte

4-1-2. HBTV-42D03FD



No.	Parts number	Description
A Board	410772	Tela de LCD
B Board	497234	Placa da Fonte
C Board	497241	Placa Principal

OBS.: OS ITENS ACIMA SOMENTE PODEM SER SOLICITADOS MEDIANTE CONSULTA AO SUPORTE TÉCNICO !!!

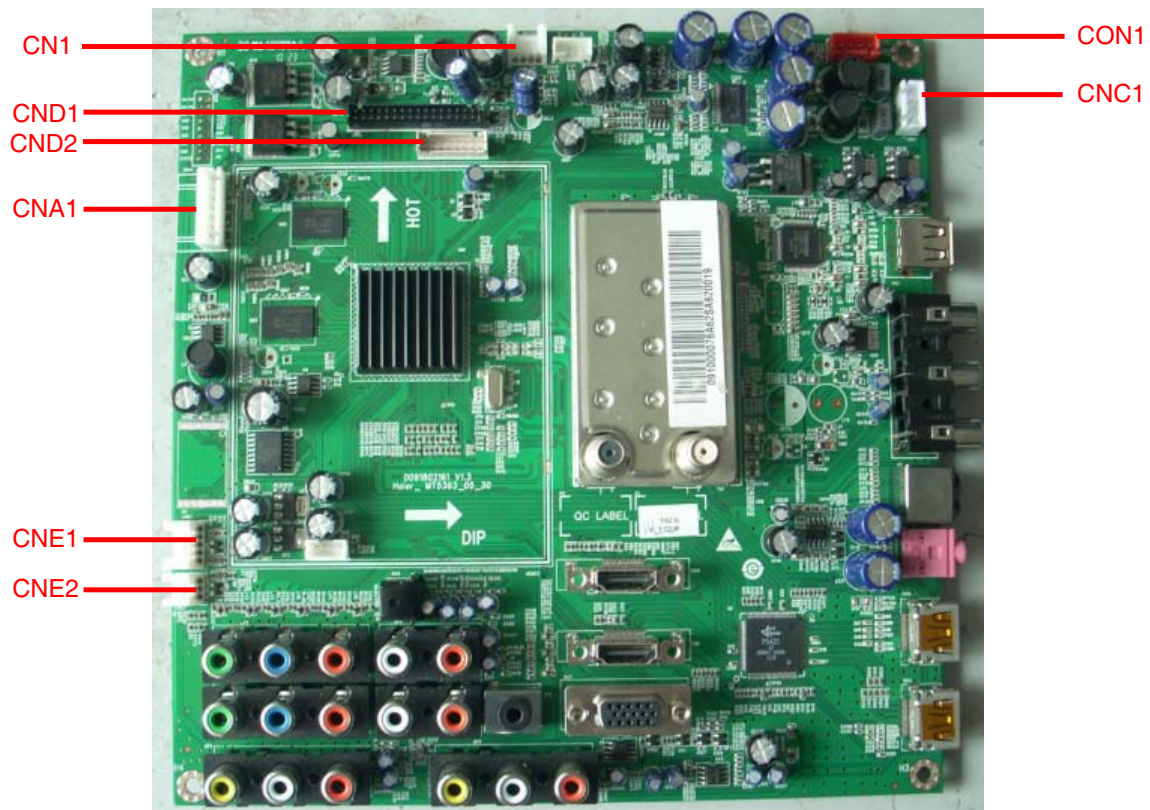
4-2.Mainboard

4-2-1. Function Description:

Process signal which incept from exterior equipment then translate into signal that panel can display.

4-2-2.Connector definition

4-2-2-1.Mainboard of HBTV-32D03HD/ HBTV-42D03FD:



4-2-2-2.Connector definition

Power connectors (CNA1)

Pin number	Signal name	Description
1	PW-ON/OFF	ON/OFF
2	GND	GND
3	5VS	5V-Stand
4	GND	GND
5	GND	GND
6	12VA	12V-Mainboard
7	12VA	12V-Mainboard

Back light connectors (CN1)

Pin number	Signal name	Description
1	ADJ	Back light adjust
2	PBON	Back light ON/OFF
3	GND	GND
4	5VS	5VS

Power of audio amplifier connector (CON1)

Pin number	Signal name	Description
1	24V	24V
2	24V	24V
3	GND	GND
4	GND	GND

Speaker connector (CNC1)

Pin number	Signal name	Description
1	L+	Left of audio
2	L-	Left of audio
3	L+	Right of audio
4	R+	Right of audio

Key connector (CNE2)

Pin number	Signal name	Description
1	GND	GND
2	KEY1	KEY1
3	KEY0	KEY0

Remote connector (CNE1)

Pin number	Signal name	Description
1	5V	5V
2	IRIN	IR IN
3	LEDR	LED-RED
4	LEDB	LED-BLUE
5	GND	GND

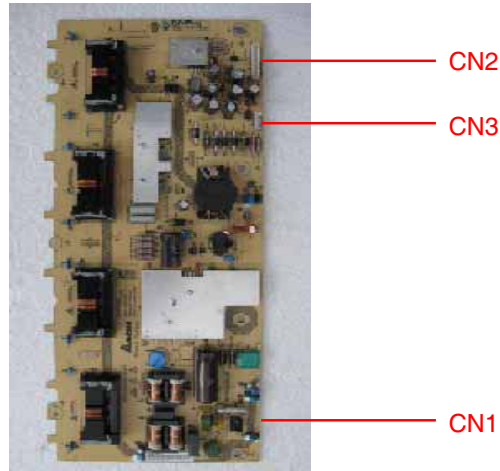
4-3. Power Supply Board

4-3-1. Function description:

To supply power for Mainboard, Panel.

4-3-2. Connector definition:

4-3-2-1. HBTV-32D03HD



CN2

PIN NUMBER	DESIGNATION
1	12V
2	12V
3	GND
4	GND
5	5VSTB
6	GND
7	STN
8	SEL
9	V-IPWM
10	BL-ON
11	V-EPWM

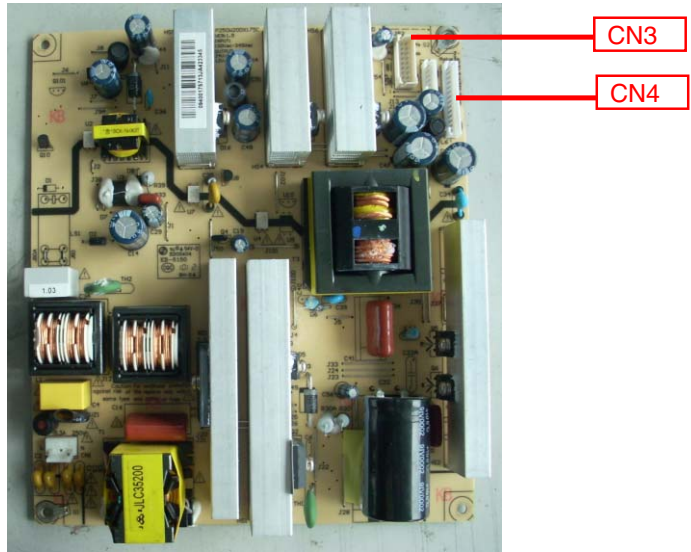
CN1

Pin number	Signal name
1	L
2	N

CN3

Pin number	Signal name
1	24V
2	24V
3	GND
4	GND

4-3-2-2. HBTV-42D03FD



CN3

Pin number	Signal name	Pin number	Signal name
1	24V	8	GND
2	24V	9	GND
3	24V	10	GND
4	24V	11	DC-DIMMING
5	24V	12	BL-ON/OFF
6	GND	13	PWM-DIMMING
7	GND	14	STATUS

CN4

Pin number	Signal name	Pin number	Signal name
1	12V	10	GND
2	P-ON/OFF	11	DC-DIMMING
3	12V	12	GND
4	24V	13	PWM-DIMMING
5	12V	14	GND
6	24V	15	BL-ON/OFF
7	GND	16	GND
8	GND	17	STATUS
9	GND	18	5V

4-4.LCD Panel

4-4-1. Function Description: Display the signal.

4-4-2. Connector definition

4-4-2-1. HBTV-32D03HD

AU (T315XW03 V5)



BACKLIGHT CONNECTOR PIN CONFIGURATION :

	Description		Min	Typ	Max	Unit	Condition/Note
1	Operating Voltage	Vo	639	710	781	Vrms	1. Dimming range is set 100% 2. Base on lamp specification, for each lamp need to be applied at least minimum operating voltage to ensure each lamp can be normally worked!
2	Operating Current	Io	12	12.5	13	mArms	1. Dimming range is set 100% 2. Base on lamp specification, for each lamp need to be applied at least minimum operating current to ensure each lamp can be normally worked!
3	BL Total Power Dissipation	PBL	76	78	80	Watt	1. Dimming range is set 100%. 2. In order to get typical light out, the backlight need to be applied typical power. 3. Input power of JIG BD is about <u>78 W (typ)</u> by AUO measure!
4	Striking Voltage	At 0°C	Vstrike	1500	1650	Vrms	1. Base on lamp specification, to ensure each lamp can be normally ignited, need to apply at least minimum striking voltage to each lamp
		At 25°C		1350	1500		
5	Striking Time	Ts	1000	-	1500	msec	1. To ensure each lamp can be normally ignited, each lamp need to be applied at least minimum striking voltage during minimum striking time.
6	Operating Frequency	fo				kHz	1. Operating frequency is set by customer. 2. Need to double confirm display quality. (*)
7	PWM Operating Frequency	F_PWM	120	180	240	Hz	1. PWM frequency is set by customer. 2. Need to double confirm display quality. (*)
8	PWM Dimming Duty Ratio	D_PWM	20	-	100	%	Note 1. Dimming range Note 2. Note 3. Duty ratio definition.
9	Lamp Type	U type					
10	Number of Lamps	4		pcs			

4-4-2-2. HBTV-42D03FD

AUO (T420HW06V2)

**INVERTER UNIT**

Symbol	Description
VDDB (Main Power)	DV input 24.0 VDC
VDDB (Main Power)	DV input 24.0 VDC
VDDB (Main Power)	DV input 24.0 VDC
VDDB (Main Power)	DV input 24.0 VDC
VDDB (Main Power)	DV input 24.0 VDC
GND	Ground
GND	Ground
GND	Ground
GND	Ground
GND	Ground
Reserved	Please leave it open
VBLON (Enable Pin)	BL On/Off control signal High/Open: On, Low: Off (Low=0~ 0.8V, High=2.0~5.0V)
VDIM	Internal PWM (3.3V,100% duty)/open for 100% luminance, 0V : 10% duty
NC	

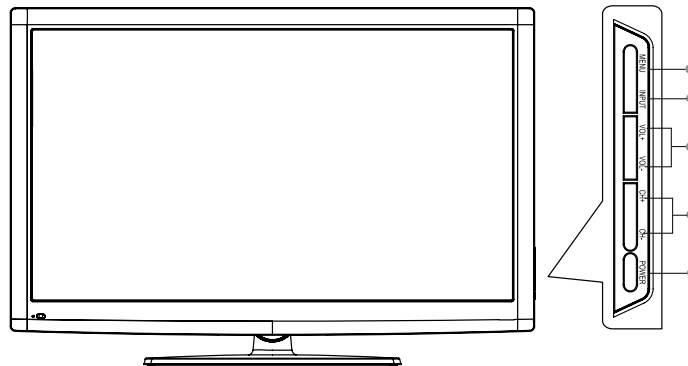
**NOTA: A PLACA DO INVERTER ACOMPANHA A TELA DE LCD,
PORTANTO NÃO É FORNECIDA EM SEPARADO.**

Chapter 5. Operation Instructions

5-1. Get to know your TV

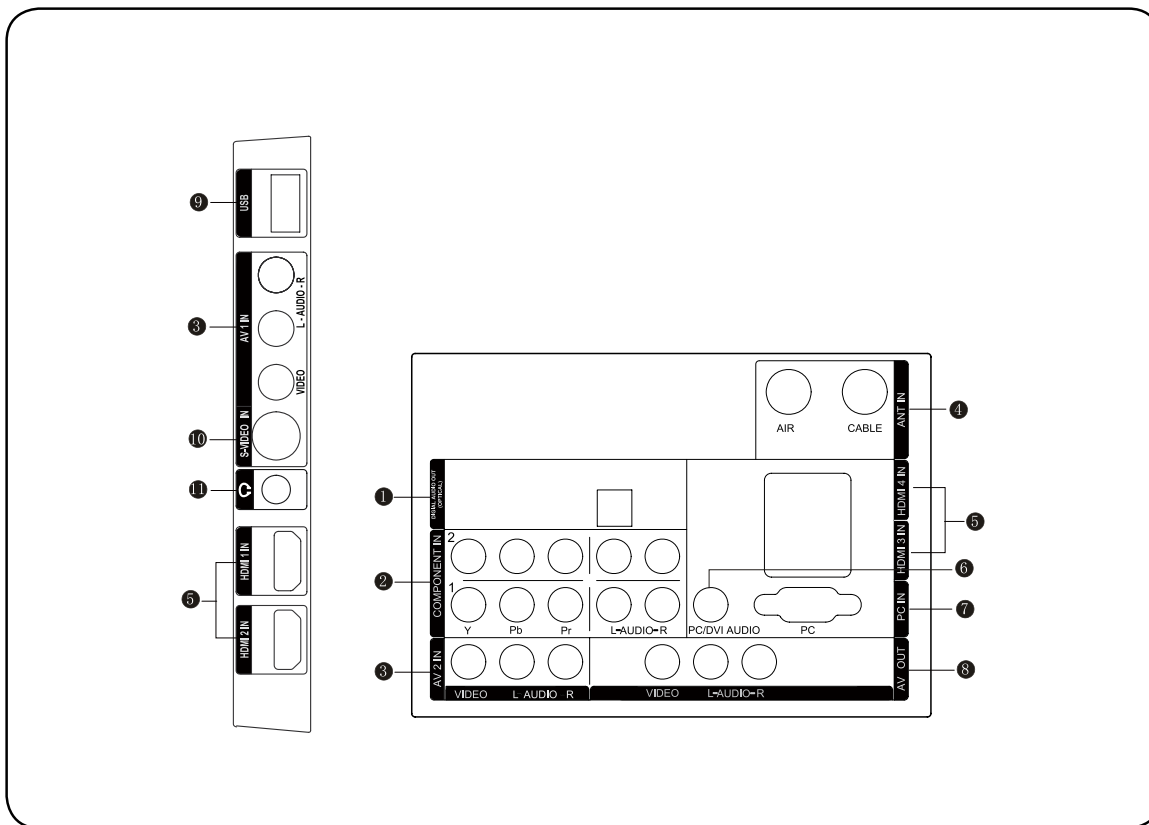
- This is a simplified representation of front panel.
- Here shown may be somewhat different from your TV.

TV Side panel controls and connections



①	MENU	Menu display. Press to access the on-screen menu display.
②	INPUT	Press this key to open/close signal source options menu.
③	VOL +/-	Press to adjust the volume. In the MENU screen, these buttons serve as right/left buttons.
④	CH +/-	Press to scan through channels. To scan quickly through channels, press and hold down either +/- . In the MENU screen, these buttons serve as up/down buttons.
⑤	POWER	Press to turn on and off the TV.

Back panel connections



①	DIGITAL AUDIO OUT(OPTICAL)	Connect a component Video/Audio device to these jacks.
②	Component IN	Connect a component Video/Audio device to these jacks.
③	AV IN	Connect Video/Audio out from an Video/Audio device to these jacks.
④	ANT IN	Connect cable or antenna signal to the TV, either directly or through your cable box .
⑤	HDMI IN	Connect a HDMI device to receive digital audio and uncompressed digital video.
⑥	PC/DVI Audio In	Connect the audio L/R cables from a computer to this jack.
⑦	PC IN	Connect the monitor output connector from a PC to the jack.

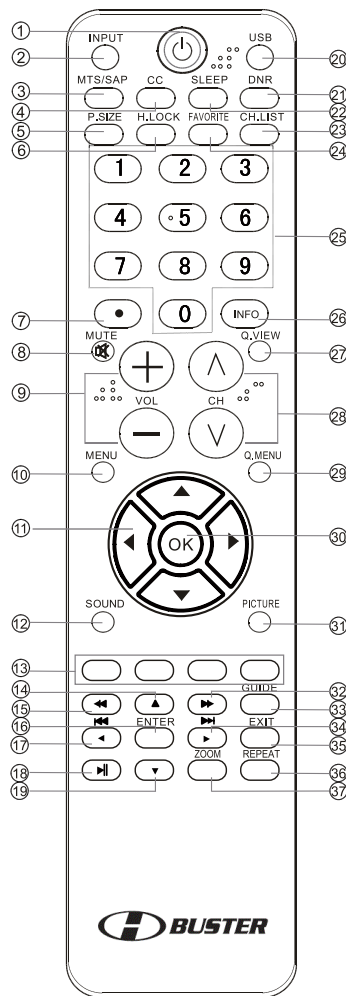
⑧	AV OUT	Video/Audio output terminal.
⑨	USB jack	Connect USB storage device to this jack.
⑩	S-Video In	Connect the S-Video cable from an external signal source to this jack.
⑪	Headphone jack	Headphone audio output terminal.

6-2. Get to know your remote control

Remote control

The remote control cannot be operated unless the batteries are properly loaded.

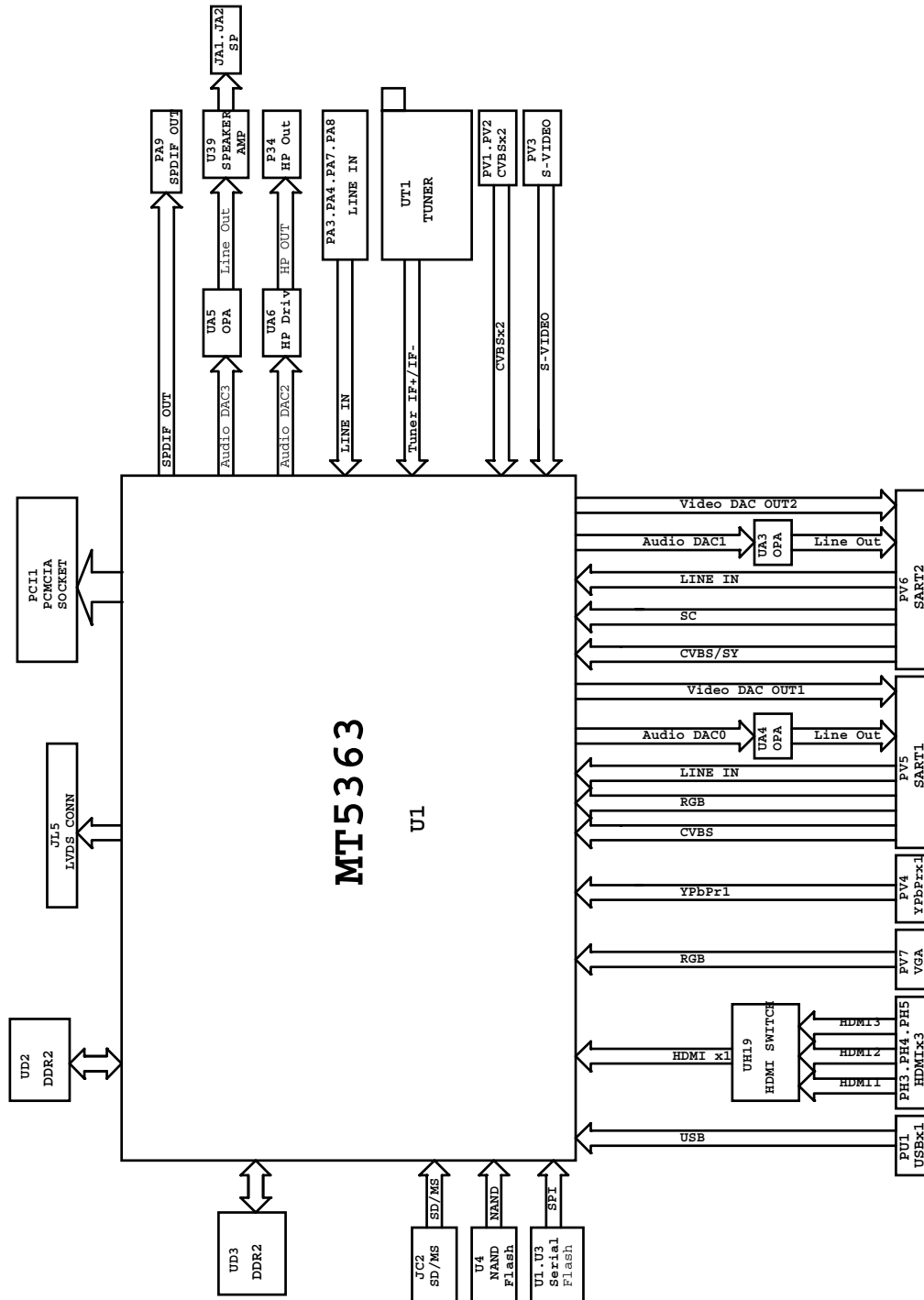
When using the remote control, aim it at the remote sensor on the TV.



①	Power	Press to turn on and off the TV
②	INPUT	Show the input source
③	MTS/SAP	Select MONO, STEREO, SAP
④	CCD (closed caption)	Select a closed caption option
⑤	P.SIZE	Select the aspect ratio
⑥	H.LOCK	Hotel Lock button
⑦	• button	Press to select digital channels. For example, to enter "54-3", press "54", "•" and "3"
⑧	MUTE	Switches the sound on or off
⑨	VOLUME UP/DOWN	Press to adjust the volume
⑩	MENU	Press to open the on-screen menu
⑪	Thumbstick (Up/Down/Left/Right)	Allows you to navigate the on-screen menus and adjust the system settings to your preference
⑫	SOUND	Press to cycle through different sound settings
⑬	Color button	Press to operate the Functions in GUIDE/Program Edit/Block Program/USB
⑭		
⑰	Thumbstick(USB)	Allows you to navigate the on-screen menus in USB function, and 17 for Previous, 34 for Next;
⑱		
⑳		
㉑	REV	Fast Reverse (Only for USB)
㉒	ENTER	Confirm button (Only for USB)
㉓	Play/Pause button	(Only for USB)
㉔	USB	Press to switch input source to USB in
㉕	DNR	Digital Noise Reduction
㉖	SLEEP button	Press to display the sleep timer option
㉗	CH.LIST	Open the channel list in TV
㉘	FAVORITE	Open the favourite channel list in TV
㉙	Number buttons	Press to change a channel
㉚	INFO	Show Informations about the programs and USB files
㉛	Q.VIEW	Press to jump back and forth between two channels
㉜	CHANNEL UP/DOWN	Channel selection(up/down)
㉝	Q.MENU	Adjust some functions in common use
㉞	OK	Accesses the highlighted item in the on-screen menu
㉟	PICTURE	Press repeatedly to cycle through the available picture modes
㊱	FWD	Fast forward(Only for USB)
㊲	GUIDE	Display the guide when you are watching digital channels
㊳	EXIT	Clears all on-screen displays and returns to TV viewing from any menu
㊴	REPEAT	Replay a music or movie
㊵	ZOOM	Press to magnify/minify an image

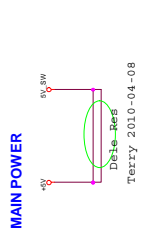
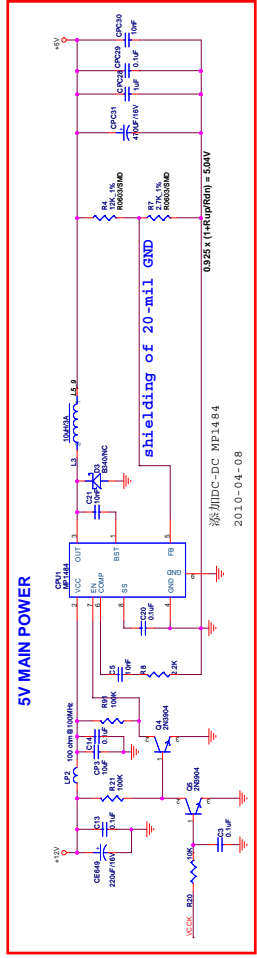
Chapter 7. Electrical Parts

7-1. Block Diagram

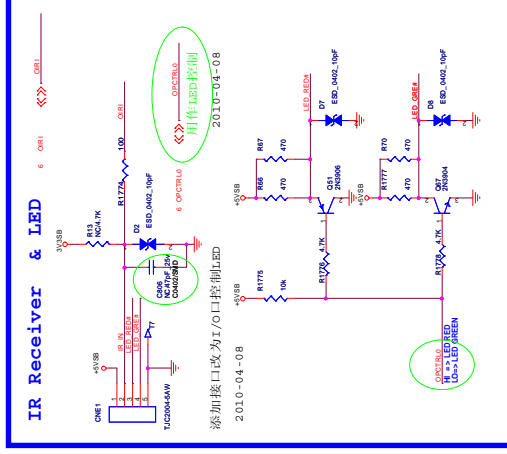
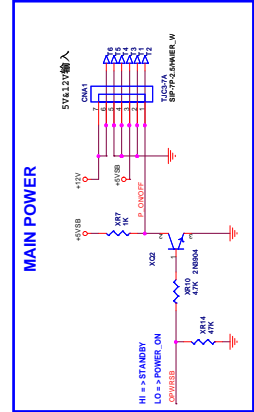
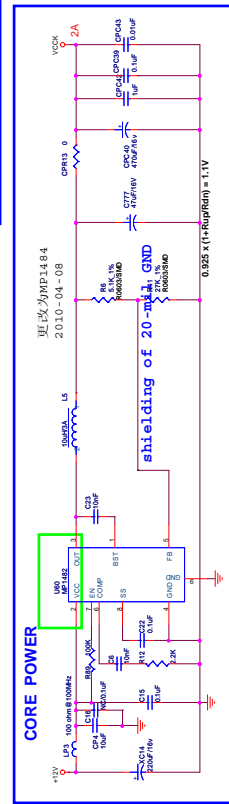
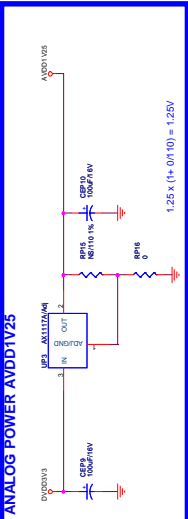
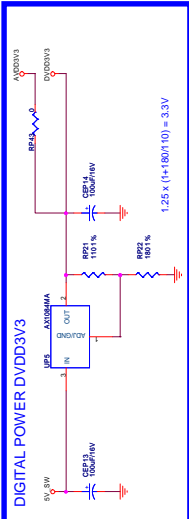
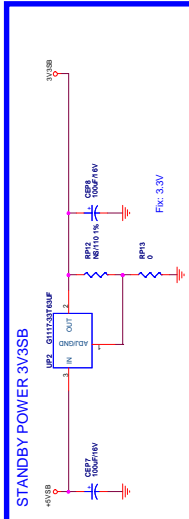


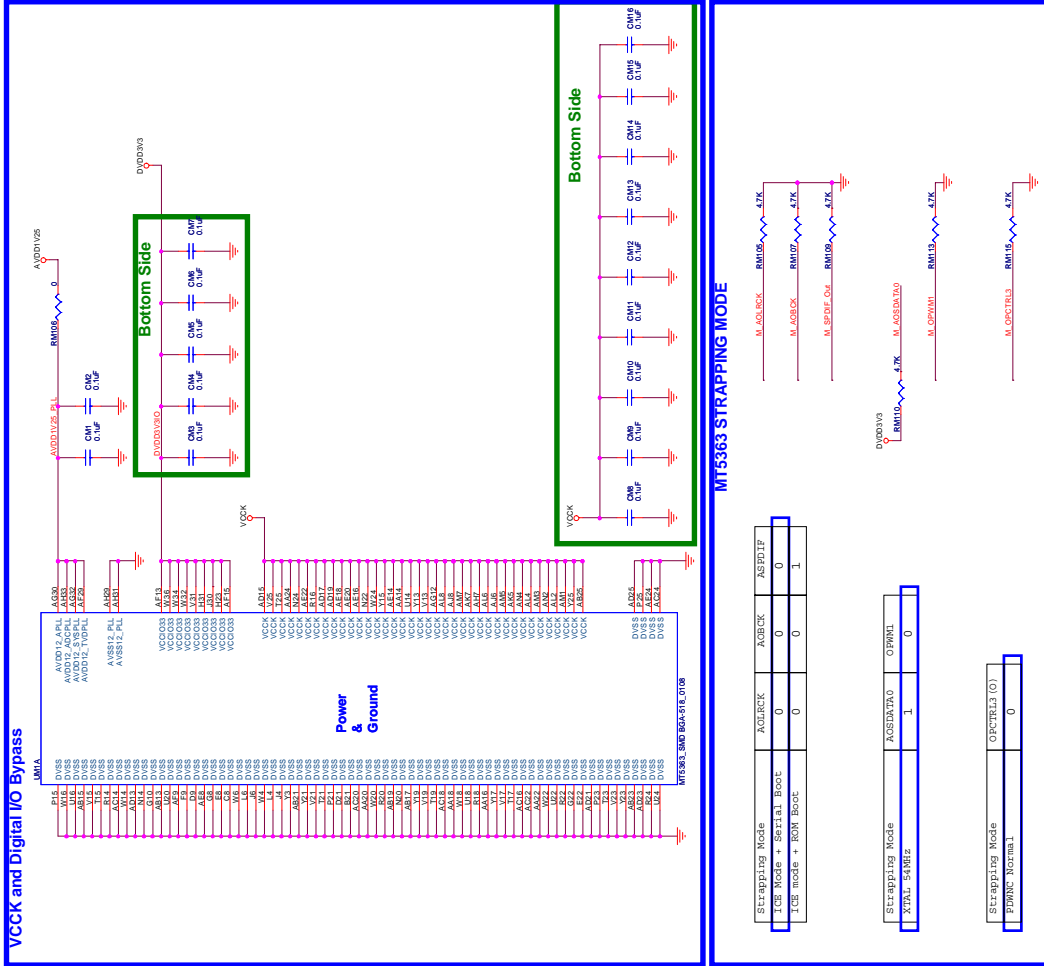
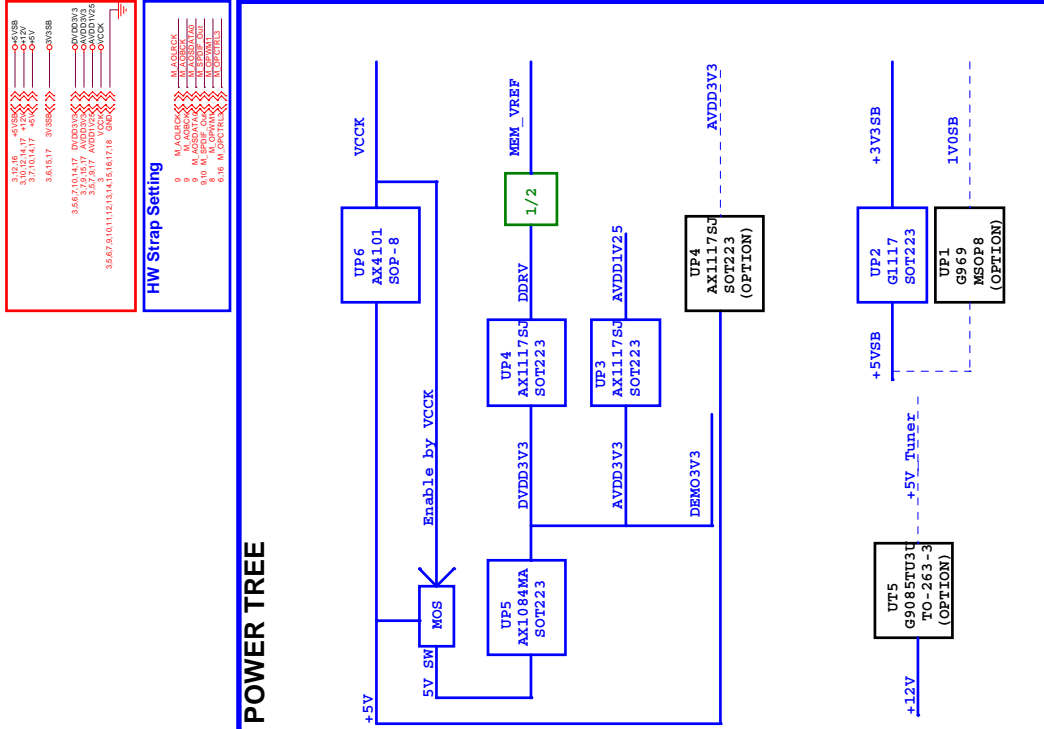
7-2. Circuit Diagram

7-2-1. Main Board



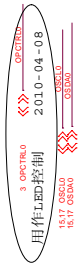
Note:
The power connected to RP4 should turn LPF8 off when +5V is turning on. Therefore, if +5VSB lead +5V, please insert RP3B. If +5V lead +5VSB, please insert RP41.







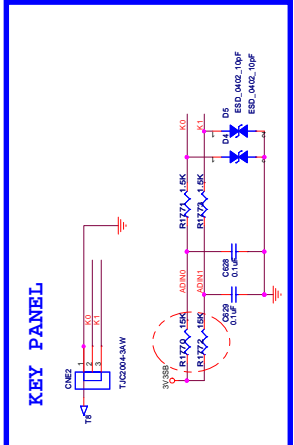
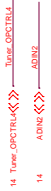
Audio Mute/Digital Amp Control
HP_DET <-> HP_DET#



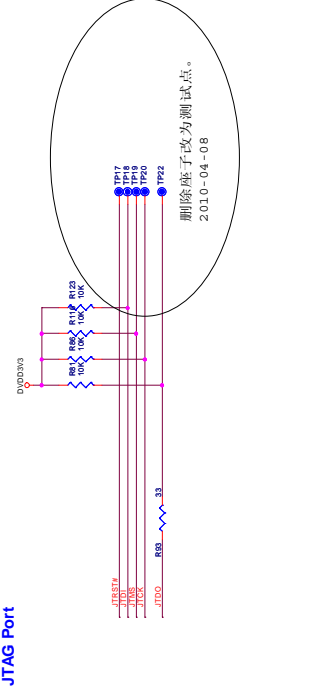
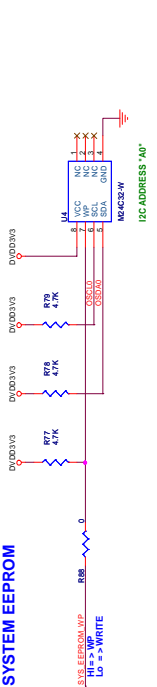
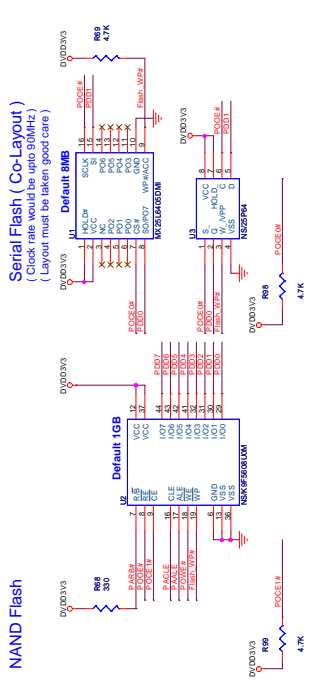
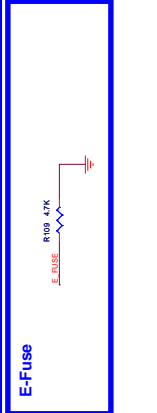
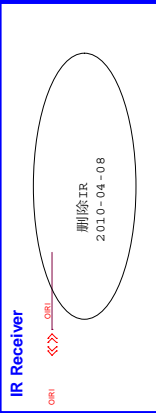
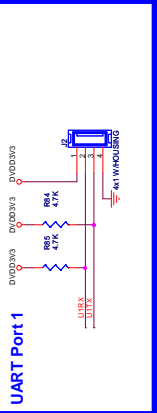
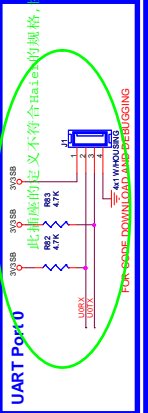
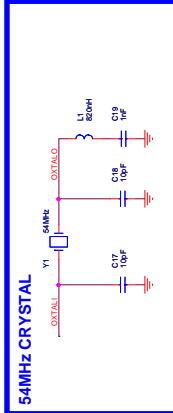
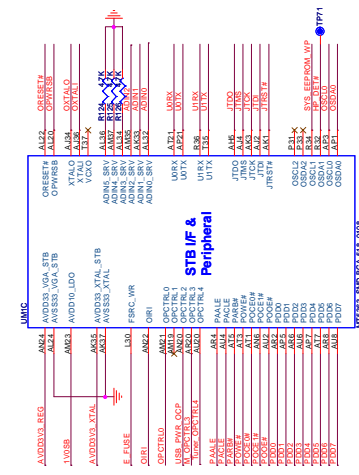
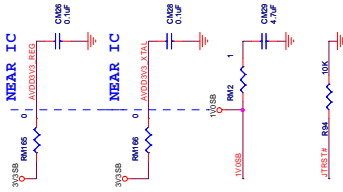
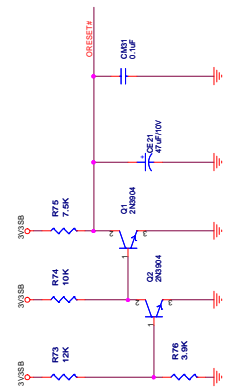
Other Control Interface
3 OPWRCK <-> OPWRCK#
7 USB_PWR_OPCN <-> USB_PWR_OPCN#
4, 6, 8 I2C/SMB

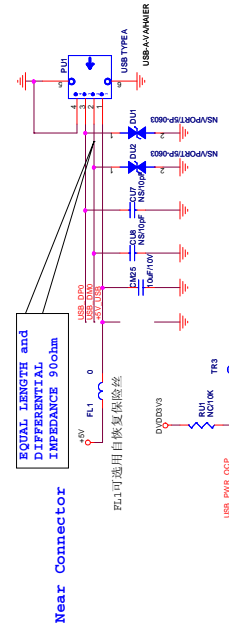
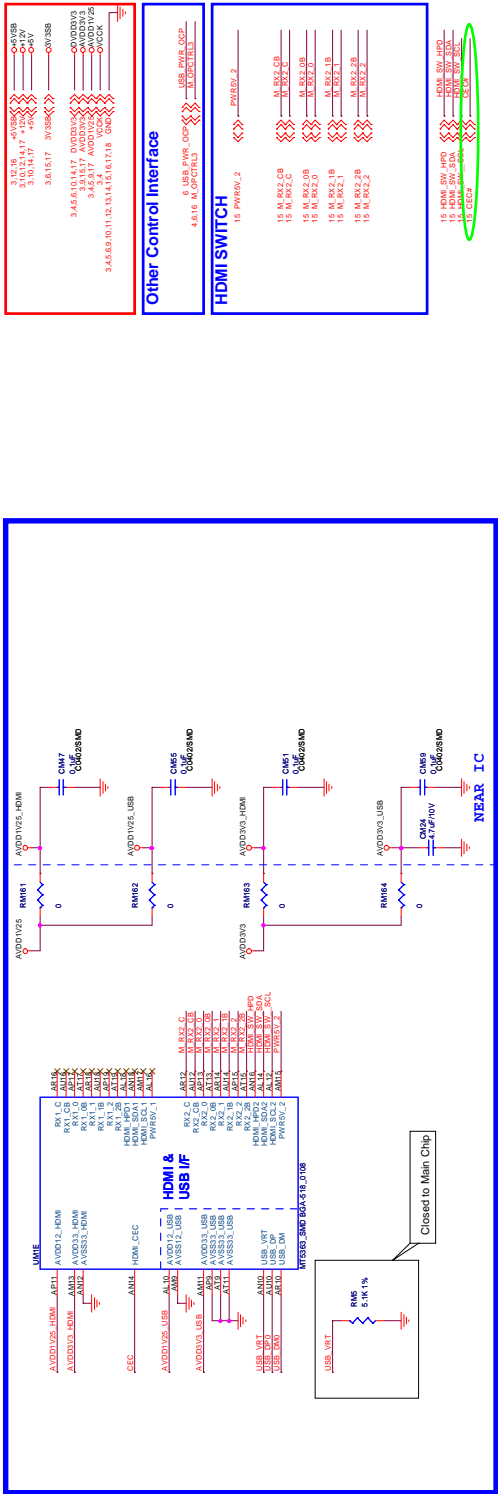
HDMI SW CTRL

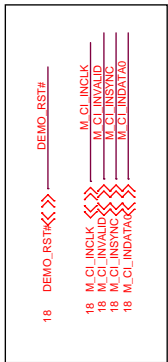
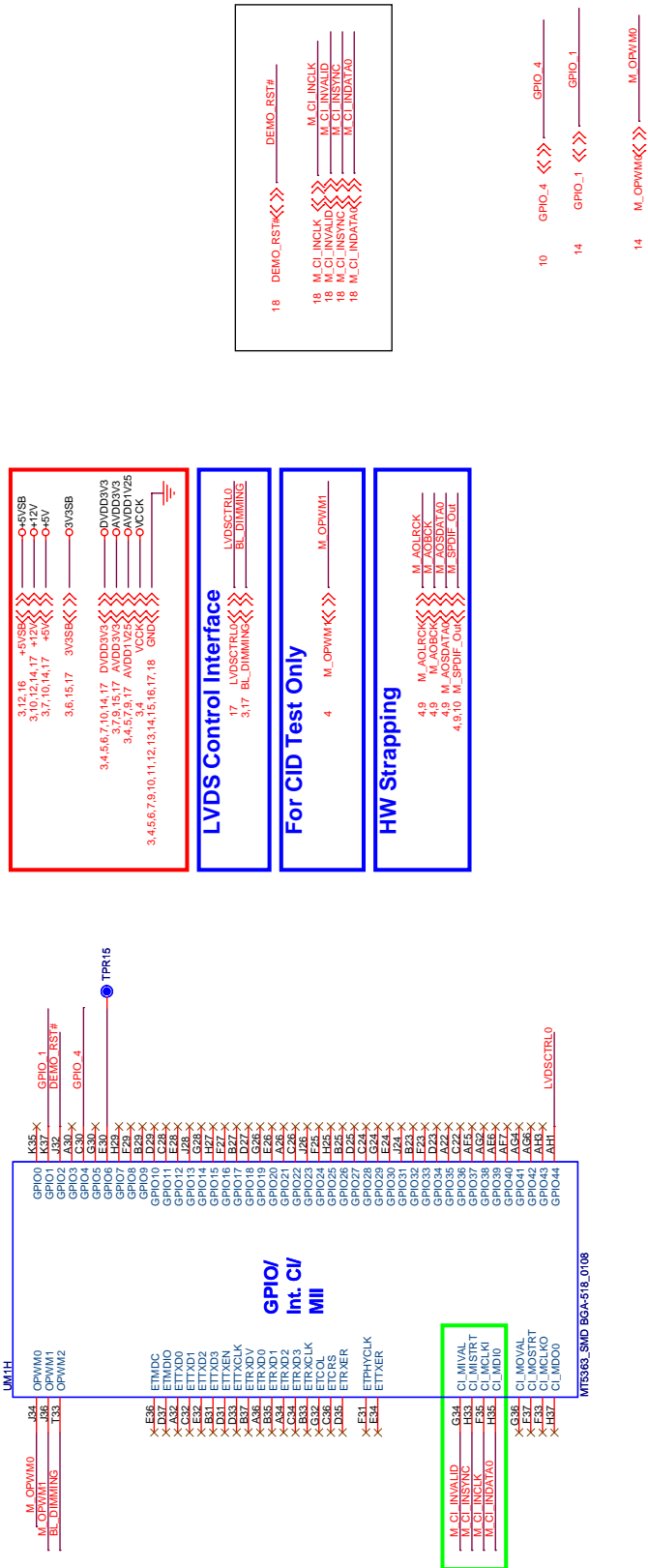
HW Strap Pins
4, 16 M_OPCTRLX <-> M_OPCTRLX_3
14 ADNR2 <-> ADNR2

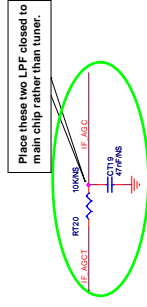
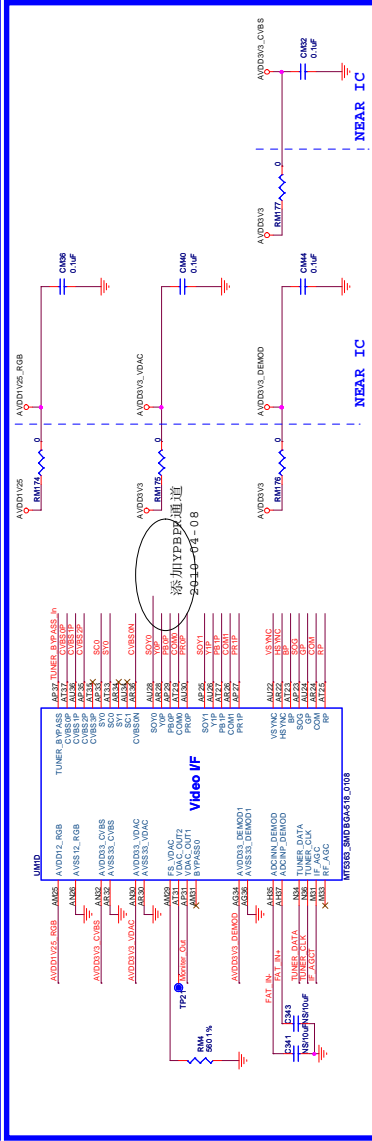
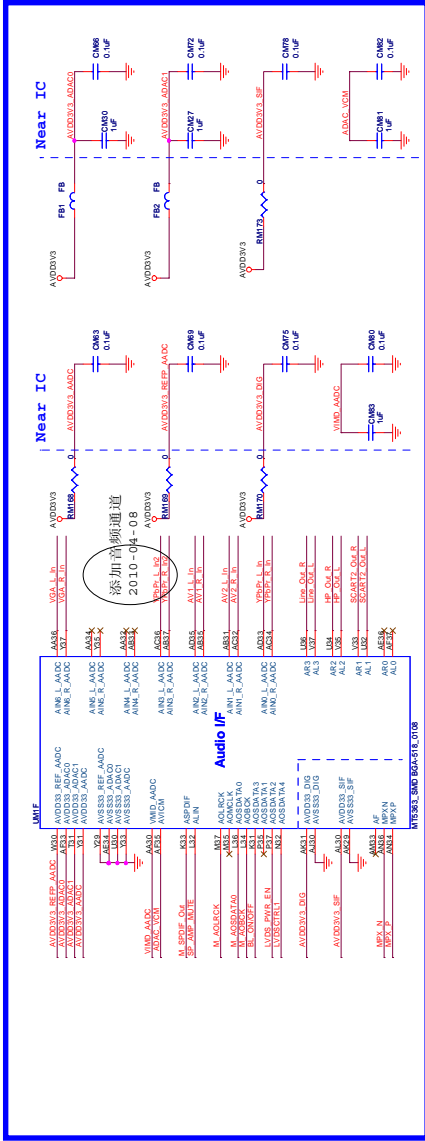
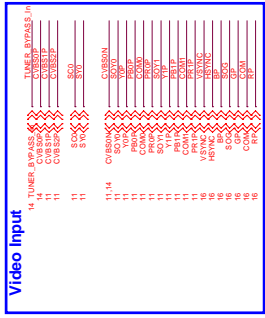
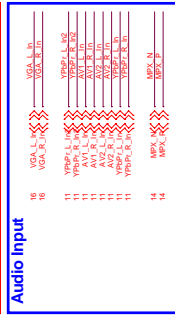


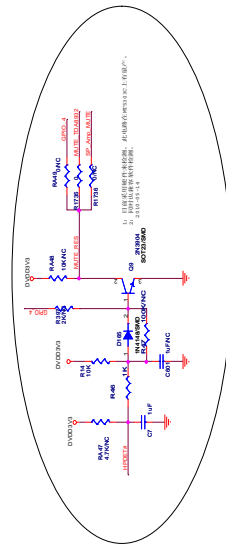
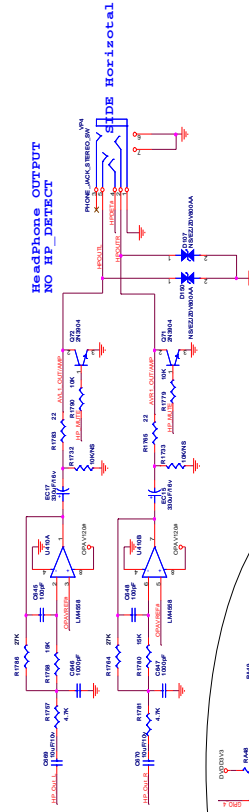
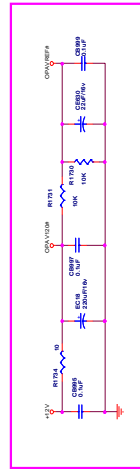
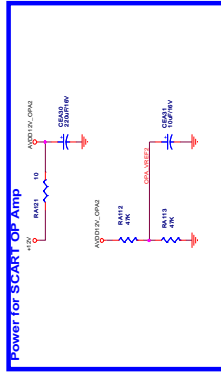
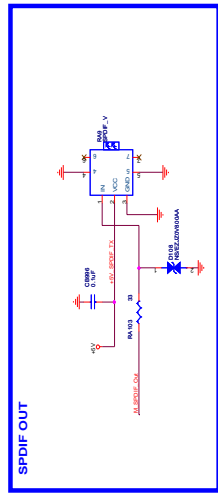
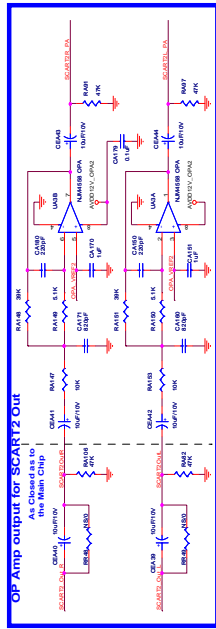
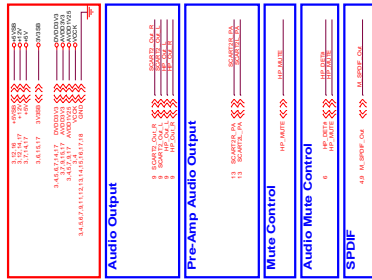
RESET Circuit



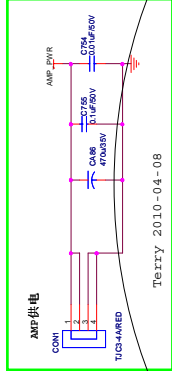
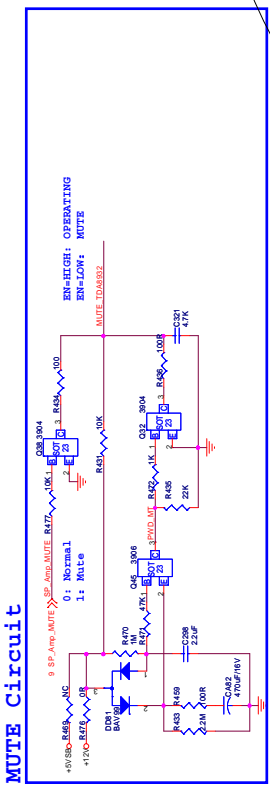
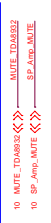
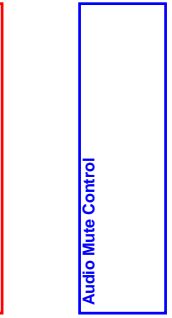




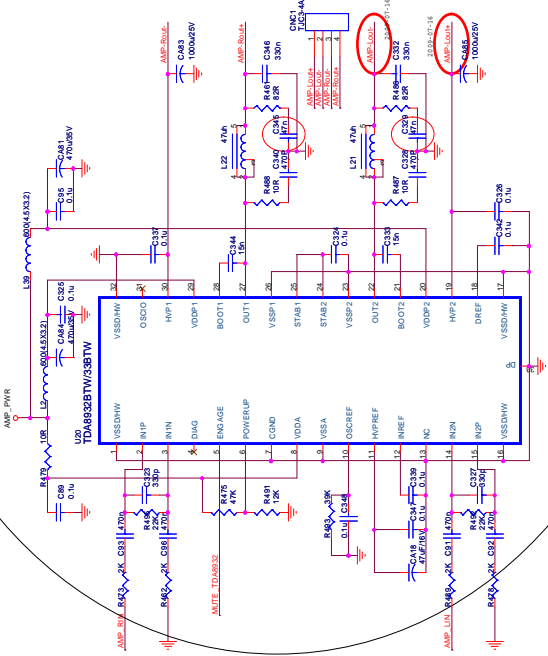




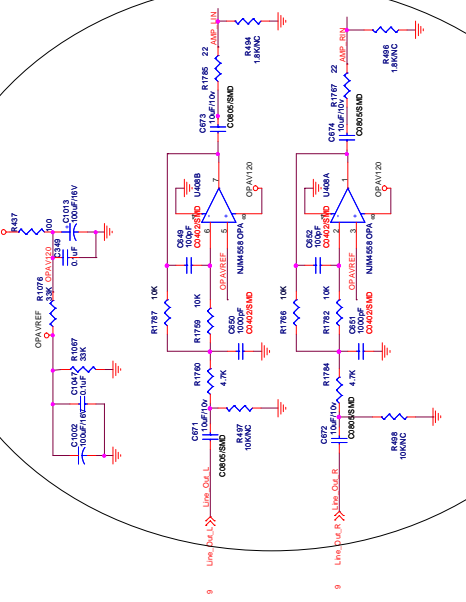
- 9 OPVDD1
- 12 MUTE_TO_OPA2
- 13 SP AMP_MUTE



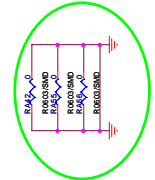
Terry, 2010-04-08

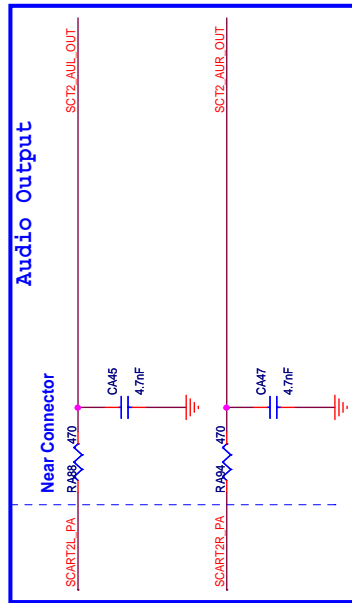
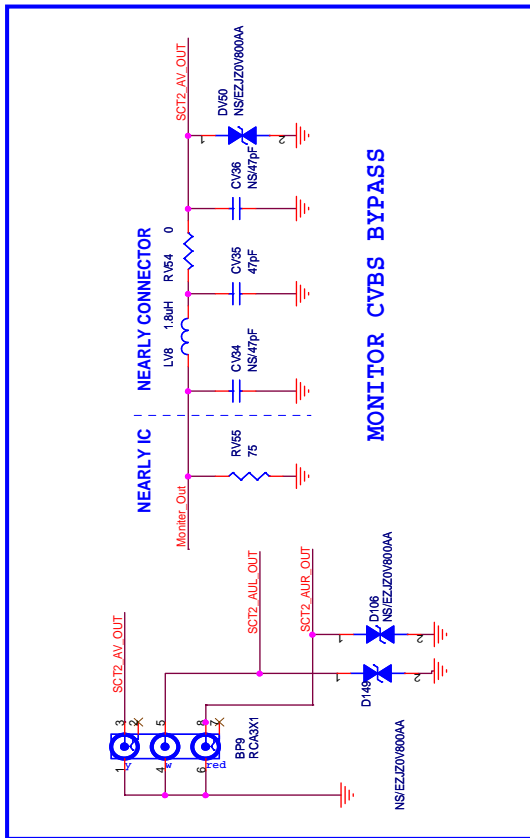
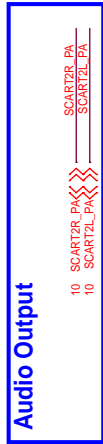
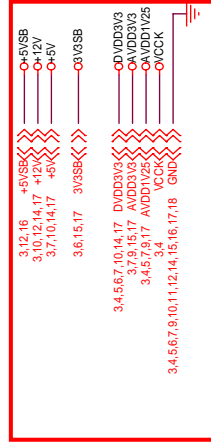


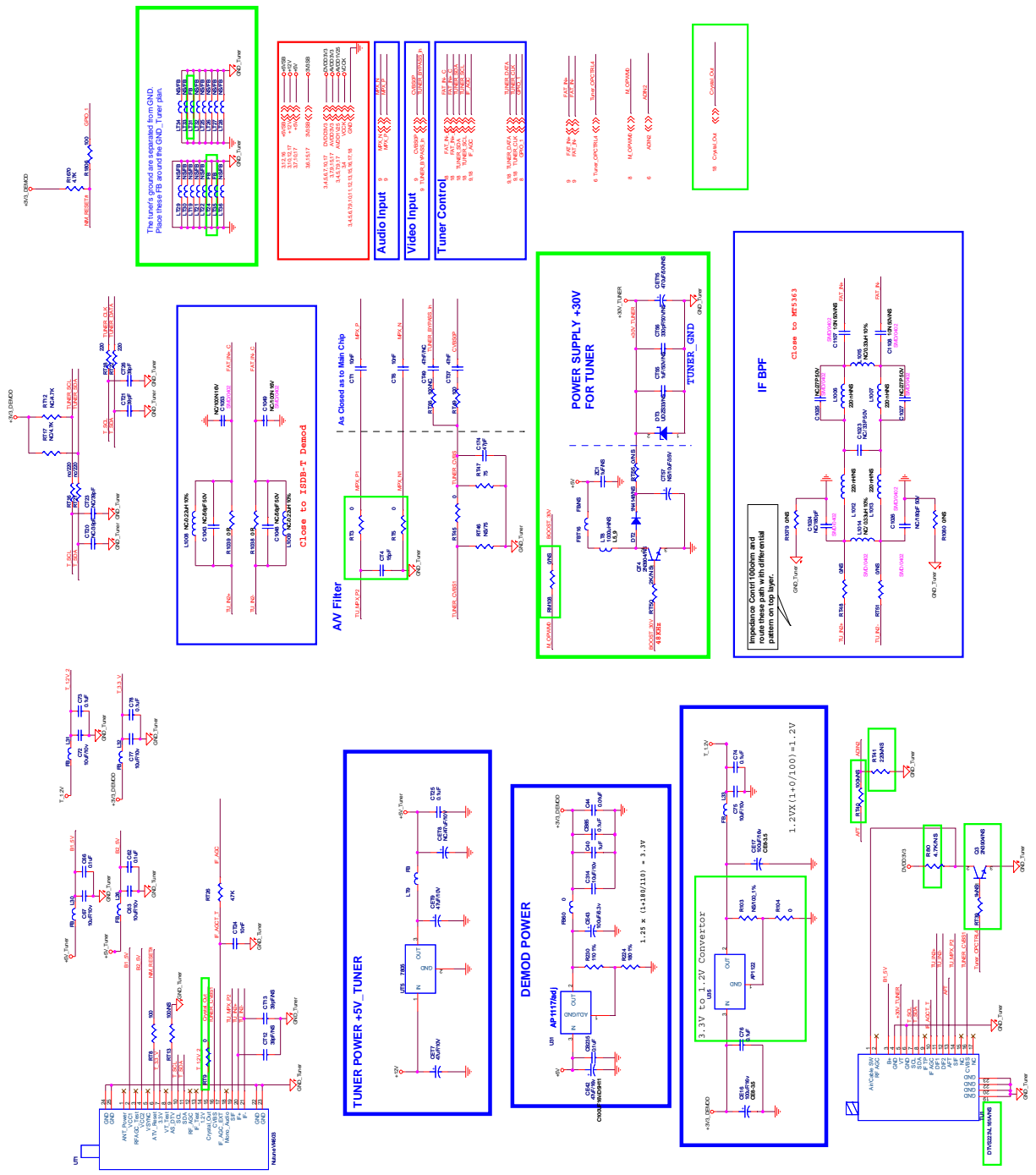
AUDIO OP



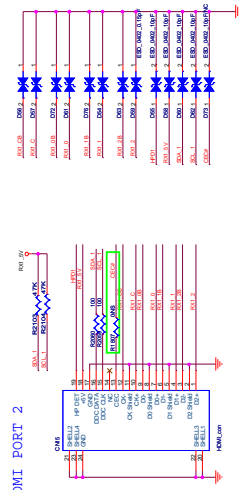
LAYOUT 屏显-个地



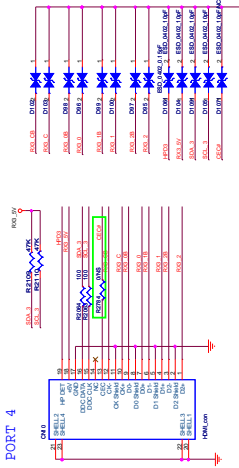




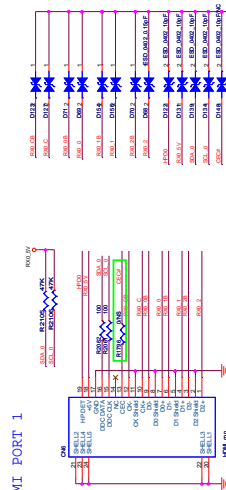
HDMI PORT 2



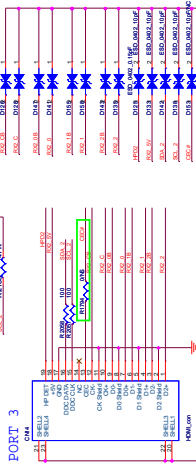
HDMI PORT 4



HDMI PORT 1



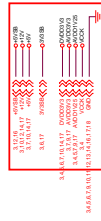
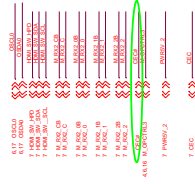
HDMI PORT 3



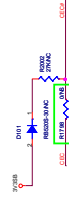
HORIZONTAL MOUNT

HORIZONTAL MOUNT

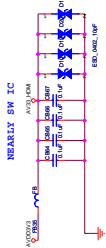
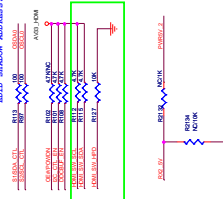
HDMI SWITCH



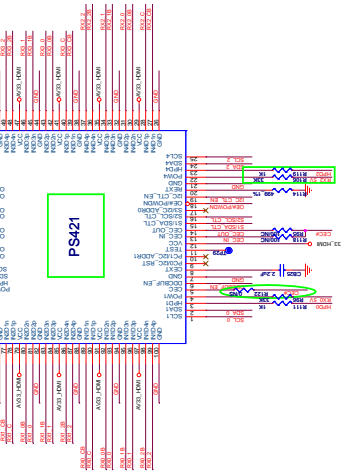
HORIZONTAL MOUNT

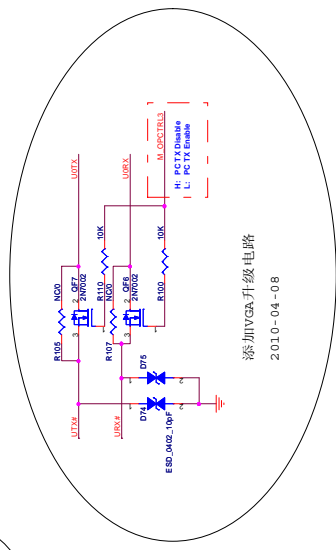
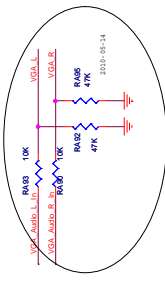
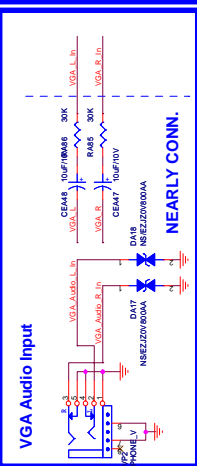
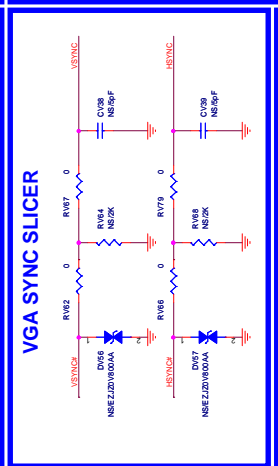
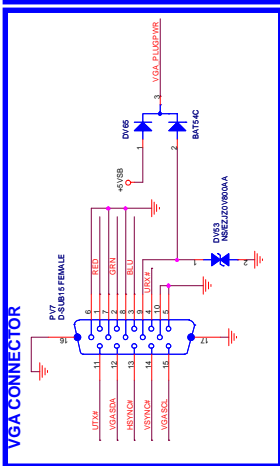
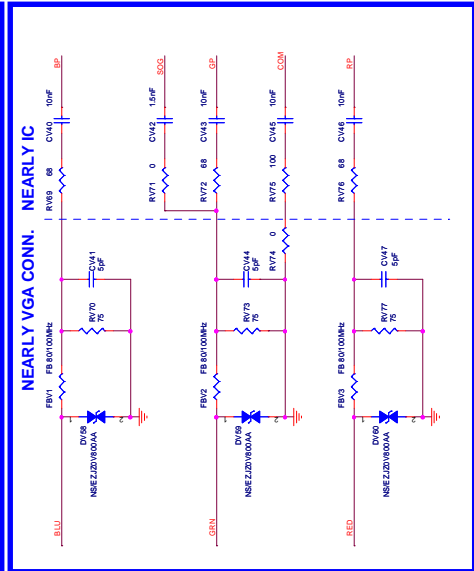
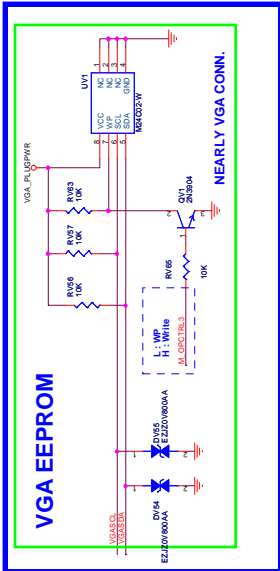
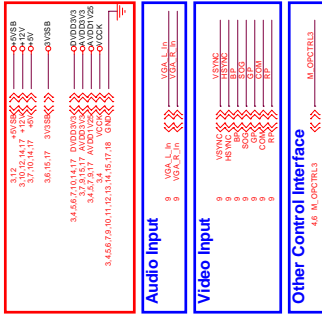


Pulled up to 3.3V on CPU side.
I2C COMMAND ADDRESS: 0x6C / 7D
I2C COMMAND DATA: 0x00 / 0x00

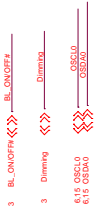
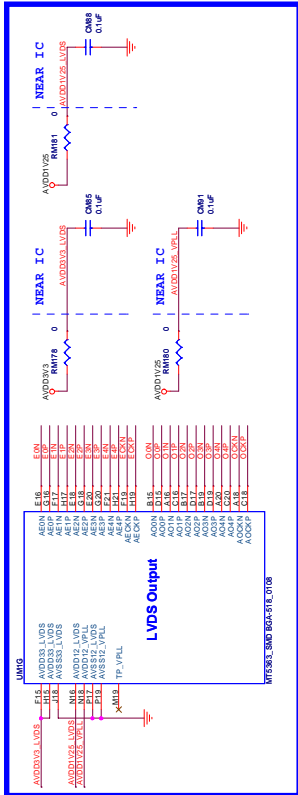
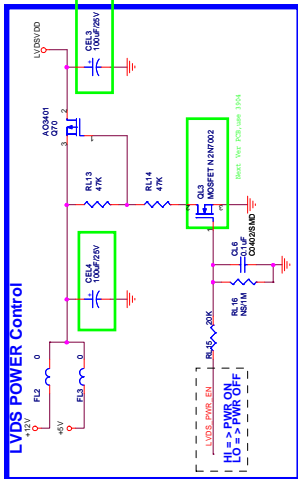
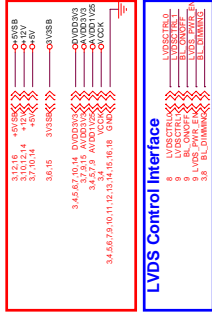


HORIZONTAL MOUNT

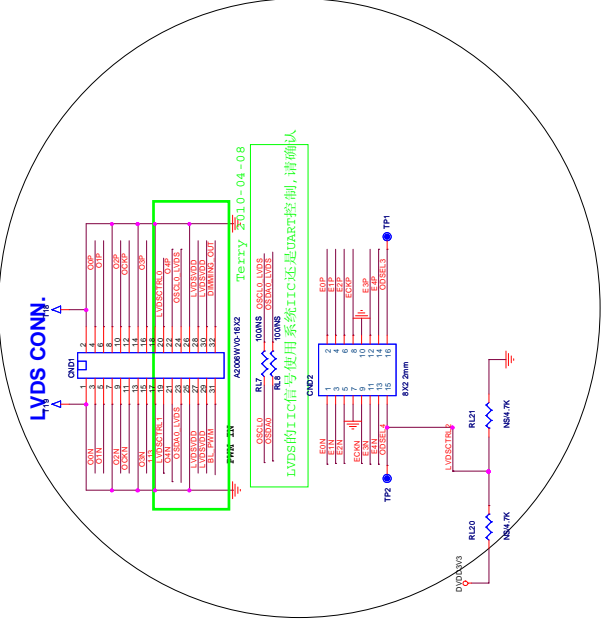
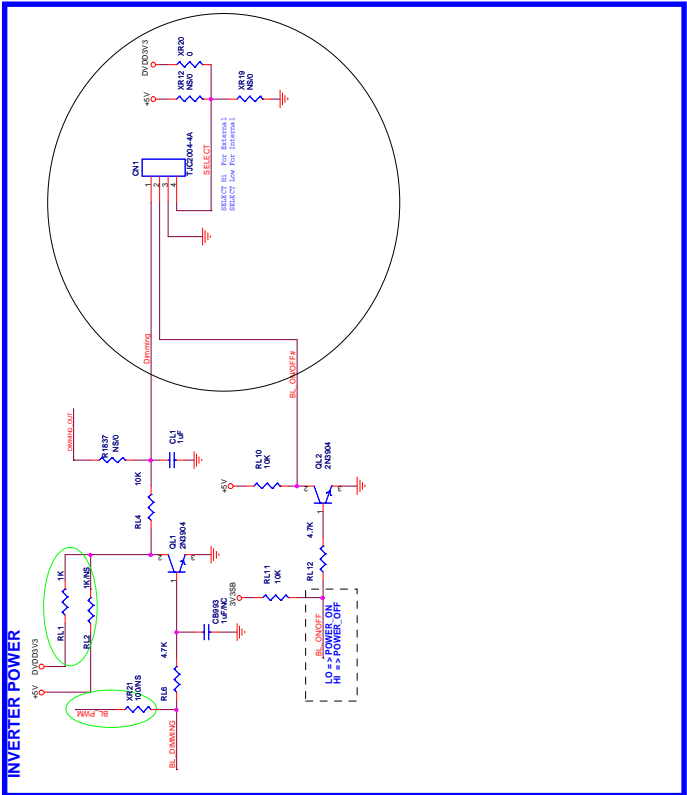




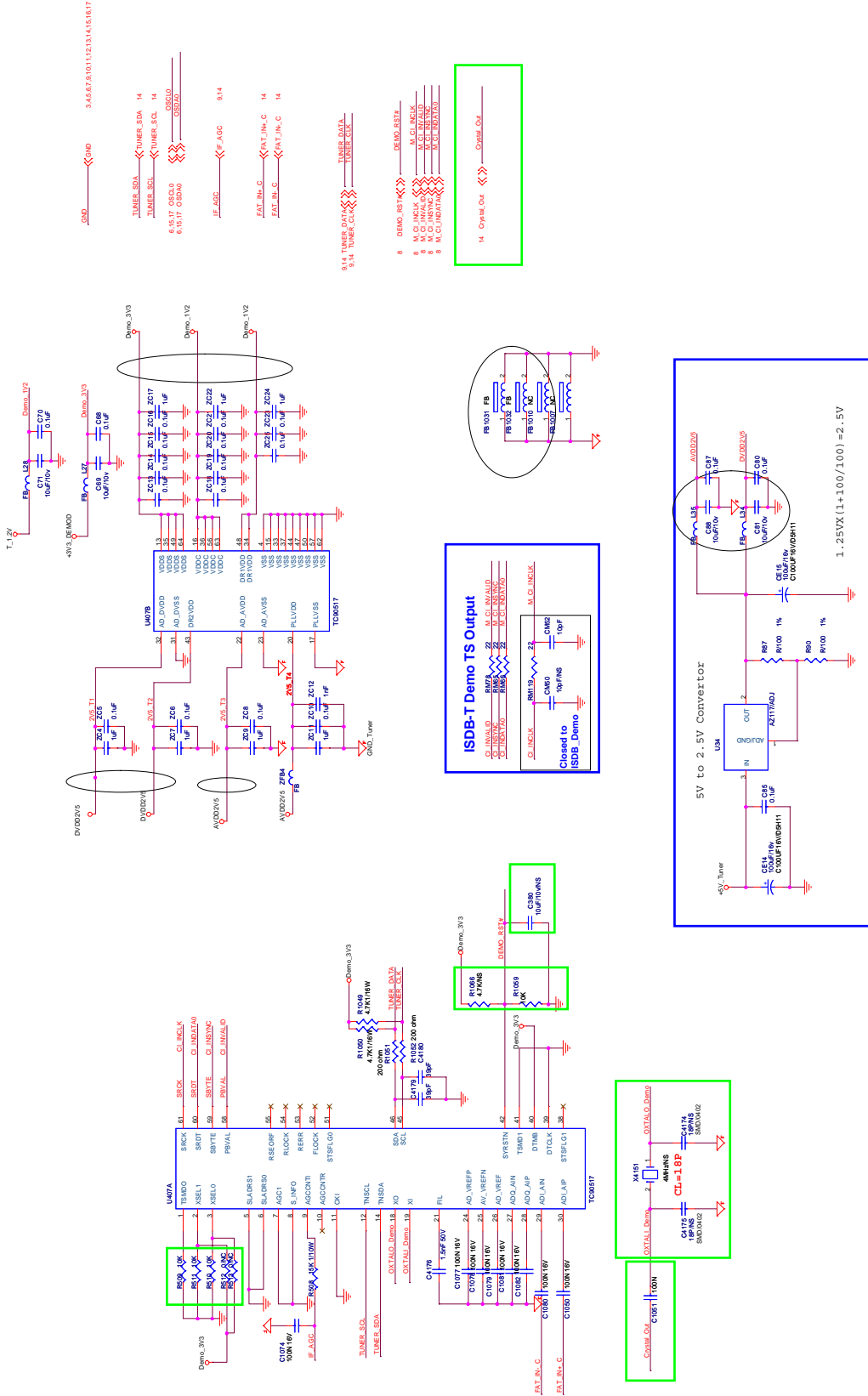
添加VGA升级电路
 2010-04-08



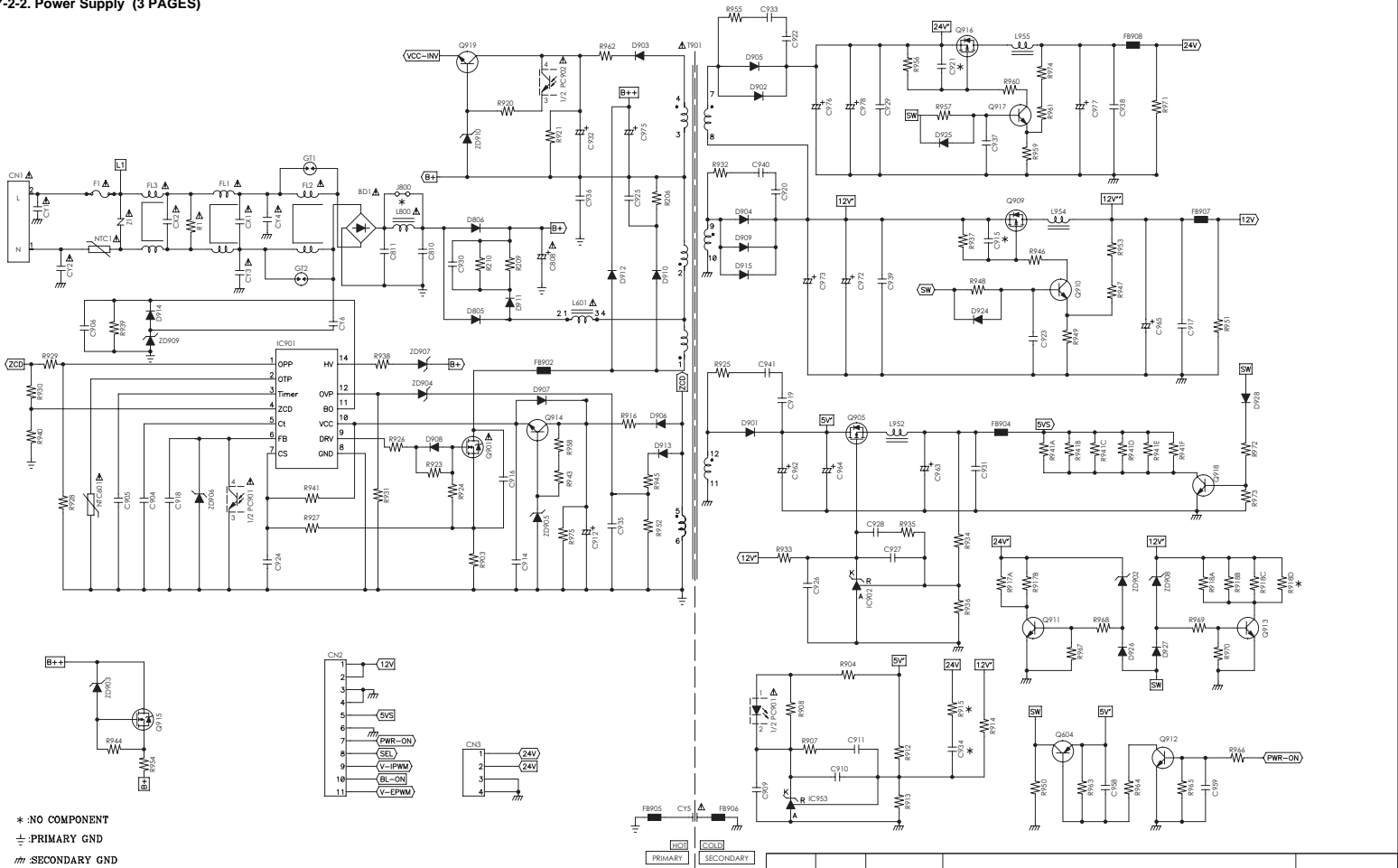
LVDS CONNECTOR



LVDS的IC信号使用系统IC还是UART控制, 请确认



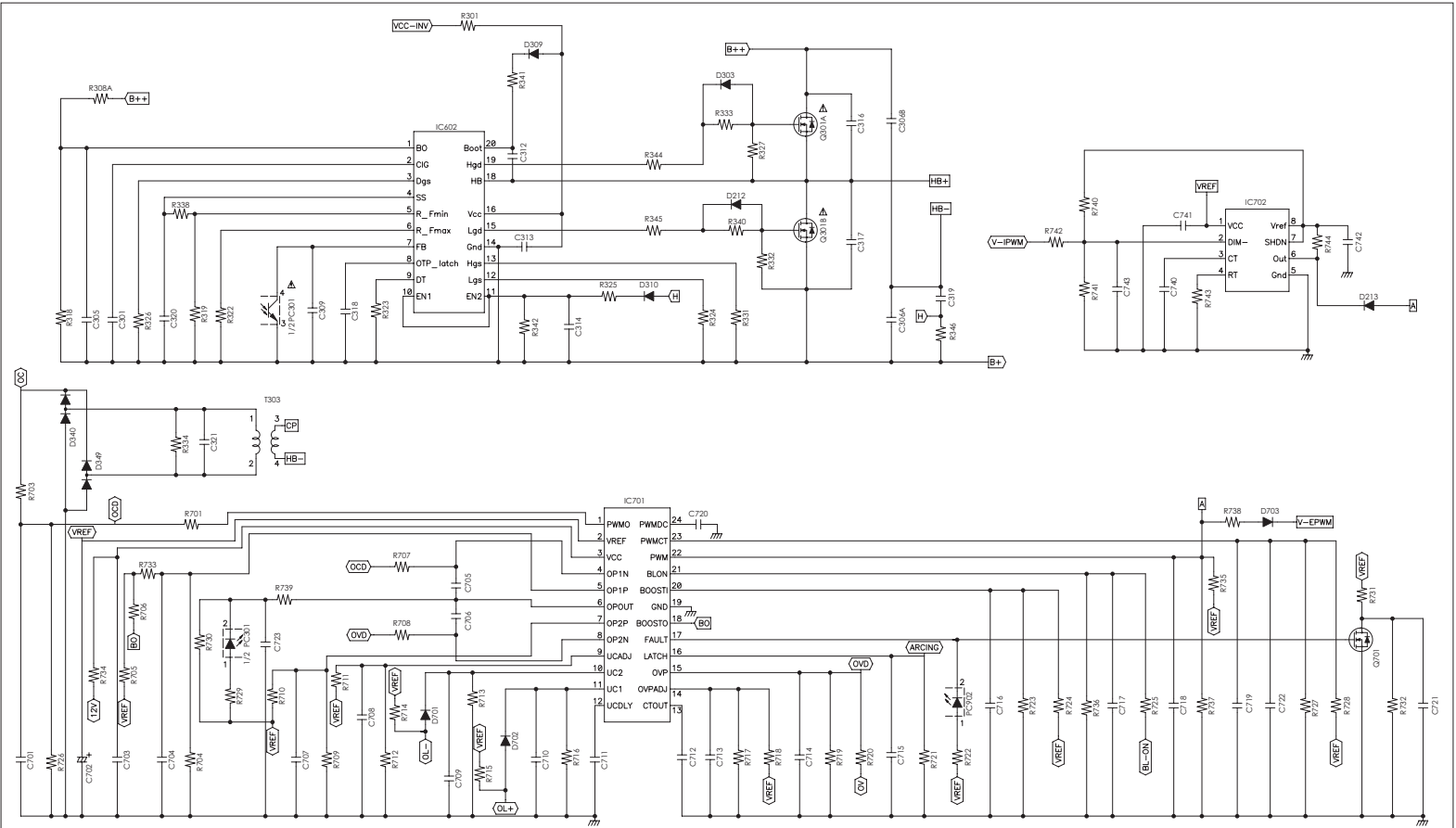
7-2-2. Power Supply (3 PAGES)



* :NO COMPONENT
 ⊕ :PRIMARY GND
 Ⓜ :SECONDARY GND

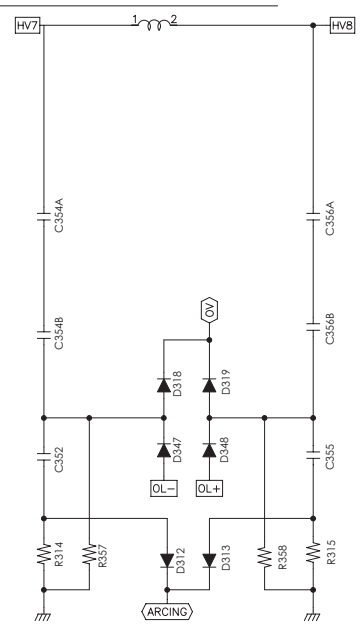
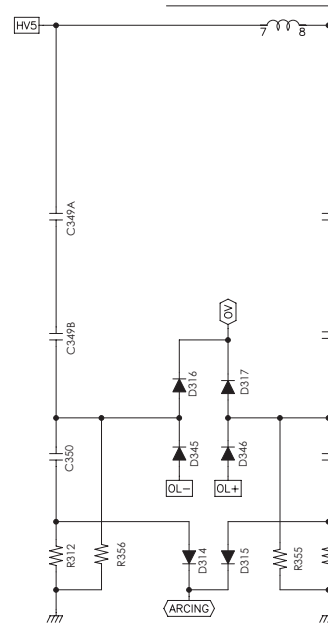
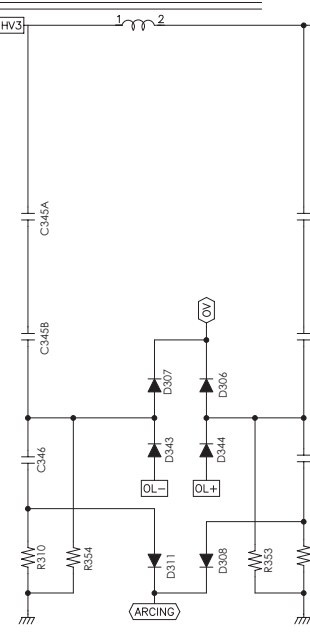
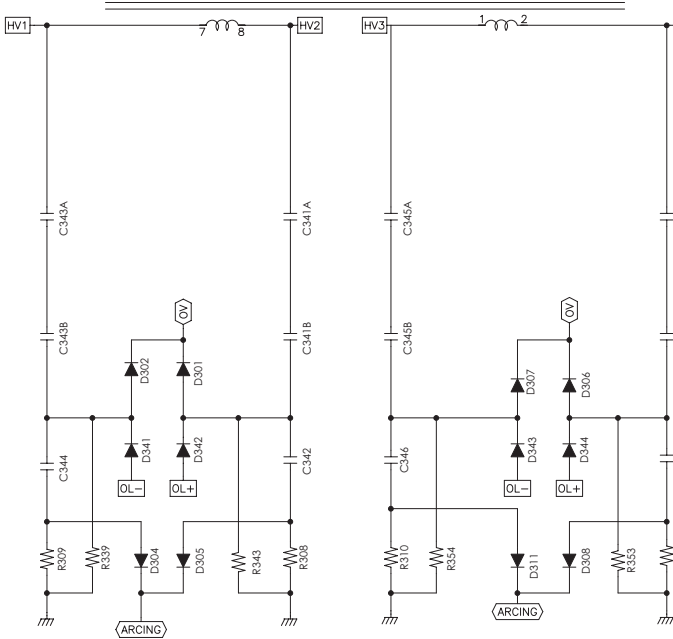
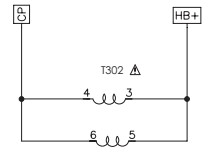
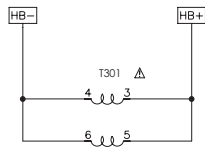
01	04/01/11	Documento	Liberação inicial		
Revisão	Data	Documento	Descrição	Revisado por: Eduardo Macedo	Aprovado por: Thomas Wang
Formato	Elaborado por: Eber Silva				Modificado por:
A3					
Escala	Dimensão	Tol.não especificada	Página	Código matriz	
S/E	mm	⊕ ⊖	1/3		
Fonte HBTV-32D03HD				Código sistema	



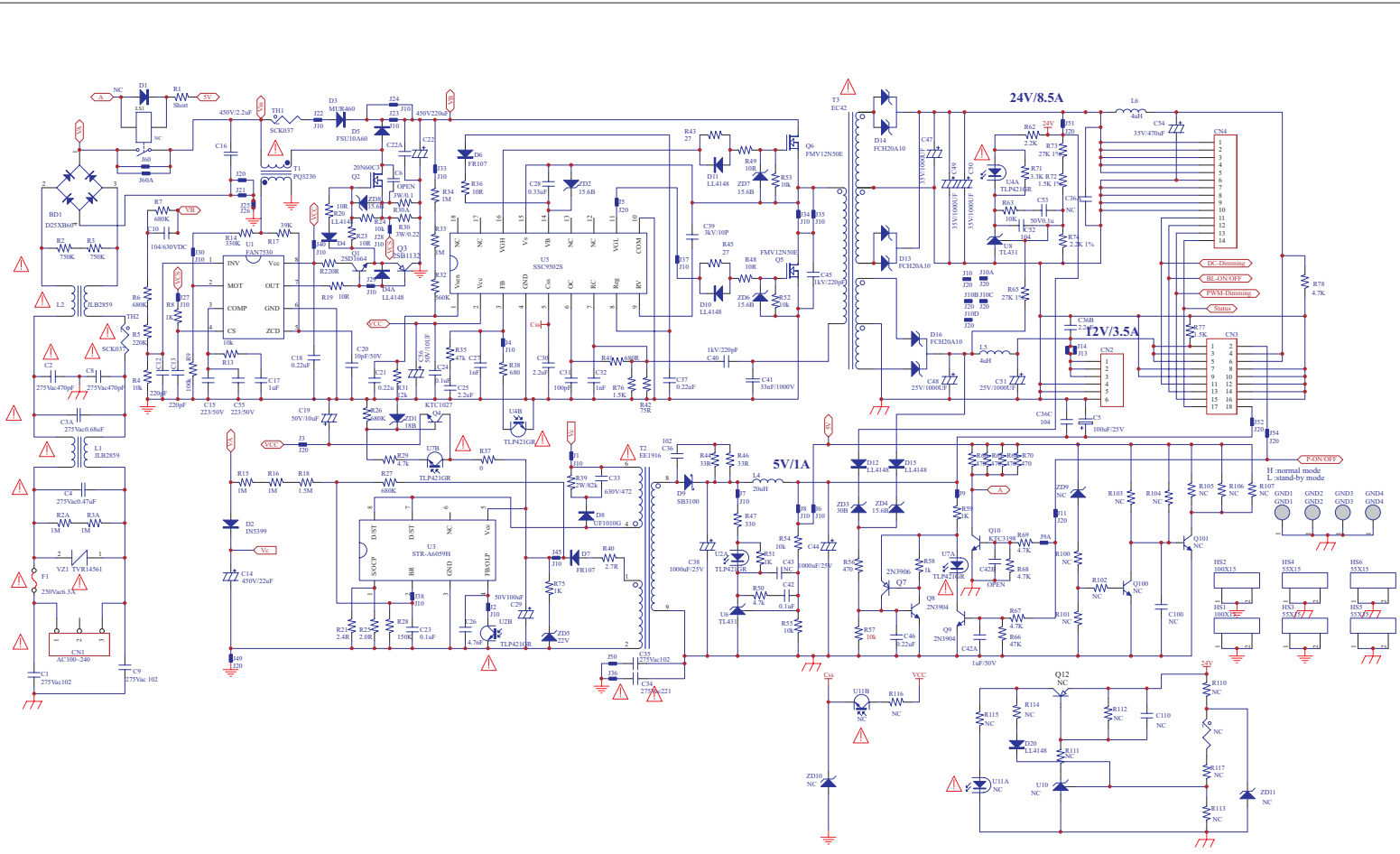


* :NO COMPONENT
 ⊥ :PRIMARY GND
 ≡ :SECONDARY GND

01	04/01/11		Liberação inicial		
Revisão	Data	Documento	Descrição		
A3		Elaborado por: Eber Silva	Revisado por: Eduardo Macedo	Aprovado por: Thomas Wang	Modificado por:
Escala	Dimensão	Tol não especificada	Página	Código matriz	
S/E	mm		2/3		
Fonte HBTV-32D03HD				Código sistema	



01	04/01/11		Liberação inicial		
Revisão	Data	Documento	Descrição		
Formato	Elaborado por: Eber Silva		Revisado por: Eduardo Macedo		Aprovado por: Thomas Wang
A3					Modificado por:
Escala	Dimensão	Tol não especificada	Página	Código matriz	
S/E	mm		3/3		
Fonte HBTV-32D03HD					Código sistema



01	07/12/10		Liberação inicial		
Revisão	Data	Documento	Descrição	Revisado por: Mateus Souza	Aprovado por: Eduardo Macedo
Formato	A3	Elaborado por: Eber Silva			
Escala	mm	Tol.não especificada	Página	Código matriz	Modificado por:
S/E	mm		1/1	Código sistema	
PCI Fonte HBTV-42D03FD					

Chapter 7. Measurements and Adjustments

7-1. Service Mode (Modo de Serviço)

7-1-1. Como entrar no modo de serviço:

Pelo controle remoto do TV, digite na sequencia as teclas:

MENU 8 8 9 3

A seguinte informação aparecerá na tela, conforme ilustração abaixo. Na opção "Info de Versão" aparecerá o modelo do processador e da tela de LCD, como no exemplo ao lado: " L_MTK5363_AU315XW03V5_BRA ".

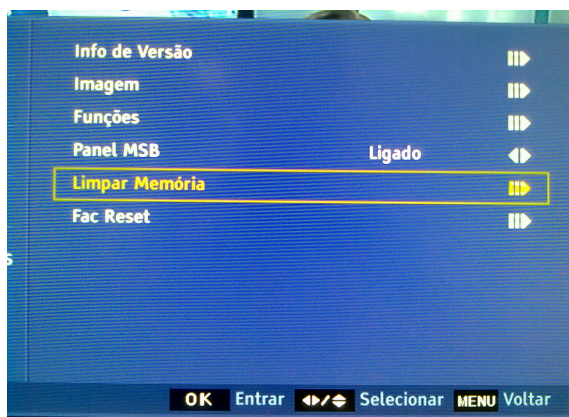
7-1-2. Sair do modo de serviço:

Para sair do modo de serviço, aperte a tecla EXIT do controle remoto, ou simplesmente desligue o aparelho.

7-2. Measurements and Adjustments (Medições e Ajustes)

NÃO HÁ AJUSTES A SEREM REALIZADOS NESTE MODO. RECOMENDA-SE NÃO ALTERAR NENHUM VALOR PRÉ-DEFINIDO DE FÁBRICA, SOB RISCO DE MAL FUNCIONAMENTO.

7-2-1. Reinicializando a memória:



Para reinicializar a Placa Principal, após a atualização de software, troca da memória flash, placa principal ou se o equipamento apresentar funcionamento instável, utilize a função "Limpar Memória" Pressione no controle remoto as teclas direcionais " ^ / v " até a opção "Clean Storage ", então pressione a tecla "> ".

NOTA: Após aplicar a reinicialização, desligue o TV por alguns segundos e religue.

Chapter 8. Firmware Update (Atualização de programa):

8-1. Initial Care (Cuidados Iniciais):

Este procedimento a seguir somente deve ser executado quando o equipamento apresentar anormalidade em sua operação, ou quando houver um comunicado oficial para realizar tal procedimento. Não faça a atualização se o equipamento estiver funcionando corretamente. Leia atentamente o procedimento todo e execute a tarefa conforme descrito a seguir. Em caso de dúvidas, solicite sempre o auxílio do suporte técnico da H-Buster.



NUNCA FAÇA ESSE PROCEDIMENTO SE A REDE ELÉTRICA ESTIVER INSTÁVEL, SOB RISCO DE DANO IRREVERSÍVEL À MEMÓRIA OU MESMO A PLACA PRINCIPAL. RECOMENDAMOS O USO DE NO-BREAK PARA A SEGURANÇA DO EQUIPAMENTO.

8-2. Initial Procedures (Procedimentos Iniciais):

8-2-1. Needed tools (Ferramentas necessárias):

- Um pen-drive vazio e formatado (FAT32) - mínimo 512MB;
- Controle remoto do equipamento;
- Versão mais recente baixada do site de serviços.

Para obter a versão mais recente, entre no site de serviços da H-Buster e faça o download conforme o modelo do equipamento e do painel de LCD (se houver). Em caso de dúvidas, entre em contato com o suporte técnico.

Links para o download dos softwares dos modelos (é preciso estar logado na Página de serviços):

HBTV-32D03HD: <http://autorizadas.hbuster.com.br/pages/visualizarArquivo.aspx?arquivo=972>

HBTV-42D03FD: <http://autorizadas.hbuster.com.br/pages/visualizarArquivo.aspx?arquivo=1040>

8-2-2. How to identify the Panel Type (Como identificar o modelo de painel de LCD):

8-2-2-1. Service Mode Menu (menu do modo de serviço):

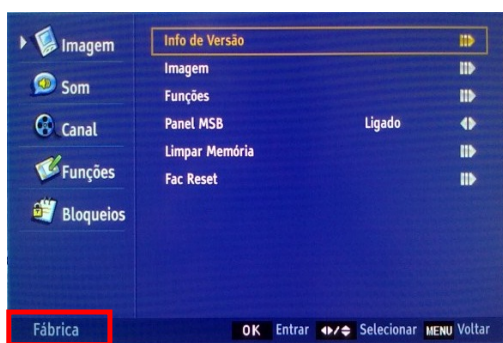


Fig. 8-1. Menu de serviços inicial

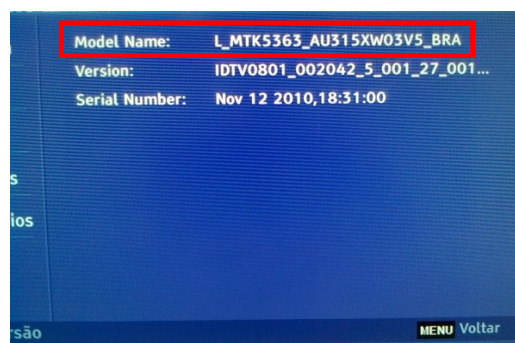
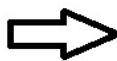


Fig. 8-2. Info de versão

8-2-2-2. Rear side of LCD Panel (lado traseiro do painel de LCD):



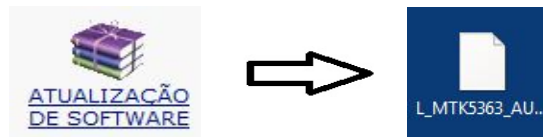
Fig. 8-3. Identificação do painel de LCD pela etiqueta colada no verso (parte interna).

NOTA: OS EXEMPLOS APRESENTADOS ACIMA SÃO MERAMENTE INFORMATIVOS. SEMPRE EXECUTE O PROCEDIMENTO ACIMA PARA EVITAR ERROS NO PEDIDO.

8-2-3. Copying the firmware to USB Memory Key (copiando o programa no pen-drive):

O arquivo que está no site de serviços está "zipado (compactado)." Para descompactá-lo, é necessário ter instalado em seu computador um programa descompactador (ex.: Winzip, WinRAR, etc.) Salve no desktop e descompacte-o no PC. Se o programa descompactador criar uma pasta, abra a pasta e copie para o pen-drive o arquivo que está dentro da pasta (NÃO COPIE A PASTA TODA).

O nome do arquivo a ser copiado para o pen-drive NÃO DEVE SER ALTERADO, CASO CONTRÁRIO O TV NÃO IRÁ RECONHECER O ARQUIVO!



8-3. Updating the firmware (Atualizando o programa):-

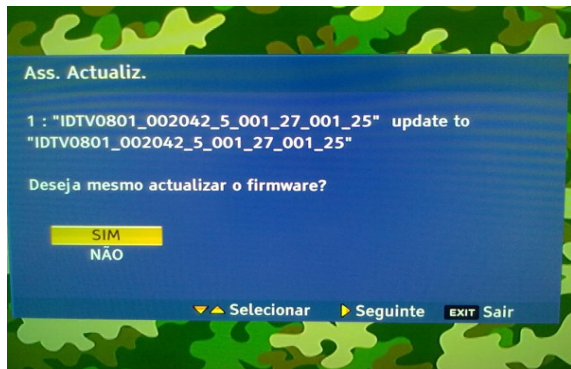
Siga os procedimentos abaixo atentamente:

- 1) Com o TV funcionando, conecte o pen-drive com o programa gravado, na porta USB;
- 2) Após alguns segundos, abrirá uma "janela" informando se deseja atualizar o software da TV, selecione "SIM" e aperte OK no controle;
- 3) Após confirmar, aparecerá na tela "Atualizando...". Aguarde até o final;
- 4) Ao término, desligue o equipamento pelo botão POWER e religue;
- 5) Entre no menu de serviços e faça a reinicialização da memória com o comando LIMPAR MEMÓRIA. (consulte o capítulo 7 para maiores detalhes).

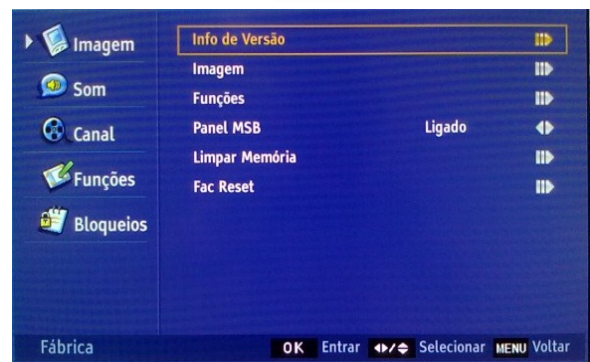
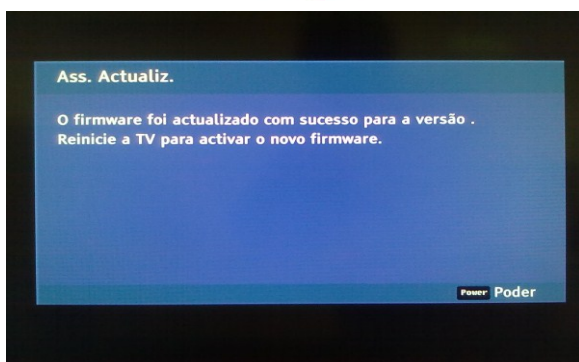
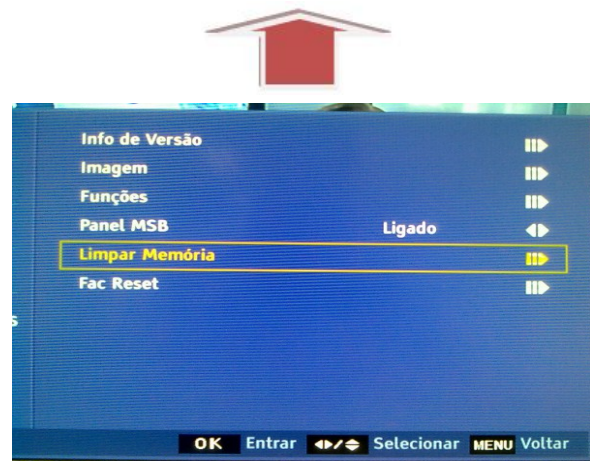
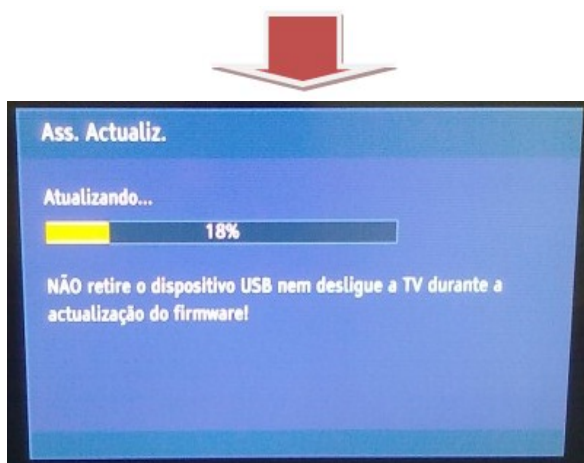


**CUIDADO!!! DURANTE A ATUALIZAÇÃO
NUNCA RETIRE DA TOMADA OU DESLIGUE O APARELHO!!!
(LEIA A ADVERTÊNCIA NO INÍCIO DESTE CAPÍTULO)**

8-4. Firmware Update Diagrams (Diagrama da atualização de programa):



Confira o funcionamento completo do TV (sinal digital, entradas HDMI, Video Componente, AV, etc.)



ENTRE NO MENU DE SERVIÇOS (MENU 8893)

Chapter 9. Troubleshooting (Guia de defeitos)

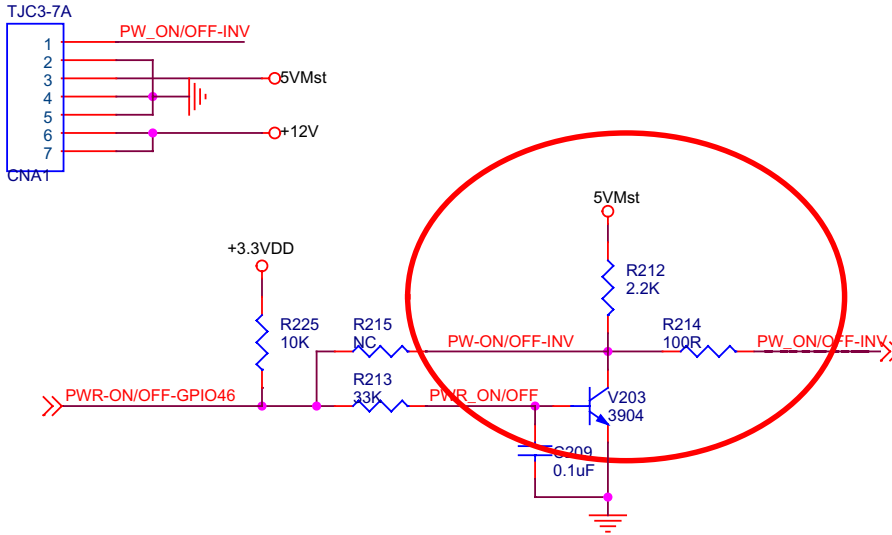
9-1. Power Supply Board Failure Check.

State: No picture

First, check cables which connect with PSU, then check as follows

Check input voltage

voltage: +5VSB----POWER ON(2.6V) -----+12V



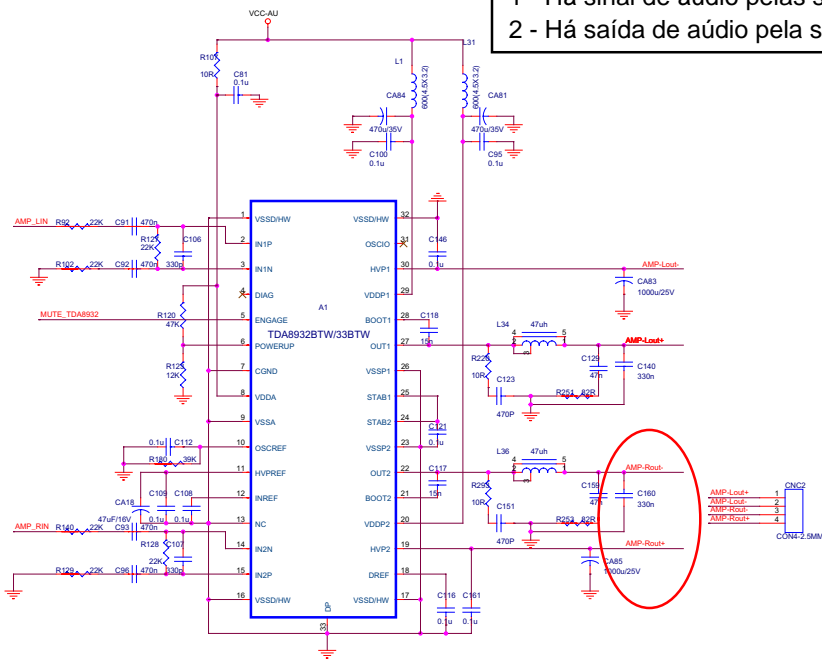
State: No sound

First, check cables which connect with PSU, then check as follows

- 1) Check input voltage as NO picture
- 2) Check speaker output

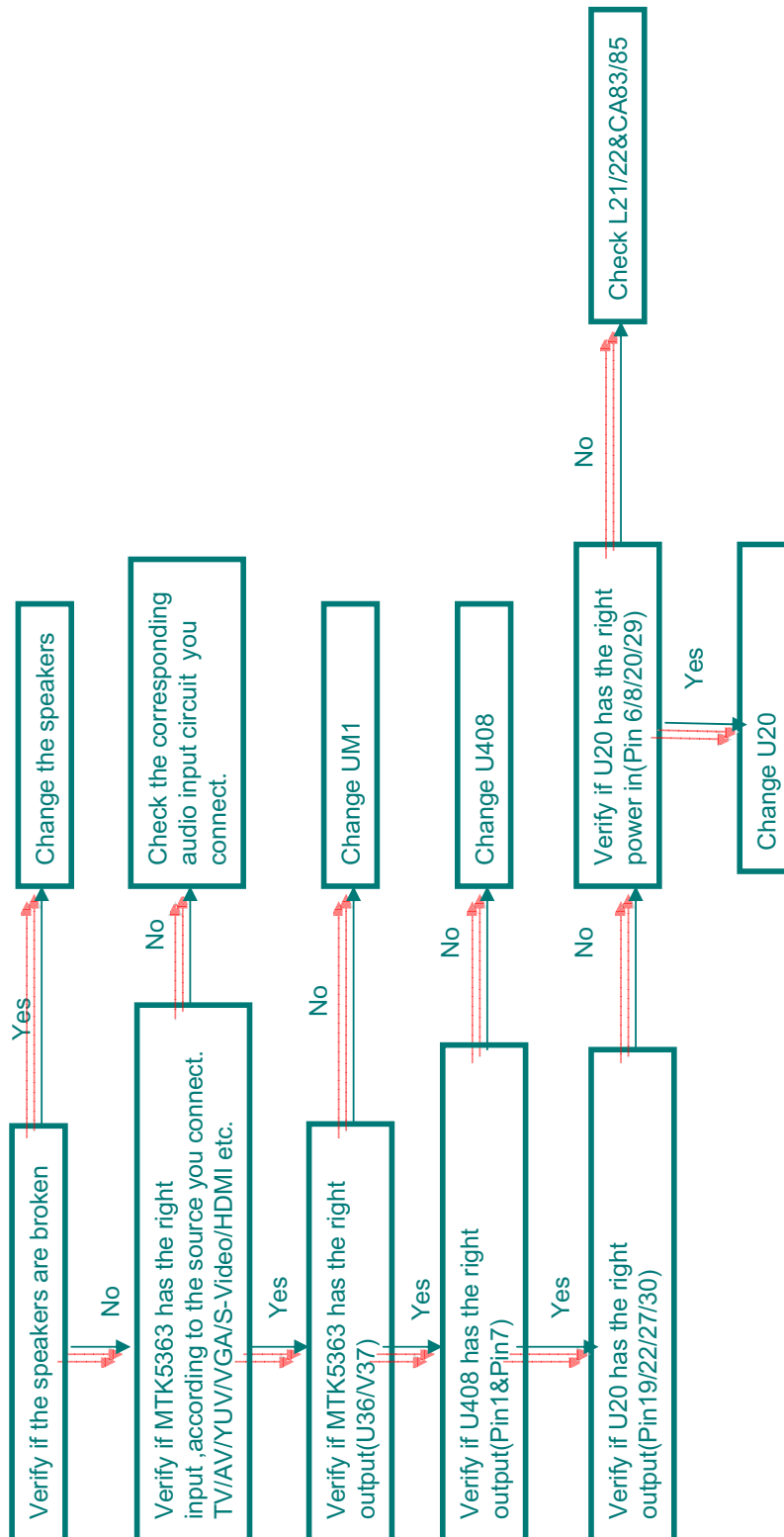
First, check speaker anode(+) and cathode(-), confirm speaker short or not. If short ,replace speaker.

Confirme se:
 1 - Há sinal de áudio pelas saídas RCA;
 2 - Há saída de áudio pela saída do fone de ouvido.



9-2. Mainboard Failure Check

Symptom: no sound but have picture



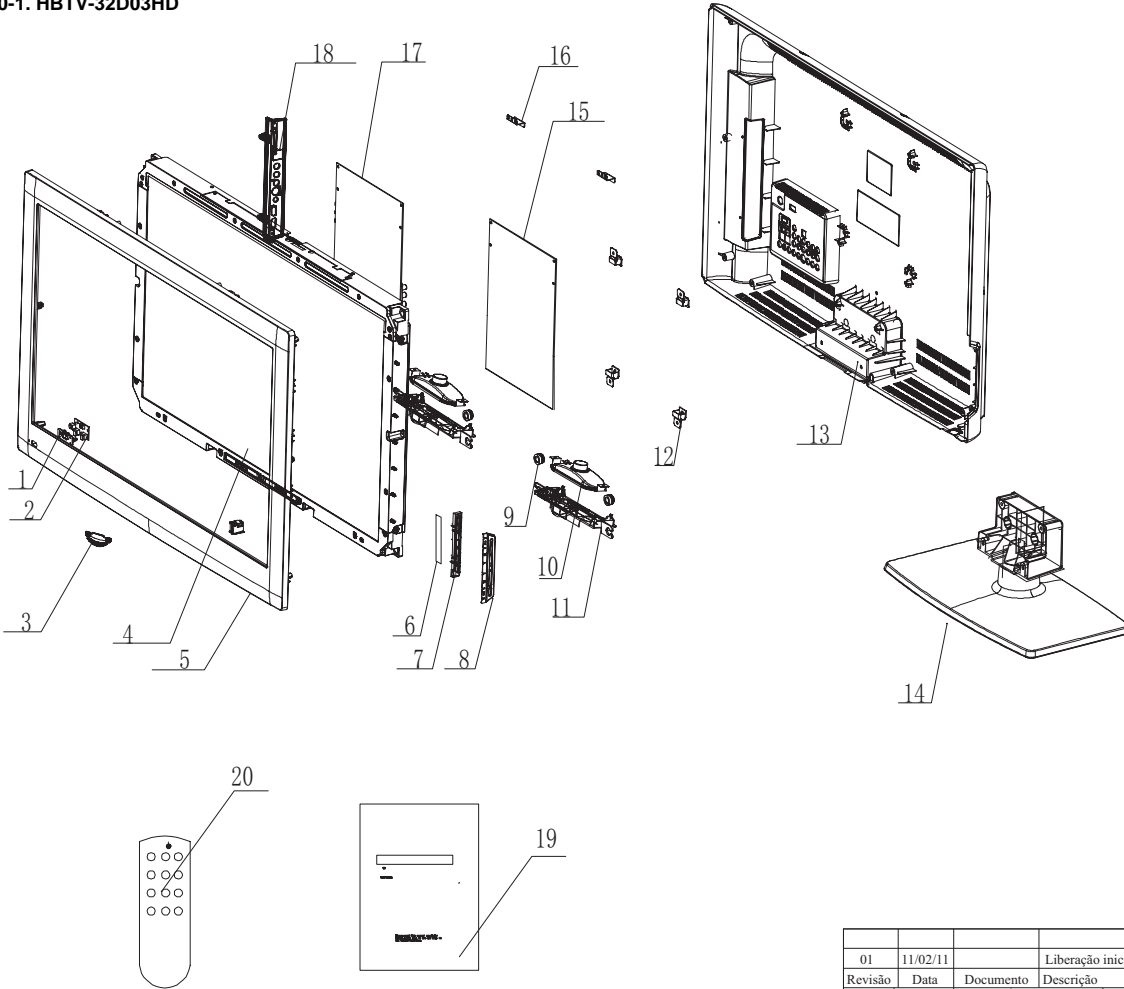
Chapter 10. Exploded View and Parts List

10-1. HBTV-32D03HD

10-2. HBTV-42D03FD

(SEE NEXT PAGES)

10-1. HBTV-32D03HD



OBS.:

OS ITENS MARCADOS COM (***) SOMENTE PODEM SER SOLICITADOS
 MEDIANTE CONSULTA AO SUPORTE TÉCNICO;
 OS ITENS MARCADOS COMO "NF" NÃO SÃO FORNECIDOS.

No.	Descrição	Código		Qtd.
20	Controlo Remoto	410854		1
19	Manual do Usuário	410857		1
18	NF			
17	Placa Principal	410852	(***)	1
16	NF			
15	Placa da Fonte	410853	(***)	1
14	Base Plástica Pedestal	410385		1
13	Gabinete Traseiro	410384		1
12	NF			
11	NF			
10	Alto Falantes	410847		2
9	NF			
8	NF			
7	Teclado Gabinete Frontal	410679		1
6	PCI Teclado	410849		1
5	Panel Frontal	410383		1
4	Tela de Cristal Líquido	410851	(***)	1
3	NF			
2	PCI Sensor IR	410848		1
1	NF			

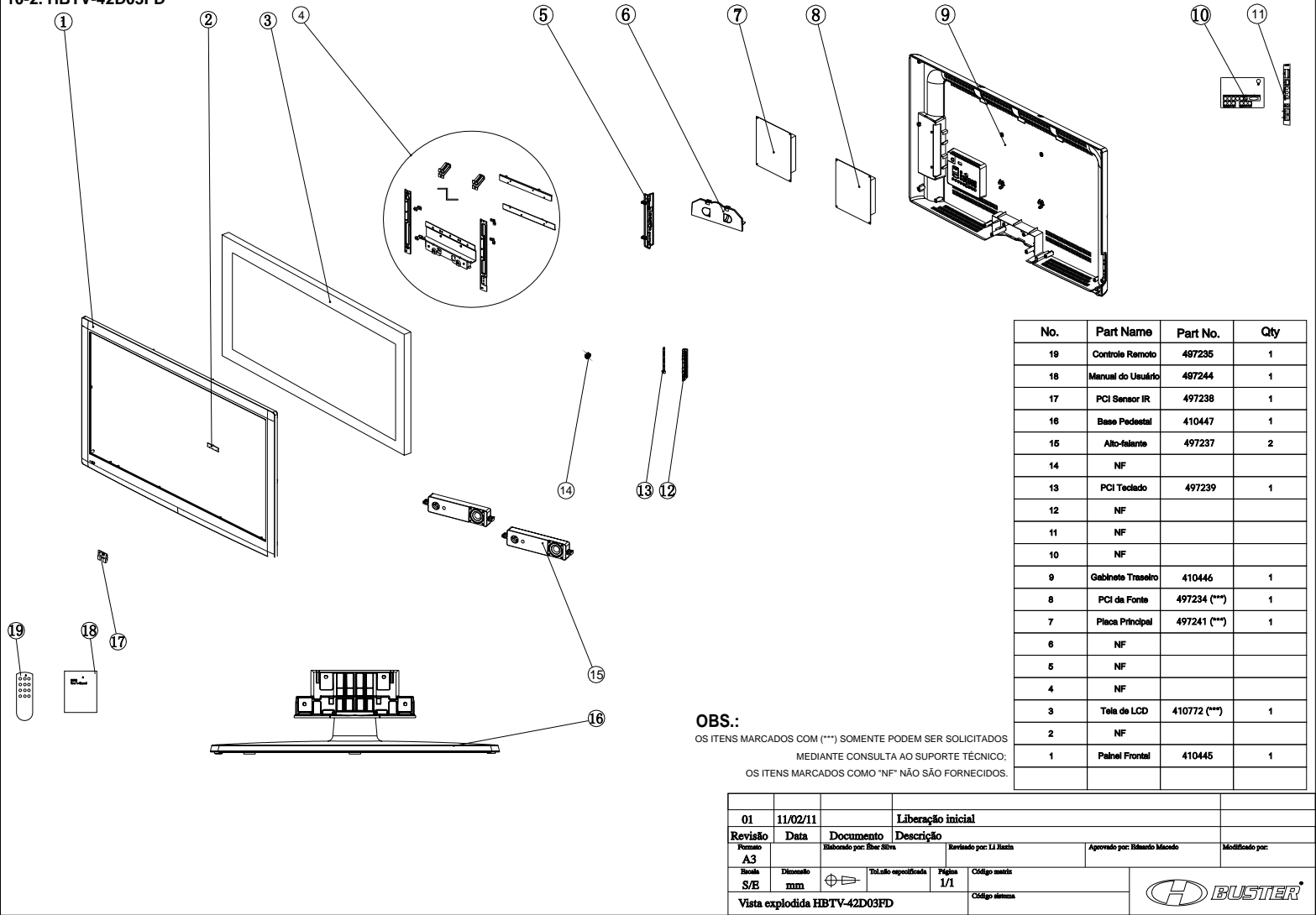
01	11/02/11		Liberação inicial			
Revisão	Data	Documento	Descrição			
Formato	Elaborado por: Eber Silva		Revisado por: L1 Juxin		Aprovado por: Eduardo Macedo	Modificado por:
A3						
Escala	Dimensão	Tol. não especificada	Página	Código matriz		
S/E	mm	\oplus \ominus	1/1			
Vista explodida HBTV-32D03HD					Código sistema	

LISTA DE PEÇAS HBTV-32D03HD

Código	Descrição
410385	Base Plastica Pedestal HBTV-32D03
410383	Painel Frontal HBTV-32D03
410850	Calços HBTV-32D03
410384	Gabinete Traseiro HBTV-32D03
410847	Alto Falante HBTV-32D03
410848	PCI Sensor IR HBTV-32D03
410849	PCI Teclado HBTV-32D03
410382	Embalagem HBTV-32D03
410851(***)	Tela Cristal Liquido T315XW03 V5
410852(***)	Placa Principal HBTV-32D03
410853(***)	PCI Fonte HBTV-32D03
410854	Controle Remoto HBTV-32D03
410855	Cabo LVDS HBTV-32D03
410856	Cabo de Força HBTV-32D03
410679	Teclado Gabinete Frontal
410857	Manual HBTV-32D03HD

OBS.: OS ITENS MARCADOS COMO (*) SOMENTE
PODEM SER SOLICITADOS MEDIANTE CONTATO COM O
SUPORTE TÉCNICO.**

10-2. HBTV-42D03FD



No.	Part Name	Part No.	Qty
19	Controle Remoto	497235	1
18	Manual do Usuário	497244	1
17	PCI Sensor IR	497238	1
16	Base Pedestal	410447	1
15	Alto-falante	497237	2
14	NF		
13	PCI Teclado	497239	1
12	NF		
11	NF		
10	NF		
9	Gabinete Traseiro	410446	1
8	PCI da Fonte	497234 (***)	1
7	Placa Principal	497241 (***)	1
6	NF		
5	NF		
4	NF		
3	Tela de LCD	410772 (***)	1
2	NF		
1	Panel Frontal	410445	1

OBS.:
 OS ITENS MARCADOS COM (***) SOMENTE PODEM SER SOLICITADOS
 MEDIANTE CONSULTA AO SUPORTE TÉCNICO.
 OS ITENS MARCADOS COMO "NF" NÃO SÃO FORNECIDOS.

01	11/02/11	Liberação inicial	
Revisão	Data	Documento	Descrição
Formato A3		Elaborado por: Eber Silva	Revisado por: L.J. Jassin
Revisão S/E	Dimensão mm	Título especificação	Página 1/1
Vista explodida HBTV-42D03FD			Código matriz
			Código desenho



LISTA DE PEÇAS HBTV-42D03FD

Código	Descrição
410447	Base Plastica Pedestal HBTV-42D03
410445	Painel Frontal HBTV-42D03
497236	PCI stand by HBTV-42D03
410446	Gabinete Traseiro HBTV-42D03
497237	Alto Falante HBTV-42D03
497238	PCI Sensor IR HBTV-42D03
497239	PCI Teclado HBTV-42D03
410444	Embalagem HBTV-42D03
497240	Tampa Inferior HBTV-42D03
410772(***)	Tela Cristal Liquido T420HW06 V2/AU
497241(***)	Placa Principal HBTV-42D03
497234(***)	PCI Fonte HBTV-42D03
497235	Controle Remoto HBTV-42D03
497242	Cabo LVDS HBTV-42D03
497243	Cabo de Força HBTV-42D03
497244	Manual HBTV-42D03

OBS.: OS ITENS MARCADOS COMO (*) SOMENTE
PODEM SER SOLICITADOS MEDIANTE CONTATO
COM O SUPORTE TÉCNICO.**