

**R135-Series Rotary Switches**



The R135 and R135A-Series rotary switches are single pole, single throw “L” rated up to 3A, feature an ON-OFF repeating action, and are available with a nylon actuating knob; nylon snap-in bracket or nickel-plated brass bushing. These switches are typically used to control lighting functions.

**Dielectric Strength**

*UL/CSA:*  
1000V - live to dead metal parts

**Electrical Life**

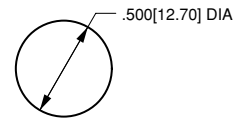
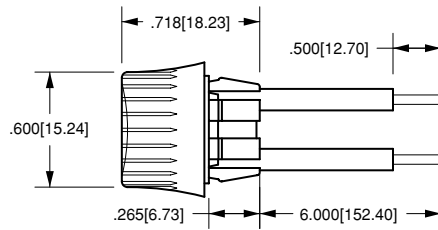
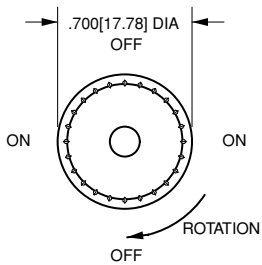
100,000 cycles

**Mechanical Life**

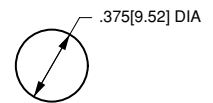
100,000 cycles

**Operating Temperature**

32°F to 185°F (0°C to 85°C)



**NYLON BEZEL MOUNTING HOLE**  
Snaps into .500 [12.70] Dia. hole  
Panel Thickness: .020 [508] to .078 [1.98]



**THREADED BUSHING MOUNTING HOLE**  
Fits into .375 [9.52] Dia. hole  
Bushing Length: .312 [7.92]

**R135-A - BL**

<sup>1</sup>  
Base Part Number

<sup>2</sup>  
Knob Color

**1 BASE PART NUMBER: SERIES/CIRCUITRY/RATING/TERMINATION**  
1.5A 250 VAC; 3A 125 VAC L; 5A 12 VDC

OFF-ON repeating	.375 threaded bushing	Wire Leads
OFF-ON repeating	nylon snap-in bezel	<b>R135</b>
		<b>R135-A</b>

**2 KNOB COLOR<sup>1</sup>**

<b>BL</b> black	<b>WH</b> white
-----------------	-----------------

**NOTES**

Standard Wire Leads are 6" long, stripped 1/2" black. If different length required, please specify at the end of the part number. ex. R135-A-BL/20"

Panel Cut-Out Recommendations: For sheet metal panels, switch must enter panel in same direction as the punch. Burr on bottom. Test cut hole in actual material.

<sup>1</sup> Custom colors available. Consult factory.