

# aiwa



## CDC-X126 CDC-X136

STEREO CAR CD RECEIVER

• BASIC CD MECHANISM: TN-CCD1001-113J

• TYPE: YZ<X126>  
YH<X136>

**SIMPLE MANUAL**

• Replace this Service Manual with "Revision Publishing" when it is issued.

S/M Code No. 09-993-400-5T2

MANUAL  
SERVICE

# ELECTRICAL MAIN PARTS LIST - 1/4

NOTE: The characters in the suffix column indicate the part usage.

REF.NO	PARTS NO.	KANRI NO.	DESCRIPTION	SUFFIX
126YZ	.....	XX	.....	A
136YH	.....	XX	.....	B
C	907	87-010-322-080	C-CAP,S 100P-50 CH	AB
C	912	87-010-194-080	CAP,CHIP 0.047	AB
C	913	87-010-196-080	CHIP CAPACITOR,0.1-25	AB
C	915	87-010-196-080	CHIP CAPACITOR,0.1-25	AB
C	919	87-010-315-080	C-CAP,S 27P-50 CH	AB
C	918	87-010-322-080	C-CAP,S 100P-50 CH	AB
C	917	87-010-322-080	C-CAP,S 100P-50 CH	AB
C	914	87-010-493-040	CAP,E 0.47-50 GAS	AB
C	916	87-010-553-040	CAP,E 47-16 GAS	AB
C	911	87-010-555-040	CAP,E 100-10 GAS	AB
C	910	87-010-555-040	CAP,E 100-10 GAS	AB
C	925	87-010-178-080	CHIP CAP 1000P	AB
C	927	87-010-196-080	CHIP CAPACITOR,0.1-25	AB
C	920	87-010-314-080	C-CAP,S 22P-50V	AB
C	921	87-010-322-080	C-CAP,S 100P-50 CH	AB
D	916	87-017-932-080	ZENER,MTJ6.2B	AB
D	919	87-017-932-080	ZENER,MTJ6.2B	AB
D	918	87-017-932-080	ZENER,MTJ6.2B	AB
D	913	87-020-465-080	DIODE,1SS133 (110MA)	AB
D	924	87-017-932-080	ZENER,MTJ6.2B	AB
D	921	87-017-932-080	ZENER,MTJ6.2B	AB
IC	901	87-A21-203-010	C-IC,TC9323F-006	AB
IC	902	88-KT1-606-080	IC,PST994D	AB
LED	101	87-027-262-010	LEDE,TLR-124(RED)	AB
Q	418	89-324-122-080	TR,2SC2412K	AB
Q	908	87-026-235-080	CHIP-TR,DTC114EK	AB
Q	909	87-A30-289-040	C-TR,2SA1037AK(R)	AB
Q	911	87-026-235-080	CHIP-TR,DTC114EK	AB
S	110	87-A91-070-010	SW,TACT SKHHLV	AB
SW	902	87-A91-152-010	SW,SL 1-1-2 SSSS212-11-A	AB
X	901	87-A70-175-010	VIB,XTAL 4.5MHZ AT-49	AB
C	204	87-010-176-080	C-CAP,S 680P-50 SL	AB
C	201	87-010-178-080	CHIP CAP 1000P	AB
C	203	87-010-196-080	CHIP CAPACITOR,0.1-25	AB
C	208	87-010-196-080	CHIP CAPACITOR,0.1-25	AB
C	205	87-010-198-080	CAP,CHIP 0.022	AB
C	207	87-010-213-080	C-CAP,S 0.015-50 B	AB
C	209	87-010-552-040	CAP,E 22-16 GAS	AB
C	202	87-010-553-040	CAP,E 47-16 GAS	AB
C	206	87-010-805-080	CAP,S 1-16	AB
C	216	87-010-148-080	CAP,CHIP S 75P SL	AB
C	217	87-010-194-080	CAP,CHIP 0.047	AB
C	211	87-010-196-080	CHIP CAPACITOR,0.1-25	AB
C	213	87-010-196-080	CHIP CAPACITOR,0.1-25	AB
C	215	87-010-315-080	C-CAP,S 27P-50 CH	AB
C	210	87-010-498-040	CAP,E 10-16 GAS	AB
C	212	87-010-553-040	CAP,E 47-16 GAS	AB
C	214	87-010-553-040	CAP,E 47-16 GAS	AB
C	218	87-012-140-080	CAP 470P	AB
C	228	87-010-180-080	C-CER 1500P	AB
C	224	87-010-196-080	CHIP CAPACITOR,0.1-25	AB
C	229	87-010-196-080	CHIP CAPACITOR,0.1-25	AB
C	226	87-010-196-080	CHIP CAPACITOR,0.1-25	AB
C	227	87-010-196-080	CHIP CAPACITOR,0.1-25	AB
C	223	87-010-553-040	CAP,E 47-16 GAS	AB
C	225	87-010-553-040	CAP,E 47-16 GAS	AB
C	236	87-010-196-080	CHIP CAPACITOR,0.1-25	AB
C	237	87-010-198-080	CAP,CHIP 0.022	AB
C	239	87-010-494-040	CAP,E 1-50 GAS	AB
C	238	87-010-498-040	CAP,E 10-16 GAS	AB
C	235	87-010-498-040	CAP,E 10-16 GAS	AB
C	231	87-010-553-040	CAP,E 47-16 GAS	AB
C	230	87-010-553-040	CAP,E 47-16 GAS	AB
C	242	87-010-184-080	CHIP CAPACITOR 3300P(K)	AB
C	241	87-010-184-080	CHIP CAPACITOR 3300P(K)	AB
C	243	87-010-186-080	CAP,CHIP 4700P	AB
C	244	87-010-188-080	CAP,CHIP 6800P	AB
C	240	87-010-196-080	CHIP CAPACITOR,0.1-25	AB
C	247	87-010-197-080	CAP,CHIP 0.01 DM	AB
C	246	87-010-197-080	CAP,CHIP 0.01 DM	AB
C	249	87-010-321-080	CHIP CAPACITOR,82P(J)	AB
C	248	87-010-321-080	CHIP CAPACITOR,82P(J)	AB
C	245	87-010-322-080	C-CAP,S 100P-50 CH	AB
C	255	87-010-196-080	CHIP CAPACITOR,0.1-25	AB
C	250	87-010-553-040	CAP,E 47-16 GAS	AB
C	257	87-010-553-040	CAP,E 47-16 GAS	AB
C	254	87-010-553-040	CAP,E 47-16 GAS	AB
C	259	87-012-153-080	C-CAP,S 120P-50 CH	AB
C	253	87-012-153-080	C-CAP,S 120P-50 CH	AB
C	251	87-012-153-080	C-CAP,S 120P-50 CH	AB
C	258	87-012-153-080	C-CAP,S 120P-50 CH	AB
C	264	87-010-494-040	CAP,E 1-50 GAS	AB
C	266	87-010-494-040	CAP,E 1-50 GAS	AB
C	269	87-010-553-040	CAP,E 47-16 GAS	AB
C	268	87-010-553-040	CAP,E 47-16 GAS	AB

# ELECTRICAL MAIN PARTS LIST - 2/4

C	263	87-012-153-080	C-CAP,S 120P-50 CH	AB.....
C	262	87-012-153-080	C-CAP,S 120P-50 CH	AB.....
C	270	87-010-196-080	CHIP CAPACITOR,0.1-25	AB.....
C	272	87-010-315-080	C-CAP,S 27P-50 CH	AB.....
C	276	87-010-315-080	C-CAP,S 27P-50 CH	AB.....
C	271	87-010-315-080	C-CAP,S 27P-50 CH	AB.....
C	274	87-010-315-080	C-CAP,S 27P-50 CH	AB.....
C	275	87-010-315-080	C-CAP,S 27P-50 CH	AB.....
C	273	87-010-315-080	C-CAP,S 27P-50 CH	AB.....
CON	201	87-A60-859-010	CONN,12P TKC-F12X-K1	AB.....
CON	202	87-A60-860-010	CONN,14P TKC-F14X-K1	AB.....
D	201	87-020-465-080	DIODE,1SS133 (110MA)	AB.....
D	202	87-A40-344-080	ZENER,MTZJ6.2C	AB.....
IC	203	87-017-801-080	IC,TA2058F	AB.....
IC	205	87-027-842-080	IC,NJM2904M	AB.....
IC	202	87-070-336-010	IC,TC9284BF	AB.....
IC	204	87-A20-712-040	C-IC,BA6417F	AB.....
IC	201	87-A21-204-010	C-IC,TA2065F	AB.....
L	201	87-003-149-080	COIL,47UH	AB.....
Q	206	87-026-235-080	CHIP-TR,DTC114EK	AB.....
Q	205	87-A30-289-040	C-TR,2SA1037AK(R)	AB.....
Q	201	87-A30-289-040	C-TR,2SA1037AK(R)	AB.....
SFR	202	87-024-432-080	SFR,4.7K RH063EC	AB.....
SFR	201	87-024-437-080	SFR100K,RH063EC	AB.....
X	201	81-592-641-010	VIB,CER 16.93MHZ	AB.....
C	101	87-010-196-080	CHIP CAPACITOR,0.1-25	AB.....
C	109	87-010-494-040	CAP,E 1-50 GAS	AB.....
C	108	87-010-494-040	CAP,E 1-50 GAS	AB.....
C	104	87-010-498-040	CAP,E 10-16 GAS	AB.....
C	105	87-010-498-040	CAP,E 10-16 GAS	AB.....
C	103	87-012-155-080	C-CAP 180P-50CH	AB.....
C	119	87-010-196-080	CHIP CAPACITOR,0.1-25	AB.....
C	114	87-010-197-080	CAP,CHIP 0.01 DM	AB.....
C	115	87-010-495-040	CAP,E 2.2-50 GAS	AB.....
C	126	87-010-197-080	CAP,CHIP 0.01 DM	AB.....
C	120	87-010-197-080	CAP,CHIP 0.01 DM	AB.....
C	127	87-010-197-080	CAP,CHIP 0.01 DM	AB.....
C	121	87-010-220-080	C-CAP,S 0.018-25 B	.....
C	122	87-010-220-080	C-CAP,S 0.018-25 B	.....
C	125	87-012-155-080	C-CAP 180P-50CH	AB.....
C	121	87-012-365-080	C-CAP,S 0.027-25VBK	AB.....
C	122	87-012-365-080	C-CAP,S 0.027-25VBK	AB.....
C	280	87-010-197-080	CAP,CHIP 0.01 DM	AB.....
C	882	87-010-182-080	C-CAP,S 2200P-50 B	AB.....
C	881	87-010-182-080	C-CAP,S 2200P-50 B	AB.....
C	880	87-010-182-080	C-CAP,S 2200P-50 B	AB.....
D	101	88-KC4-607-080	PROTECTOR,DSP-301N-A21F	AB.....
L	101	87-003-143-080	COIL 4.7 UH	AB.....
L	103	87-005-849-080	COIL,10UH(CECS)	AB.....
L	102	8Z-KT1-619-010	COIL,68MH K7-D	AB.....
L	202	87-A50-079-080	COIL,22UH (CECS)	AB.....
L	401	87-005-849-080	COIL,10UH(CECS)	AB.....
Q	101	87-026-235-080	CHIP-TR,DTC114EK	AB.....
Q	104	87-026-235-080	CHIP-TR,DTC114EK	AB.....
Q	102	87-A30-289-040	C-TR,2SA1037AK(R)	AB.....
Q	103	87-A30-289-040	C-TR,2SA1037AK(R)	AB.....
Q	106	89-324-122-080	TR,2SC2412K	AB.....
Q	105	89-324-122-080	TR,2SC2412K	AB.....
Q	111	87-026-235-080	CHIP-TR,DTC114EK	AB.....
Q	110	87-A30-289-040	C-TR,2SA1037AK(R)	AB.....
TU	101	8Z-KT1-631-010	TU UNIT,FAE347-A02	AB.....
C	406	87-010-494-040	CAP,E 1-50 GAS	AB.....
C	408	87-010-494-040	CAP,E 1-50 GAS	AB.....
C	407	87-010-494-040	CAP,E 1-50 GAS	AB.....
C	401	87-010-494-040	CAP,E 1-50 GAS	AB.....
C	405	87-010-494-040	CAP,E 1-50 GAS	AB.....
C	402	87-010-494-040	CAP,E 1-50 GAS	AB.....
C	409	87-010-498-040	CAP,E 10-16 GAS	AB.....
C	412	87-010-494-040	CAP,E 1-50 GAS	AB.....
C	411	87-010-494-040	CAP,E 1-50 GAS	AB.....
C	413	87-010-498-040	CAP,E 10-16 GAS	AB.....
C	419	87-010-498-040	CAP,E 10-16 GAS	AB.....
C	417	87-010-498-040	CAP,E 10-16 GAS	AB.....
C	418	87-010-498-040	CAP,E 10-16 GAS	AB.....
C	415	87-010-498-040	CAP,E 10-16 GAS	AB.....
C	414	87-010-498-040	CAP,E 10-16 GAS	AB.....
C	416	87-010-498-040	CAP,E 10-16 GAS	AB.....
C	410	87-010-498-040	CAP,E 10-16 GAS	AB.....
C	420	87-010-221-080	CAP,ELECT 470-10V	AB.....
C	423	87-010-494-040	CAP,E 1-50 GAS	AB.....
C	422	87-010-494-040	CAP,E 1-50 GAS	AB.....
C	421	87-010-494-040	CAP,E 1-50 GAS	AB.....
C	424	87-010-494-040	CAP,E 1-50 GAS	AB.....
C	429	87-010-498-040	CAP,E 10-16 GAS	AB.....
C	425	87-012-140-080	CAP 470P	AB.....
C	426	87-012-140-080	CAP 470P	AB.....
C	427	87-012-140-080	CAP 470P	AB.....
C	428	87-012-140-080	CAP 470P	AB.....
C	432	87-010-184-080	CHIP CAPACITOR 3300P(K)	AB.....
C	431	87-010-184-080	CHIP CAPACITOR 3300P(K)	AB.....
C	439	87-010-196-080	CHIP CAPACITOR,0.1-25	AB.....
C	433	87-010-198-080	CAP,CHIP 0.022	AB.....

# ELECTRICAL MAIN PARTS LIST - 3/4

C	434	87-010-198-080	CAP, CHIP 0.022	AB.....
C	430	87-010-498-040	CAP, E 10-16 GAS	AB.....
C	438	87-A11-177-080	C-CAP, S 0.15-16 K B	AB.....
C	437	87-A11-177-080	C-CAP, S 0.15-16 K B	AB.....
C	436	87-A11-177-080	C-CAP, S 0.15-16 K B	AB.....
C	435	87-A11-177-080	C-CAP, S 0.15-16 K B	AB.....
D	401	87-020-465-080	DIODE, 1SS133 (110MA)	AB.....
IC	401	8Z-KT1-622-010	C-IC, LC75374E	AB.....
Q	402	87-A30-279-040	C-TR, DTC314TK	AB.....
Q	401	87-A30-279-040	C-TR, DTC314TK	AB.....
Q	403	87-A30-279-040	C-TR, DTC314TK	AB.....
Q	404	87-A30-279-040	C-TR, DTC314TK	AB.....
C	558	87-010-178-080	CHIP CAP 1000P	AB.....
C	555	87-010-178-080	CHIP CAP 1000P	AB.....
C	557	87-010-178-080	CHIP CAP 1000P	AB.....
C	556	87-010-178-080	CHIP CAP 1000P	AB.....
C	551	87-010-494-040	CAP, E 1-50 GAS	AB.....
C	552	87-010-494-040	CAP, E 1-50 GAS	AB.....
C	553	87-010-494-040	CAP, E 1-50 GAS	AB.....
C	554	87-010-494-040	CAP, E 1-50 GAS	AB.....
C	559	87-010-498-040	CAP, E 10-16 GAS	AB.....
C	563	87-010-497-040	CAP, E 4.7-35 GAS	AB.....
IC	560	8Z-KC1-630-090	CAP, E 3300U-16 M 105 EX	AB.....
IC	551	87-A20-876-010	IC, HA13158	AB.....
		8Z-KC1-621-010	FUSE, 15A 32V	AB.....
C	855	87-010-178-080	CHIP CAP 1000P	AB.....
C	858	87-010-178-080	CHIP CAP 1000P	AB.....
C	856	87-010-178-080	CHIP CAP 1000P	AB.....
C	853	87-010-178-080	CHIP CAP 1000P	AB.....
C	859	87-010-178-080	CHIP CAP 1000P	AB.....
C	854	87-010-178-080	CHIP CAP 1000P	AB.....
C	857	87-010-178-080	CHIP CAP 1000P	AB.....
C	852	87-010-182-080	C-CAP, S 2200P-50 B	AB.....
C	851	87-010-197-080	CAP, CHIP 0.01 DM	AB.....
C	860	87-010-178-080	CHIP CAP 1000P	AB.....
C	866	87-010-194-080	CAP, CHIP 0.047	AB.....
C	867	87-010-237-080	CAP, ELECT 1000-16V	AB.....
C	864	87-010-498-040	CAP, E 10-16 GAS	AB.....
C	861	87-010-498-040	CAP, E 10-16 GAS	AB.....
C	862	87-010-498-040	CAP, E 10-16 GAS	AB.....
C	869	87-010-553-040	CAP, E 47-16 GAS	AB.....
C	868	87-010-553-040	CAP, E 47-16 GAS	AB.....
C	865	87-010-555-040	CAP, E 100-10 GAS	AB.....
C	873	87-010-182-080	C-CAP, S 2200P-50 B	AB.....
C	871	87-010-182-080	C-CAP, S 2200P-50 B	AB.....
D	855	87-017-932-080	ZENER, MTJ6.2B	AB.....
D	852	87-070-136-080	ZENER, MTZJ5.1B	AB.....
D	858	87-070-136-080	ZENER, MTZJ5.1B	AB.....
D	856	87-A40-189-080	DIODE, 1SR139-400	AB.....
D	853	87-A40-523-080	ZENER, MTZJ9.1B	AB.....
D	854	87-A40-624-080	ZENER, MTZJ10A	AB.....
D	857	87-A40-654-010	DIODE, DSA17C	AB.....
D	851	87-A40-654-010	DIODE, DSA17C	AB.....
D	861	87-A40-189-080	DIODE, 1SR139-400	AB.....
L	851	87-003-143-080	COIL 4.7 UH	AB.....
L	852	87-003-149-080	COIL, 47UH	AB.....
L	853	8Z-KT1-615-010	FLTR, AMORPHOUS -CHOKE	AB.....
Q	204	87-A30-298-010	TR, 2SD2396	AB.....
Q	854	87-026-235-080	CHIP-TR, DTC114EK	AB.....
Q	852	87-026-235-080	CHIP-TR, DTC114EK	AB.....
Q	858	87-A30-298-010	TR, 2SD2396	AB.....
Q	853	87-A30-299-080	TR, 2SB1326	AB.....
Q	851	87-A30-300-080	TR, 2SB1277	AB.....
Q	859	87-A30-301-080	TR, 2SD1862	AB.....
Q	855	87-A30-302-040	C-TR, 2SD1758-F5	AB.....
Q	860	87-A30-289-040	C-TR, 2SA1037AK(R)	AB.....
Q	861	89-324-122-080	TR, 2SC2412K	AB.....
CON	851	8Z-KT1-611-010	CONN, 16P CAM-B51	AB.....
J	101	8Z-KT1-614-010	ANT, AW-002	AB.....
J	751	88-KTA-604-010	JACK, PIN 4P V-TYPE	.....
J	751	88-KTA-605-010	JACK, PIN 2P V-TYPE	AB.....
		8Z-KCG-613-010	F-CABLE, 3P (AUX) 170MM	AB.....
C	803	87-010-178-080	CHIP CAP 1000P	AB.....
C	804	87-010-196-080	CHIP CAPACITOR, 0.1-25	.....
C	802	87-010-196-080	CHIP CAPACITOR, 0.1-25	AB.....
C	801	87-010-197-080	CAP, CHIP 0.01 DM	AB.....
D	802	87-020-585-080	CHIP-ZENER, 02CZ6.2Y	AB.....
D	809	87-020-585-080	CHIP-ZENER, 02CZ6.2Y	AB.....
D	801	87-020-585-080	CHIP-ZENER, 02CZ6.2Y	AB.....
D	807	87-020-585-080	CHIP-ZENER, 02CZ6.2Y	AB.....
D	808	87-020-585-080	CHIP-ZENER, 02CZ6.2Y	AB.....
D	805	87-020-585-080	CHIP-ZENER, 02CZ6.2Y	AB.....
D	804	87-020-585-080	CHIP-ZENER, 02CZ6.2Y	AB.....
D	806	87-020-585-080	CHIP-ZENER, 02CZ6.2Y	AB.....
D	803	87-020-585-080	CHIP-ZENER, 02CZ6.2Y	AB.....
D	811	87-020-585-080	CHIP-ZENER, 02CZ6.2Y	.....
IC	802	87-A90-951-010	RCR UNIT, SBX1971-52	.....
IC	801	88-KTD-602-010	C-IC, TC9297F	AB.....
J	451	87-A60-249-010	JACK, MOJ-B32	AB.....
LCD	801	8Z-KCG-605-010	LCD, ZKC-G	AB.....
PL	805	8Z-KT1-641-010	LAMP, T-3	AB.....
PL	807	8Z-KT1-641-010	LAMP, T-3	AB.....

# ELECTRICAL MAIN PARTS LIST - 4/4

PL	808	8Z-KT1-641-010	LAMP,T-3	AB.....
PL	803	8Z-KT1-641-010	LAMP,T-3	AB.....
PL	802	8Z-KT1-641-010	LAMP,T-3	AB.....
PL	801	8Z-KT1-641-010	LAMP,T-3	AB.....
PL	806	8Z-KT1-641-010	LAMP,T-3	AB.....
PL	804	8Z-KT1-641-010	LAMP,T-3	AB.....
SW	805	87-036-251-080	SW,T CT 6X3.5 160	AB.....
SW	806	87-036-251-080	SW,T CT 6X3.5 160	AB.....
SW	807	87-036-251-080	SW,T CT 6X3.5 160	AB.....
SW	802	87-036-251-080	SW,T CT 6X3.5 160	AB.....
SW	801	87-036-251-080	SW,T CT 6X3.5 160	AB.....
SW	808	87-036-251-080	SW,T CT 6X3.5 160	AB.....
SW	804	87-036-251-080	SW,T CT 6X3.5 160	AB.....
SW	803	87-A90-001-080	C-SW,TACT SKQMAL	AB.....
SW	809	87-A90-001-080	C-SW,TACT SKQMAL	AB.....
SW	812	87-036-251-080	SW,T CT 6X3.5 160	AB.....
SW	816	87-036-251-080	SW,T CT 6X3.5 160	AB.....
SW	817	87-036-251-080	SW,T CT 6X3.5 160	AB.....
SW	810	87-036-251-080	SW,T CT 6X3.5 160	AB.....
SW	813	87-036-251-080	SW,T CT 6X3.5 160	AB.....
SW	815	87-036-251-080	SW,T CT 6X3.5 160	AB.....
SW	811	87-036-251-080	SW,T CT 6X3.5 160	AB.....
SW	818	87-A90-001-080	C-SW,TACT SKQMAL	AB.....
SW	814	87-A90-001-080	C-SW,TACT SKQMAL	AB.....
SW	819	87-A90-001-080	C-SW,TACT SKQMAL	AB.....
SW	820	87-036-251-080	SW,T CT 6X3.5 160	AB.....
SW	821	87-A90-001-080	C-SW,TACT SKQMAL	AB.....

# MECHANICAL PARTS LIST - 1/1

NOTE: The characters in the suffix column indicate the part usage.

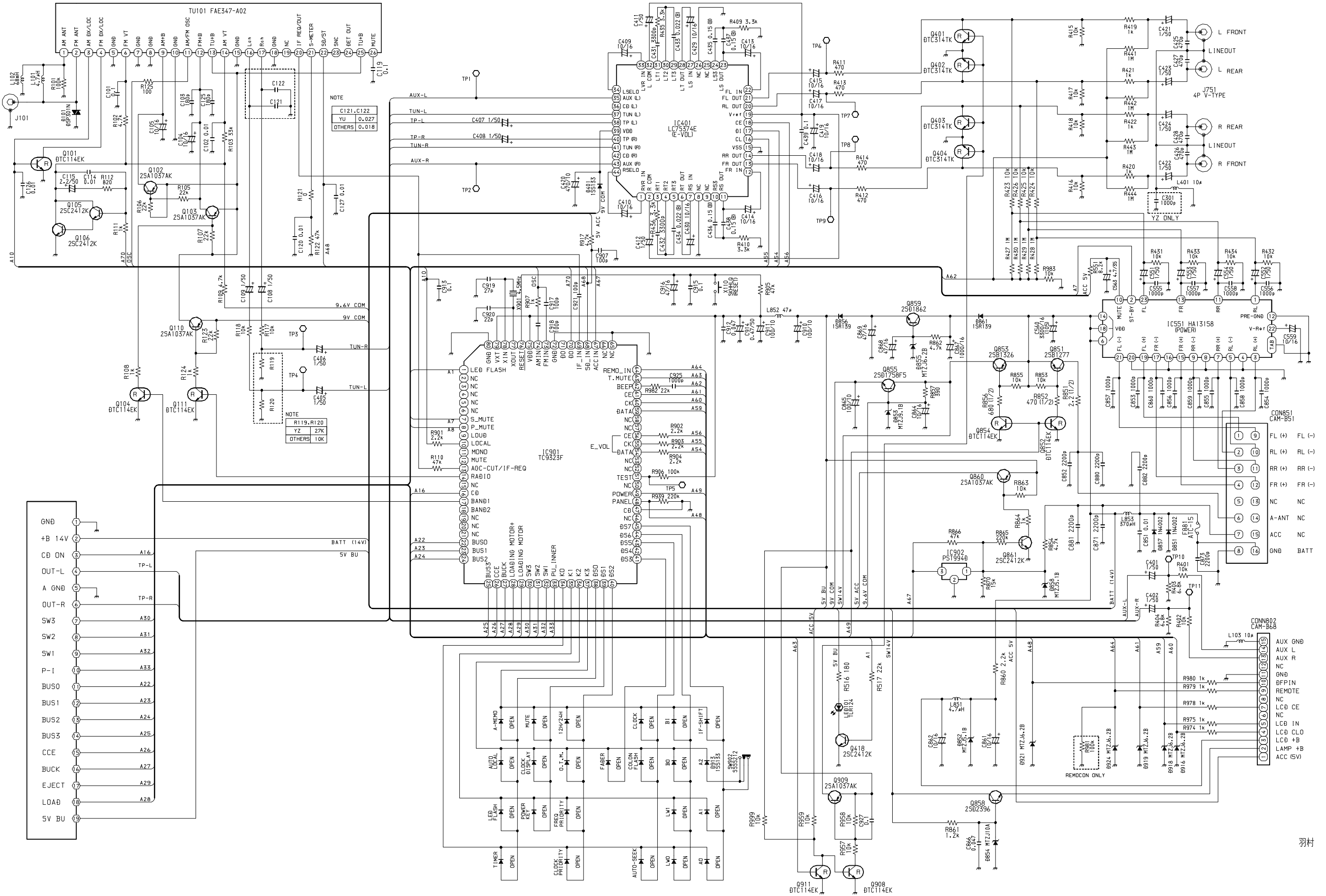
REF.NO	PARTS NO.	KANRI NO.	DESCRIPTION	SUFFIX
126YZ		XX		A
136YH		XX		B
8Z-KC2-002-110			CABI, REAR -C2	AB
8Z-KC2-011-010			CABI, BASE -C2	AB
8Z-KC2-012-010			CABI, TRIM -C2	AB
8Z-KC3-003-010			RING, OVAL T-C	AB
8Z-KCG-001-010			WINDOW, LCD NH -C16	
8Z-KCG-003-010			WINDOW, LCD X126	A
8Z-KCG-004-010			WINDOW, LCD X136 NIR	.B
8Z-KCG-005-010			WINDOW, LCD X1400	
8Z-KCG-006-010			WINDOW, LCD X1360	
8Z-KCG-020-110			CABI, FRONT-C16	AB
8Z-KC1-006-110			BTN, P.SET -C	AB
8Z-KC1-007-010			BTN, +/- -C	AB
8Z-KC1-008-010			BTN, SEL -C	AB
8Z-KC1-009-010			BTN, MUTE -C	AB
8Z-KC1-010-010			BTN, H-BASS -C	AB
8Z-KC1-011-110			BTN, U/D -C	AB
8Z-KC2-004-010			BTN, PWR -C2	AB
8Z-KC2-005-010			BTN, EJ -C2	AB
8Z-KC2-008-010			BTN, DETACH -C2	AB
8Z-KC5-019-010			BTN, M. INF -C	AB
8Z-KC5-020-110			HLDR, M. INF -C	AB
8Z-KCG-002-010			BTN, TETRA BADC -C	AB
8Z-KCG-007-010			BTN, T/M IN -C	AB
8Z-KC1-209-010			LENS, IR -C	A
8Z-KC1-211-010			COVER, TOP -C	AB
8Z-KC1-212-010			COVER, BOTTOM -C	AB
8Z-KC1-213-010			CHAS, SIDE L -C	AB
8Z-KC1-214-010			CHAS, SIDE R -C	AB
8Z-KC1-215-010			HLDR, P-IC -C	AB
8Z-KC1-219-010			HLDR, TR -C	AB
8Z-KC1-220-010			HLDR, JACK -C	
8Z-KC1-249-010			COVER, DUST F-C	AB
8Z-KC1-255-010			HLDR, TR -CA	AB
8Z-KC1-257-010			HLDR, ISO-WIRE -C	A
8Z-KC2-202-010			HLDR, LCD -C2	AB
8Z-KC2-203-110			LEVER, DFP HOOK -C2	AB
8Z-KC2-204-110			LEVER, DFP LOCK -C2	AB
8Z-KC2-205-010			PLATE, CD ENT.	AB
8Z-KC2-211-010			CASE, LCD LENS -C2	AB
8Z-KC2-212-010			LENS, LCD -C2	AB
8Z-KC2-213-110			LENS, L -C2	AB
8Z-KC2-214-110			LENS, R -C2	AB
8Z-KC2-217-010			HLDR, JACK -C2	AB
8Z-KC2-221-110			SPR-C, DETACH HOOK-C2	AB
8Z-KC2-222-010			SPR-T, DETACH LOCK-C2	AB
8Z-KC2-223-010			SPR-C, DETACH -C2	AB
8Z-KC3-201-010			COVER, CD BLIND -C	AB
8Z-KC7-201-010			COVER, ISO BLIND -C	AB
8Z-KT1-236-010			CAP, LAMP BLU	AB
8Z-KT1-237-010			CAP, LAMP GRN	AB
87-251-073-410			SCREW, U+2.6-6	AB
87-251-075-410			U+2.6-10	AB
87-251-096-410			U+3-10	AB
87-432-903-010			WASHER, WTE 2.6	AB
87-B10-216-010			U+2.6-4.0 ZINC BLK (BH M2.6)	AB
87-B10-259-010			UT2+3.0-10.0 W/O SLOT (BH TAP)	AB
8Z-KC1-251-010			S-SCREW, TH2.6-4.0-0.8	AB
8Z-KC1-254-010			S-SCREW, PT 2*5 BH+ BLK	AB
8Z-KC2-220-010			S-SCREW, PT 2*10 BH+ BLK	AB
8Z-KCG-613-010			F-CABLE, 3P (AUX) 170MM	AB

# ACCESSORIES / PACKAGE LIST - 1/1

NOTE: The characters in the suffix column indicate the part usage.

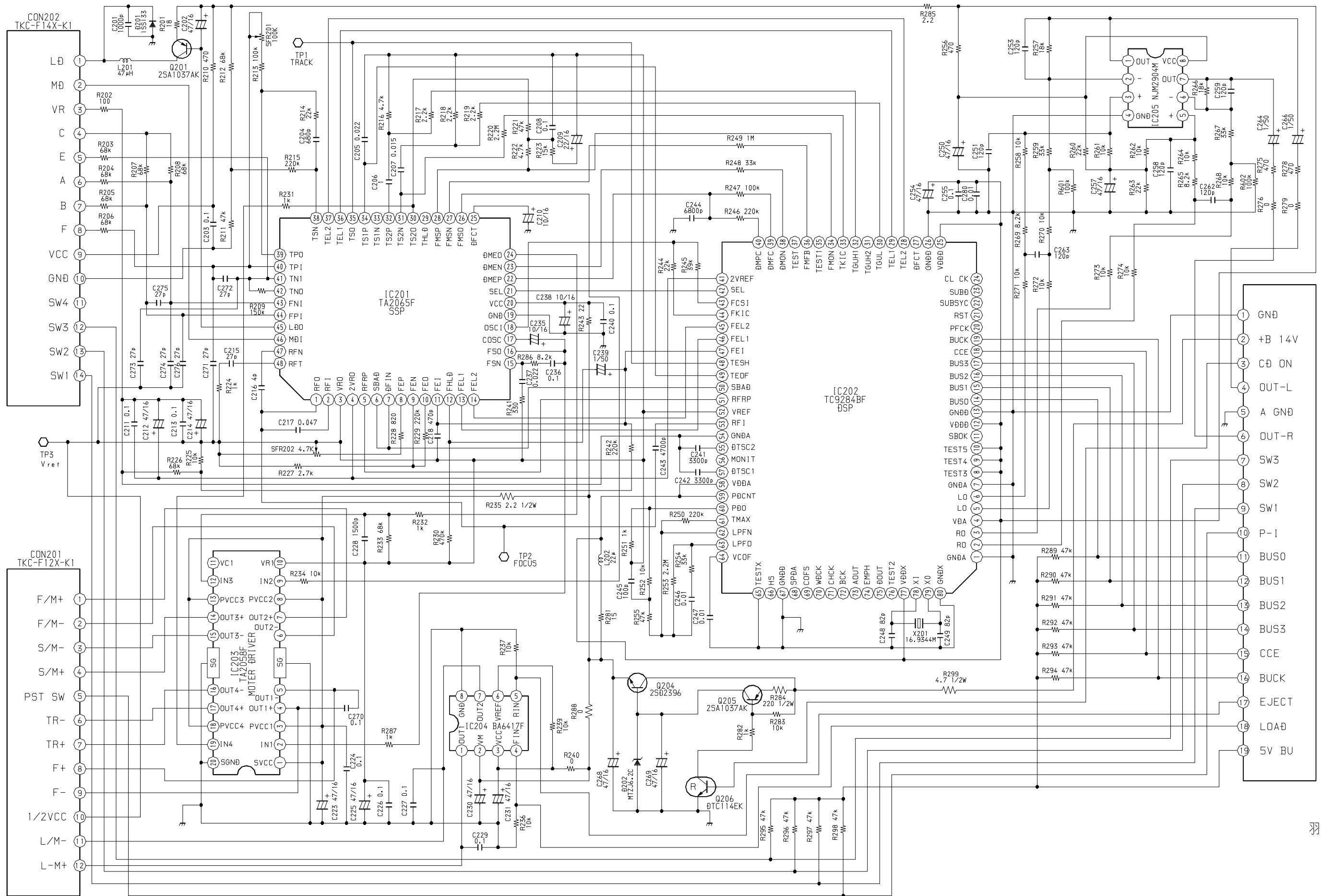
REF.NO	PARTS NO.	KANRI NO.	DESCRIPTION	SUFFIX
126YZ		XX		A
136YH		XX		B
8Z-KCG-901-110			IB, YU(3L) 116	
8Z-KCG-902-010			IB, INST, YU (3L)116	
8Z-KCG-903-110			IB, YU(3L) 136	
8Z-KCG-904-010			IB, INST, YU (3L)136	
8Z-KCG-905-110			IB, YL(3L) 1360/1400	
8Z-KCG-906-010			IB, INST, YL (3L)1360/1400	
8Z-KCG-907-010			IB, YZ(9L) 126	A
8Z-KCG-908-010			IB, INST, YZ (6L) 126	A
8Z-KCG-909-010			IB, INST, YZ (CZ-PO-H)126	A
8Z-KCG-910-010			IB, YH (E CK CH)136	.B
8Z-KCG-911-010			IB, INST, YH (E CK CH)136	.B
8Z-KY2-904-010			IB, Y(3L, GIP CK) CD1 -I	
87-B10-141-010			NUT, 5 TYPE-2	AB
87-B10-143-010			UT1+5-15 W/O SLOT	AB
87-B10-144-010			W, 5.2-10-0.5	AB
87-B10-145-010			W-SPR, 5.3-8.5-1.5	AB
87-B10-216-010			U+2.6-4.0 ZINC BLK (BH M2.6)	AB
8Z-KC1-030-010			CASE, DFP -C	AB
8Z-KC1-231-010			HLDR, HALF -C	AB
8Z-KC1-232-010			KEY, REMOVE -C	AB
8Z-KC1-235-010			HLDR, REAR MTG	AB
8Z-KC1-244-010			S-SCREW, 5*6 TH+ TAPPING ST	AB
8Z-KC1-250-010			S-SCREW, HEXAGON	AB
8Z-KC7-691-010			RC UNIT, CD1	
8Z-KT1-616-010			CONN ASSY, 16P B52	.B

SCHEMATIC DIAGRAM - 1 (MAIN)



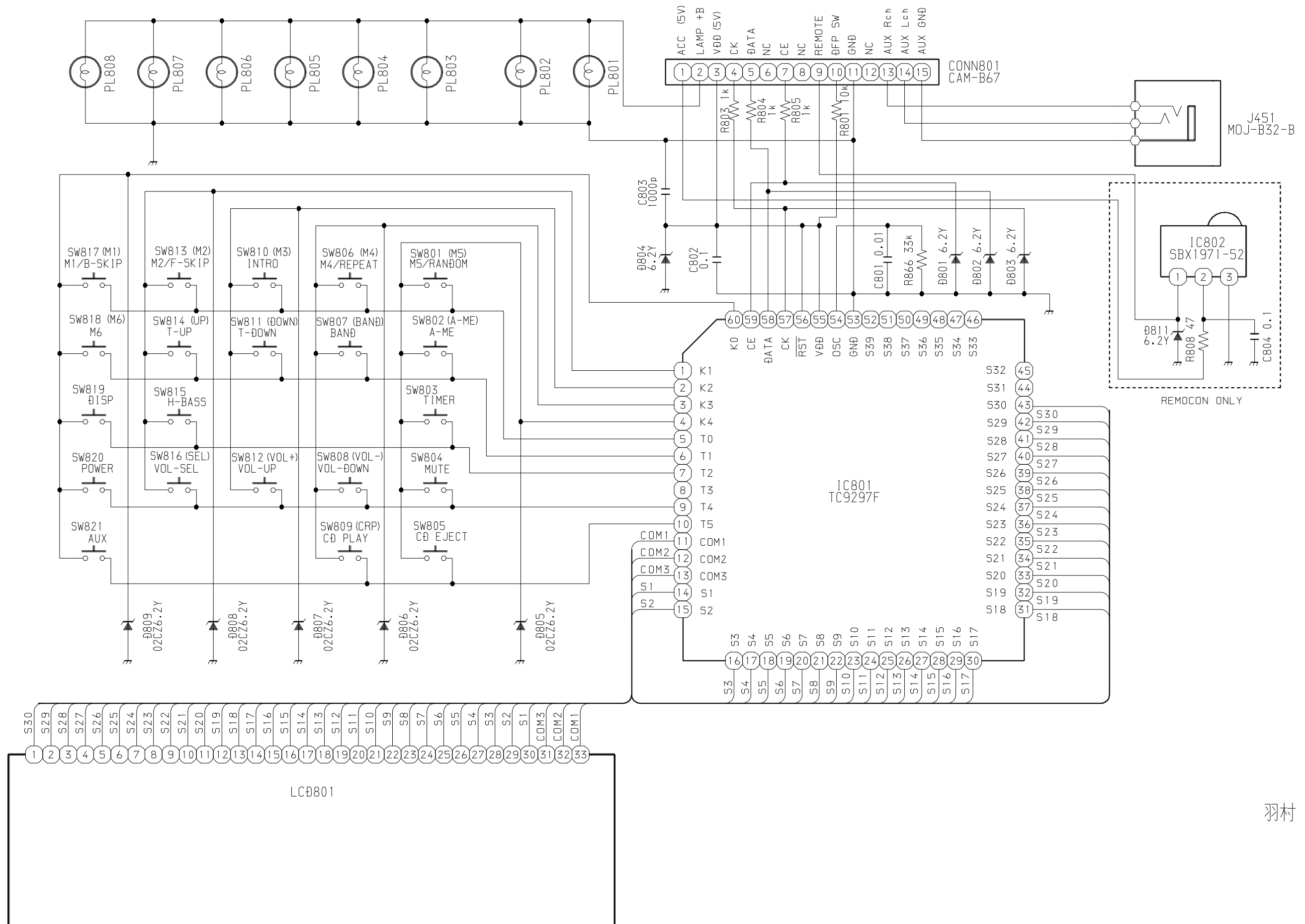


SCHEMATIC DIAGRAM - 2 (MAIN : CD SECTION)



羽村

SCHEMATIC DIAGRAM - 3 (FRONT)



羽村

サービス技術ニュース	
番号	連絡内容
G- -	
G- -	
G- -	

**アイワ株式会社**  
**AIWA CO.,LTD.**

9420025

Tokyo Japan

〒110-8710 東京都台東区池之端1-2-11 ☎03(3827)3111 (代表)

Printed in Singapore