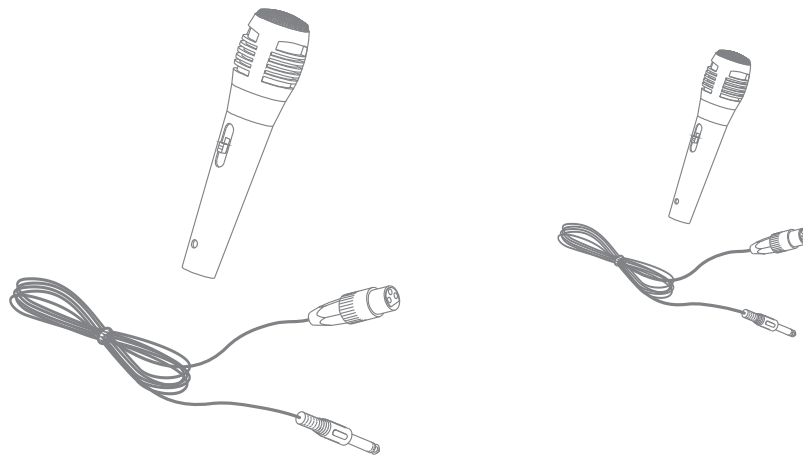
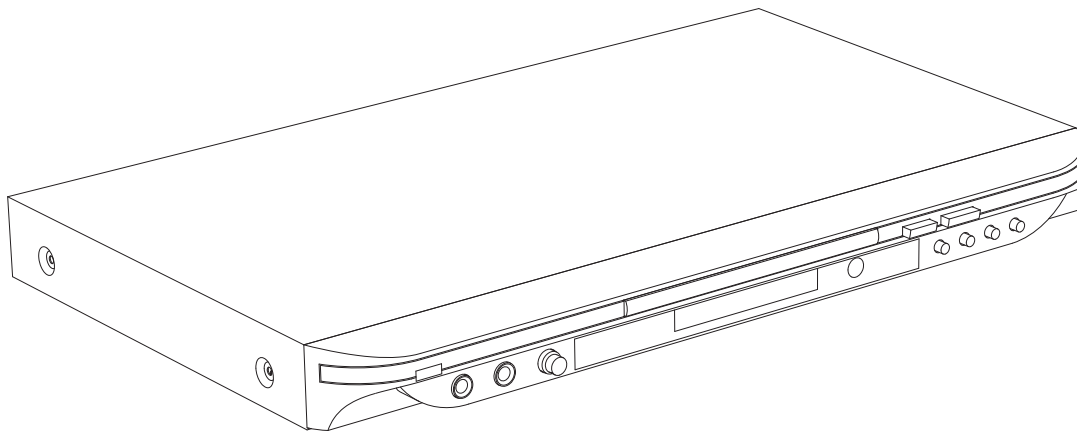


Manual de Serviço



**D
V
D

F
A
M
A

2**

0800 415300

Assistenciatecnica@britania.com.br

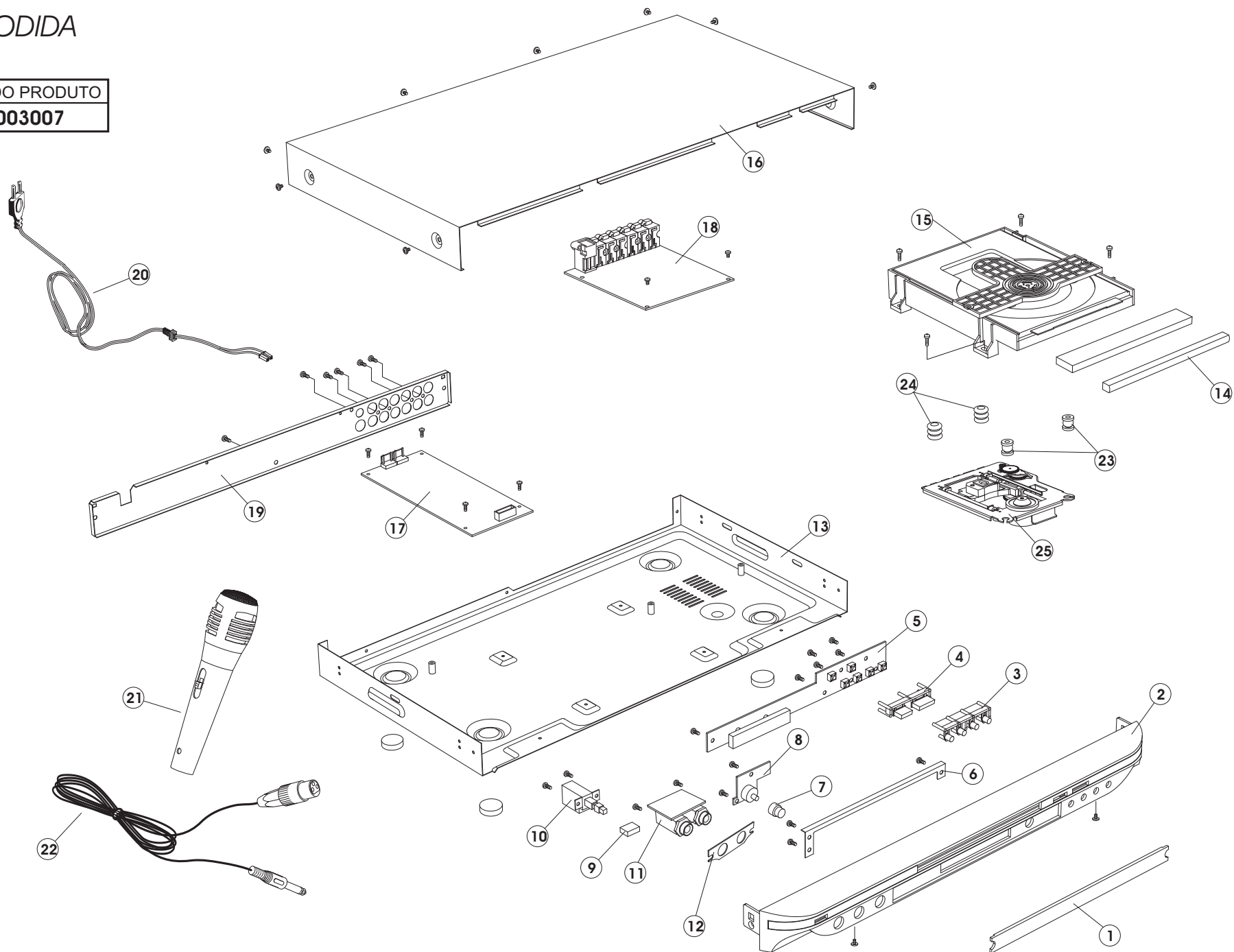
Política da Qualidade Britânia

“Oferecer produtos que contribuam para a satisfação de nossos clientes, buscando a melhoria contínua de nossos processos”

VISTA EXPLODIDA

CÓDIGO DO PRODUTO

067003007



ATENÇÃO!

ANTES DE REALIZAR QUALQUER PEDIDO DE PEÇA,
FAVOR VERIFICAR O NUMERO DE SERIE DO APARELHO
PARA ASSIM IDENTIFICAR A VERSÃO CORRETA.

VERSÃO	CHIP SET	PADRÃO N° SÉRIE
A		não existe para este modelo
B	SPHE 8200	N°. AA 000.000 V12B
C	SPHE 8202	N°. AA 000.000 V12C
D	SPHE 8200	N°. AA 000.000 V12D

ITENS DA VISTA EXPLODIDA

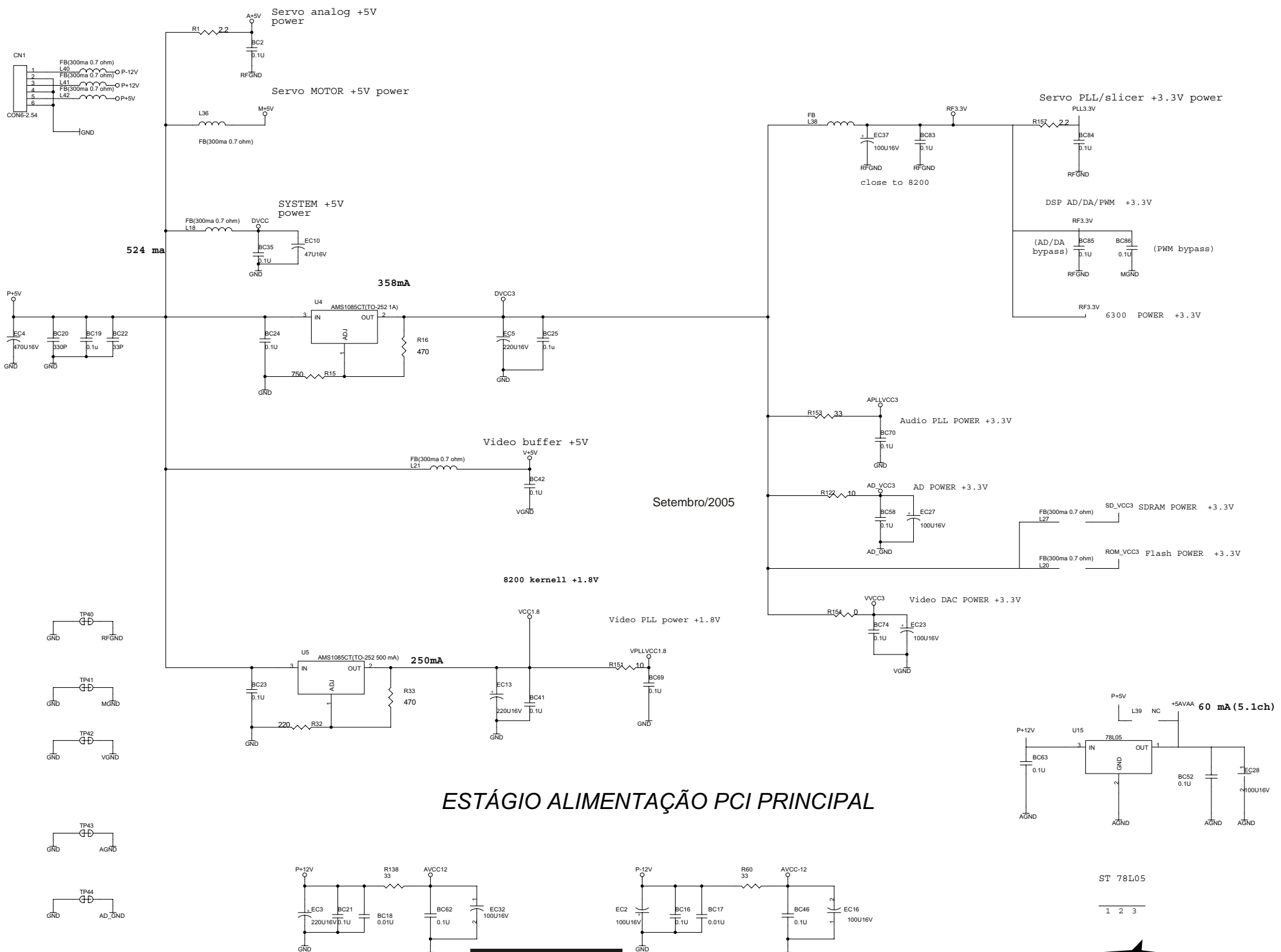
Código	Descrição peça	N°
704077	VISOR DISPLAY FAMA 2	1
704070	GAB FRONT FAMA 2 V.B (COM DTS)	2
704276	GAB FRONT FAMA 2 V.C.D (SEM DTS)	
704079	BOTAO STOP/SEARCH/FORWARD/L-R FAMA 2	3
704078	BOTAO PLAY/EJECT FAMA 2	4
704075	PCI DISPLAY FAMA 2	5
703356	REFORCO GAB FRONT FAMA	6
704073	KNOB MICROFONE FAMA 2	7
704511	PCI CONTROLE REMOTE FAMA 2	8
704076	BOTAO KNOB POWER	9
702070	CHAVE POWER DVD3600/PLUS	10
704074	PCI JACK MICROFONE FAMA 2	11
703363	SUORTE PCI JACK MICROFONE	12
704071	GAB INF FAMA 2 V.B	13
704272	GAB INF FAMA 2 V.C.D	
704072	PROTECAO GAVETA FAMA 2	14
703380	MEC S/ UNID OTICA FAMA/FAMA 2	15
703342	GAB SUP FAMA/FAMA 2 V.B	16
704270	GAB SUP FAMA 2 V.C.D	
704511	PCI FONTE FAMA 2	17
704255	PCI PRINC FAMA 2 V.B	18
704273	PCI PRINC FAMA 2 V.C	
704653	PCI PRINC FAMA 2 V.D	
704069	GAB TRAS FAMA 2 V.B	19
704271	GAB TRAS FAMA 2 V.C.D	
702063	CORD FORCA DVD	20
703347	MICROFONE FAMA	21
703348	CABO/PLUG MICROFONE FAMA	22
702038	AMORT FRONT FAMA 2	23
702037	AMORT TRAS FAMA 2	24
702069	UNID OTICA 512 GAME/FAMA/FAMA 2	25

DEMAIS COMPONENTES FORNCECIDOS

Código	Descrição	Localização
702065	CABO AUDIO E VIDEO	...
703419	CHICOTE 5 VIAS X 15CM DVD FAMA 2	
703418	CHICOTE 6 VIAS X 17CM DVD FAMA 2	
703417	CHICOTE 6 VIAS X 42CM DVD FAMA 2	
703372	CIRC. INT. HY57V161610ET-7	V.B U11,U12 / V.C U11 / V.D U22
704256	CIRC. INT. MEM EN29F040A-70PC - FAMA 2 V.B	U6
704277	CIRC. INT. MEM EN29F040A-70PC - FAMA 2 V.C	U14
704275	CIRC. INT. MEM EN29F040A-70PC - FAMA 2 V.D	U6
702300	CIRC. INT. SPHE 8200A	V.B U7 / V.D U7
704266	CIRC. INT. SPHE 8202S	U7
702079	CIRC. INT. SPHE 6300A	V.B U1 / V.D U1
704032	CIRC. INT. AM5668S	U4
703366	CIRC. INT. PCM1606E	V.B U17 / V.C U9 / V.D U17
702074	CIRC. INT. 24C02N	V.B U3 / V.C U5
701640	CIRC. INT. Ba5954	V.B U4 / V.D U4
702299	CIRC. INT. 1117	V.B U2, U14 / V.C U2, U3 / V.D U2, U14
701907	CIRC. INT. 4558	
704253	TRANSISTOR 2N3904	
700106	TRANSISTOR S8550	
700935	TRANSISTOR S9014	
701731	TRANSISTOR S8050	
704482	TRANSISTOR 78L95	
700322	TRANSISTOR S9015	
702076	CIRC. INT. F345 / KEW345 / VIPER-22A	Ic1
701633	CIRC. INT. EI817	Ic2
701632	CIRC. INT. TI431	Ic3
703374	CONTROLE REMOTO GAME/FAMA/FAMA 2	
703361	FLAT CABLE 24 VIAS 1,5CM X 15CM	
703435	EMBALAGEM	
703432	MANUAL USUARIO	

NOTA:

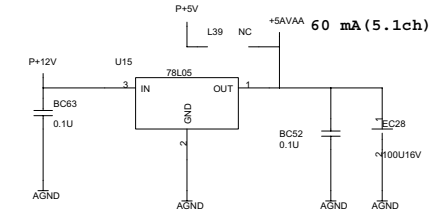
Dos itens da página anterior, somente aqueles que possuem
códigos relacionados nas tabelas serão fornecidos.



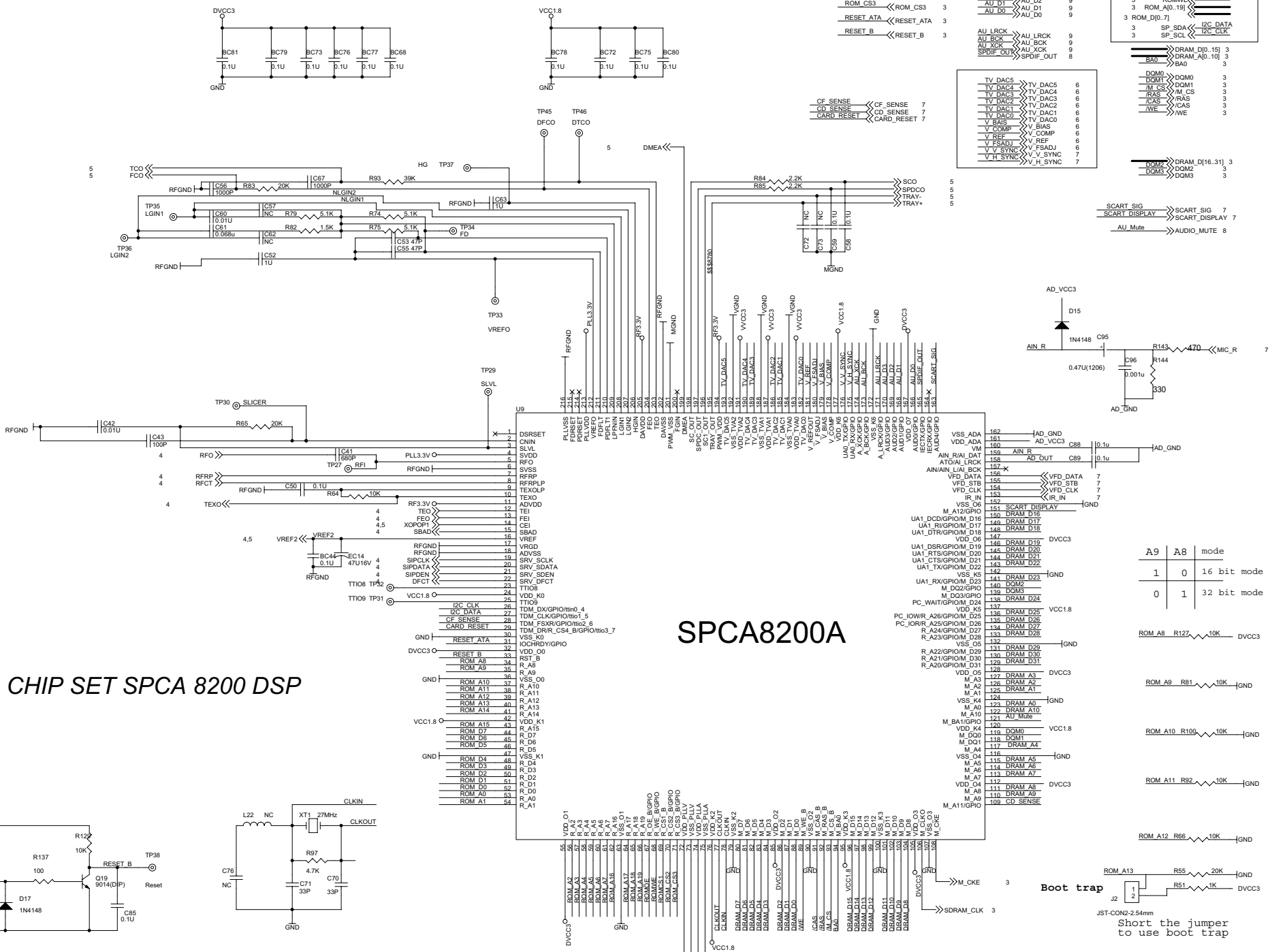
Setembro/2005

ESTÁGIO ALIMENTAÇÃO PCI PRINCIPAL

DVD FAMA 2



ST 78L05
1 2 3

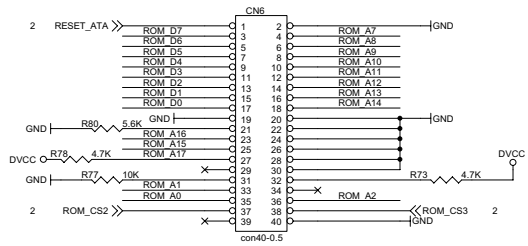
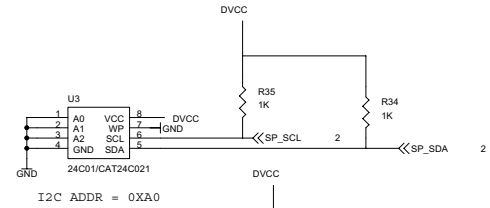
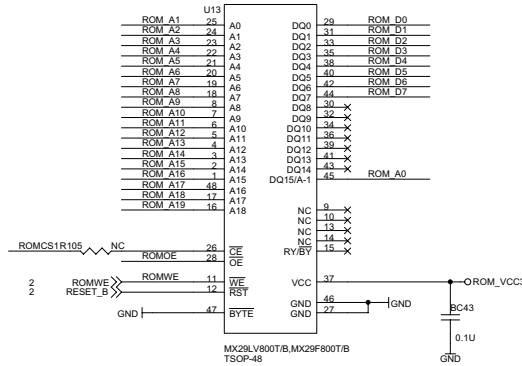
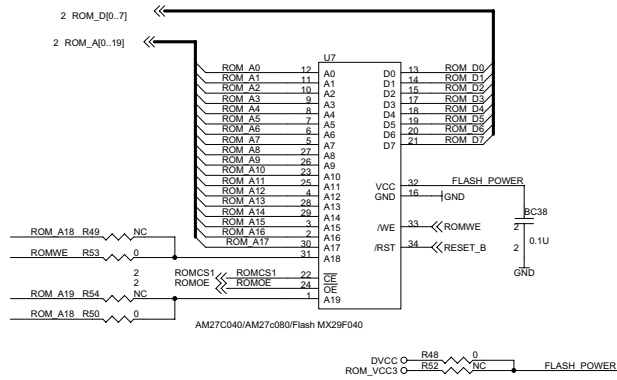


CHIP SET SPCA 8200 DSP

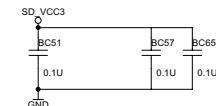
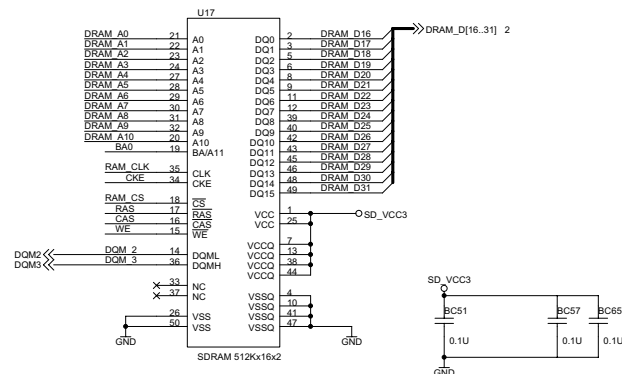
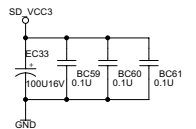
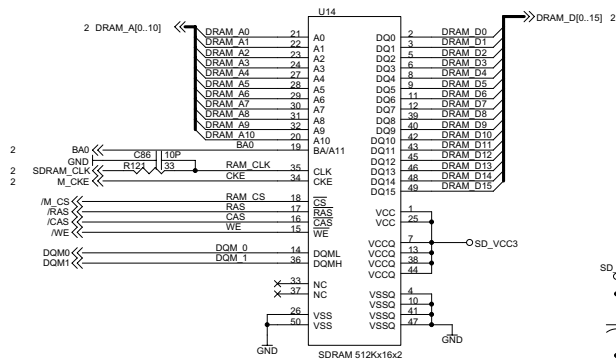
SPCA8200A

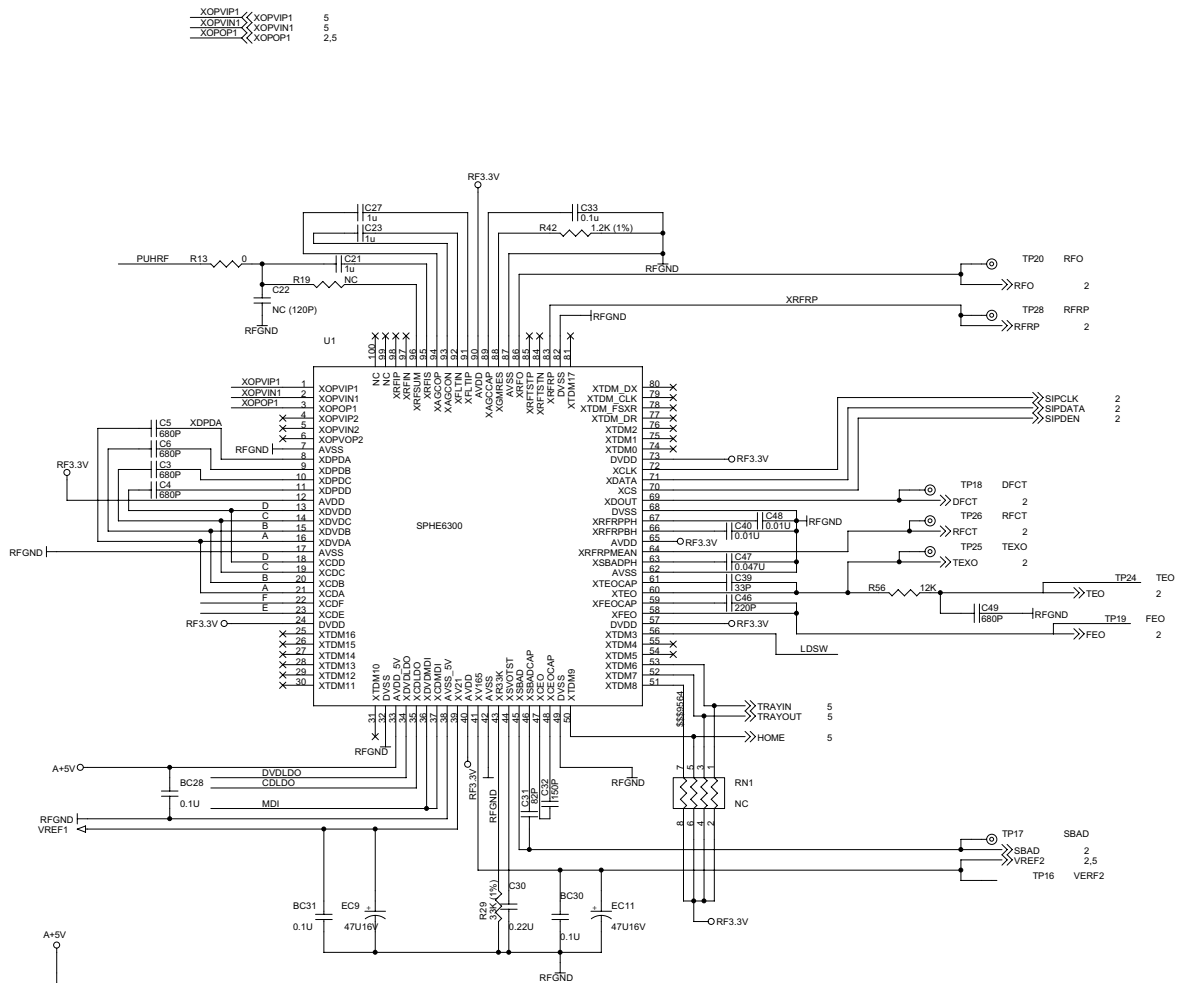
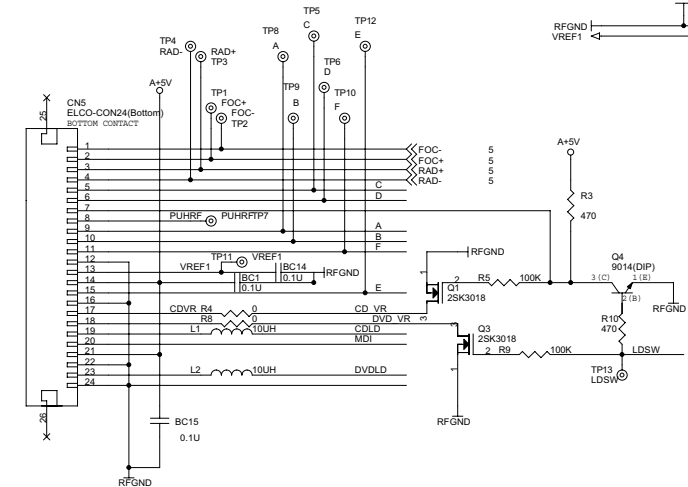
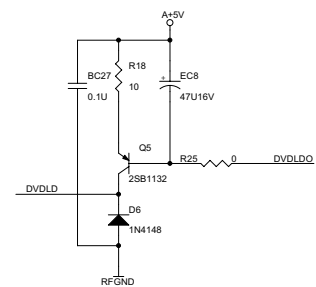
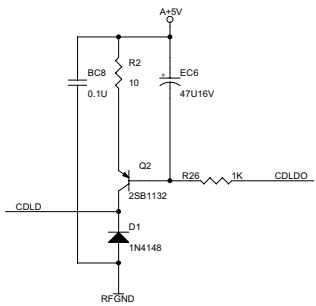
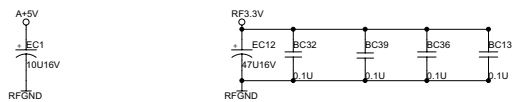
DVD FAMA 2

Boot trap
 J2
 Short the jumper to use boot trap



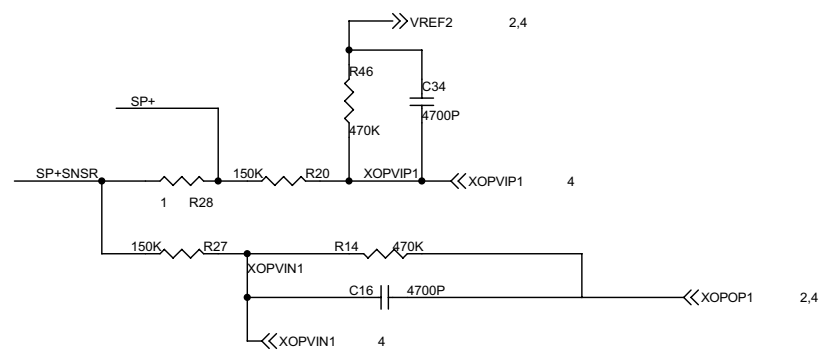
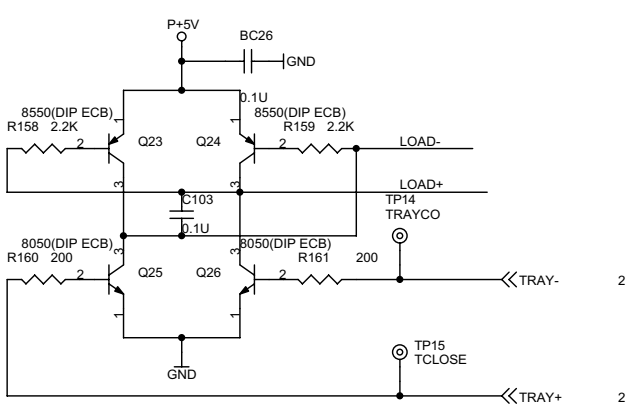
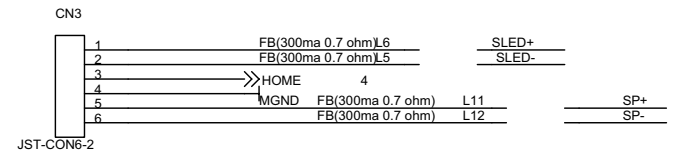
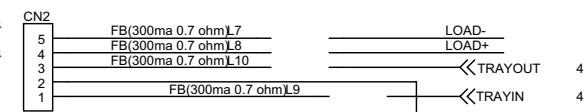
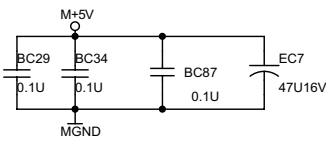
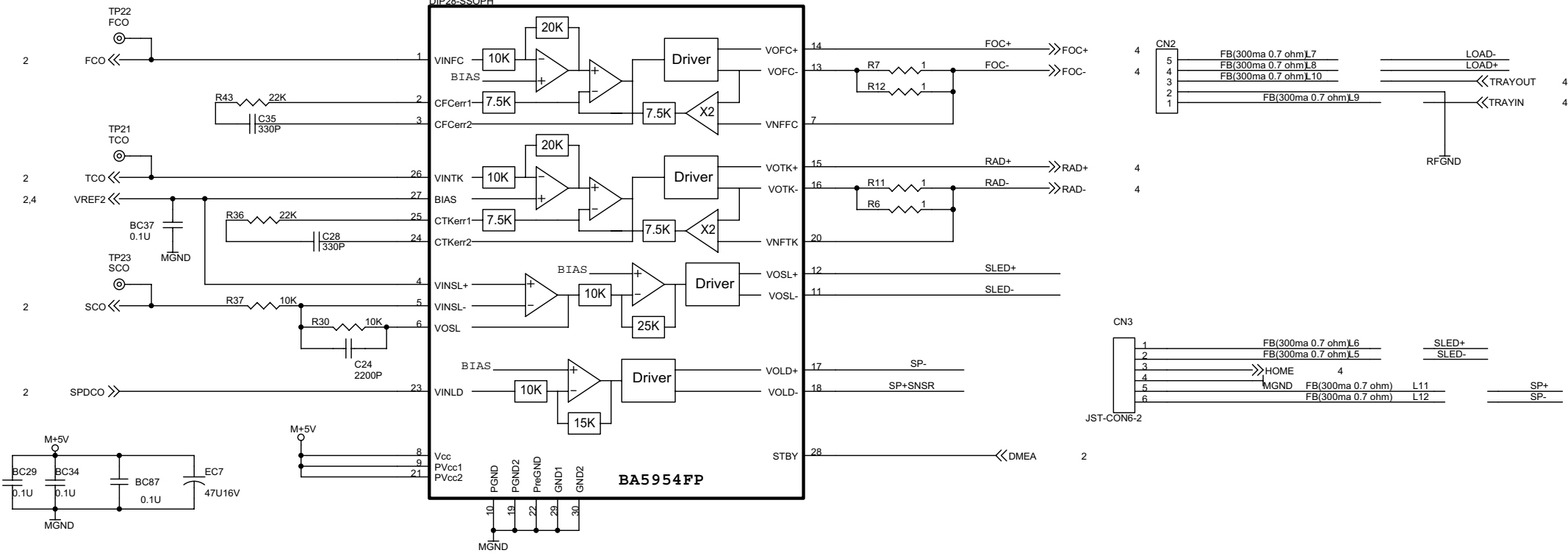
MEMÓRIAS FLASH E SDRAM





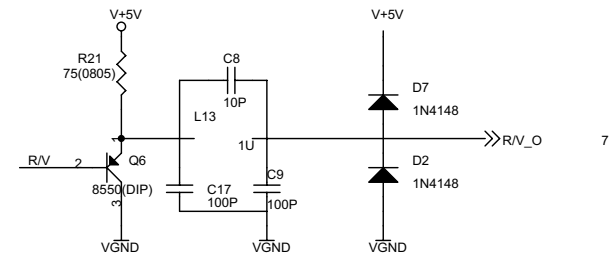
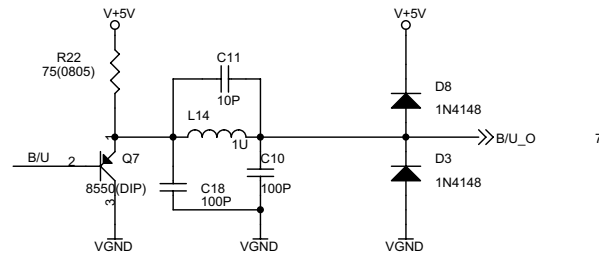
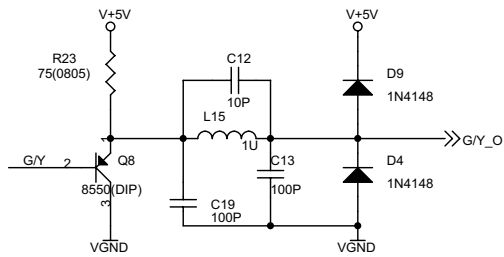
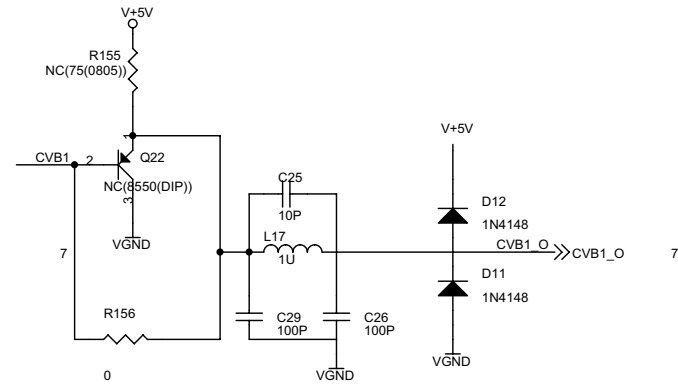
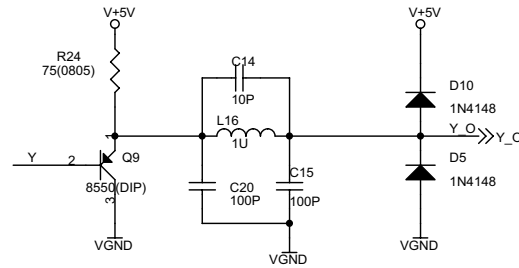
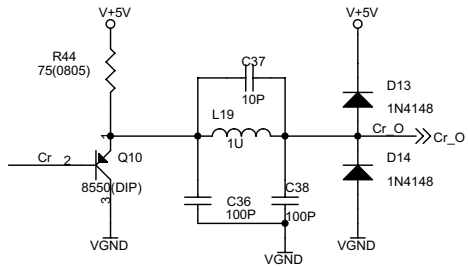
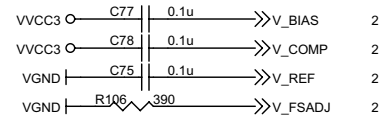
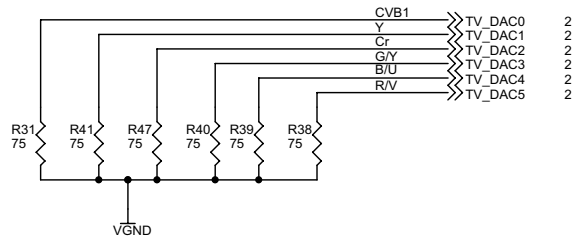
PRÉ-AMPLIFICADOR RF SPHE6300

U6
BA5954FP / CMD5954
DIP28-SSOPH

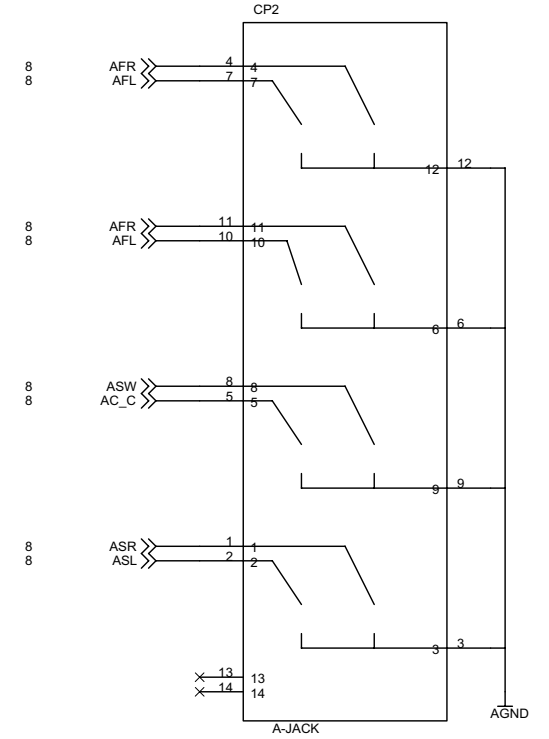
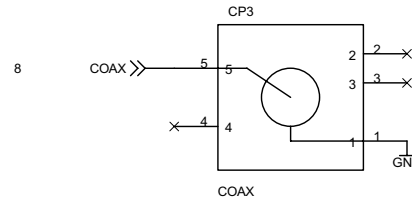
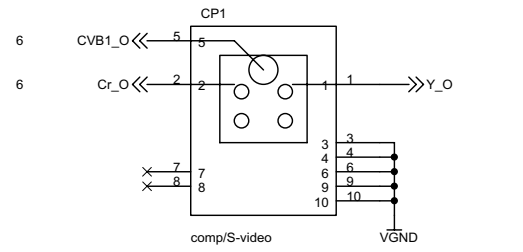
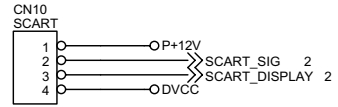
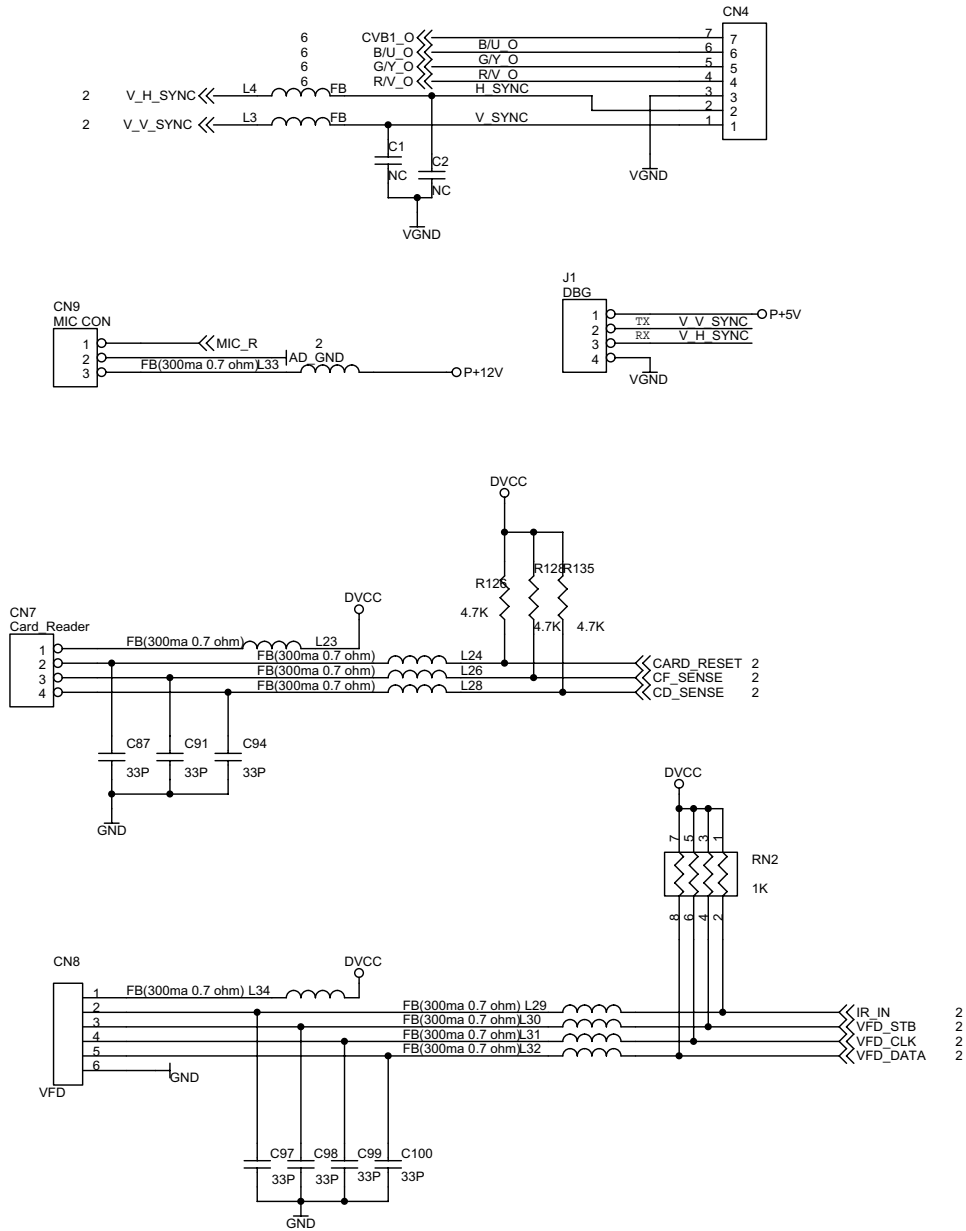


DRIVER MECANISMO E UNIDADE ÓTICA

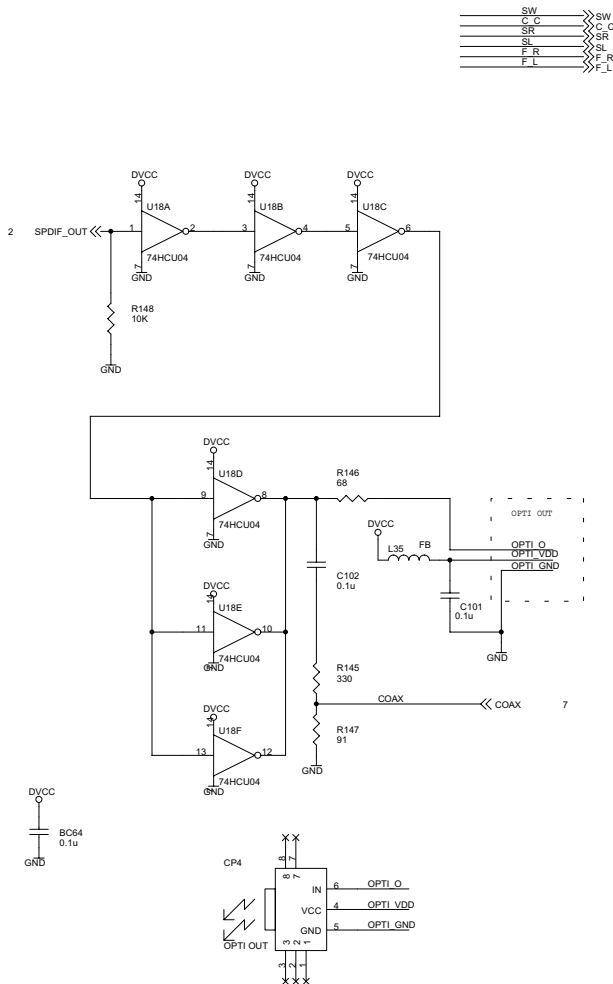
DVD FAMA 2



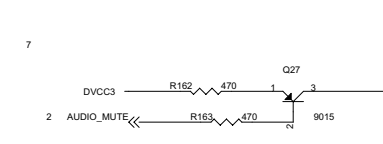
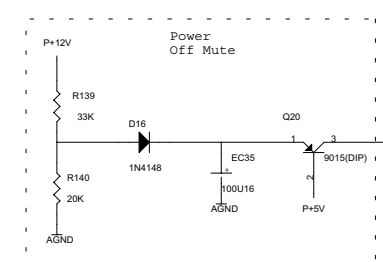
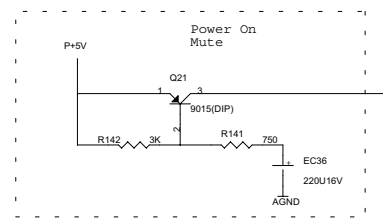
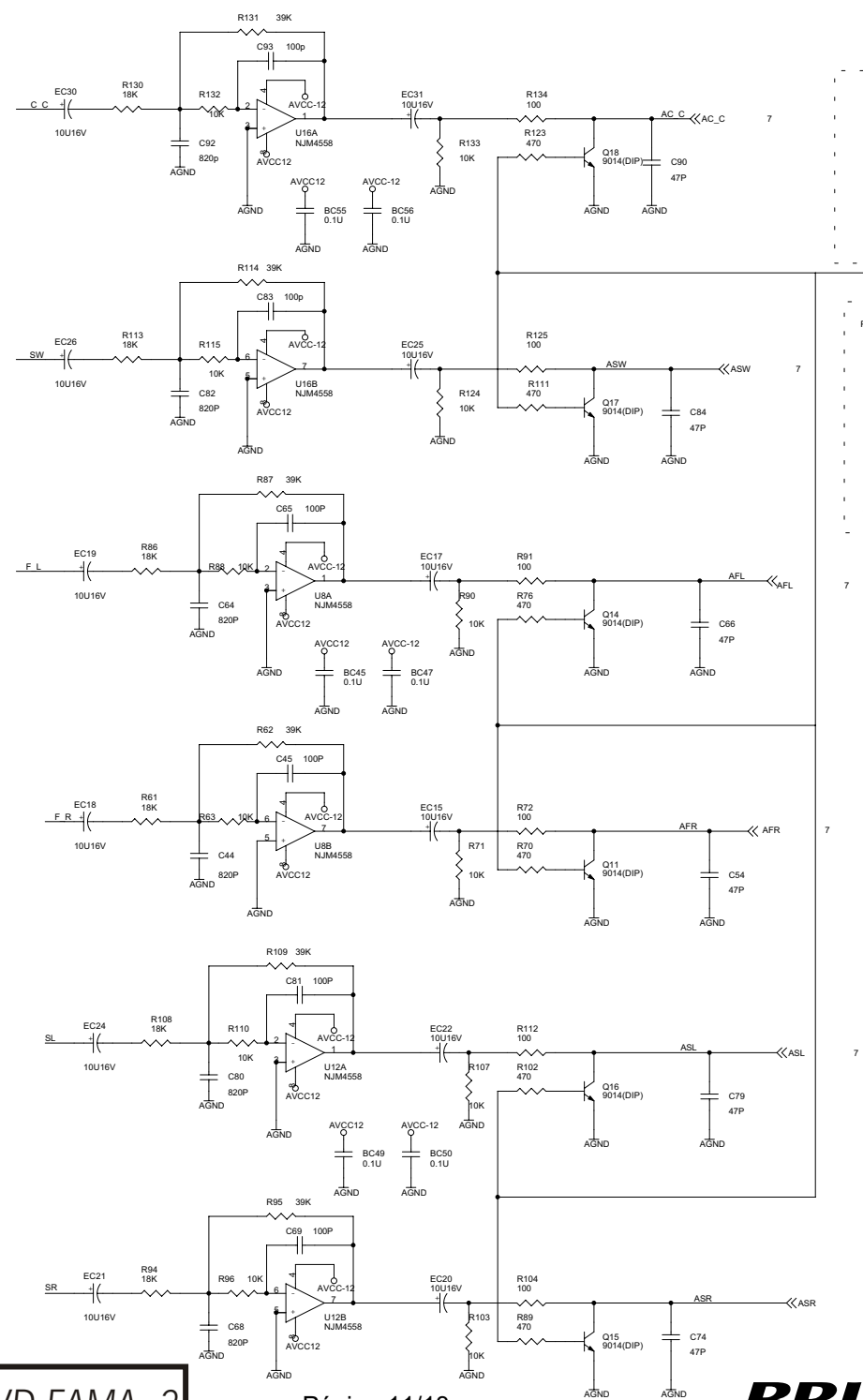
BUFFER SINAL DE VÍDEO

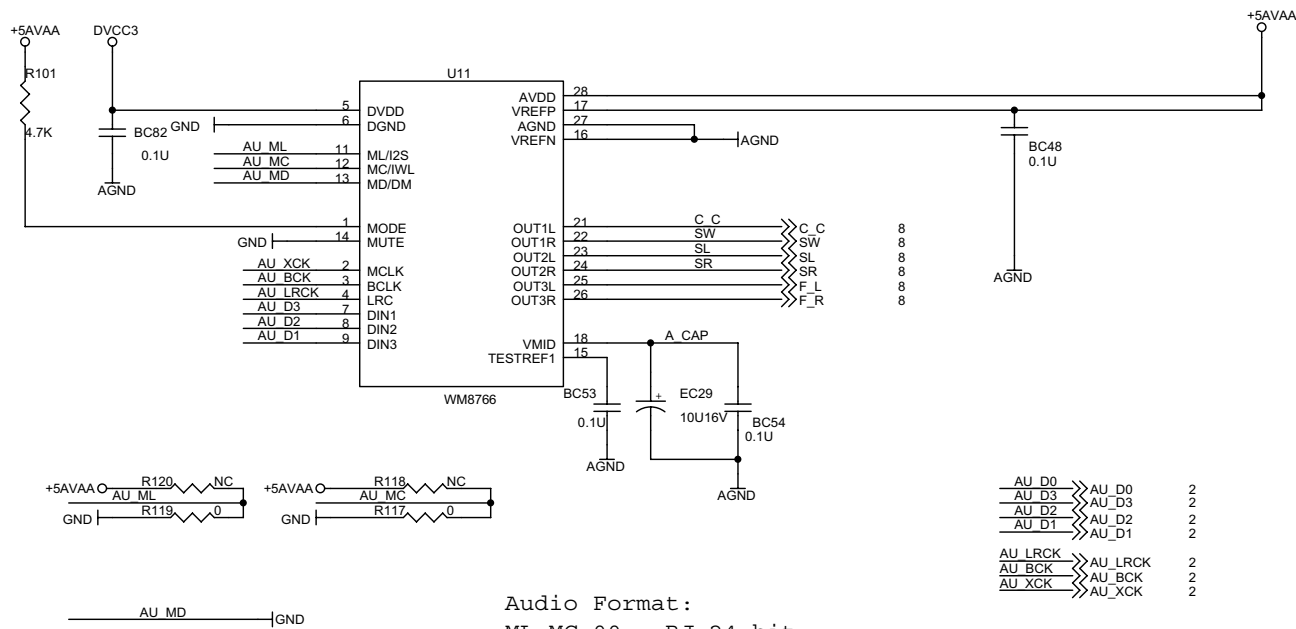


CONECTORES E PINOS



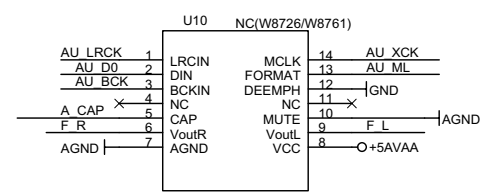
FILTROS DE ÁUDIO E MUTE





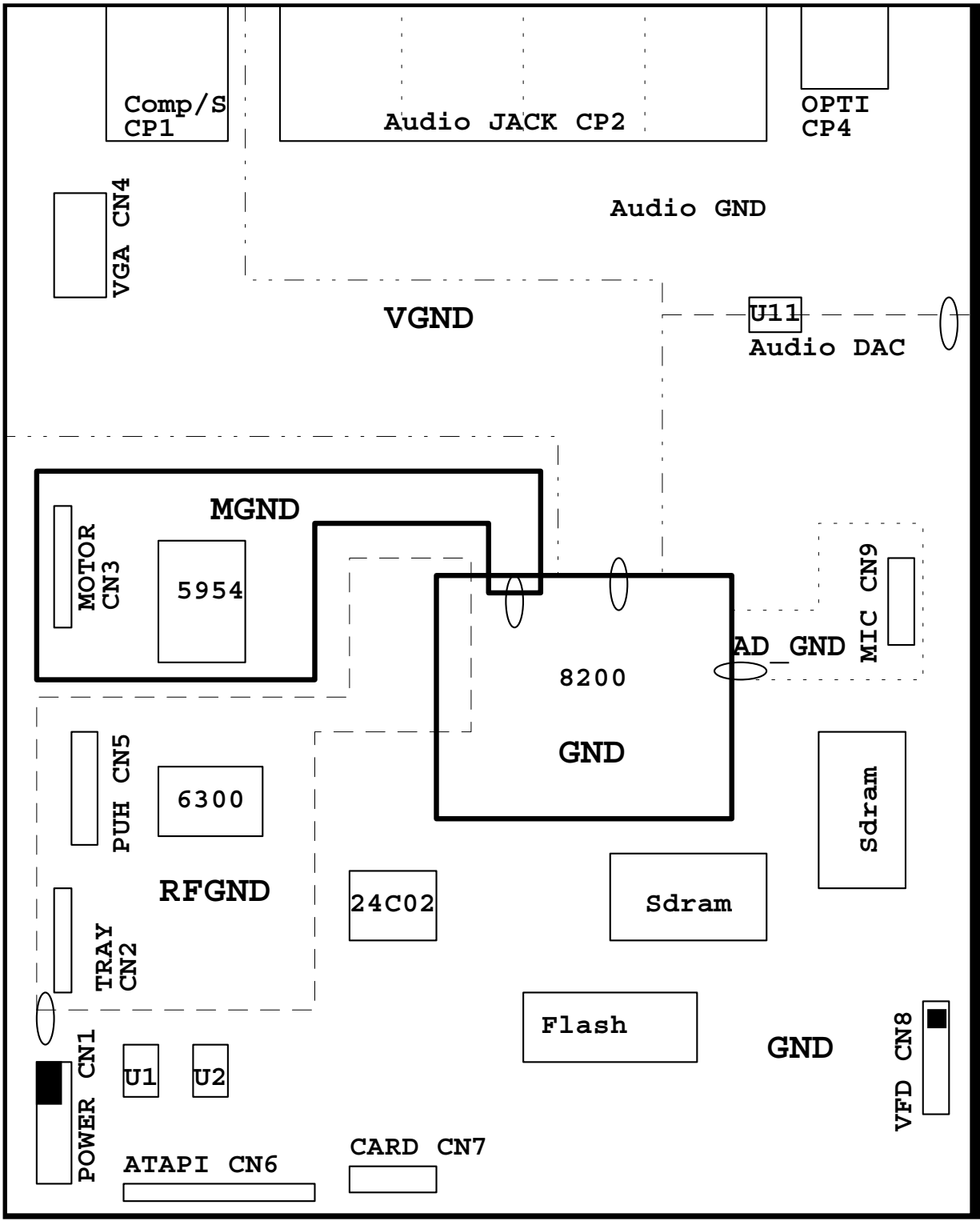
- AU_D0 >>> AU_D0 2
- AU_D3 >>> AU_D3 2
- AU_D2 >>> AU_D2 2
- AU_D1 >>> AU_D1 2
- AU_LRCK >>> AU_LRCK 2
- AU_BCK >>> AU_BCK 2
- AU_XCK >>> AU_XCK 2

AUDIO DAC



WM8726 Format Setting(AU_ML)
 0:16 bits, Right justified
 1:24 bits, I2S

WM8761 Format Setting(AU_ML)
 0:24 bits, Right justified
 1:24 bits, I2S



Audio Channel	Description
F_L	FRONT LEFT Channel
F_R	FRONT Right Channel
ASL	Surround Left Channel
ASR	Surround RIGHT Channel
AC_C	Center Channel
ASW	Sub-Woofer Channel
COAX	SPDIF COAX OUTPUT

Video Channel	Description
B/U_O	Video B or U output
G/Y_O	Video G or Y output
R/V_O	Video R or V output

LAYOUT PCI PRINCIPAL
EM DIAGRAMAS DE BLOCOS