



website:<http://biz.LGservice.com>
e-mail:<http://www.LGservice.com/techsup.html>

PLASMA TV

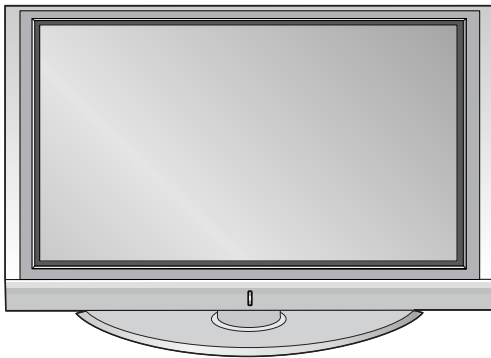
MANUAL DE SERVICIO

CHASIS : PN-61A

MODELO : 42PC1RVH 42PC1RVH-MJ
42PC1RV 42PC1RV-MJ

ATENCIÓN

Antes de dar servicio al chasis, lea las PRECAUCIONES DE SEGURIDAD en este manual.



CONTENIDO

CONTENIDO	2
PRECAUCIONES DE SEGURIDAD	3
INSTRUCCIONES DE AJUSTE	4
GUÍA PARA SOLUCIONES DE PROBLEMAS.....	14
TABLERO DE CIRCUITO IMPRESO	21
DIAGRAMA EN BLOQUE	24
VISTA EN DESPIECE	26
LISTA DE VISTA EN DESPIECE.....	27
LISTA DE PARTES DE REPUESTO	28
DIAGRAMA ESQUEMÁTICO	

PRECAUCIONES DE SEGURIDAD

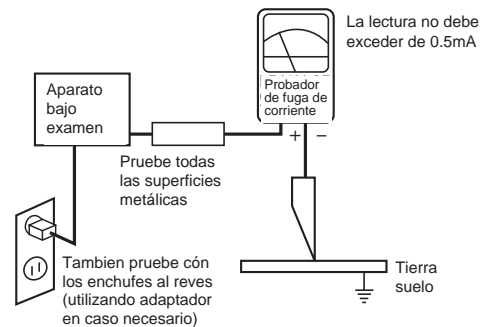
ADVERTENCIA: Antes de dar servicio a este chasis, lea "PRECAUCIONES RESPECTO A RADIACION POR RAYOS X", "INSTRUCCIONES DE SEGURIDAD" y "AVISO SOBRE SEGURIDAD DE PRODUCTOS"

INSTRUCCIONES DE SEGURIDAD

1. Cuando el receptor está en operación, se producen voltajes potencialmente tan altos como 25,000-29,000 voltios. Operar el receptor fuera de su gabinete o con la tapa trasera removida puede causar peligro de choque eléctrico.
 - (1) Nadie debe intentar dar servicio si no está debidamente familiarizado con las precauciones que son necesarias cuando se trabaja con un equipo de alto voltaje.
 - (2) Siempre descargue el ánodo del tubo de la imagen a tierra para evitar el riesgo de choque eléctrico antes de remover la tapa del ánodo.
 - (3) Descargue completamente el alto potencial del tubo de imagen antes de manipularlo. El tubo de la imagen es de alto vacío y, si se rompe, los fragmentos de vidrio salen despedidos violentamente.
2. Si se quemara algún fusible de este receptor de televisión, reemplácelo con otro especificado en la lista de partes.
3. Cuando reemplace tableros o plaquetas de circuitos, cuidadosamente enrolle sus alambres alrededor de las terminales antes de soldar.
4. Cuando reemplace un resistencia de vataje (resistor de película de óxido metálico) en el Tablero o Plaqueta de circuitos, mantenga la resistencia a un mínimo de 10mm de distancia.
5. Mantenga los alambres lejos de componentes de alto voltaje o de alta temperatura.
6. Este receptor de televisión debe conectarse a una fuente de 100 a 240 V AC.
7. Antes de devolver este aparato al cliente, haga una verificación de fuga de corriente sobre las partes metálicas del gabinete expuestas, tales como antenas, terminales, cabezas de tornillos, tapas de metal, palancas de control etc., para estar seguro de que el equipo funciona sin peligro de choque eléctrico. Enchufe el cordón directamente al tomacorriente de la línea de AC 100-240V.

No utilice una línea aislada de transformador durante esta verificación. Use un voltímetro de 1000 Ohmios por voltio de sensibilidad o más, en la forma que se describe a continuación.

Cuando la unidad está ya conectada a la AC, pulse el conmutador primero poniéndolo en "ON" (encendiendo) y luego en "OFF" (apagando), mida desde un punto de tierra conocido, tal como una (cañería de metal, una manija metálica, una tubería etc.) a todas las partes metálicas expuestas del receptor de televisión (antenas, manijas de metal, gabinetes de metal, cubiertas de metal, palancas de control etc..) especialmente cualquiera de las partes metálicas expuestas que puedan ofrecer un camino hacia el chasis. Ninguna medición de corriente eléctrica debe exceder de 0.5 miliamperios. Repita la prueba cambiando la posición del enchufe en el tomacorriente. Cualquier medición que no esté dentro de los límites especificados aquí representan un riesgo potencial de choque eléctrico que debe ser eliminado antes de devolver el equipo al cliente.



AVISO SOBRE SEGURIDAD DE PRODUCTOS

Muchas de las partes, eléctricas y mecánicas en este chasis tienen características relacionadas con la seguridad. Estas características frecuentemente pasan desapercibidas en las inspecciones visuales y la protección que proporcionan contra la RADIACION DE RAYOS-X no siempre necesariamente se obtiene al mismo grado cuando se reemplazan piezas o componentes diseñados para voltajes o vatajes mayores, etc. Las piezas que tienen estas características de seguridad se identifican por la marca Δ impresa sobre el diagrama esquemático y la marca \downarrow impresa en la lista de partes. Antes de reemplazar alguno de esos componente, lea cuidadosamente la lista de este manual. El uso de partes de reemplazo que no tengan las mismas características de seguridad, como se especifica en la lista de partes, puede crear Radiación de Rayos-X.

INSTRUCCIONES DE AJUSTE

1. Rango de Aplicación

Estas especificaciones se aplican a todos los TV PDP de 42" con chasis PN61A.

2. Especificaciones

- (1) Debido a que éste no es un chasis caliente, no es necesario usar un transformador aislado. Sin embargo, el uso de un transformador aislado ayudará a proteger el instrumento de prueba.
- (2) El ajuste debe hacerse en el orden correcto.
- (3) El ajuste debe efectuarse dada la circunstancia de $25\pm 5^{\circ}\text{C}$ de temperatura y $65\pm 10\%$ de humedad relativa si no existe otra designación específica.
- (4) El voltaje de entrada del receptor debe mantener 100~240V, 50/60Hz.
- (5) El receptor debe ser operado por cerca de 15 minutos antes del ajuste.

- Después de recibir el Blanco Completo RGB en el Modo HEAT-RUN, el receptor debe ser operado antes del ajuste.
- Entre al MODO HEAT-RUN
 - (1) Presione la TECLA POWER ON en el C/R para ajuste.
 - (2) Se despliega el OSD y la pantalla despliega el 100% del PATRÓN COMPLETO DE BLANCO.
- * La unidad es activada en HEAT-RUN sin generador de señal en este modo.
- * Se usa el patrón de color único (ROJO /AZUL / VERDE) del MODO HEAT RUN para verificar el panel.

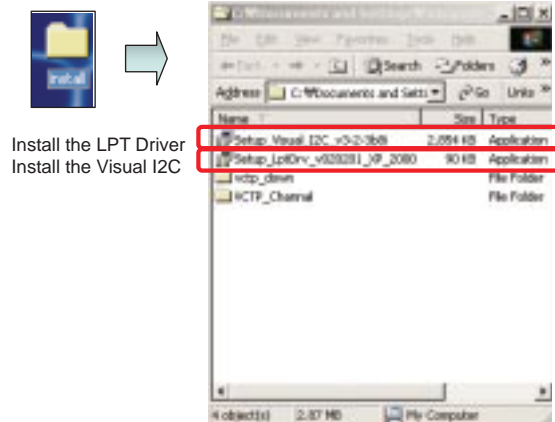
(Precaución) Si enciende una pantalla fija por más de 20 minutos(Especialmente patrón digital, patrón o cross hatch), puede presentarse una imagen diferida en la parte del nivel negro de la pantalla.

3. Instalación del Programa de Descarga

(1) Extraer un archivo Zip



(2) Instalación del Controlador Visual I2C y LPT

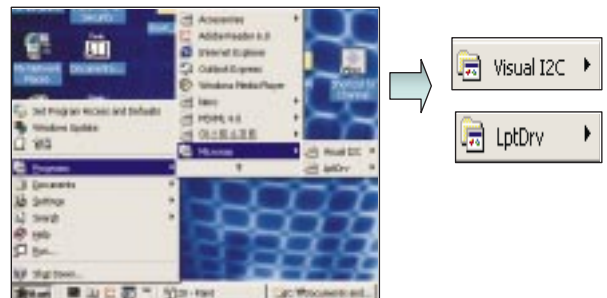


Install the LPT Driver
Install the Visual I2C

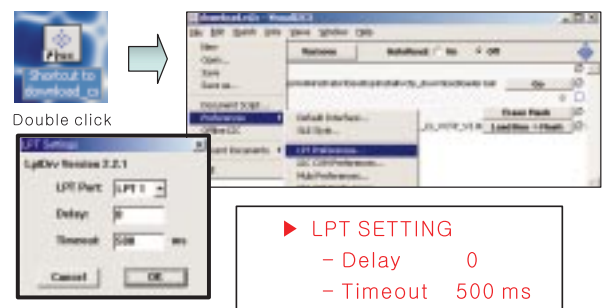
LPT Port Driver (LptDrv) Setups : Program Files>Micronas>Visual I2C>Port_Driver

- ▶ Use for Windows 95/98 : Setup_LptDrv_v0104_9x.exe
- ▶ Use for Windows 2000/XP : Setup_LptDrv_v0202_XP_2000.exe
- ▶ Use for Windows NT : Setup_LptDrv_v0104_NT.exe

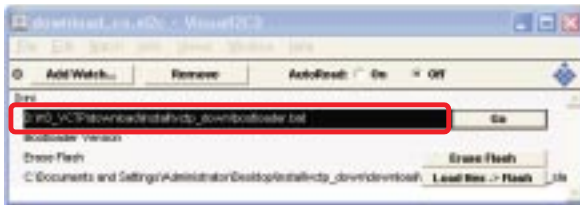
(3) Verificación (Start>Programs>Micronas>Visual I2C o LptDrv)



(4) Configuración del retardo LPT (File>Preference>LPT preferences..)



(5) Intercambie el archivo bootloader.bat



► Haga doble clic en el área Roja




► Haga doble clic en el área Roja



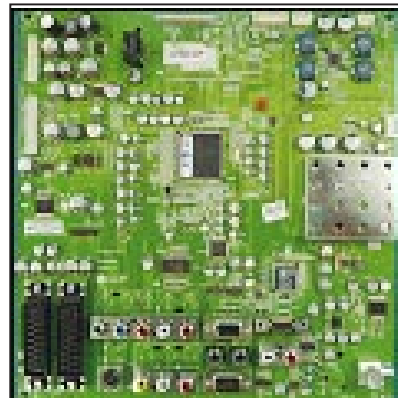
- Seleccione el archivo "bootloader.bat"(install>VCTP_download>bootloader)
- Presione "OK"



- Finalice el programa, después de guardar el archivo "download_cs.vi2c" (si hace clic en , el mensaje aparece automáticamente)

4. Descarga del Programa S/W

4-1. Método 1 de Descarga(Montaje del PCB)



- (1) Conecte el jig de descarga al conector sub-D.
- (2) Ejecute el programa 'Download.vi2c' en la PC, luego una ventana principal se abrirá.



Haga doble clic



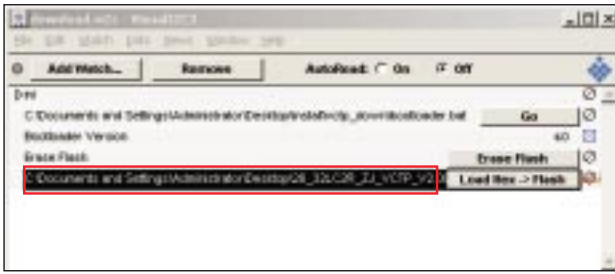
- (3) Haga doble clic en la casilla azul y confirme "Bootloader Version" como 40.



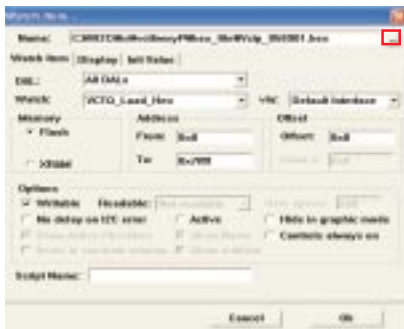
- (4) Haga clic en el botón "Erase Flash".



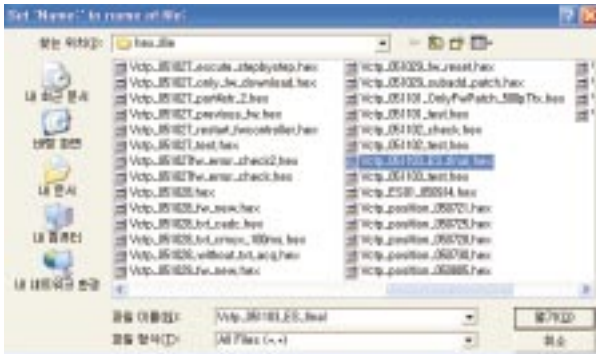
(5) Haga doble clic en el programa de descarga inferior, luego "edit window" se abrirá.



(6) Haga clic en el botón de opción en "edit window", luego "file choice window" se abrirá.



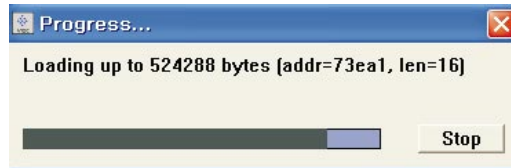
(7) Elija el archivo Hex en la carpeta y ejecute la descarga haciendo clic en el botón "open".



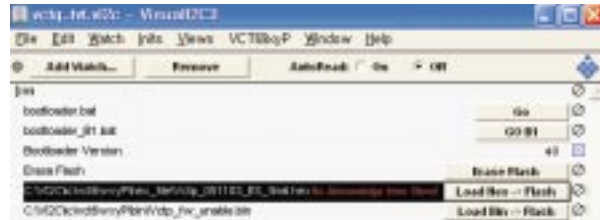
(8) Haga clic en el botón OK en "edit window".



(9) Proceso de Descarga



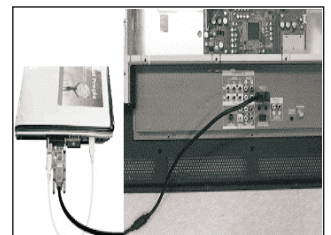
(10) Si la descarga falla, por ejemplo "No acknowledge from slave". Ejecute la descarga nuevamente desde el punto (1).



4-2. Método 2 de Descarga(Montaje del Plato AV)

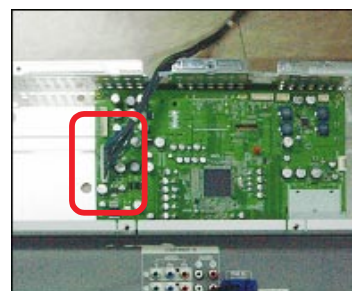


(1) Presione el S/W 'ON' (conecte SCL a GND usando el interruptor del Jig) y conecte el jig de descarga al conector sub-D.

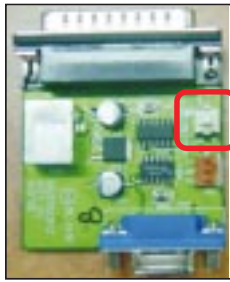


Push S/W

(2) Suministre energía (5V Stand-by) y espere 3 segundos.



(3) Presione el S/W OFF (Desconecte SCL del GND usando el interruptor en el jig.



Push S/W

(7) Haga doble clic en el archivo de descarga inferior, luego "edit window" se abrirá.

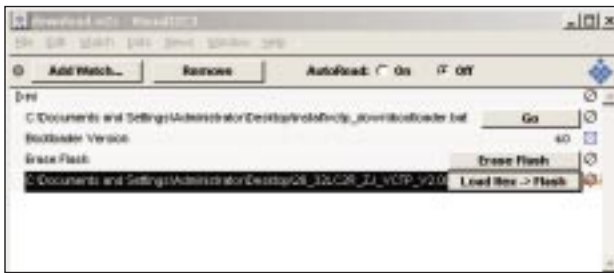
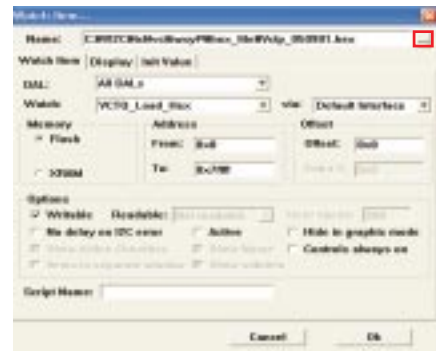


(4) `Ejecute el programa 'Download.vi2c' en la PC, luego una ventana principal se abrirá.

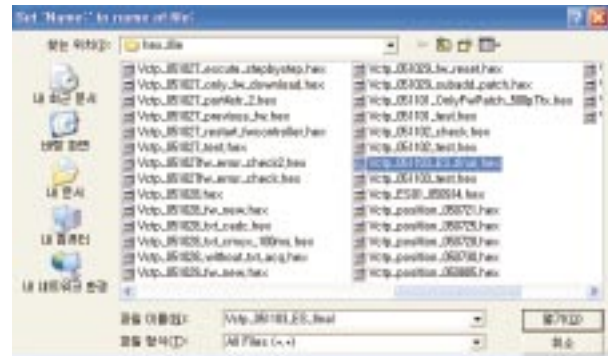


Haga doble clic

(8) Haga clic en el botón de opción en "edit window", luego la "file choice window" se abrirá.



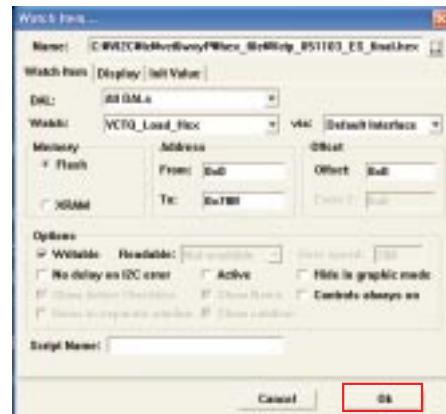
(9) Elija el archivo Hex en la carpeta y ejecute la descarga haciendo clic en botón "open".



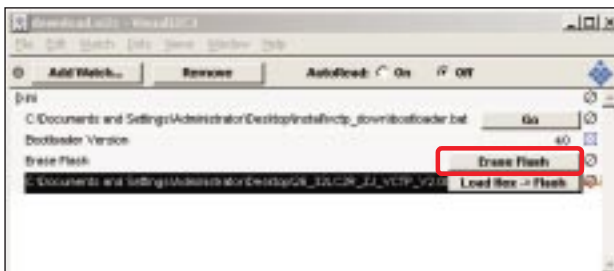
(5) Haga doble clic en la casilla azul y confirme "Bootloader Version" como 40.



(10) Haga clic en el botón OK de "edit window".



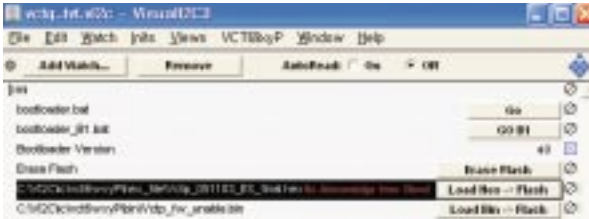
(6) Haga clic en el botón "Erase Flash".



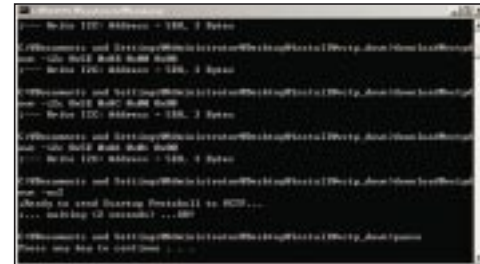
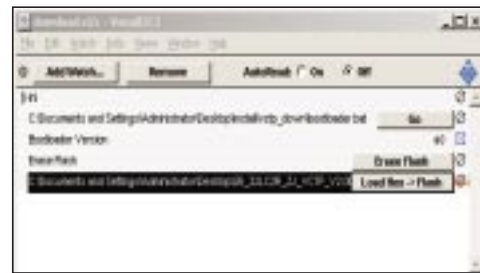
(11) Progreso de descarga



(12) Si falla la descarga, por ejemplo "No acknowledge from slave", ejecute la descarga nuevamente desde el punto (1).



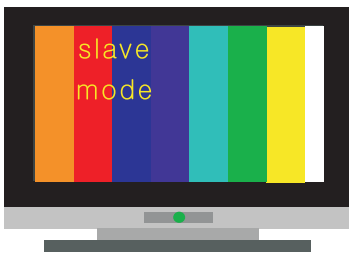
(4) Haga clic en el botón "GO".



Si no presiona "go", el archivo Hex no se descargará aunque la descarga proceda normalmente a primera vista.

4-3. Método 3 de Descarga (AJUSTE)

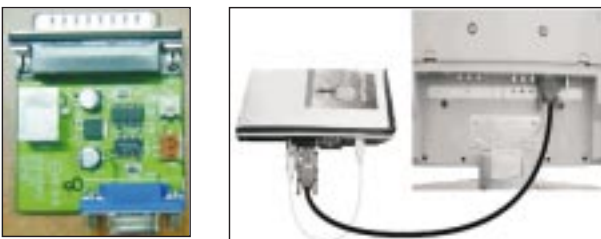
(1) Presione el botón "Tilt" en el C/R para ajuste, luego el PDP cambiará a "slave mode"



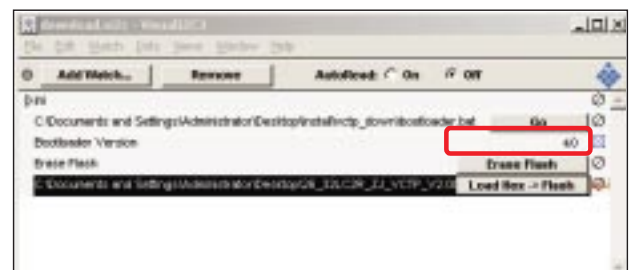
(5) Haga doble clic en la casilla azul y confirme "Bootloader Version" Version" como 40.



(2) Conecte el Zig al TV usando un cable sub-D.



(6) Haga clic en el botón "Erase Flash".



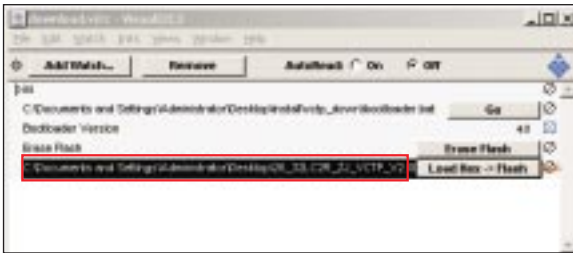
(3) Ejecute el programa 'Download_CS.vi2c' en la PC, luego una ventana principal se abrirá.



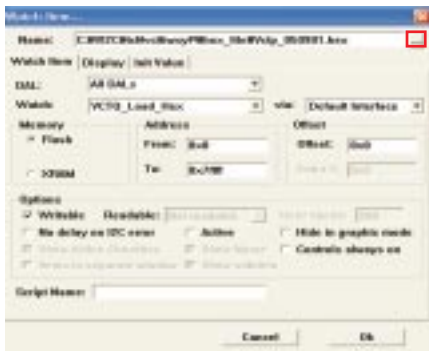
Double click



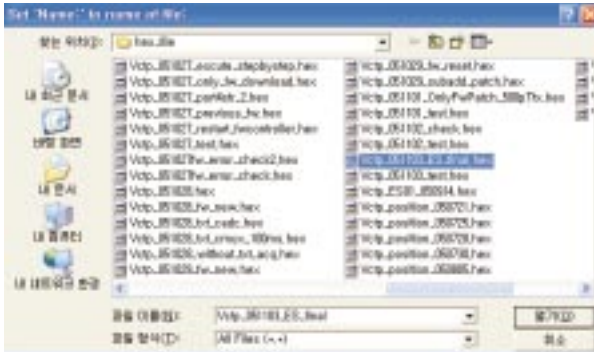
(7) Haga doble clic en el archivo de descarga inferior, luego "edit window" será abierta.



(8) Haga clic en el botón de opción en "edit window", luego "file choice window" será abierta.



(9) Elija el archivo Hex en la carpeta y ejecute la descarga haciendo clic en el botón "open"



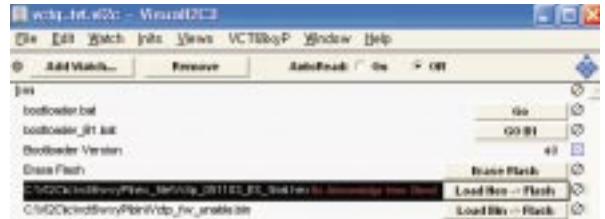
(10) Haga clic en el botón OK en "edit window".



(11) Progreso de descarga



(12) Si falla la descarga, por ejemplo "No acknowledge from slave", ejecute la descarga nuevamente desde el punto (1).



5. Descarga de la Memoria de Canal

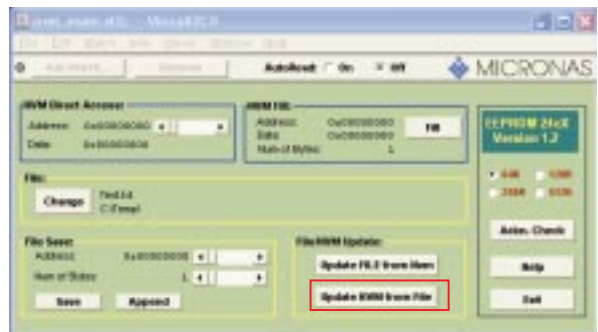
- (1) Conecte el jig de descarga al conector sub-D.
- (2) Ejecute el programa 'Channel.vi2c' en la PC, luego una ventana principal será abierta.



- (3) Presione el botón "change" y seleccione los datos de memoria de canal.



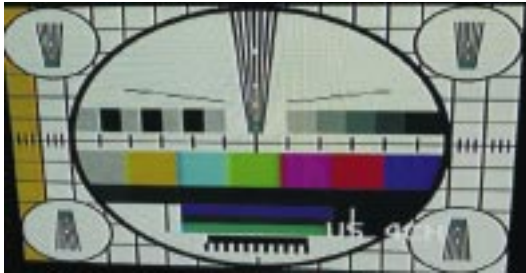
- (4) Presione el "Update NVM" del archivo.



6. Ajuste del Portador de Color

(Proceso de Inspección)

- (1) Sintonicice el canal 4 RF US



- (2) Presione el botón "adj" en el C/R para ajuste.

Precaución: Cada montaje del PCB debe ser verificado por la unidad de verificación del JIG. (Tenga especial cuidado de que el montaje del PCB de alimentación no dañe el Módulo PDP)

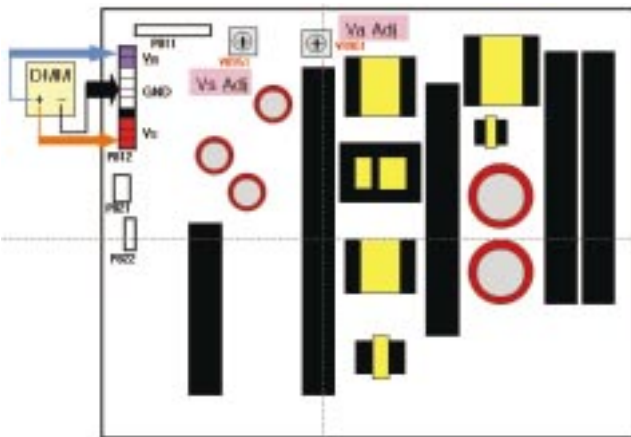
7. Ajuste del Voltaje del Montaje de la PCB de Alimentación

(Ajuste del Voltaje Va, Vs)

7-1. Equipo de Prueba: D.M.M 1C/U

7-2. Diagrama de Conexión para Medición

Refiérase a la Fig.1



(Fig. 1) Diagrama de Conexión del Ajuste de Alimentación para Medición

7-3. Método de Ajuste

Método de Ajuste para la Placa de Alimentación
(P/No: 6709900019A)

(1) Ajuste Va

- 1) Después de recibir el 100% del Patrón Completo de Blanco, HEAT RUN.
- 2) Conecte el terminal + del D.M.M. al pin Va del P812, conecte el terminal - al pin GND del P812.
- 3) Después de girar RV501, el voltaje ajustado D.M.M debe ser igual al voltaje Va el cual aparece en la etiqueta del panel derecho/superior. (desviación $\pm 0.5V$)

(2) Ajuste Vs

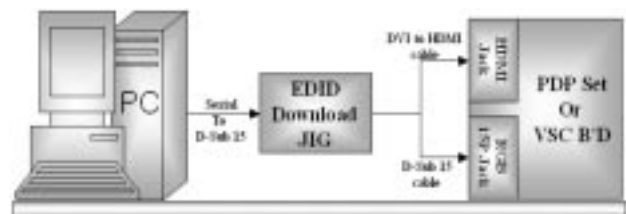
- 1) Conecte el terminal + del D. M..M. al pin Vs del P812, conecte el terminal - al pin GND del P812.
- 2) Después de girar RV 401, el voltaje ajustado D.M.M debe ser igual al voltaje Vs el cual aparece en la etiqueta del panel derecho/superior. (desviación $\pm 0.5V$)

8. Descarga de EDID(Datos Extendidos de Identificación de Pantalla)/DDC(Canal de Datos de Pantalla)

8-1. Equipo de Prueba Requerido

- (1) PC de ajuste con S/W para Datos de escritura EDID.(S/W: EDID TESTER Ver.2.5)
- (2) Un Jig para descarga de EDID.
- (3) Cable: Serial (9 Pines o USB) al cable de 15 pines sub-D, cable de 15 pines sub-D, cable DVI al HDMI.

8-2. Colocación de los Aparatos



(Fig. 2) Diagrama de Conexión de la Descarga DDC

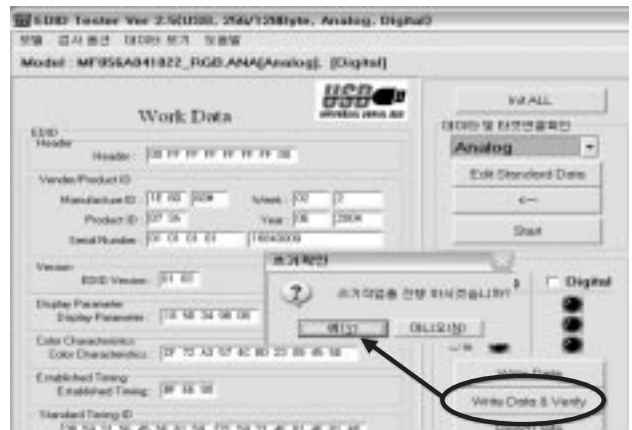
8-3. Preparación para el Ajuste

- (1) Como en la (Fig. 2) arriba, conecte la Unidad, Jig de de Descarga EDID, PC y el Cable.
- (2) Encienda la PC y el Jig de Descarga EDID. Ejecute el S/W : EDID TESTER Ver.2.5
- (3) Opción de configuración del S/W
 Repita el Número : 5
 Dirección del Aparato : A0
 PageByte : 8



(4) Encienda la Unidad.

(4) Presione el botón "Write Data & Verify". Y confirme "Yes".



(5) Si finaliza la escritura, verá el mensaje "OK".

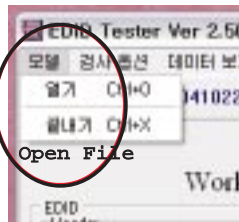
8-4. Secuencia del Ajuste

Datos DDC del RGB-Análogo

(1) Inicie los datos

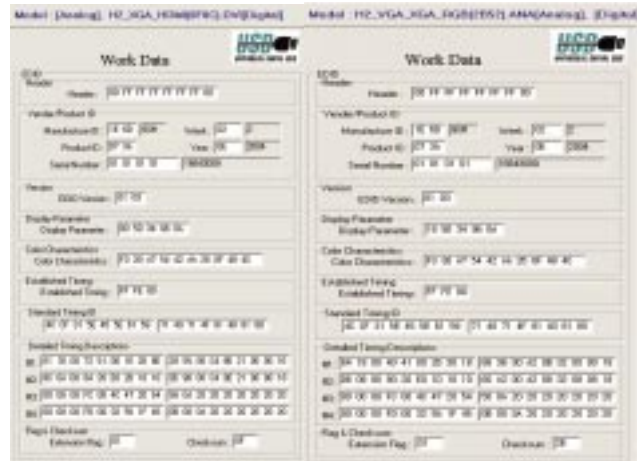


(2) Cargue los datos EDID.(Abra el Archivo).

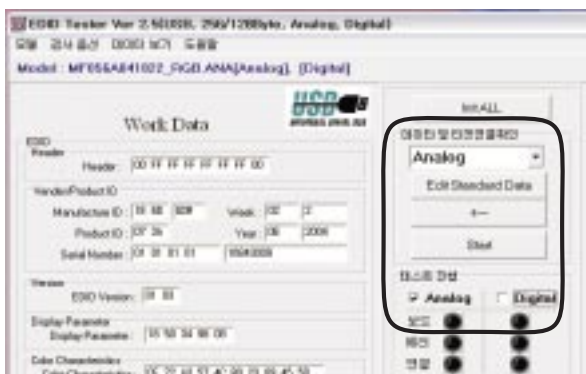


[Analog - RGB :
PP61A/C_RGB.ANA]

[Digital - HDMI :
PP61A/C_HDMI.DVI]



(3) Configure el S/W como se indica abajo.



<Configuración Análoga de DATOS EDID: 128 bytes>

	00	01	02	03	04	05	06	07	08	09	0A	0B	0C	0D	0E	0F
00	00	FF	FF	FF	FF	FF	FF	00	1E	6D	D7	3A	01	01	01	01
10	02	10	01	03	18	5C	34	96	0A	F3	30	A7	54	42	AA	26
20	0F	48	4C	A1	08	00	31	40	01	01	45	40	01	01	61	40
30	01	01	01	01	01	01	D5	09	80	A0	20	E0	2D	10	08	60
40	22	00	98	06	32	08	08	18	64	19	00	40	41	00	26	30
50	18	88	36	00	98	06	32	00	00	18	00	00	00	FC	00	4C
60	47	20	54	56	0A	20	20	20	20	20	20	20	00	00	00	FD
70	00	30	3E	1E	32	08	00	0A	20	20	20	20	20	20	00	4C
80	02	03	1C	72	23	09	07	02	49	07	16	81	03	05	14	13
90	00	00	00	00	00	00	00	00	00	00	00	00	00	00	00	00
A0	00	00	00	00	00	00	00	00	00	00	00	00	00	00	00	00
B0	00	00	00	00	00	00	00	00	00	00	00	00	00	00	00	00
C0	00	00	00	00	00	00	00	00	00	00	00	00	00	00	00	00
D0	00	00	00	00	00	00	00	00	00	00	00	00	00	00	00	00
E0	00	00	00	00	00	00	00	00	00	00	00	00	00	00	00	00
F0	00	00	00	00	00	00	00	00	00	00	00	00	00	00	00	00

<Configuración Digital de DATOS EDID: 256 bytes>

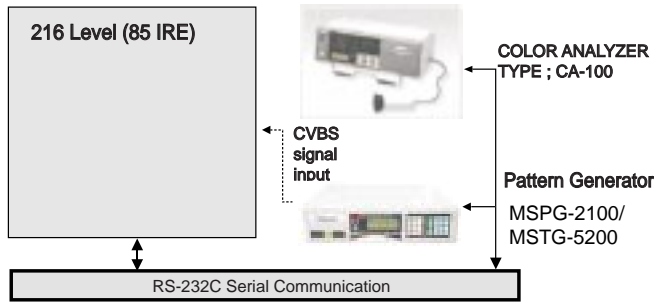
	00	01	02	03	04	05	06	07	08	09	0A	0B	0C	0D	0E	0F
00	00	FF	FF	FF	FF	FF	FF	00	1E	6D	D7	3A	01	01	01	01
10	02	10	01	03	80	5C	34	96	0A	F3	30	A7	54	42	AA	26
20	0F	48	4C	00	00	00	01	01	01	01	01	01	01	01	01	01
30	01	01	01	01	01	01	8C	0A	D0	8A	20	E0	2D	10	10	3E
40	96	00	C4	8E	21	00	00	18	00	00	00	FC	00	4C	47	20
50	54	56	0A	20	20	20	20	20	20	20	00	00	00	FD	00	2D
60	41	19	30	08	00	0A	20	20	20	20	20	20	00	00	00	00
70	00	00	00	00	00	00	00	00	00	00	00	00	00	00	01	55
80	02	03	1C	72	23	09	07	02	49	07	16	81	03	05	14	13
90	12	04	83	01	00	00	65	03	0C	00	10	00	01	1D	80	18
A0	71	1C	16	20	58	2C	25	00	C4	8E	21	00	00	9E	01	1D
B0	80	D0	72	1C	16	20	10	2C	25	80	C4	8E	21	00	00	9E
C0	01	1D	00	BC	52	D0	1E	20	B8	28	55	40	C4	8E	21	00
D0	00	1E	8C	0A	D0	90	20	40	31	20	0C	40	55	00	C4	8E
E0	21	00	00	18	01	1D	00	72	51	D0	1E	20	6E	28	55	00
F0	C4	8E	21	00	00	1E	00	00	00	00	00	00	00	00	00	2F

9. Ajuste del Balance de Blanco

9-1. Equipo Requerido

- (1) Control Remoto para Ajuste.
- (2) Analizador de Color (CA-100 o producto similar)
- (3) Instrumento de Ajuste Automático de W/B (sólo para ajuste automático)
- (4) Generador de Patrón AV

9-2. Diagrama de Conexión del Equipo para Medición (Para el ajuste automático)



(Fig. 3) Diagrama de Conexión del Ajuste Automático W/B

Mapa del Ajuste Automático (RS-232C)

Tipo		PN61A				
Velocidad de Transmisión	Bit de Datos	Bit de Parada		Paridad		
115200	8	1		NINGUNA		
Config. Protocolo	Índice	Cmd1	Cmd2	Datos	Valor Min.	Valor Máx.
	R Gain	j	a		00(00)	255(FF)
	G Gain	j	b		00(00)	255(FF)
	B Gain	j	c		00(00)	255(FF)
	R Offset	j	d		00(00)	255(FF)
	G Offset	j	e		00(00)	255(FF)
	B Offset	j	f		00(00)	255(FF)

9-3. Ajuste del Balance de Blanco

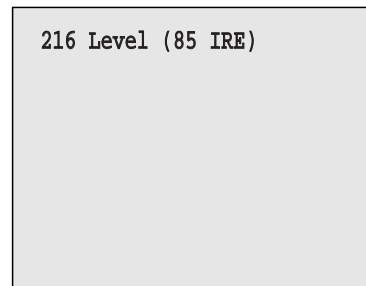
(Para Ajuste Manual)

- Opere la calibración cero del CA-100, luego pegue el sensor a la superficie del módulo PDP cuando ajusta.
- El ajuste manual también es posible con la siguiente secuencia:

- (1) Seleccione el patrón blanco del modo heat-run presionando el botón "Power" del control remoto para ajuste, luego opere heat-run por más de 15 minutos.
- (2) Como se muestra en la Fig. 4, suministre el patrón de pantalla completo de 216 Niveles (85 IRE) a la entrada de Video.
- (3) Presione la Tecla TV/AV en el C/R para convertir el modo de entrada.
- (4) Fije el PSM al modo Estándar en el menú "Picture".
- (5) Entre al modo de ajuste del Balance de Blanco presionando dos veces la tecla "INSTART" (Balance de Blanco) en el C/R.
- (6) Pegue el sensor al centro de la pantalla y seleccione cada ítem (Red/Green/Blue Gain y Offset) usando la tecla ▲/▼ (CH +/-) en el C/R.
- (7) Ajuste solamente la Luz Alta con R Gain / B Gain usando ◀/▶ (VOL +/-) en el C/R.
- (8) Ajuste hasta que la coordinación del color sea como abajo:

Brillo: Luz Alta: $80 \pm 20 \text{cd/m}^2$
 Coordinada de Color : Luz Alta: X : 0.283 ± 0.003
 Y : 0.298 ± 0.003

Temperatura del Color: $9,300^\circ\text{K} \pm 500^\circ\text{K}$



(Fig. 4) Patrón para el Ajuste del Balance de Blanco

- (9) Cuando se completa el ajuste, salga del modo de ajuste usando la tecla "EXIT" en el C/R.

GUÍA PARA SOLUCIONES DE PROBLEMAS

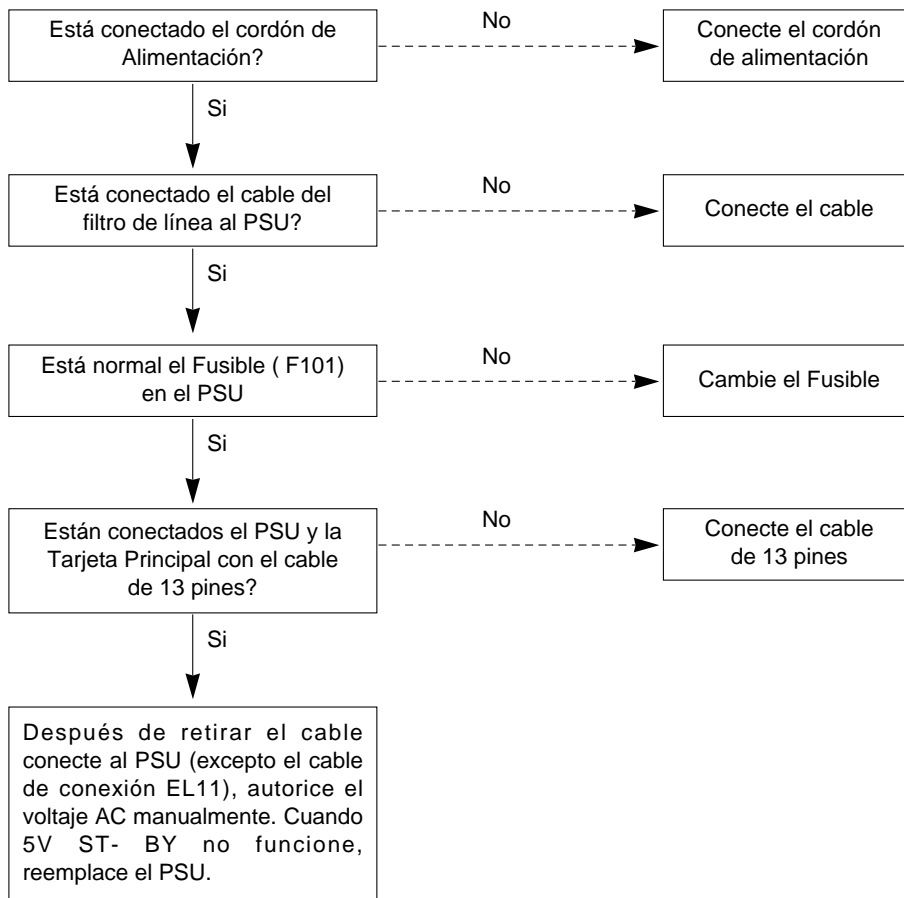
1. No Hay Alimentación

(1) Síntoma

- 1) LED frontal no enciende.
- 2) La Unidad no descarga la minuta.



(2) Proceso de Verificación



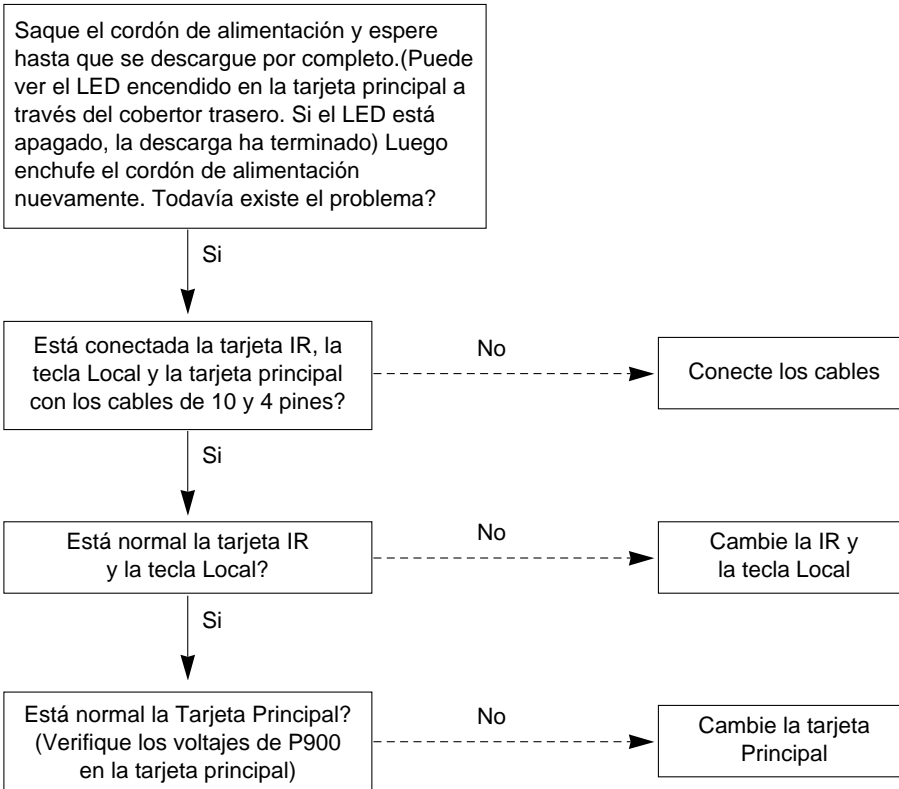
2. No Enciende

(1) Síntoma

- 1) El LED frontal está Rojo, pero no cambia a Verde.
(No se puede encender la UNIDAD)
- 2) No funciona el encendido usando el C/R o tecla LOCAL.



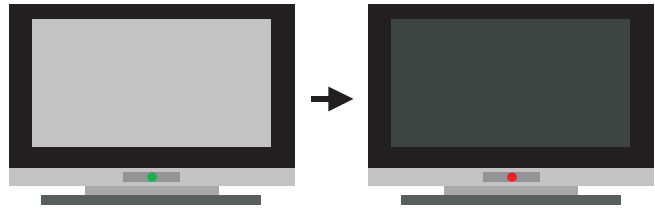
(2) Proceso de Verificación



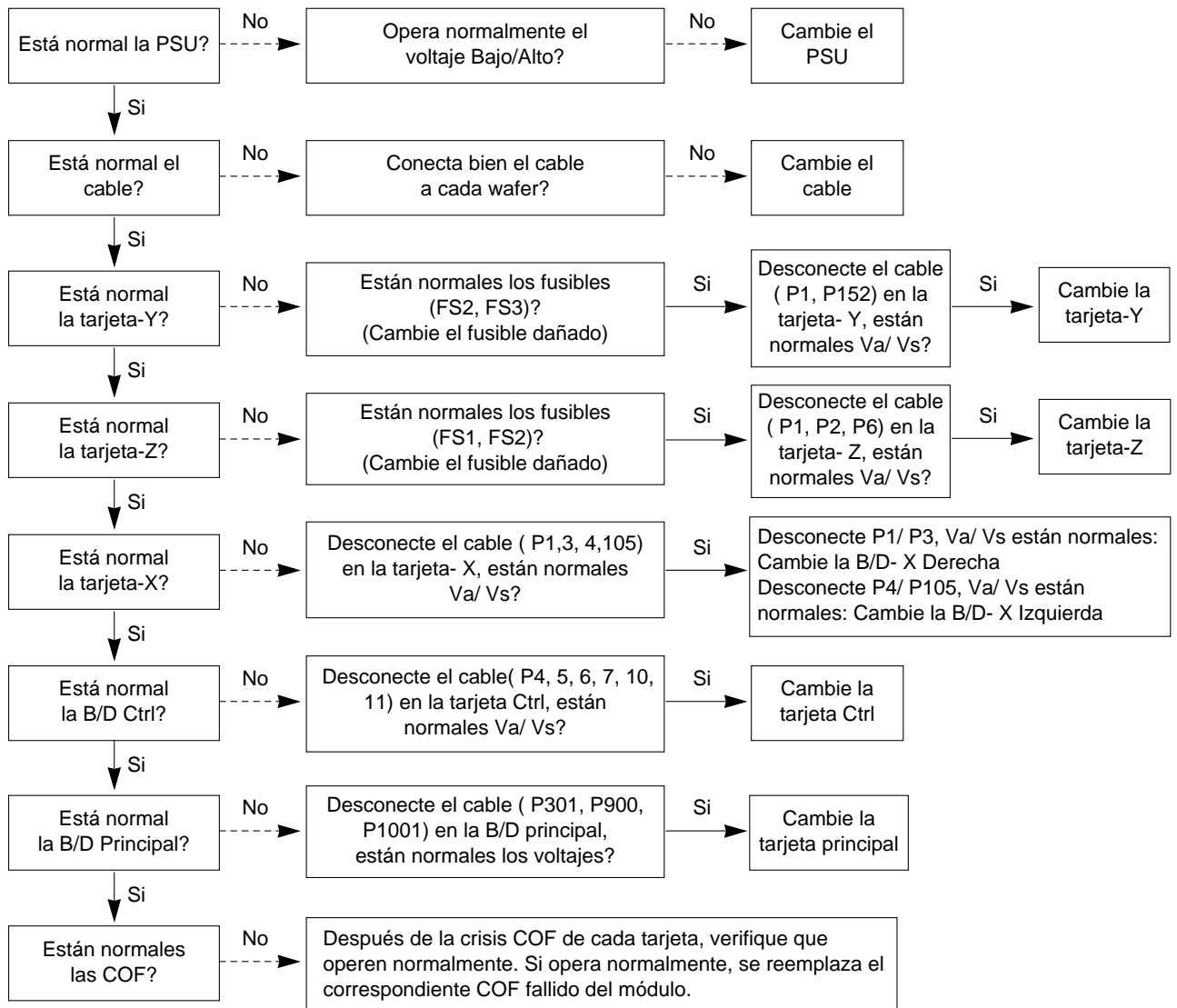
3. Modo de Protección

(1) Síntoma

- 1) Después de brillar una vez, no se descarga la minuta del módulo.
- 2) Falla el Relay (El sonido "clic" es audible)
- 3) El LED frontal se torna de Verde a Rojo.



(2) Proceso de Verificación



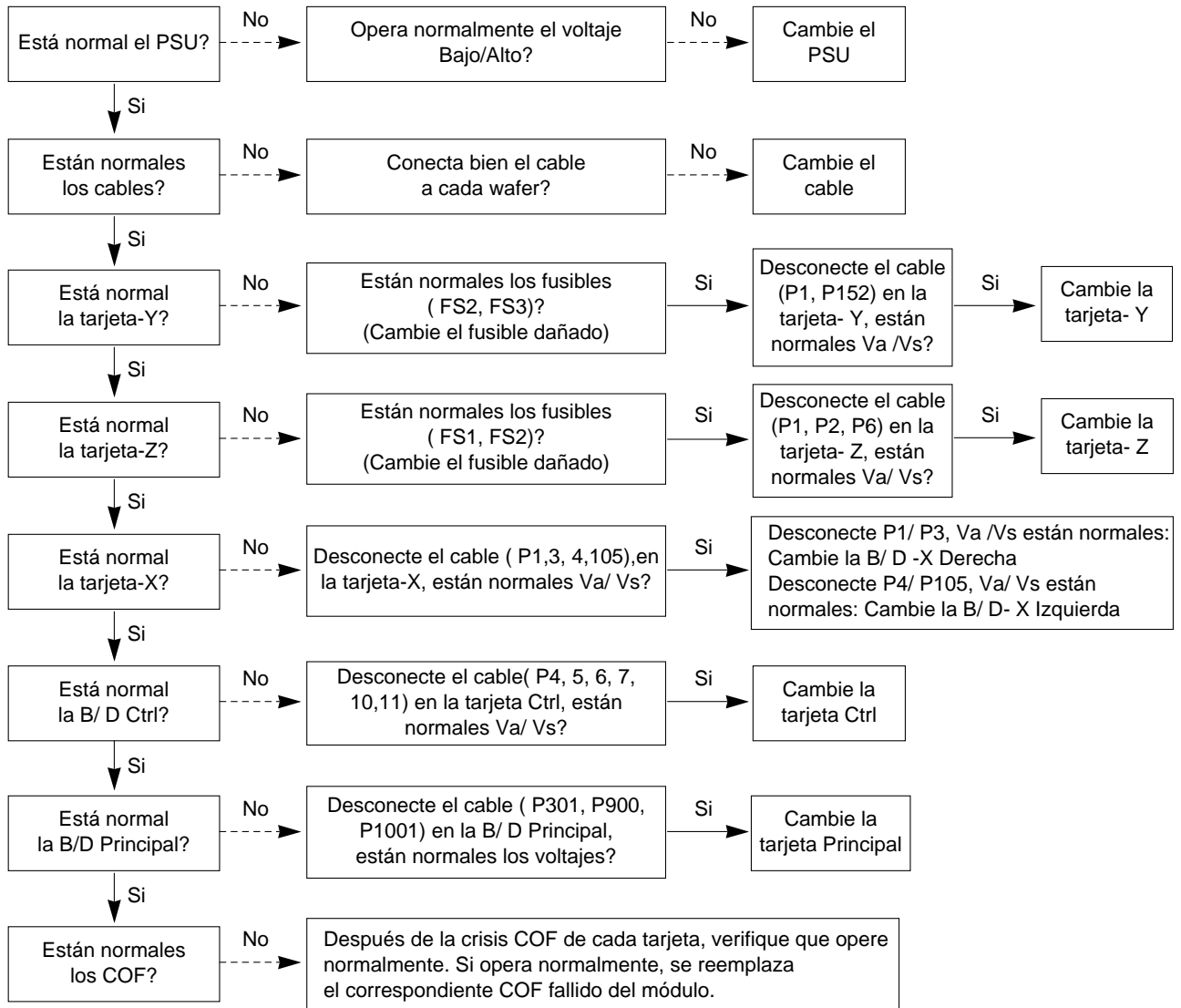
4. No Hay Raster

(1) Síntoma

- 1) El LED frontal está Verde
- 2) La Unidad no descarga la minuta.



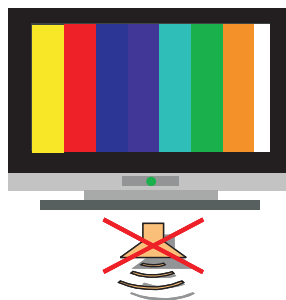
(2) Proceso de Verificación



5. No Hay Sonido

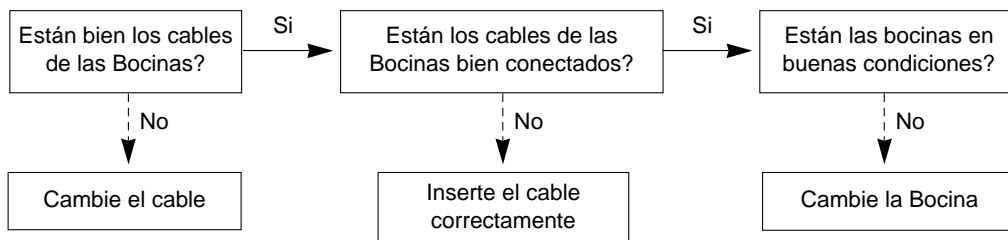
(1) Síntoma

- 1) El LED frontal está Verde
- 2) La Unidad despliega una pantalla, pero no hay sonido

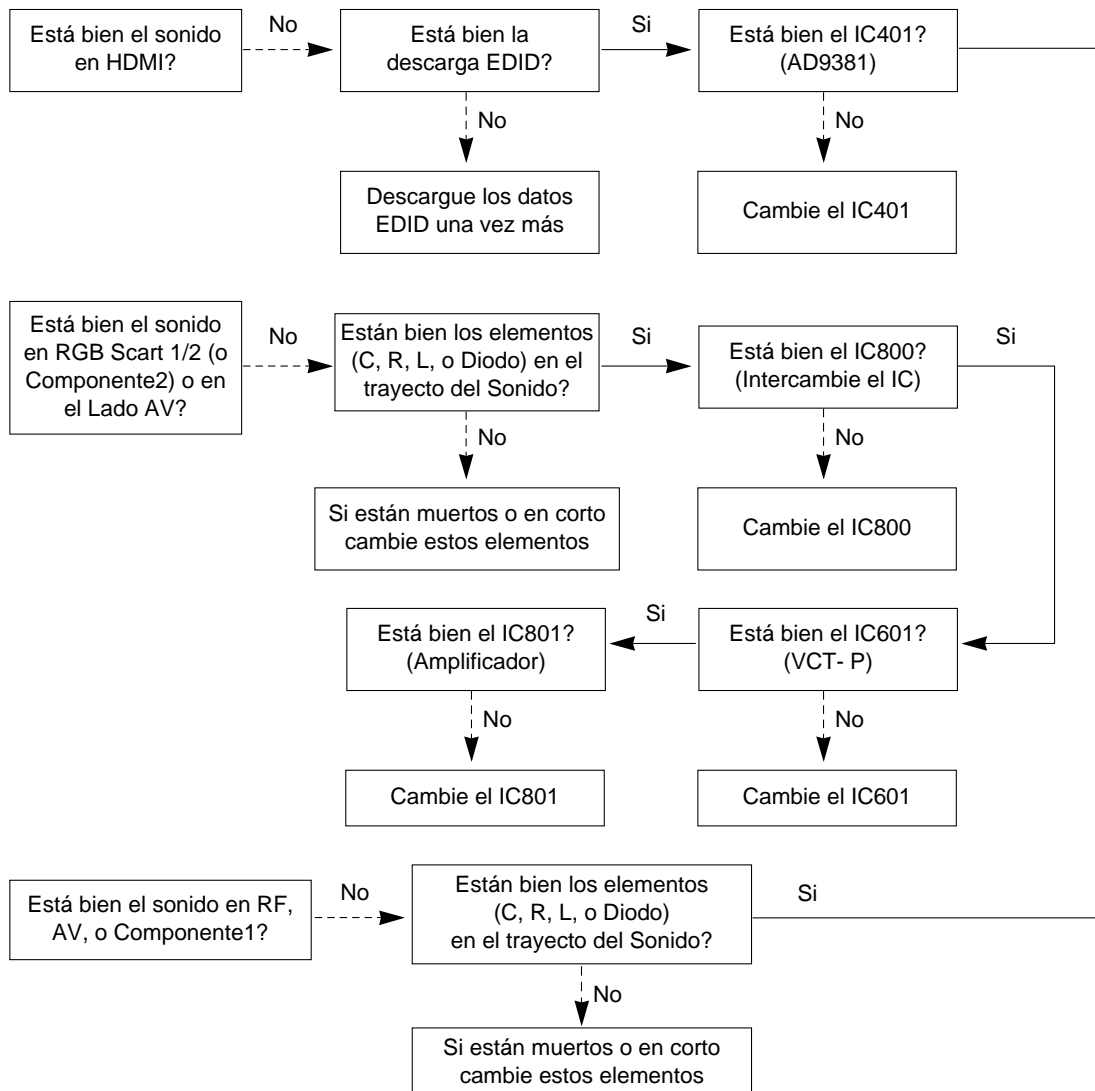


(2) Proceso de Verificación

1) Bocinas



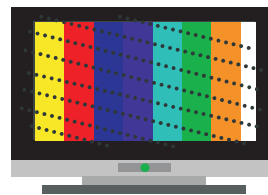
2) Tarjeta Principal



6. Desplegado Extraño de la Pantalla

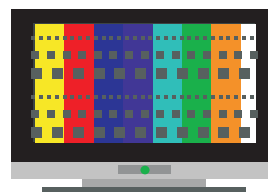
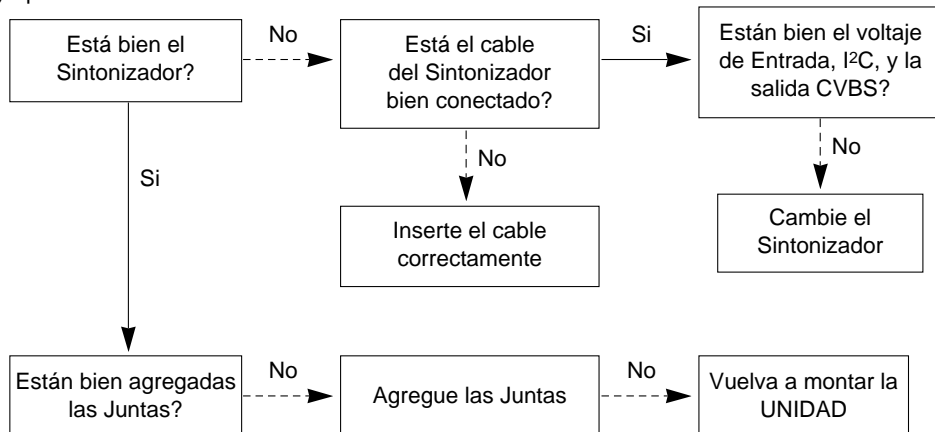
(1) Síntoma

1) Desplegado extraño de la pantalla en modo específico

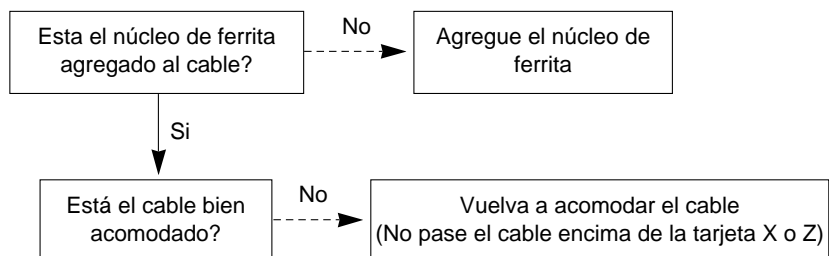


(2) Proceso de Verificación

1) Aparece ruido en el modo RF.



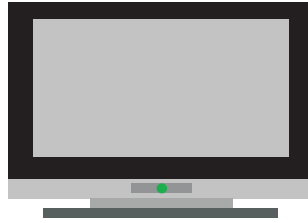
2) El Ruido aparece en el Lado de AV.



7. No Hay Imagen

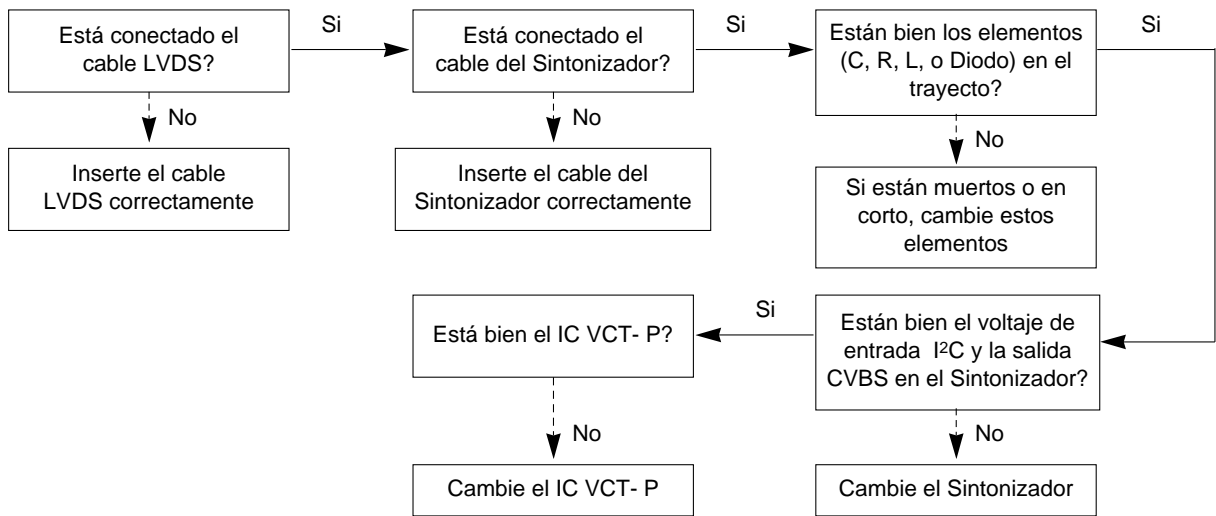
(1) Síntoma

- 1) Algunos modos no se despliegan.
- 2) El LED frontal está verde.
- 3) La unidad permanece descargando la minuta

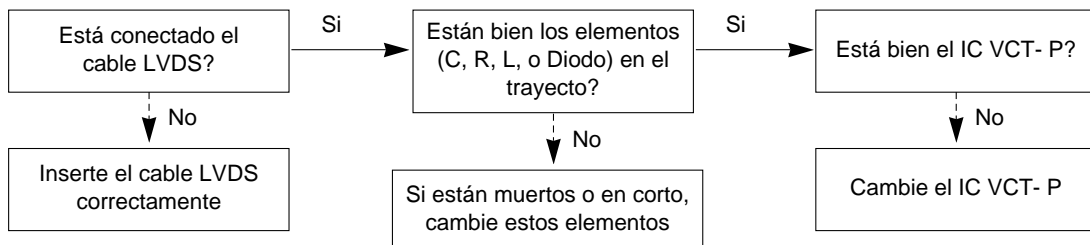


(2) Proceso de Verificación

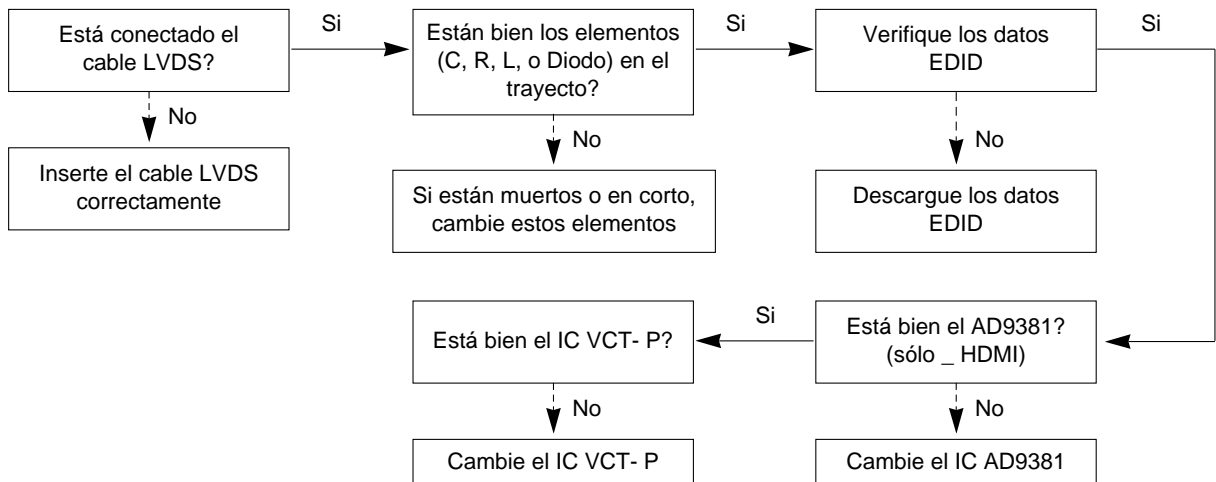
1) No se despliega el modo - RF.



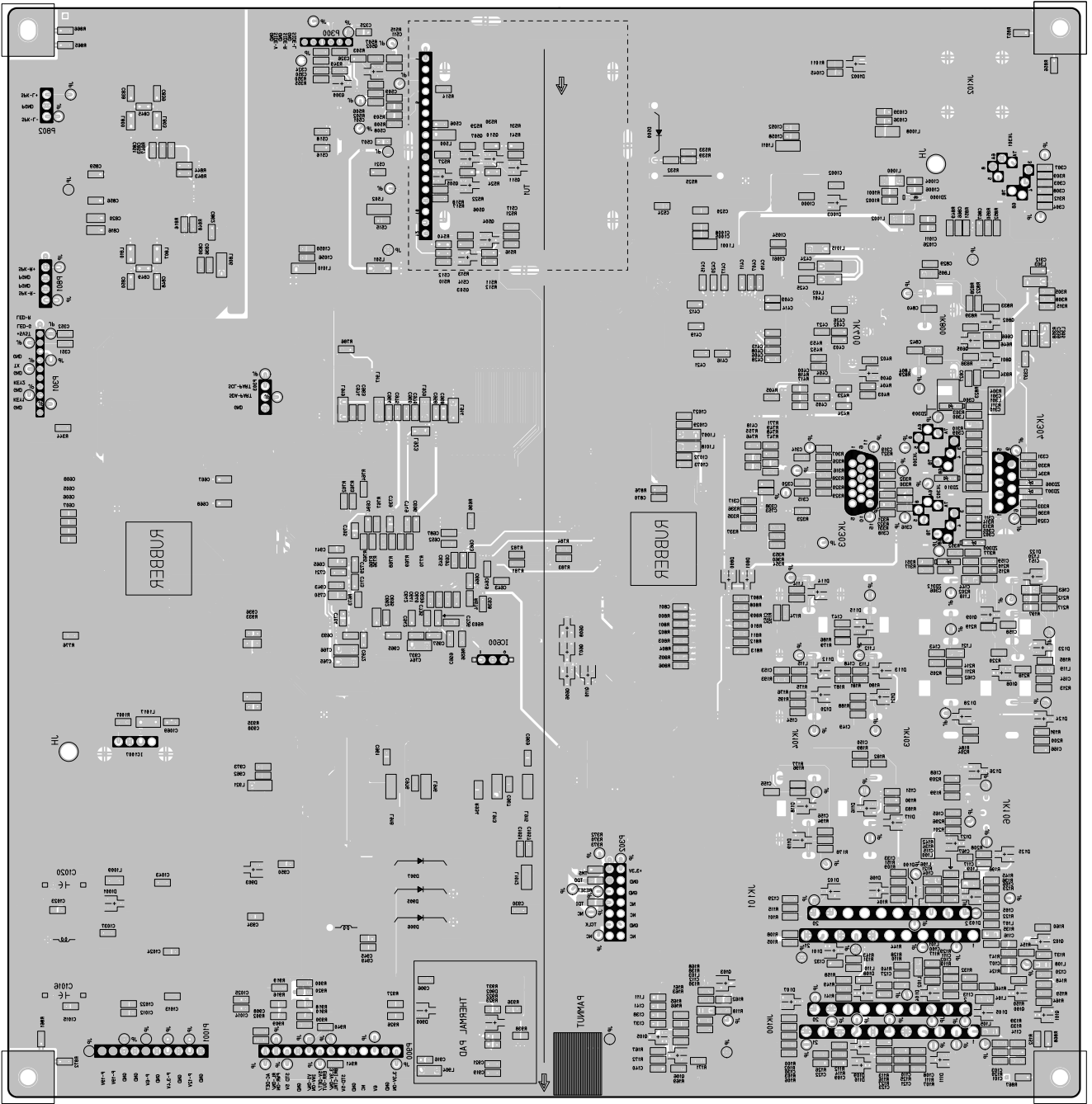
2) No se despliega el modo AV/Componente



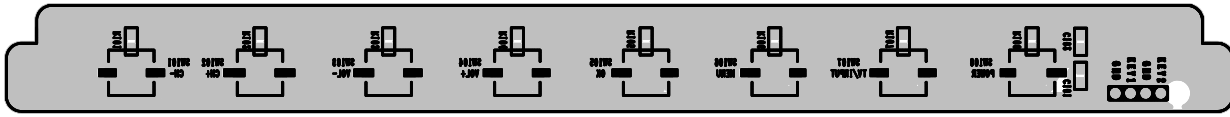
3) No se despliega el modo RGB/HDMI.



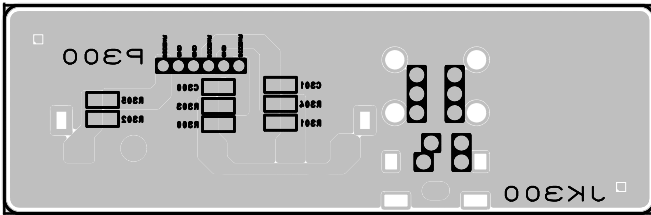
MAIN(BOTTOM)



CONTROL



SIDE A/V



PRE-AMP

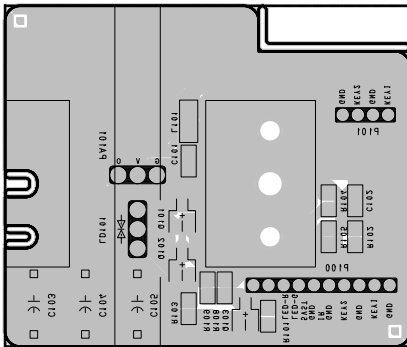
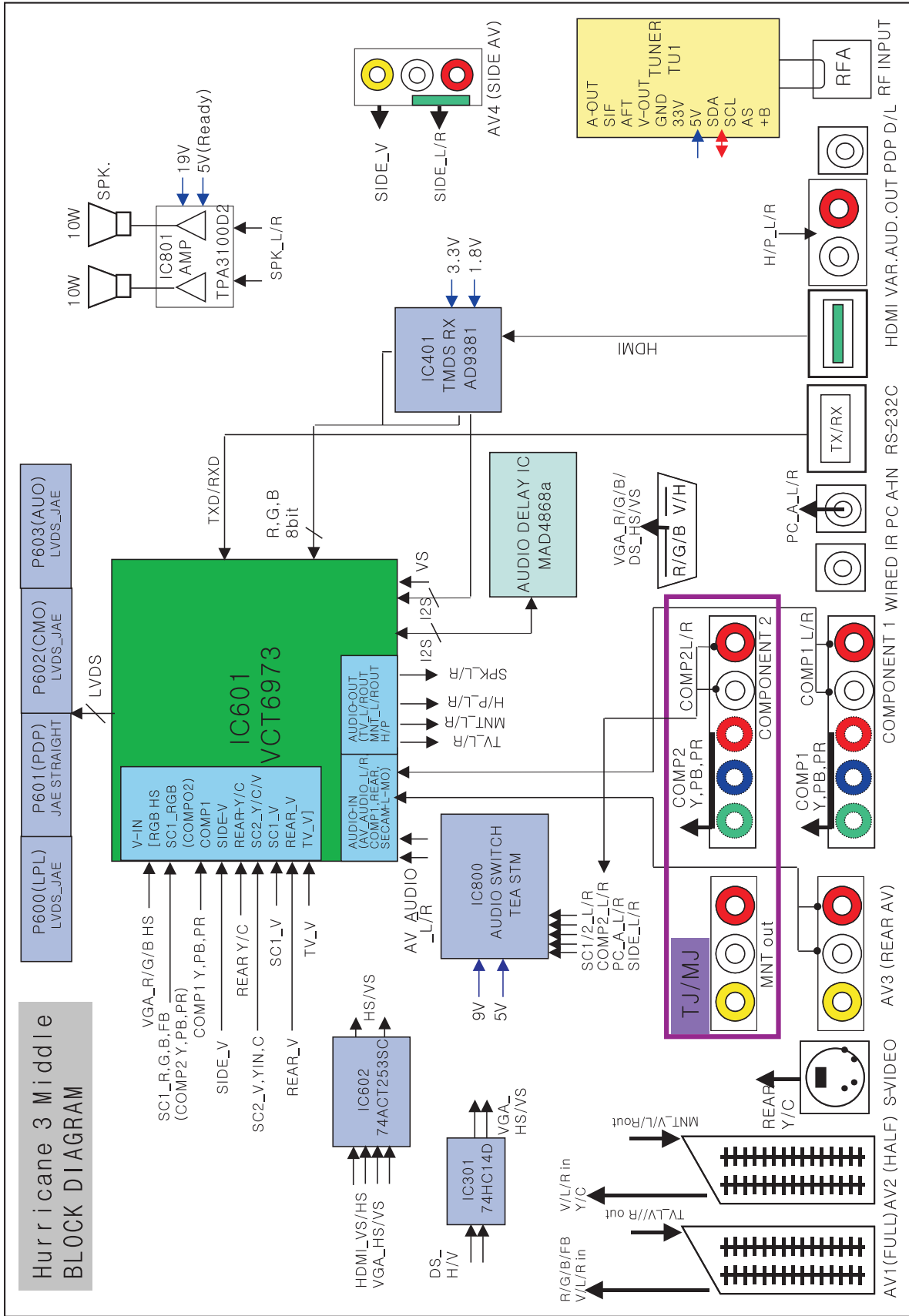
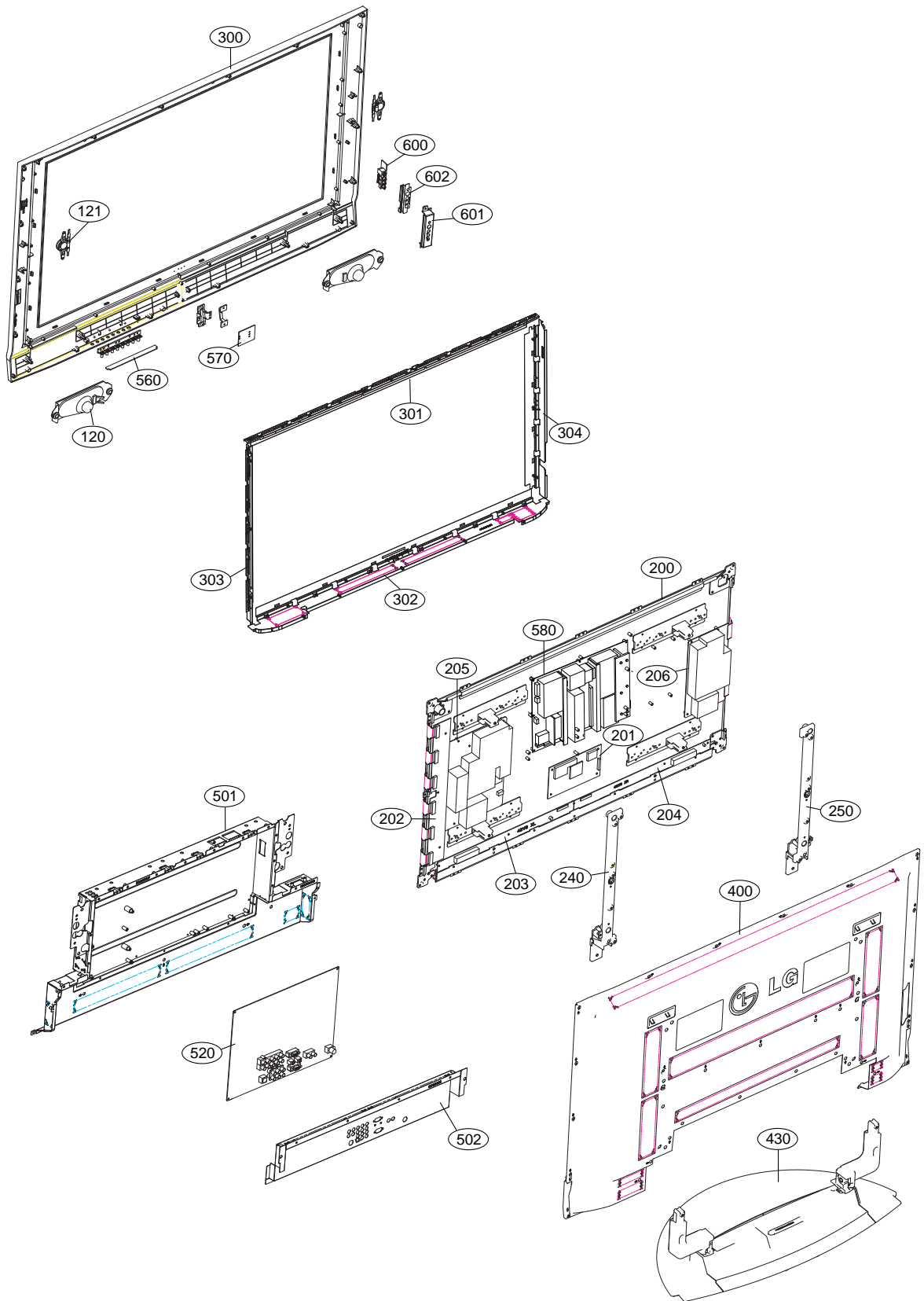


DIAGRAMA EN BLOQUE



MEMO

VISTA EN DESPIECE



LISTA DE VISTA EN DESPIECE

No.	Part No.	Description
120	EAB30829201	Speaker, Woofer g1560102 ND 15W 8OHM 82DB 100HZ
121	EAB30824301	Speaker, Tweeter D013d03k1401 ND 15W 8OHM 86DB 0HZ
△ 200	6348Q-E113H	PDP, Module-VGA PDP42V80201.AKLGGA VGA 42INCH 852X480 16/9
	6348Q-E127X	PDP, Module-VGA PDP42V80301.ADLGB VGA 42INCH
201	6871QCH074A	PCB Assembly, Display CTRL ASSY 42 42V8 4005 ASIC LVDS
202	6871QDH118A	PCB Assembly, Display YDRV ASSY 42 42V8 80PIN SCAN IC APLICACION
203	6871QLH057A	PCB Assembly, Display XRLT ASSY 42 42V8 XL 4004 ASIC LVDS
204	6871QRH067A	PCB Assembly, Display XRRT ASSY 42 42V8 XR 4004 ASIC LVDS
205	6871QYH048A	PCB Assembly, Display YSUS ASSY 42 42V8 Y SUS B/D
206	6871QZH053A	PCB Assembly, Display ZSUS ASSY 42 42V8
240	4980900109A	Supporter, COMPLEX ASSY AL 42PC1R-TA, VERTICAL RIGHT
	4980900109C	Supporter ASSY, AL 42PC1R-TA, VERTICAL RIGHT, C/SKD
250	4980900109B	Supporter, COMPLEX ASSY AL 42PC1R-TA, VERTICAL LEFT
	4980900109D	Supporter ASSY, AL 42PC1R-TA, VERTICAL LEFT, C/SKD
△ 300	30919E0024L	Cover Assembly, 42PC1RV-MJ BRAND 30909E0008A 3211900003A
	30919E0854P	Cover Assembly, 42PC1RVH-MJ.SWHLLJR PN61A 42 LGERS SKD
301	4980900113A	Supporter, COMPLEX ASSY AL FILTER TOP 42PC1R-TA
	4980900113B	Supporter ASSY, AL FILTER TOP 42PC1R-TA C/SKD
302	4980900114A	Supporter, COMPLEX ASSY AL FILTER BOTTOM 42PC1R-TA
	4980900114B	Supporter ASSY, AL FILTER BOTTOM 42PC1R-TA C/SKD
303	4980900115A	Supporter, COMPLEX ASSY AL FILTER RIGHT 42PC1R-TA
	4980900115B	Supporter ASSY, AL FILTER RIGHT 42PC1R-TA, C/SKD
304	4980900116A	Supporter, COMPLEX ASSY AL FILTER LEFT 42PC1-TA
	4980900116B	Supporter ASSY, AL FILTER LEFT 42PC1-TA, C/SKD
△ 400	3809900103Z	Cover Assembly, 42PC1RV-MJ PD-61A 42 FOR CHILE
	ACQ30342106	Cover Assembly, 42PC1RVH-MJ PN61A 42 LGERS ASSEMBLE PHANTOM
△ 430	3501900014J	Base Assembly, D/T SPK STAND AP-42DC11 FOLDING STAND FOR LGEAZ SET
	3501900014L	Base Assembly, D/T SPK STAND FOLDING STAND LGERS SKD
501	3301900095D	Plate Assembly, AV 42PC VCTP
502	3301900094E	Plate Assembly, PDP PC SERIES NON EU
520	68719MMV95A	PCB Assembly, Main PN61A 42PC1RV MJ
560	68719SMJ63D	PCB Assembly, Sub PP61A 42PC1RV ZJ/TJ/MJ LOCAL EMS
	68719SMJ63A	Hand Insert PCB Assembly, Sub PP61A 42PC3RV
570	68719SMJ64D	PCB Assembly, SUB M.I PP61A 42PC1RV Z PREAMP ONLY 30TOOL EMS
	68719SMJ64A	Hand Insert PCB Assembly, Sub PP61A 42PC3RV
△ 580	68719PT299A	PCB Assembly, Power PA61A 42INCH PDP UNIFICATION PSU ALL GUMI
600	68719SMJ74A	PCB Assembly, Sub PP61A 42PC3RV ZJ SIDEAV
601	4811900021D	Bracket Assembly, SIDE AV 42PC1RV-TH PP62A CORTEZ, NON EU
602	48149V0003A	Plate, PRESS SPTTE T0.3 SIDE AV 42PC1R

LISTA DE PARTES DE REPUESTO

RUN DATE : 2006.7.19

LOCA. NO	PART NO	DESCRIPTION
IC		
IC1001	0IPMGKE030A	KIA78R05F 6TO12V 5V 8W
IC1003	0IMCRFA010A	KA7809R 11.5TO24V 9V 1
IC1008	0IPMGSG018D	LD1086DT18TR-LF 30V
IC300	0ICS240213A	CAT24WC02J-TE13 2KBIT
IC302	0IPRP00009A	ICL3232CBNZ 3.0TO5.5 -
IC303	0ISTL00031A	MC74HC4066ADR2G MC74HC
IC400	0IMMRAL014D	AT24C02BN-10SU-1.8
IC401	0IPRP00701A	AD9381KSTZ 3.15TO3.47,
IC600	0IFA752700A	KA75270Z 2.55TO2.85V -
IC601	0IPRP00689B	VCT6973G-FA-B2-000 0.3
IC602	0IFA742530B	74ACT253SC 4.5TO5.5V 0
IC603	0IMMRAL025A	AT24C32AN-10SI-2.7 32K
IC800	0IPRP00665A	TEA6420D 8TO10.2V 8mA
IC801	0IPRP00700A	TPA3100D2PHPR 10TO26V
IC802	0IPRP00743A	MAD4868A 3TO5.25V - -
IC900	0IMCRRH001A	BA033FP-E2 4.3TO25V 3.
IC902	0IPMG00027A	SC156515M-1.8TR 2.2TO5
IC903	0IMCRRH001A	BA033FP-E2 4.3TO25V 3.
PC201	0ILI817000G	LTV-817M-VB 6V 35V 35V
PC204	0ILI817000G	LTV-817M-VB 6V 35V 35V
PC501	0ILI817000G	LTV-817M-VB 6V 35V 35V
PC502	0ILI817000G	LTV-817M-VB 6V 35V 35V
PC601	0ILI817000G	LTV-817M-VB 6V 35V 35V
PC701	0ILI817000G	LTV-817M-VB 6V 35V 35V
PC712	0ILI817000G	LTV-817M-VB 6V 35V 35V
PC901	0ILI817000G	LTV-817M-VB 6V 35V 35V
PC951	0ILI817000G	LTV-817M-VB 6V 35V 35V
U131	0IKE431000B	KIA431 36V 36V 700MW T
U132	0IKE431000B	KIA431 36V 36V 700MW T
U151	0IPMGFA073A	KA7552A 10TO30V 16.5V
U201	0IKE431000B	KIA431 36V 36V 700MW T
U221	0IPMG78442A	NJM2374AD 2.5TO40V 40V
U261	0IMCRKE014A	KIA278R12PI 13TO29V 12
U271	0IKE431000B	KIA431 36V 36V 700MW T
U281	0IKE431000B	KIA431 36V 36V 700MW T
U501	0IPMG78398A	STR-W6251 SANKEN 6PIN,
U601	0IPMG78441A	ICE1PCS02 -0.3TO22V -
U701	0IZZ9H9009A	0IMCR02273A 0IMCR02273
U801	0IPMG78439A	MR4040 11TO18V - 10W T
U851	0IPMG78440A	MR5060 16V - 20W TO-22
U901	0IKE431000B	KIA431 36V 36V 700MW T
U951	0IKE431000B	KIA431 36V 36V 700MW T
TRANSISTOR		
Q101	0TR387500AA	2SC3875S(ALY) NPN 5V 60V 50V
Q102	0TR387500AA	2SC3875S(ALY) NPN 5V 60V 50V
Q103	0TR387500AA	2SC3875S(ALY) NPN 5V 60V 50V

LOCA. NO	PART NO	DESCRIPTION
Q108	0TR387500AA	2SC3875S(ALY) NPN 5V 60V 50V
Q109	0TR387500AA	2SC3875S(ALY) NPN 5V 60V 50V
Q110	0TR387500AA	2SC3875S(ALY) NPN 5V 60V 50V
Q111	0TR387500AA	2SC3875S(ALY) NPN 5V 60V 50V
Q112	0TR387500AA	2SC3875S(ALY) NPN 5V 60V 50V
Q113	0TR387500AA	2SC3875S(ALY) NPN 5V 60V 50V
Q121	0TR319809AA	KTC3198(KTC1815) NPN 5V 60V 5
Q151	0TFST10002A	FET,STP6NK90ZFP(FORMING)
Q152	0TR103009AD	KRC103M NPN 40V - 50V 100MA 5
Q201	0TFTH50001A	FET,2SK2961 0V
Q202	0TR150400BA	2SA1504S(ASY) PNP -5V -50V -5
Q223	0TRSK10001A	2SA1568 PNP -6V -60V -60V 12A
Q251	0TR126609AA	KTA1266-Y(KTA1015) PNP -5V -5
Q253	0TR320000AB	KTC3200-BL (KTC2240) BK KEC -
Q262	0TFFC10028A	FET,FQPF27P06
Q271	0TR103009AG	KRC103S NPN 40V - 50V 100MA 5
Q281	0TFFC10027A	FET,FQPF13N06L
Q300	0TR387500AA	2SC3875S(ALY) NPN 5V 60V 50V
Q301	0TR387500AA	2SC3875S(ALY) NPN 5V 60V 50V
Q400	0TR387500AA	2SC3875S(ALY) NPN 5V 60V 50V
Q401	0TR830009BA	FET,BSS83
Q402	0TR830009BA	FET,BSS83
Q501	0TRKE50004A	KTC3209 NPN 5V 50V 50V 2A 100
Q502	0TR387500AA	2SC3875S(ALY) NPN 5V 60V 50V
Q503	0TR150400BA	2SA1504S(ASY) PNP -5V -50V -5
Q504	0TR387500AA	2SC3875S(ALY) NPN 5V 60V 50V
Q505	0TR150400BA	2SA1504S(ASY) PNP -5V -50V -5
Q506	0TR150400BA	2SA1504S(ASY) PNP -5V -50V -5
Q507	0TR387500AA	2SC3875S(ALY) NPN 5V 60V 50V
Q508	0TR830009BA	FET,BSS83
Q509	0TR830009BA	FET,BSS83
Q510	0TR150400BA	2SA1504S(ASY) PNP -5V -50V -5
Q511	0TR150400BA	2SA1504S(ASY) PNP -5V -50V -5
Q512	0TR387500AA	2SC3875S(ALY) NPN 5V 60V 50V
Q513	0TR387500AA	2SC3875S(ALY) NPN 5V 60V 50V
Q601	0TFFN10010A	FET,SD20N60 50V
Q602	0TFFN10010A	FET,SD20N60 50V
Q603	0TRRH80083A	2SC5826TV2Q NPN 6V 60V 60V 3A
Q604	0TRRH80082A	2SA2073TV2Q PNP -4V -60V -40V
Q605	0TRKE50004A	KTC3209 NPN 5V 50V 50V 2A 100
Q605	0TRIH80004A	RT1P141C-T112 NPN -10V -50V -
Q606	0TR150400BA	2SA1504S(ASY) PNP -5V -50V -5
Q607	0TR387500AA	2SC3875S(ALY) NPN 5V 60V 50V
Q608	0TR150400BA	2SA1504S(ASY) PNP -5V -50V -5
Q611	0TR387500AA	2SC3875S(ALY) NPN 5V 60V 50V
Q613	0TR150400BA	2SA1504S(ASY) PNP -5V -50V -5
Q614	0TR150400BA	2SA1504S(ASY) PNP -5V -50V -5
Q615	0TR150400BA	2SA1504S(ASY) PNP -5V -50V -5
Q617	0TR150400BA	2SA1504S(ASY) PNP -5V -50V -5

For Capacitor & Resistors, the characters at 2nd and 3rd digit in the P/No. means as follows;	CC, CX, CK, CN : Ceramic CQ : Polyester CE : Electrolytic	RD : Carbon Film RS : Metal Oxide Film RN : Metal Film RF : Fusible
--	---	--

LOCA. NO	PART NO	DESCRIPTION
Q701	0TRRH80052A	2SD2114K NPN 12V 25V 20V 500M
Q702	0TRRH80052A	2SD2114K NPN 12V 25V 20V 500M
Q801	0TR319809AA	KTC3198(KTC1815) NPN 5V 60V 5
Q801	0TR387500AA	2SC3875S(ALY) NPN 5V 60V 50V
Q802	0TR387500AA	2SC3875S(ALY) NPN 5V 60V 50V
Q851	0TR319809AA	KTC3198(KTC1815) NPN 5V 60V 5
Q901	0TR387500AA	2SC3875S(ALY) NPN 5V 60V 50V
Q902	0TR387500AA	2SC3875S(ALY) NPN 5V 60V 50V
Q903	0TR387500AA	2SC3875S(ALY) NPN 5V 60V 50V
Q904	0TR387500AA	2SC3875S(ALY) NPN 5V 60V 50V
Q905	0TR387500AA	2SC3875S(ALY) NPN 5V 60V 50V
Q906	0TR387500AA	2SC3875S(ALY) NPN 5V 60V 50V
Q907	0TR387500AA	2SC3875S(ALY) NPN 5V 60V 50V
Q908	0TR387500AA	2SC3875S(ALY) NPN 5V 60V 50V
Q951	0TR387500AA	2SC3875S(ALY) NPN 5V 60V 50V
Q952	0TFFC10020A	FET,FQPF16N25C

DIODE

D1001	0DS226009AA	KDS226 1.2V 85V 300MA 2A
D1003	0DS226009AA	KDS226 1.2V 85V 300MA 2A
D1004	0DL233309AC	LED,Chip SAM2333
D101	0DRSD00241A	D15XB60-7000 600V 1.1V 1
D116	0DS226009AA	KDS226 1.2V 85V 300MA 2A
D118	0DS226009AA	KDS226 1.2V 85V 300MA 2A
D120	0DS226009AA	KDS226 1.2V 85V 300MA 2A
D121	0DS113379BA	1SS133 1200MV 90V 400MA
D121	0DS226009AA	KDS226 1.2V 85V 300MA 2A
D122	0DS113379BA	1SS133 1200MV 90V 400MA
D123	0DS113379BA	1SS133 1200MV 90V 400MA
D124	0DS113379BA	1SS133 1200MV 90V 400MA
D124	0DS226009AA	KDS226 1.2V 85V 300MA 2A
D125	0DRFJ00115A	ERA15-06 600V 1.1V 10A 4
D125	0DS226009AA	KDS226 1.2V 85V 300MA 2A
D126	0DS226009AA	KDS226 1.2V 85V 300MA 2A
D127	0DS226009AA	KDS226 1.2V 85V 300MA 2A
D128	0DS226009AA	KDS226 1.2V 85V 300MA 2A
D129	0DRSE00038A	SDC15 1.3V
D130	0DRSE00038A	SDC15 1.3V
D151	0DRSA00119A	SARS01 800V 1200MV 10UA
D152	0DRFJ00135A	ERA38-06 600V 2500MV 50U
D154	0DD140009AA	EK14 550MV 40V 1.5A - -
D202	0DR306000AA	SF30SC6 60V 630MV 10MA 2
D221	0DRSA00020A	FMB-G24H 550MV 40V 10A -
D251	0DRSA00251A	FMX-G12S 200V 980MV 100U
D252	0DS113379BA	1SS133 1200MV 90V 400MA
D261	0DRSA00251A	FMX-G12S 200V 980MV 100U
D262	0DS113379BA	1SS133 1200MV 90V 400MA
D271	0DR306000AA	SF30SC6 60V 630MV 10MA 2
D300	0DS226009AA	KDS226 1.2V 85V 300MA 2A
D301	0DS226009AA	KDS226 1.2V 85V 300MA 2A
D302	0DS226009AA	KDS226 1.2V 85V 300MA 2A
D303	0DS226009AA	KDS226 1.2V 85V 300MA 2A

LOCA. NO	PART NO	DESCRIPTION
D400	0DD184009AA	KDS184 KDS184 TP KEC - 8
D501	0DRFJ00125A	ERA15-10 1KV 1100MV 10UA
D502	0DRFJ00115A	ERA15-06 600V 1.1V 10A 4
D503	0DRFJ00135A	ERA38-06 600V 2500MV 50U
D504	0DRFJ00135A	ERA38-06 600V 2500MV 50U
D505	0DRSA00119A	SARS01 800V 1200MV 10UA
D506	0DRFJ00125A	ERA15-10 1KV 1100MV 10UA
D507	0DRFC00288A	SS14 500MV 40V 1A
D601	0DRNH00160A	30PDA60 600V 1V 10UA 100
D602	0DRSD00281A	SF10L60U 600V 3V 25UA 12
D603	0DRFJ00115A	ERA15-06 600V 1.1V 10A 4
D604	0DS113379BA	1SS133 1200MV 90V 400MA
D605	0DD400509BB	UF4005(52MM) 600V 1.7V 1
D606	0DS113379BA	1SS133 1200MV 90V 400MA
D607	0DD400509BB	UF4005(52MM) 600V 1.7V 1
D611	0DRSD00281A	SF10L60U 600V 3V 25UA 12
D700	0DD184009AA	KDS184 KDS184 TP KEC - 8
D703	0DS113379BA	1SS133 1200MV 90V 400MA
D704	0DS113379BA	1SS133 1200MV 90V 400MA
D750	0DL233309AC	LED,Chip SAM2333
D800	0DD184009AA	KDS184 KDS184 TP KEC - 8
D801	0DD184009AA	KDS184 KDS184 TP KEC - 8
D801	0DD100009AY	RG1C 1KV 3.3V 20UA 10A 1
D803	0DD400709CC	UF4007-1021 1KV 1700MV 1
D804	0DS141489AB	1N4148 1V 100V 150MA 500
D805	0DD400709CC	UF4007-1021 1KV 1700MV 1
D807	0DRFJ00115A	ERA15-06 600V 1.1V 10A 4
D808	0DRFC00288A	SS14 500MV 40V 1A
D851	0DRFC00345A	1N5408 1KV 1200MV 5UA 20
D852	0DD100009AY	RG1C 1KV 3.3V 20UA 10A 1
D853	0DRFC00288A	SS14 500MV 40V 1A
D854	0DS141489AB	1N4148 1V 100V 150MA 500
D855	0DRFC00345A	1N5408 1KV 1200MV 5UA 20
D856	0DRFJ00115A	ERA15-06 600V 1.1V 10A 4
D900	0DS226009AA	KDS226 1.2V 85V 300MA 2A
D901	0DRNH00151A	FSF10A60 600V 1800MV 30U
D902	0DS226009AA	KDS226 1.2V 85V 300MA 2A
D903	0DS226009AA	KDS226 1.2V 85V 300MA 2A
D905	0DD200009AF	RU2M 400V 1.2V 10UA 20A
D906	0DD200009AF	RU2M 400V 1.2V 10UA 20A
D907	0DD200009AF	RU2M 400V 1.2V 10UA 20A
D951	0DRSA00081A	FMC-G28SL 800V 3V 200UA
D952	0DRFJ00115A	ERA15-06 600V 1.1V 10A 4
D953	0DRFJ00115A	ERA15-06 600V 1.1V 10A 4
LD101	0DLAU0410AA	LED,DIP SAW5670
ZD1000	0DZKE00048A	Zener,KDZ8.2V 8.2V 7.7TO8.7V 2
ZD121	0DZ110009AD	Zener,MTZJ11B 11V 10.5TO11.05V
ZD151	0DZ200009AD	Zener,MTZJ20B 20V 18.63TO19.59
ZD252	0DZ680009BB	Zener,MTZJ6.8B 6.8V 6.49TO6.83
ZD300	0DR050008AA	SD05.TC - 6V 14.5V 24A 3
ZD301	0DR050008AA	SD05.TC - 6V 14.5V 24A 3
ZD303	0DR050008AA	SD05.TC - 6V 14.5V 24A 3

For Capacitor & Resistors, the characters at 2nd and 3rd digit in the P/No. means as follows;	CC, CX, CK, CN : Ceramic	RD : Carbon Film
	CQ : Polyester	RS : Metal Oxide Film
	CE : Electrolytic	RN : Metal Film
		RF : Fusible

LOCA. NO	PART NO	DESCRIPTION
ZD304	0DR050008AA	SD05.TC - 6V 14.5V 24A 3
ZD305	0DR050008AA	SD05.TC - 6V 14.5V 24A 3
ZD308	0DR050008AA	SD05.TC - 6V 14.5V 24A 3
ZD312	0DR050008AA	SD05.TC - 6V 14.5V 24A 3
ZD313	0DR050008AA	SD05.TC - 6V 14.5V 24A 3
ZD314	0DR050008AA	SD05.TC - 6V 14.5V 24A 3
ZD501	0DZ110009AD	Zener,MTZJ11B 11V 10.5TO11.05V
ZD502	0DZ200009AF	Zener,MTZJ22B 22V 20.64TO21.71
ZD503	0DZ200009AD	Zener,MTZJ20B 20V 18.63TO19.59
ZD601	0DZ200009AD	Zener,MTZJ20B 20V 18.63TO19.59
ZD802	0DZ150009AD	Zener,MTZJ15B 15V 13.89TO14.62
ZD852	0DZ150009AD	Zener,MTZJ15B 15V 13.89TO14.62

CAPACITOR

C1000	0CK104CK56A	0603B104K500CT 100nF 10% 50
C1001	0CE107WF6DC	MVK6.3TP16VC100M 100uF 20%
C1002	0CK104CK56A	0603B104K500CT 100nF 10% 50
C1003	0CE107WF6DC	MVK6.3TP16VC100M 100uF 20%
C1004	0CK104CK56A	0603B104K500CT 100nF 10% 50
C1006	0CK103CK56A	0603B103K500CT 10nF 10% 50V
C1007	0CE107WF6DC	MVK6.3TP16VC100M 100uF 20%
C1009	0CE107WF6DC	MVK6.3TP16VC100M 100uF 20%
C101	0CH5101K416	C2012C0G1H101JT 100pF 5% 50
C101	0CZZVSB015A	PCX2 337 11105 1uF 10% 275V
C1011	0CK103CK56A	0603B103K500CT 10nF 10% 50V
C1012	0CK104CK56A	0603B104K500CT 100nF 10% 50
C1013	0CK104CK56A	0603B104K500CT 100nF 10% 50
C1014	0CK104CK56A	0603B104K500CT 100nF 10% 50
C1015	0CK104CK56A	0603B104K500CT 100nF 10% 50
C1016	0CE477EJ618	KMG5.0TP35VB470M 470uF 20%
C1017	0CE477WF6DC	MVK10TP16VC470M 470uF 20% 1
C1018	0CE227WF6DC	MVK8.0TP16VC220M 220uF 20%
C1019	0CE477WF6DC	MVK10TP16VC470M 470uF 20% 1
C102	0CH5330K416	C2012C0G1H330JT 33pF 5% 50V
C1020	0CE477EJ618	KMG5.0TP35VB470M 470uF 20%
C1021	0CE227WF6DC	MVK8.0TP16VC220M 220uF 20%
C1022	0CK104CK56A	0603B104K500CT 100nF 10% 50
C1023	0CK104CK56A	0603B104K500CT 100nF 10% 50
C1024	0CK104CK56A	0603B104K500CT 100nF 10% 50
C1025	0CK104CK56A	0603B104K500CT 100nF 10% 50
C1026	0CK103CK56A	0603B103K500CT 10nF 10% 50V
C1027	0CK104CK56A	0603B104K500CT 100nF 10% 50
C1029	0CK103CK56A	0603B103K500CT 10nF 10% 50V
C103	0CE4763F618	ESF476M016T1A5E05G 47uF 20%
C103	0CKZTBU004E	DE2E3KX102MA5A 1nF 20% 250V
C1031	0CE107WF6DC	MVK6.3TP16VC100M 100uF 20%
C1036	0CK104CK56A	0603B104K500CT 100nF 10% 50
C1037	0CK104CK56A	0603B104K500CT 100nF 10% 50
C1038	0CE477WF6DC	MVK10TP16VC470M 470uF 20% 1
C1039	0CK103CK56A	0603B103K500CT 10nF 10% 50V
C104	0CE4763F618	ESF476M016T1A5E05G 47uF 20%
C104	0CKZTBU004E	DE2E3KX102MA5A 1nF 20% 250V

LOCA. NO	PART NO	DESCRIPTION
C1040	0CE476WF6DC	MVK6.3TP16VC47M 47uF 20% 16
C1043	0CK104CK56A	0603B104K500CT 100nF 10% 50
C1045	0CK104CK56A	0603B104K500CT 100nF 10% 50
C1046	0CE477WF6DC	MVK10TP16VC470M 470uF 20% 1
C1047	0CE107WF6DC	MVK6.3TP16VC100M 100uF 20%
C1048	0CE107WF6DC	MVK6.3TP16VC100M 100uF 20%
C105	0CE4763F618	ESF476M016T1A5E05G 47uF 20%
C105	0CBZTBU002B	PCX2 335 91645 0.47uF 20% 2
C1050	0CK104CK56A	0603B104K500CT 100nF 10% 50
C1051	0CK104CK56A	0603B104K500CT 100nF 10% 50
C1052	0CK104CK56A	0603B104K500CT 100nF 10% 50
C1054	0CK104CK56A	0603B104K500CT 100nF 10% 50
C1056	0CK103CK56A	0603B103K500CT 10nF 10% 50V
C1057	0CK103CK56A	0603B103K500CT 10nF 10% 50V
C1058	0CK103CK56A	0603B103K500CT 10nF 10% 50V
C1059	0CK104CK56A	0603B104K500CT 100nF 10% 50
C1061	0CK103CK56A	0603B103K500CT 10nF 10% 50V
C1063	0CK103CK56A	0603B103K500CT 10nF 10% 50V
C1064	0CE107WF6DC	MVK6.3TP16VC100M 100uF 20%
C1065	0CE107WF6DC	MVK6.3TP16VC100M 100uF 20%
C1066	0CE107WF6DC	MVK6.3TP16VC100M 100uF 20%
C1068	0CE107WF6DC	MVK6.3TP16VC100M 100uF 20%
C1070	0CE476WF6DC	MVK6.3TP16VC47M 47uF 20% 16
C1071	0CE227WF6DC	MVK8.0TP16VC220M 220uF 20%
C1072	0CK104CK56A	0603B104K500CT 100nF 10% 50
C1073	0CK103CK56A	0603B103K500CT 10nF 10% 50V
C1074	0CE107WF6DC	MVK6.3TP16VC100M 100uF 20%
C112	0CC102CK41A	C1608C0G1H102JT 1nF 5% 50V
C114	0CC102CK41A	C1608C0G1H102JT 1nF 5% 50V
C116	0CC102CK41A	C1608C0G1H102JT 1nF 5% 50V
C120	0CC102CK41A	C1608C0G1H102JT 1nF 5% 50V
C121	0CK224DK56A	CS2012X7R224K500NR 220nF 10
C122	0CK224DK56A	CS2012X7R224K500NR 220nF 10
C123	0CK224DK56A	CS2012X7R224K500NR 220nF 10
C124	0CK334DK56A	330nF 10% 50V X7R -55TO+125
C125	0CK224DK56A	CS2012X7R224K500NR 220nF 10
C126	0CK473DK56A	C2012X7R1H473KT 47nF 10% 50
C127	0CK334DK56A	330nF 10% 50V X7R -55TO+125
C128	0CH2103K666	0.01UF 50V 20% X7R 2012 R/T
C151	0CF1021Y45A	PUX63Y102JCF503 1n 5% 630V
C152	181-288X	PCMT 365 76684 680nF 5% 63V
C153	0CE2262K638	WL1H226M05011PA 22uF 20% 50
C154	0CH5331K416	0805N331J500LT 330pF 5% 50V
C155	0CK333DK56A	C2012X7R1H333KT 33nF 10% 50
C156	0CK222DK56A	CS2012X7R222K500NR 2.2nF 10
C157	181-288N	PCMT 365 86103 10nF 5% 100V
C159	0CC102CK41A	C1608C0G1H102JT 1nF 5% 50V
C160	0CE227SF6DC	220uF 20% 16V
C161	0CE227SF6DC	220uF 20% 16V
C162	0CC102CK41A	C1608C0G1H102JT 1nF 5% 50V
C163	0CK103CK56A	0603B103K500CT 10nF 10% 50V
C164	0CK103CK56A	0603B103K500CT 10nF 10% 50V

For Capacitor & Resistors, the characters at 2nd and 3rd digit in the P/No. means as follows;	CC, CX, CK, CN : Ceramic CQ : Polyester CE : Electrolytic	RD : Carbon Film RS : Metal Oxide Film RN : Metal Film RF : Fusible
--	---	--

LOCA. NO	PART NO	DESCRIPTION
C170	0CE106WH6DC	MVK5.0TP25VC10M 10uF 20% 25
C171	0CE106WH6DC	MVK5.0TP25VC10M 10uF 20% 25
C172	0CK682CK51A	C1608Y5P1H682KT 6.8nF 10% 5
C173	0CK682CK51A	C1608Y5P1H682KT 6.8nF 10% 5
C174	0CK682CK51A	C1608Y5P1H682KT 6.8nF 10% 5
C175	0CK682CK51A	C1608Y5P1H682KT 6.8nF 10% 5
C201	0CZZTAB003D	NXB10VB3300M 3300uF 20% 10V
C202	0CZZTAB003D	NXB10VB3300M 3300uF 20% 10V
C203	0CZZTAB003D	NXB10VB3300M 3300uF 20% 10V
C204	0CK474DK56A	UMK212BJ474KG-T 470nF 10% 5
C205	0CE1072D638	WL1A107M05011PA 100uF 20% 1
C210	181-091R	LRYM7102KHA 1nF 10% 1000V Y
C221	0CH2103K666	0.01UF 50V 20% X7R 2012 R/T
C222	0CH5221K416	0805N221J500LT 220pF 5% 50V
C223	0CE1072K638	WL1H107M0811MPG 100uF 20% 5
C224	0CK222DK56A	CS2012X7R222K500NR 2.2nF 10
C227	0CZZTAB003D	NXB10VB3300M 3300uF 20% 10V
C228	0CH5221K416	0805N221J500LT 220pF 5% 50V
C251	0CZZTAB003Q	WB1J687M16025BB 680uF 20% 6
C252	0CK222DK56A	CS2012X7R222K500NR 2.2nF 10
C253	0CH1223K566	0805B223K500CT 22nF 10% 50V
C254	0CH1223K566	0805B223K500CT 22nF 10% 50V
C255	0CZZTAB003T	WB1H107M0811MPG 100uF 20% 5
C256	181-091R	LRYM7102KHA 1nF 10% 1000V Y
C261	0CZZTAB003R	WB1H687M12025PL 680uF 20% 5
C262	0CE1072H638	WL1E107M6L011PA 100uF 20% 2
C263	181-091R	LRYM7102KHA 1nF 10% 1000V Y
C271	0CZZTAB003D	NXB10VB3300M 3300uF 20% 10V
C272	0CZZTAB003D	NXB10VB3300M 3300uF 20% 10V
C273	0CH3104K566	0805B104K500CT 100nF 10% 50
C274	0CH3104K566	0805B104K500CT 100nF 10% 50
C275	0CZZTAB003M	NXB/WB SYE / SWE 10V 1000UF
C276	181-091R	LRYM7102KHA 1nF 10% 1000V Y
C277	0CH3104K566	0805B104K500CT 100nF 10% 50
C281	0CZZTAB003D	NXB10VB3300M 3300uF 20% 10V
C282	0CZZTAB003D	NXB10VB3300M 3300uF 20% 10V
C283	0CZZTAB003D	NXB10VB3300M 3300uF 20% 10V
C284	0CH3104K566	0805B104K500CT 100nF 10% 50
C285	0CZZTAB003P	WB1A337M6L011PA 330uF 20% 1
C300	0CH5101K416	C2012C0G1H101JT 100pF 5% 50
C301	0CH5101K416	C2012C0G1H101JT 100pF 5% 50
C309	0CK103CK56A	0603B103K500CT 10nF 10% 50V
C310	0CK103CK56A	0603B103K500CT 10nF 10% 50V
C311	0CC470CK41A	C1608C0G1H470JT 47pF 5% 50V
C312	0CK104CK56A	0603B104K500CT 100nF 10% 50
C313	0CE476WF6DC	MVK6.3TP16VC47M 47uF 20% 16
C316	0CC120CK41A	C1608C0G1H120JT 12pF 5% 50V
C317	0CC120CK41A	C1608C0G1H120JT 12pF 5% 50V
C332	0CK104CK56A	0603B104K500CT 100nF 10% 50
C333	0CK104CK56A	0603B104K500CT 100nF 10% 50
C334	0CK104CK56A	0603B104K500CT 100nF 10% 50
C335	0CK104CK56A	0603B104K500CT 100nF 10% 50

LOCA. NO	PART NO	DESCRIPTION
C336	0CK104CK56A	0603B104K500CT 100nF 10% 50
C337	0CK104CK56A	0603B104K500CT 100nF 10% 50
C339	0CK104CK56A	0603B104K500CT 100nF 10% 50
C340	0CE107WF6DC	MVK6.3TP16VC100M 100uF 20%
C343	0CE476WF6DC	MVK6.3TP16VC47M 47uF 20% 16
C345	0CE226WF6DC	MVK5.0TP16VC22M 22uF 20% 16
C347	0CK104CF56A	0603B104K160CT 100nF 10% 16
C350	0CK103CK56A	0603B103K500CT 10nF 10% 50V
C351	0CK104CK56A	0603B104K500CT 100nF 10% 50
C352	0CK104CK56A	0603B104K500CT 100nF 10% 50
C400	0CK104CK56A	0603B104K500CT 100nF 10% 50
C401	0CE476WF6DC	MVK6.3TP16VC47M 47uF 20% 16
C406	0CK104CK56A	0603B104K500CT 100nF 10% 50
C407	0CK104CK56A	0603B104K500CT 100nF 10% 50
C408	0CK104CK56A	0603B104K500CT 100nF 10% 50
C409	0CK104CK56A	0603B104K500CT 100nF 10% 50
C410	0CK102CK56A	0603B102K500CT 1nF 10% 50V
C411	0CK102CK56A	0603B102K500CT 1nF 10% 50V
C412	0CK104CK56A	0603B104K500CT 100nF 10% 50
C413	0CK104CK56A	0603B104K500CT 100nF 10% 50
C414	0CK104CK56A	0603B104K500CT 100nF 10% 50
C415	0CK104CK56A	0603B104K500CT 100nF 10% 50
C416	0CK104CK56A	0603B104K500CT 100nF 10% 50
C417	0CK102CK56A	0603B102K500CT 1nF 10% 50V
C419	0CK104CK56A	0603B104K500CT 100nF 10% 50
C420	0CK102CK56A	0603B102K500CT 1nF 10% 50V
C421	0CK104CK56A	0603B104K500CT 100nF 10% 50
C429	0CK822CK46A	0603B822J500CT 8.2nF 5% 50V
C430	0CK823CF56A	0603B823K160CT 82nF 10% 16V
C500	0CE477WF6DC	MVK10TP16VC470M 470uF 20% 1
C502	0CE477WF6DC	MVK10TP16VC470M 470uF 20% 1
C502	0CK473DK56A	C2012X7R1H473KT 47nF 10% 50
C503	0CH1102K566	0805B102K500CT 1nF 10% 50V
C504	0CZZ9ST027A	WL1H106M05011PA 10uF 20% 50
C505	0CH3104K566	0805B104K500CT 100nF 10% 50
C506	0CZZTAB003S	WB1J476M0811MPG 47uF 20% 63
C507	0CK103CK56A	0603B103K500CT 10nF 10% 50V
C507	181-091R	LRYM7102KHA 1nF 10% 1000V Y
C508	0CK105DH56A	C2012X7R105KFT 1uF 10% 25V
C508	0CC270CK41A	C1608C0G1H270JT 27pF 5% 50V
C509	0CC270CK41A	C1608C0G1H270JT 27pF 5% 50V
C511	0CK103CK56A	0603B103K500CT 10nF 10% 50V
C512	0CC101CK41A	C1608C0G1H101JT 100pF 5% 50
C513	0CE477WF6DC	MVK10TP16VC470M 470uF 20% 1
C514	0CK273CK56A	0603B273K500CT 27nF 10% 50V
C515	0CK103CK56A	0603B103K500CT 10nF 10% 50V
C516	0CK104CK56A	0603B104K500CT 100nF 10% 50
C517	0CK273CK56A	0603B273K500CT 27nF 10% 50V
C517	0CK103CK56A	0603B103K500CT 10nF 10% 50V
C518	0CK104CK56A	0603B104K500CT 100nF 10% 50
C521	0CC271CK41A	C1608C0G1H271JT 270pF 5% 50
C522	0CE6862V610	KMF450VB68 68uF 20% 450V 62

For Capacitor & Resistors, the characters at 2nd and 3rd digit in the P/No. means as follows;

CC, CX, CK, CN : Ceramic	RD : Carbon Film
CQ : Polyester	RS : Metal Oxide Film
CE : Electrolytic	RN : Metal Film
	RF : Fusible

LOCA. NO	PART NO	DESCRIPTION
C525	0CE107WF6DC	MVK6.3TP16VC100M 100uF 20%
C601	0CF1051V560	1u 10% 450V MPE -40TO+85C -
C602	0CE277RV640	HE2W277M30040HB 270uF 20% 4
C603	0CE277RV640	HE2W277M30040HB 270uF 20% 4
C604	0CZZTAB003S	WB1J476M0811MPG 47uF 20% 63
C605	0CK474DK56A	UMK212BJ474KG-T 470nF 10% 5
C606	0CK222DK56A	CS2012X7R222K500NR 2.2nF 10
C607	0CK224DK56A	CS2012X7R224K500NR 220nF 10
C608	0CK105DH56A	C2012X7R105KFT 1uF 10% 25V
C609	0CK104CK56A	0603B104K500CT 100nF 10% 50
C609	0CH3104K566	0805B104K500CT 100nF 10% 50
C610	0CK104CK56A	0603B104K500CT 100nF 10% 50
C610	0CH1102K566	0805B102K500CT 1nF 10% 50V
C611	0CK104CK56A	0603B104K500CT 100nF 10% 50
C611	0CH1102K566	0805B102K500CT 1nF 10% 50V
C612	0CK104CK56A	0603B104K500CT 100nF 10% 50
C613	0CK104CK56A	0603B104K500CT 100nF 10% 50
C614	0CK104CK56A	0603B104K500CT 100nF 10% 50
C615	0CK104CK56A	0603B104K500CT 100nF 10% 50
C616	0CK104CK56A	0603B104K500CT 100nF 10% 50
C617	0CK104CK56A	0603B104K500CT 100nF 10% 50
C618	0CK104CK56A	0603B104K500CT 100nF 10% 50
C619	0CK104CK56A	0603B104K500CT 100nF 10% 50
C620	0CK104CK56A	0603B104K500CT 100nF 10% 50
C621	0CK104CK56A	0603B104K500CT 100nF 10% 50
C622	0CK104CK56A	0603B104K500CT 100nF 10% 50
C623	0CK104CK56A	0603B104K500CT 100nF 10% 50
C623	0CK222DK56A	CS2012X7R222K500NR 2.2nF 10
C624	0CK104CK56A	0603B104K500CT 100nF 10% 50
C625	0CK104CK56A	0603B104K500CT 100nF 10% 50
C626	0CK103CK56A	0603B103K500CT 10nF 10% 50V
C627	0CK474CH94A	0603F474Z250CT 470nF -20TO+
C628	0CK474CH94A	0603F474Z250CT 470nF -20TO+
C629	0CE475WJ6DC	MVK4.0TP35VC4.7M 4.7uF 20%
C630	0CK474CH94A	0603F474Z250CT 470nF -20TO+
C631	0CK474CH94A	0603F474Z250CT 470nF -20TO+
C632	0CK474CH94A	0603F474Z250CT 470nF -20TO+
C633	0CK103CK56A	0603B103K500CT 10nF 10% 50V
C634	0CK474CH94A	0603F474Z250CT 470nF -20TO+
C635	0CK474CH94A	0603F474Z250CT 470nF -20TO+
C636	0CK474CH94A	0603F474Z250CT 470nF -20TO+
C637	0CE335WK6D8	MVK4.0TP50VC3.3M 3.3uF 20%
C638	0CK104CK56A	0603B104K500CT 100nF 10% 50
C643	0CK332CK56A	C1608X7R1H332KT 3.3nF 10% 5
C645	0CK332CK56A	C1608X7R1H332KT 3.3nF 10% 5
C647	0CK332CK56A	C1608X7R1H332KT 3.3nF 10% 5
C648	0CK332CK56A	C1608X7R1H332KT 3.3nF 10% 5
C649	0CK104CK56A	0603B104K500CT 100nF 10% 50
C650	0CK682CK51A	C1608Y5P1H682KT 6.8nF 10% 5
C651	0CC560CK41A	C1608C0G1H560JT 56pF 5% 50V
C652	0CC560CK41A	C1608C0G1H560JT 56pF 5% 50V
C653	0CK682CK51A	C1608Y5P1H682KT 6.8nF 10% 5

LOCA. NO	PART NO	DESCRIPTION
C654	0CK103CK56A	0603B103K500CT 10nF 10% 50V
C655	0CC220CK41A	C1608C0G1H220JT 22pF 5% 50V
C657	0CE226WF6DC	MVK5.0TP16VC22M 22uF 20% 16
C658	0CE226WF6DC	MVK5.0TP16VC22M 22uF 20% 16
C659	0CE226WF6DC	MVK5.0TP16VC22M 22uF 20% 16
C660	0CE226WF6DC	MVK5.0TP16VC22M 22uF 20% 16
C661	0CK104CK56A	0603B104K500CT 100nF 10% 50
C662	0CK225DK94A	CL21F225ZBFNNNE 2.2uF -20TO
C663	0CK104CK56A	0603B104K500CT 100nF 10% 50
C664	0CK104CK56A	0603B104K500CT 100nF 10% 50
C665	0CK225DK94A	CL21F225ZBFNNNE 2.2uF -20TO
C666	0CK225DD66A	LMK212JB225MG-T 2.2uF 20% 1
C673	0CC220CK41A	C1608C0G1H220JT 22pF 5% 50V
C674	0CC220CK41A	C1608C0G1H220JT 22pF 5% 50V
C676	0CE226WF6DC	MVK5.0TP16VC22M 22uF 20% 16
C677	0CE226WF6DC	MVK5.0TP16VC22M 22uF 20% 16
C682	0CE226WF6DC	MVK5.0TP16VC22M 22uF 20% 16
C683	0CE226WF6DC	MVK5.0TP16VC22M 22uF 20% 16
C684	0CE226WF6DC	MVK5.0TP16VC22M 22uF 20% 16
C685	0CE226WF6DC	MVK5.0TP16VC22M 22uF 20% 16
C686	0CE226WF6DC	MVK5.0TP16VC22M 22uF 20% 16
C687	0CK104CK56A	0603B104K500CT 100nF 10% 50
C688	0CK104CK56A	0603B104K500CT 100nF 10% 50
C688	0CK104CK56A	0603B104K500CT 100nF 10% 50
C693	0CK104CK56A	0603B104K500CT 100nF 10% 50
C694	0CK104CK56A	0603B104K500CT 100nF 10% 50
C695	0CK104CK56A	0603B104K500CT 100nF 10% 50
C696	0CK104CK56A	0603B104K500CT 100nF 10% 50
C697	0CK104CK56A	0603B104K500CT 100nF 10% 50
C701	0CH1102K566	0805B102K500CT 1nF 10% 50V
C702	0CH1102K566	0805B102K500CT 1nF 10% 50V
C703	0CH1102K566	0805B102K500CT 1nF 10% 50V
C704	0CH1102K566	0805B102K500CT 1nF 10% 50V
C704	0CK104CK56A	0603B104K500CT 100nF 10% 50
C705	0CH1102K566	0805B102K500CT 1nF 10% 50V
C705	0CK104CK56A	0603B104K500CT 100nF 10% 50
C706	0CH1102K566	0805B102K500CT 1nF 10% 50V
C707	0CH1102K566	0805B102K500CT 1nF 10% 50V
C708	0CH1102K566	0805B102K500CT 1nF 10% 50V
C713	0CK104CK56A	0603B104K500CT 100nF 10% 50
C719	0CE226WF6DC	MVK5.0TP16VC22M 22uF 20% 16
C719	0CH3104K566	0805B104K500CT 100nF 10% 50
C720	0CH3104K566	0805B104K500CT 100nF 10% 50
C721	0CK105DH56A	C2012X7R105KFT 1uF 10% 25V
C721	0CK104CK56A	0603B104K500CT 100nF 10% 50
C722	0CH3104K566	0805B104K500CT 100nF 10% 50
C725	0CH3104K566	0805B104K500CT 100nF 10% 50
C726	0CK105DH56A	C2012X7R105KFT 1uF 10% 25V
C726	0CK104CK56A	0603B104K500CT 100nF 10% 50
C727	0CE226WF6DC	MVK5.0TP16VC22M 22uF 20% 16
C727	0CK105DH56A	C2012X7R105KFT 1uF 10% 25V
C728	0CH3104K566	0805B104K500CT 100nF 10% 50

For Capacitor & Resistors, the characters at 2nd and 3rd digit in the P/No. means as follows;	CC, CX, CK, CN : Ceramic CQ : Polyester CE : Electrolytic	RD : Carbon Film RS : Metal Oxide Film RN : Metal Film RF : Fusible
--	---	--

LOCA. NO	PART NO	DESCRIPTION
C729	0CH3104K566	0805B104K500CT 100nF 10% 50
C729	0CK104CK56A	0603B104K500CT 100nF 10% 50
C730	0CE1072D638	WL1A107M05011PA 100uF 20% 1
C733	0CE226WF6DC	MVK5.0TP16VC22M 22uF 20% 16
C735	0CK104CK56A	0603B104K500CT 100nF 10% 50
C739	0CK104CK56A	0603B104K500CT 100nF 10% 50
C743	0CE226WF6DC	MVK5.0TP16VC22M 22uF 20% 16
C744	0CE226WF6DC	MVK5.0TP16VC22M 22uF 20% 16
C749	0CK104CK56A	0603B104K500CT 100nF 10% 50
C750	0CK225DK94A	CL21F225ZBFNNE 2.2uF -20TO
C753	0CK104CK56A	0603B104K500CT 100nF 10% 50
C756	0CE476WF6DC	MVK6.3TP16VC47M 47uF 20% 16
C757	0CE106WH6DC	MVK5.0TP25VC10M 10uF 20% 25
C758	0CE476WF6DC	MVK6.3TP16VC47M 47uF 20% 16
C759	0CE476WF6DC	MVK6.3TP16VC47M 47uF 20% 16
C760	0CE476WF6DC	MVK6.3TP16VC47M 47uF 20% 16
C761	0CE476WF6DC	MVK6.3TP16VC47M 47uF 20% 16
C762	0CE476WF6DC	MVK6.3TP16VC47M 47uF 20% 16
C763	0CE476WF6DC	MVK6.3TP16VC47M 47uF 20% 16
C764	0CK103CK56A	0603B103K500CT 10nF 10% 50V
C764	0CK106EF56A	C3216X7R1C106KT 10uF 10% 16
C765	0CK106EF56A	C3216X7R1C106KT 10uF 10% 16
C766	0CK106EF56A	C3216X7R1C106KT 10uF 10% 16
C800	0CE107WF6DC	MVK6.3TP16VC100M 100uF 20%
C801	0CZZ9ST027A	WL1H106M05011PA 10uF 20% 50
C801	0CK103CK56A	0603B103K500CT 10nF 10% 50V
C802	0CE226WF6DC	MVK5.0TP16VC22M 22uF 20% 16
C802	181-091Q	LRYM5471KHA 470pF 10% 1000V
C803	0CK105CF94A	0603F105Z160CT 1uF -20TO+80
C803	0CH5121K416	C2012C0G1H121JT 120pF 5% 50
C804	0CK105CF94A	0603F105Z160CT 1uF -20TO+80
C805	0CK472DK56A	C2012X7R1H472KT 4.7nF 10% 5
C806	0CK105CF94A	0603F105Z160CT 1uF -20TO+80
C806	181-010K	PPN103J2JH 10nF 5% 630V PP
C807	0CK105CF94A	0603F105Z160CT 1uF -20TO+80
C807	0CH5221K416	0805N221J500LT 220pF 5% 50V
C816	0CK225DK94A	CL21F225ZBFNNE 2.2uF -20TO
C820	0CK225DK94A	CL21F225ZBFNNE 2.2uF -20TO
C821	0CK475EF67A	C3216X5R1C475MT 4.7uF 20% 1
C822	0CK475EF67A	C3216X5R1C475MT 4.7uF 20% 1
C823	0CK475EF67A	C3216X5R1C475MT 4.7uF 20% 1
C824	0CK475EF67A	C3216X5R1C475MT 4.7uF 20% 1
C825	0CK475EF67A	C3216X5R1C475MT 4.7uF 20% 1
C827	0CC471CK41A	C1608C0G1H471JT 470pF 5% 50
C828	0CE107WK6DC	MVK10TP50VC100M 100uF 20% 5
C829	0CC471CK41A	C1608C0G1H471JT 470pF 5% 50
C830	0CK103CK56A	0603B103K500CT 10nF 10% 50V
C831	0CK475EF67A	C3216X5R1C475MT 4.7uF 20% 1
C832	0CK475EF67A	C3216X5R1C475MT 4.7uF 20% 1
C833	0CK475EF67A	C3216X5R1C475MT 4.7uF 20% 1
C834	0CK475EF67A	C3216X5R1C475MT 4.7uF 20% 1
C835	0CK475EF67A	C3216X5R1C475MT 4.7uF 20% 1

LOCA. NO	PART NO	DESCRIPTION
C836	0CK104CK56A	0603B104K500CT 100nF 10% 50
C838	0CK104CK56A	0603B104K500CT 100nF 10% 50
C839	0CK104CK56A	0603B104K500CT 100nF 10% 50
C840	0CK102CK56A	0603B102K500CT 1nF 10% 50V
C842	0CK102CK56A	0603B102K500CT 1nF 10% 50V
C845	0CK474CH94A	0603F474Z250CT 470nF -20TO+
C848	0CK104CK56A	0603B104K500CT 100nF 10% 50
C849	0CK474CH94A	0603F474Z250CT 470nF -20TO+
C850	0CK104CK56A	0603B104K500CT 100nF 10% 50
C851	0CK105CF94A	0603F105Z160CT 1uF -20TO+80
C851	181-091Y	LRYM28681KXA 680pF 10% 2000
C852	0CH5471K416	C2012C0G1H471JT 470pF 5% 50
C853	0CK103CK56A	0603B103K500CT 10nF 10% 50V
C854	0CK224CF56A	0603B224K160CT 220nF 10% 16
C854	0CK472DK56A	C2012X7R1H472KT 4.7nF 10% 5
C855	0CZZ9ST027A	WL1H106M05011PA 10uF 20% 50
C855	0CK224CF56A	0603B224K160CT 220nF 10% 16
C856	0CK105CF94A	0603F105Z160CT 1uF -20TO+80
C856	181-038E	MPP 630V 0.047UF J
C857	0CK105CF94A	0603F105Z160CT 1uF -20TO+80
C857	0CH5101K416	C2012C0G1H101JT 100pF 5% 50
C858	0CK105CF94A	0603F105Z160CT 1uF -20TO+80
C858	0CH5471K416	C2012C0G1H471JT 470pF 5% 50
C859	0CK105CF94A	0603F105Z160CT 1uF -20TO+80
C860	0CE227WJ6DC	MVK10TP35VC220M 220uF 20% 3
C861	0CE227WJ6DC	MVK10TP35VC220M 220uF 20% 3
C862	0CK105CF94A	0603F105Z160CT 1uF -20TO+80
C863	0CE106WH6DC	MVK5.0TP25VC10M 10uF 20% 25
C864	0CK224CF56A	0603B224K160CT 220nF 10% 16
C865	0CK224CF56A	0603B224K160CT 220nF 10% 16
C866	0CK682CK51A	C1608Y5P1H682KT 6.8nF 10% 5
C867	0CK682CK51A	C1608Y5P1H682KT 6.8nF 10% 5
C868	0CE475WJ6DC	MVK4.0TP35VC4.7M 4.7uF 20%
C869	0CE475WJ6DC	MVK4.0TP35VC4.7M 4.7uF 20%
C871	0CC270CK41A	27pF 5% 50V
C901	0CZZTAB003U	PT2A477M1635MBB 470uF 20% 1
C902	0CK823DK56A	0805B823K500CT 82nF 10% 50V
C904	0CZZTAB003U	PT2A477M1635MBB 470uF 20% 1
C905	0CK105DH56A	C2012X7R105KFT 1uF 10% 25V
C906	0CK104CK56A	0603B104K500CT 100nF 10% 50
C906	181-308J	NPP630V472J10F 4.7nF 5% 630
C908	0CK474CH94A	0603F474Z250CT 470nF -20TO+
C912	0CE476WF6DC	MVK6.3TP16VC47M 47uF 20% 16
C915	0CK474CH94A	0603F474Z250CT 470nF -20TO+
C916	0CK104CK56A	0603B104K500CT 100nF 10% 50
C917	0CE477WF6DC	MVK10TP16VC470M 470uF 20% 1
C919	0CK104CK56A	0603B104K500CT 100nF 10% 50
C921	0CK103CK56A	0603B103K500CT 10nF 10% 50V
C922	0CE476WF6DC	MVK6.3TP16VC47M 47uF 20% 16
C926	0CK104CK56A	0603B104K500CT 100nF 10% 50
C927	0CK104CK56A	0603B104K500CT 100nF 10% 50
C928	0CK103CK56A	0603B103K500CT 10nF 10% 50V

For Capacitor & Resistors, the characters at 2nd and 3rd digit in the P/No. means as follows;

CC, CX, CK, CN : Ceramic	RD : Carbon Film
CQ : Polyester	RS : Metal Oxide Film
CE : Electrolytic	RN : Metal Film
	RF : Fusible

LOCA. NO	PART NO	DESCRIPTION
C929	0CK103CK56A	0603B103K500CT 10nF 10% 50V
C930	0CK104CK56A	0603B104K500CT 100nF 10% 50
C931	0CE476WF6DC	MVK6.3TP16VC47M 47uF 20% 16
C932	0CE476WF6DC	MVK6.3TP16VC47M 47uF 20% 16
C933	0CE477WF6DC	MVK10TP16VC470M 470uF 20% 1
C934	0CK104CK56A	0603B104K500CT 100nF 10% 50
C935	0CE477WF6DC	MVK10TP16VC470M 470uF 20% 1
C936	0CK104CK56A	0603B104K500CT 100nF 10% 50
C937	0CK104CK56A	0603B104K500CT 100nF 10% 50
C938	0CK104CK56A	0603B104K500CT 100nF 10% 50
C939	0CE477WF6DC	MVK10TP16VC470M 470uF 20% 1
C941	0CK103CK56A	0603B103K500CT 10nF 10% 50V
C942	0CK103CK56A	0603B103K500CT 10nF 10% 50V
C943	0CK103CK56A	0603B103K500CT 10nF 10% 50V
C945	0CK104CK56A	0603B104K500CT 100nF 10% 50
C946	0CE107WF6DC	MVK6.3TP16VC100M 100uF 20%
C946	0CE476WF6DC	MVK6.3TP16VC47M 47uF 20% 16
C947	0CE107WF6DC	MVK6.3TP16VC100M 100uF 20%
C947	0CE476WF6DC	MVK6.3TP16VC47M 47uF 20% 16
C948	0CE107WF6DC	MVK6.3TP16VC100M 100uF 20%
C948	0CE476WF6DC	MVK6.3TP16VC47M 47uF 20% 16
C949	0CK103CK56A	0603B103K500CT 10nF 10% 50V
C950	0CK104CK56A	0603B104K500CT 100nF 10% 50
C951	0CE477WF6DC	MVK10TP16VC470M 470uF 20% 1
C951	0CE827RR640	HE2E827M30040HB 820uF 20% 2
C952	0CE827RR640	HE2E827M30040HB 820uF 20% 2
C953	0CE477WF6DC	MVK10TP16VC470M 470uF 20% 1
C953	0CK105DH56A	C2012X7R105KFT 1uF 10% 25V
C954	181-288C	PCMT 365 26224 220nF 5% 100
C955	0CE107WF6DC	MVK6.3TP16VC100M 100uF 20%
C956	0CH3104K566	0805B104K500CT 100nF 10% 50
C957	0CK104CK56A	0603B104K500CT 100nF 10% 50
C957	181-091R	LRYM7102KHA 1nF 10% 1000V Y
C958	0CK104CK56A	0603B104K500CT 100nF 10% 50
C958	181-091R	LRYM7102KHA 1nF 10% 1000V Y
C959	0CK104CK56A	0603B104K500CT 100nF 10% 50
C960	0CK104CK56A	0603B104K500CT 100nF 10% 50
C961	0CK104CK56A	0603B104K500CT 100nF 10% 50
C962	0CK104CK56A	0603B104K500CT 100nF 10% 50
C963	0CK104CK56A	0603B104K500CT 100nF 10% 50
C964	0CK104CK56A	0603B104K500CT 100nF 10% 50
C965	0CK104CK56A	0603B104K500CT 100nF 10% 50
C967	0CK103CK56A	0603B103K500CT 10nF 10% 50V
C968	0CK103CK56A	0603B103K500CT 10nF 10% 50V
C969	0CK103CK56A	0603B103K500CT 10nF 10% 50V
C970	0CK103CK56A	0603B103K500CT 10nF 10% 50V
C972	0CK103CK56A	0603B103K500CT 10nF 10% 50V
C973	0CK103CK56A	0603B103K500CT 10nF 10% 50V
C974	0CK103CK56A	0603B103K500CT 10nF 10% 50V
C975	0CK103CK56A	0603B103K500CT 10nF 10% 50V
C976	0CK103CK56A	0603B103K500CT 10nF 10% 50V
C978	0CE476WF6DC	MVK6.3TP16VC47M 47uF 20% 16

LOCA. NO	PART NO	DESCRIPTION
C979	0CE476WF6DC	MVK6.3TP16VC47M 47uF 20% 16
C980	0CE476WF6DC	MVK6.3TP16VC47M 47uF 20% 16
C981	0CE476WF6DC	MVK6.3TP16VC47M 47uF 20% 16
C982	0CE476WF6DC	MVK6.3TP16VC47M 47uF 20% 16
C983	0CE476WF6DC	MVK6.3TP16VC47M 47uF 20% 16
C984	0CE476WF6DC	MVK6.3TP16VC47M 47uF 20% 16
C985	0CE476WF6DC	MVK6.3TP16VC47M 47uF 20% 16
C986	0CE476WF6DC	MVK6.3TP16VC47M 47uF 20% 16
C988	0CE106WH6DC	MVK5.0TP25VC10M 10uF 20% 25
C989	0CK103CK56A	0603B103K500CT 10nF 10% 50V
COIL & TRANSFORMER		
L1004	6140VB0004B	Coil,Choke LN-15A1 26uH
L101	0LC1032101A	Inductor,FI-C3216-103KJT 10UH 10% -
L102	0LCML00020G	Inductor,MLI-201209-3R3K 3.3UH 10%
L103	0LCML00020G	Inductor,MLI-201209-3R3K 3.3UH 10%
L104	0LCML00020G	Inductor,MLI-201209-3R3K 3.3UH 10%
L105	0LCML00020G	Inductor,MLI-201209-3R3K 3.3UH 10%
L106	0LCML00020G	Inductor,MLI-201209-3R3K 3.3UH 10%
L107	0LCML00020G	Inductor,MLI-201209-3R3K 3.3UH 10%
L108	0LCML00020G	Inductor,MLI-201209-3R3K 3.3UH 10%
L109	0LCML00020G	Inductor,MLI-201209-3R3K 3.3UH 10%
L118	0LCML00020G	Inductor,MLI-201209-3R3K 3.3UH 10%
L119	0LCML00020G	Inductor,MLI-201209-3R3K 3.3UH 10%
L120	0LCML00020G	Inductor,MLI-201209-3R3K 3.3UH 10%
L121	0LCML00020G	Inductor,MLI-201209-3R3K 3.3UH 10%
L201	61409B0013A	Coil,Choke A-PC10N 1.6uH AC250V 10A 1
L221	61409B0011A	Coil,Choke 2130KK0032A-F 50uH AC250V
L271	61409B0013A	Coil,Choke A-PC10N 1.6uH AC250V 10A 1
L503	0LCML00020G	Inductor,MLI-201209-3R3K 3.3UH 10%
L601	61409B0012A	Coil,Horizontal EER4242 320uH
L801	6140VR0008A	Inductor,SLF12575T-330M3R2 33UH 20%
L802	6140VR0008A	Inductor,SLF12575T-330M3R2 33UH 20%
L804	0LCML00020C	Inductor,MLI-201212-100K 10UH 10% -
L805	0LCML00020C	Inductor,MLI-201212-100K 10UH 10% -
L808	6140VR0008A	Inductor,SLF12575T-330M3R2 33UH 20%
L809	6140VR0008A	Inductor,SLF12575T-330M3R2 33UH 20%
L910	6140VB0004B	Coil,Choke LN-15A1 26uH
LF102	61409B0014A	Coil,Choke TC20N 100uH AC250V 10A 15X
LF103	61409B0014A	Coil,Choke TC20N 100uH AC250V 10A 15X
T112	61709MC013A	Transformer,Switching EER3541 310uH
T501	61709S0001A	Transformer,Linear EE2525 250V
T801	61709MC014A	Transformer,Switching EER3541 1.0mH
T901	61709MC015A	Transformer,Switching EER4242 390uH
CONNECTOR & WAFER		
C1	6631900012C	Harness,Single 2.50MM 10P
C10	68509A0004U	Cable,Assembly RCA R/A TO RCA R/A
C11	6850J00005C	Cable,Assembly GT121 HOUSING GT121
C2	6631900027E	Harness,Single 2.50MM 13P
C3	6631900048C	Harness,Single 2.00MM 4P
C4	6631900050C	Harness,Single 2.00MM 10P

For Capacitor & Resistors, the characters at 2nd and 3rd digit in the P/No. means as follows;	CC, CX, CK, CN : Ceramic CQ : Polyester CE : Electrolytic	RD : Carbon Film RS : Metal Oxide Film RN : Metal Film RF : Fusible
--	---	--

LOCA. NO	PART NO	DESCRIPTION
C5	6631900097G	Harness,Single 2.50MM 3P
C6	6631900098G	Harness,Single 2.50MM 4P
C7	6631900108B	Harness,Single 2.00MM 6P
C8	6631T39004D	Harness,Single 3.96MM 9P
C9	6631V39013N	Harness,Single 3.96MM 8P
GP1	366-167B	Conector,Wafer BW-501S 1P
GP2	366-167B	Conector,Wafer BW-501S 1P
GP3	366-167B	Conector,Wafer BW-501S 1P
GP4	366-167B	Conector,Wafer BW-501S 1P
GP5	366-167A	Conector,Wafer BW-501S 1P
GP6	366-167A	Conector,Wafer BW-501S 1P
GP7	366-167A	Conector,Wafer BW-501S 1P
GP8	366-167A	Conector,Wafer BW-501S 1P
JK102	6612J00042F	Conector,RF UCT-EX-061
JK303	6630G70016A	Conector,DSUB 15P 2.29MM
JK304	6630G70017A	Conector,DSUB 9P 2.77MM
P100	6602T20009J	Conector,Wafer SMAW200-10P
P1001	6602T25008J	Conector,Wafer SMW250-10P
P101	6602T20009C	Conector,Wafer SMAW200-04P
P101	6602T20009C	Conector,Wafer SMAW200-04P
P300	6602T20009E	Conector,Wafer SMAW200-06P
P300	6602T20009E	Conector,Wafer SMAW200-06P
P301	6602T20008J	Conector,Wafer SMW200-10P
P303	366-932B	Conector,Wafer 3P 2.50MM
P601	6602T12007D	Conector,Wafer GT121-31P-TD
P800	6602T25008M	Conector,Wafer SMW250-13P
P801	6602T25008C	Conector,Wafer SMW250-04P
P802	6602T25008J	Conector,Wafer SMW250-10P
P802	6602T25008B	Conector,Wafer SMW250-03P
P803	6602T25008L	Conector,Wafer SMW250-12P
P811	6630AQ9008G	Conector,Wafer YW396-08V 8P
P812	6630V90224A	Conector,Wafer YW396-09V 9P
P900	6602T25008M	Conector,Wafer SMW250-13P
SC101	6602V39002A	Conector,Wafer YW396-03AV 2P
JACK		
JK103	6612J10031A	Jack,RCA PPJ209-02 14.0MM
JK104	6612J10031A	Jack,RCA PPJ209-02 14.0MM
JK105	6612J10006M	Jack,RCA PPJ150-09 14.0MM
JK106	6612F00024C	Jack,DIN PSJ014-01 4P
JK300	6612F00099A	Jack,Phone PEJ024-01 1P 4P
JK300	6612J10003X	Jack,RCA PMJ6054-39 14.0MM
JK301	6612F00099A	Jack,Phone PEJ024-01 1P 4P
JK302	6612F00099A	Jack,Phone PEJ024-01 1P 4P
JK400	6612B00015B	Jack,DIN DC1R019WDH
JK800	6612J10043A	Jack,RCA RCA-1302A-54G
RESISTOR		
AR600	0RJ0000C687	RCA86TRJ0000 0OHM 5% 1/16W
AR601	0RJ0000C687	RCA86TRJ0000 0OHM 5% 1/16W
AR602	0RJ0000C687	RCA86TRJ0000 0OHM 5% 1/16W
C644	0RJ0000D677	MCR03EZIPJ000 0OHM 5% 1/10W

LOCA. NO	PART NO	DESCRIPTION
C646	0RJ0000D677	MCR03EZIPJ000 0OHM 5% 1/10W
R1000	0RJ1201D677	MCR03EZIPJ122 1.2KOHM 5% 1/1
R1001	0RJ0752D677	MCR03EZIPJ750 75OHM 5% 1/10W
R1002	0RJ0752D677	MCR03EZIPJ750 75OHM 5% 1/10W
R1003	0RJ1002D677	MCR03EZIPJ103 10KOHM 5% 1/10
R1008	0RJ0000D677	MCR03EZIPJ000 0OHM 5% 1/10W
R101	0RC4703A609	PRM92T1J470K 470KOHM 5% 1/2
R101	0RH9101D622	MCR10EZHJ912 9.1KOHM 5% 1/8
R101	0RH0000D622	MCR10EZHJ000 0OHM 5% 1/8W 2
R1010	0RJ0000D677	MCR03EZIPJ000 0OHM 5% 1/10W
R102	0RH3301D622	MCR10EZHJ332 3.3KOHM 5% 1/8
R102	0RH0000D622	MCR10EZHJ000 0OHM 5% 1/8W 2
R103	0RH1101D622	MCR10EZHJ112 1.1KOHM 5% 1/8
R103	0RH0000D622	MCR10EZHJ000 0OHM 5% 1/8W 2
R104	0RH0000D622	MCR10EZHJ000 0OHM 5% 1/8W 2
R104	0RH5600D622	MCR10EZHJ561 560OHM 5% 1/8W
R105	0RH9101D622	MCR10EZHJ912 9.1KOHM 5% 1/8
R105	0RH6801D622	MCR10EZHJ682 6.8KOHM 5% 1/8
R106	0RH3301D622	MCR10EZHJ332 3.3KOHM 5% 1/8
R106	0RH0000D622	MCR10EZHJ000 0OHM 5% 1/8W 2
R107	0RH1101D622	MCR10EZHJ112 1.1KOHM 5% 1/8
R107	0RH0000D622	MCR10EZHJ000 0OHM 5% 1/8W 2
R108	0RH0000D622	MCR10EZHJ000 0OHM 5% 1/8W 2
R108	0RH3901D622	MCR10EZHJ392 3.9KOHM 5% 1/8
R109	0RH0000D622	MCR10EZHJ000 0OHM 5% 1/8W 2
R111	0RH1501D622	MCR10EZHJ152 1.5KOHM 5% 1/8
R112	0RH1501D622	MCR10EZHJ152 1.5KOHM 5% 1/8
R117	0RJ2203D677	MCR03EZIPJ224 220KOHM 5% 1/1
R119	0RJ2203D677	MCR03EZIPJ224 220KOHM 5% 1/1
R121	0RJ2203D677	MCR03EZIPJ224 220KOHM 5% 1/1
R122	0RH4701D622	MCR10EZHJ472 4.7KOHM 5% 1/8
R123	0RH3903D622	MCR10EZHJ394 390KOHM 5% 1/8
R123	0RJ2203D677	MCR03EZIPJ224 220KOHM 5% 1/1
R124	0RH4701D622	MCR10EZHJ472 4.7KOHM 5% 1/8
R125	0RH2703D622	MCR10EZHJ274 270KOHM 5% 1/8
R126	0RH1803D622	MCR10EZHJ184 180KOHM 5% 1/8
R127	0RH2202D422	MCR10EZHJ223 22KOHM 1% 1/8W
R128	0RH2001D622	MCR10EZHJ202 2KOHM 5% 1/8W
R129	0RH1002D422	MCR10EZHJ103 10KOHM 1% 1/8W
R129	0RJ2203D677	MCR03EZIPJ224 220KOHM 5% 1/1
R130	0RH2703D622	MCR10EZHJ274 270KOHM 5% 1/8
R130	0RJ4703D677	MCR03EZIPJ474 470KOHM 5% 1/1
R131	0RH4701D622	MCR10EZHJ472 4.7KOHM 5% 1/8
R132	0RH4701D622	MCR10EZHJ472 4.7KOHM 5% 1/8
R132	0RJ2203D677	MCR03EZIPJ224 220KOHM 5% 1/1
R133	0RH4701D622	MCR10EZHJ472 4.7KOHM 5% 1/8
R133	0RJ4703D677	MCR03EZIPJ474 470KOHM 5% 1/1
R134	0RH4703D622	MCR10EZHJ474 470KOHM 5% 1/8
R134	0RJ2203D677	MCR03EZIPJ224 220KOHM 5% 1/1
R135	0RH2001D622	MCR10EZHJ202 2KOHM 5% 1/8W
R135	0RJ4703D677	MCR03EZIPJ474 470KOHM 5% 1/1
R136	0RH3302D622	MCR10EZHJ333 33KOHM 5% 1/8W

For Capacitor & Resistors, the characters at 2nd and 3rd digit in the P/No. means as follows;	CC, CX, CK, CN : Ceramic	RD : Carbon Film
	CQ : Polyester	RS : Metal Oxide Film
	CE : Electrolytic	RN : Metal Film
		RF : Fusible

LOCA. NO	PART NO	DESCRIPTION
R136	0RJ2203D677	MCR03EZPJ224 220KOHM 5% 1/1
R137	0RH3903D622	MCR10EZHJ394 390KOHM 5% 1/8
R137	0RJ4703D677	MCR03EZPJ474 470KOHM 5% 1/1
R138	0RH1203D622	MCR10EZHJ124 120KOHM 5% 1/8
R139	0RH5602D622	MCR10EZHJ563 56KOHM 5% 1/8W
R140	0RJ6802E472	MCR10EZHJ6802 68KOHM 1% 1/8
R141	0RJ1503E472	MCR10EZHJ1503 150KOHM 1% 1/8
R141	0RJ4701D677	MCR03EZPJ472 4.7KOHM 5% 1/1
R141	0RJ0752D677	MCR03EZPJ750 750OHM 5% 1/10W
R142	0RH3903D622	MCR10EZHJ394 390KOHM 5% 1/8
R143	0RH4701D422	MCR10EZHJ472 4.7KOHM 1% 1/8
R144	0RH2703D622	MCR10EZHJ274 270KOHM 5% 1/8
R145	0RH3003D622	MCR10EZHJ304 300KOHM 5% 1/8
R149	0RJ2000D677	MCR03EZPJ201 200OHM 5% 1/10
R151	0RX1003K665	RSD02F4J100K 100KOHM 5% 2W
R152	0RB0100J609	PRW01T10R10J 0.1OHM 5% 1W 9
R153	0RH2202D622	MCR10EZHJ223 22KOHM 5% 1/8W
R154	0RH8201D622	MCR10EZHJ822 8.2KOHM 5% 1/8
R155	0RH4700D622	MCR10EZHJ471 470OHM 5% 1/8W
R157	0RH1002D622	MCR10EZHJ103 10KOHM 5% 1/8W
R158	0RD0221Q609	RDM94T1J2R20 2.2OHM 5% 1/4W
R159	0RD0222Q609	RDM94T1J2R0 22OHM 5% 1/4W
R160	0RX0472L665	RSD03T447R0J 470OHM 5% 3W 15
R165	0RJ0822D677	MCR03EZPJ820 820OHM 5% 1/10W
R166	0RJ0822D677	MCR03EZPJ820 820OHM 5% 1/10W
R171	0RJ0822D677	MCR03EZPJ820 820OHM 5% 1/10W
R172	0RJ0822D677	MCR03EZPJ820 820OHM 5% 1/10W
R174	0RJ2203D677	MCR03EZPJ224 220KOHM 5% 1/1
R175	0RJ2203D677	MCR03EZPJ224 220KOHM 5% 1/1
R176	0RJ0752D677	MCR03EZPJ750 750OHM 5% 1/10W
R177	0RJ0752D677	MCR03EZPJ750 750OHM 5% 1/10W
R178	0RJ0752D677	MCR03EZPJ750 750OHM 5% 1/10W
R179	0RJ2203D677	MCR03EZPJ224 220KOHM 5% 1/1
R180	0RJ2203D677	MCR03EZPJ224 220KOHM 5% 1/1
R181	0RJ0752D677	MCR03EZPJ750 750OHM 5% 1/10W
R182	0RJ0752D677	MCR03EZPJ750 750OHM 5% 1/10W
R183	0RJ0752D677	MCR03EZPJ750 750OHM 5% 1/10W
R184	0RJ0752D677	MCR03EZPJ750 750OHM 5% 1/10W
R185	0RJ2203D677	MCR03EZPJ224 220KOHM 5% 1/1
R186	0RJ1001D677	MCR03EZPJ102 1KOHM 5% 1/10W
R187	0RJ1001D677	MCR03EZPJ102 1KOHM 5% 1/10W
R188	0RJ0000D677	MCR03EZPJ000 0OHM 5% 1/10W
R189	0RJ0000D677	MCR03EZPJ000 0OHM 5% 1/10W
R190	0RJ0000D677	MCR03EZPJ000 0OHM 5% 1/10W
R191	0RJ0752D677	MCR03EZPJ750 750OHM 5% 1/10W
R192	0RJ1001D677	MCR03EZPJ102 1KOHM 5% 1/10W
R193	0RJ1001D677	MCR03EZPJ102 1KOHM 5% 1/10W
R194	0RJ0000D677	MCR03EZPJ000 0OHM 5% 1/10W
R195	0RJ0000D677	MCR03EZPJ000 0OHM 5% 1/10W
R196	0RJ0000D677	MCR03EZPJ000 0OHM 5% 1/10W
R197	0RJ2203D677	MCR03EZPJ224 220KOHM 5% 1/1
R198	0RJ0752D677	MCR03EZPJ750 750OHM 5% 1/10W

LOCA. NO	PART NO	DESCRIPTION
R199	0RJ0752D677	MCR03EZPJ750 750OHM 5% 1/10W
R200	0RJ0000D677	MCR03EZPJ000 0OHM 5% 1/10W
R201	0RH1001D622	MCR10EZHJ102 1KOHM 5% 1/8W
R201	0RJ1002D677	MCR03EZPJ103 10KOHM 5% 1/10
R202	0RH2700D622	MCR10EZHJ271 270OHM 5% 1/8W
R204	0RH4701D622	MCR10EZHJ472 4.7KOHM 5% 1/8
R204	0RJ1002D677	MCR03EZPJ103 10KOHM 5% 1/10
R205	0RH3301D422	MCR10EZHJ332 3.3KOHM 1% 1/8
R206	0RJ0222E421	MCR10EZHJ22R0 22OHM 1% 1/8W
R206	0RJ1002D677	MCR03EZPJ103 10KOHM 5% 1/10
R207	0RH3301D422	MCR10EZHJ332 3.3KOHM 1% 1/8
R208	0RJ0000D677	MCR03EZPJ000 0OHM 5% 1/10W
R209	0RJ0000D677	MCR03EZPJ000 0OHM 5% 1/10W
R210	0RJ4703D677	MCR03EZPJ474 470KOHM 5% 1/1
R211	0RJ4703D677	MCR03EZPJ474 470KOHM 5% 1/1
R212	0RJ2203D677	MCR03EZPJ224 220KOHM 5% 1/1
R213	0RJ2203D677	MCR03EZPJ224 220KOHM 5% 1/1
R213	0RX0222J618	RSD01R022R0J 22OHM 5% 1W 9.
R214	0RJ0000D677	MCR03EZPJ000 0OHM 5% 1/10W
R215	0RJ0000D677	MCR03EZPJ000 0OHM 5% 1/10W
R217	0RJ1001D677	MCR03EZPJ102 1KOHM 5% 1/10W
R218	0RJ1001D677	MCR03EZPJ102 1KOHM 5% 1/10W
R219	0RJ2001D677	MCR03EZPJ202 2KOHM 5% 1/10W
R220	0RJ2001D677	MCR03EZPJ202 2KOHM 5% 1/10W
R221	0RH4702D622	MCR10EZHJ473 47KOHM 5% 1/8W
R222	0RJ1001D677	MCR03EZPJ102 1KOHM 5% 1/10W
R222	0RH0000D622	MCR10EZHJ000 0OHM 5% 1/8W 2
R223	0RJ1001D677	MCR03EZPJ102 1KOHM 5% 1/10W
R223	0RH1001D422	MCR10EZHJ102 1KOHM 1% 1/8W
R224	0RJ1001D677	MCR03EZPJ102 1KOHM 5% 1/10W
R224	0RJ6800E472	MCR10EZHJ681 680OHM 1% 1/8W
R225	0RJ1001D677	MCR03EZPJ102 1KOHM 5% 1/10W
R226	0RJ4701D677	MCR03EZPJ472 4.7KOHM 5% 1/1
R226	0RH2201D422	MCR10EZHJ222 2.2KOHM 1% 1/8
R227	0RJ4701D677	MCR03EZPJ472 4.7KOHM 5% 1/1
R227	0RH1001D422	MCR10EZHJ102 1KOHM 1% 1/8W
R228	0RJ4701D677	MCR03EZPJ472 4.7KOHM 5% 1/1
R228	0RS0222K607	RSD02T3J22R0 22OHM 5% 2W 12
R229	0RD0102Q609	RDM94T1J10R0 10OHM 5% 1/4W
R229	0RJ4701D677	MCR03EZPJ472 4.7KOHM 5% 1/1
R241	0RX0472J618	RSD01R047R0J 470OHM 5% 1W 9.
R251	0RH1002D622	MCR10EZHJ103 10KOHM 5% 1/8W
R252	0RH1302D622	MCR10EZHJ133 13KOHM 5% 1/8W
R252	0RH1502D622	MCR10EZHJ153 15KOHM 5% 1/8W
R253	0RH5602D622	MCR10EZHJ563 56KOHM 5% 1/8W
R254	0RH2702D622	MCR10EZHJ273 27KOHM 5% 1/8W
R255	0RH1202D622	MCR10EZHJ123 12KOHM 5% 1/8W
R256	0RH4703D622	MCR10EZHJ474 470KOHM 5% 1/8
R257	0RH1501D422	MCR10EZHJ152 1.5KOHM 1% 1/8
R258	0RH1002D422	MCR10EZHJ103 10KOHM 1% 1/8W
R259	0RJ6801E472	RC98TRF6K80 6.8KOHM 1% 1/8W
R260	0RS2201K607	RSD02T3J2K20 2.2KOHM 5% 2W

For Capacitor & Resistors, the characters at 2nd and 3rd digit in the P/No. means as follows;	CC, CX, CK, CN : Ceramic CQ : Polyester CE : Electrolytic	RD : Carbon Film RS : Metal Oxide Film RN : Metal Film RF : Fusible
--	---	--

LOCA. NO	PART NO	DESCRIPTION
R261	0RH4701D422	MCR10EZH472 4.7KOHM 1% 1/8
R262	0RX0102J618	RSD01R010R0J 10OHM 5% 1W 9.
R263	0RS1001K607	RSD02T3J1K00 1KOHM 5% 2W 12
R271	0RH3900D622	MCR10EZHJ391 390OHM 5% 1/8W
R272	0RH1001D622	MCR10EZHJ102 1KOHM 5% 1/8W
R273	0RH2701D622	MCR10EZHJ272 2.7KOHM 5% 1/8
R274	0RH1001D622	MCR10EZHJ102 1KOHM 5% 1/8W
R275	0RH2201D422	MCR10EZHJ222 2.2KOHM 1% 1/8
R276	0RJ3900E472	MCR10EZHJ390 390OHM 1% 1/
R277	0RH2701D422	MCR10EZHJ272 2.7KOHM 1% 1/8
R278	0RX0222J618	RSD01R022R0J 22OHM 5% 1W 9.
R281	0RH1001D622	MCR10EZHJ102 1KOHM 5% 1/8W
R282	0RH2701D422	MCR10EZHJ272 2.7KOHM 1% 1/8
R283	0RJ0102E472	MCR10EZHJ100 10OHM 1% 1/8W
R284	0RH2701D422	MCR10EZHJ272 2.7KOHM 1% 1/8
R285	0RD4701F609	RD-96T1J4K70 4.7KOHM 5% 1/6
R300	0RH2203D622	MCR10EZHJ224 220KOHM 5% 1/8
R300	0RJ0000D677	MCR03EZPJ000 0OHM 5% 1/10W
R301	0RH2203D622	MCR10EZHJ224 220KOHM 5% 1/8
R301	0RJ0000D677	MCR03EZPJ000 0OHM 5% 1/10W
R302	0RH0752D622	MCR10EZHJ750 75OHM 5% 1/8W
R302	0RJ0000D677	MCR03EZPJ000 0OHM 5% 1/10W
R303	0RH4700D622	MCR10EZHJ471 470OHM 5% 1/8W
R303	0RJ2203D677	MCR03EZPJ224 220KOHM 5% 1/1
R304	0RH4700D622	MCR10EZHJ471 470OHM 5% 1/8W
R304	0RJ2203D677	MCR03EZPJ224 220KOHM 5% 1/1
R305	0RH0000D622	MCR10EZHJ000 0OHM 5% 1/8W 2
R306	0RJ1001D677	MCR03EZPJ102 1KOHM 5% 1/10W
R307	0RJ0752D677	MCR03EZPJ750 75OHM 5% 1/10W
R308	0RJ1002D677	MCR03EZPJ103 10KOHM 5% 1/10
R309	0RJ0000D677	MCR03EZPJ000 0OHM 5% 1/10W
R310	0RJ1001D677	MCR03EZPJ102 1KOHM 5% 1/10W
R311	0RJ1001D677	MCR03EZPJ102 1KOHM 5% 1/10W
R312	0RJ0000D677	MCR03EZPJ000 0OHM 5% 1/10W
R313	0RJ2001D677	MCR03EZPJ202 2KOHM 5% 1/10W
R314	0RJ0000D677	MCR03EZPJ000 0OHM 5% 1/10W
R314	0RJ4700D677	MCR03EZPJ471 470OHM 5% 1/10
R315	0RJ1002D677	MCR03EZPJ103 10KOHM 5% 1/10
R316	0RJ0752D677	MCR03EZPJ750 75OHM 5% 1/10W
R317	0RJ0000D677	MCR03EZPJ000 0OHM 5% 1/10W
R318	0RJ1000D677	MCR03EZPJ101 100OHM 5% 1/10
R319	0RJ1000D677	MCR03EZPJ101 100OHM 5% 1/10
R320	0RJ0752D677	MCR03EZPJ750 75OHM 5% 1/10W
R321	0RJ4701D677	MCR03EZPJ472 4.7KOHM 5% 1/1
R322	0RJ4701D677	MCR03EZPJ472 4.7KOHM 5% 1/1
R323	0RJ1002D677	MCR03EZPJ103 10KOHM 5% 1/10
R323	0RJ0000D677	MCR03EZPJ000 0OHM 5% 1/10W
R324	0RJ2001D677	MCR03EZPJ202 2KOHM 5% 1/10W
R326	0RJ0000D677	MCR03EZPJ000 0OHM 5% 1/10W
R327	0RJ0000D677	MCR03EZPJ000 0OHM 5% 1/10W
R328	0RJ0000D677	MCR03EZPJ000 0OHM 5% 1/10W
R329	0RJ0000D677	MCR03EZPJ000 0OHM 5% 1/10W

LOCA. NO	PART NO	DESCRIPTION
R330	0RJ1001D677	MCR03EZPJ102 1KOHM 5% 1/10W
R331	0RJ0000D677	MCR03EZPJ000 0OHM 5% 1/10W
R332	0RJ1001D677	MCR03EZPJ102 1KOHM 5% 1/10W
R333	0RJ0000D677	MCR03EZPJ000 0OHM 5% 1/10W
R334	0RJ0000D677	MCR03EZPJ000 0OHM 5% 1/10W
R335	0RJ0000D677	MCR03EZPJ000 0OHM 5% 1/10W
R338	0RJ1000D677	MCR03EZPJ101 100OHM 5% 1/10
R339	0RJ1000D677	MCR03EZPJ101 100OHM 5% 1/10
R343	0RJ2002D677	MCR03EZPJ203. 20KOHM 5% 1/1
R344	0RJ2002D677	MCR03EZPJ203. 20KOHM 5% 1/1
R345	0RJ1000D677	MCR03EZPJ101 100OHM 5% 1/10
R346	0RJ1000D677	MCR03EZPJ101 100OHM 5% 1/10
R347	0RJ3001D677	MCR03EZPJ302 3KOHM 5% 1/10W
R348	0RJ3001D677	MCR03EZPJ302 3KOHM 5% 1/10W
R349	0RJ2202D677	MCR03EZPJ223 22KOHM 5% 1/10
R350	0RJ2202D677	MCR03EZPJ223 22KOHM 5% 1/10
R351	0RJ0000D677	MCR03EZPJ000 0OHM 5% 1/10W
R352	0RJ1000D677	MCR03EZPJ101 100OHM 5% 1/10W
R355	0RJ4700D677	MCR03EZPJ471 470OHM 5% 1/10
R358	0RJ0000D677	MCR03EZPJ000 0OHM 5% 1/10W
R360	0RJ0000D677	MCR03EZPJ000 0OHM 5% 1/10W
R361	0RJ1000D677	MCR03EZPJ101 100OHM 5% 1/10
R362	0RJ1000D677	MCR03EZPJ101 100OHM 5% 1/10
R367	0RJ1000D677	MCR03EZPJ101 100OHM 5% 1/10
R378	0RJ0000D677	MCR03EZPJ000 0OHM 5% 1/10W
R379	0RJ0000D677	MCR03EZPJ000 0OHM 5% 1/10W
R380	0RJ0000D677	MCR03EZPJ000 0OHM 5% 1/10W
R381	0RJ0000D677	MCR03EZPJ000 0OHM 5% 1/10W
R382	0RJ0000D677	MCR03EZPJ000 0OHM 5% 1/10W
R383	0RJ0000D677	MCR03EZPJ000 0OHM 5% 1/10W
R384	0RJ4701D677	MCR03EZPJ472 4.7KOHM 5% 1/1
R384	0RJ1000D677	MCR03EZPJ101 100OHM 5% 1/10
R385	0RJ1002D677	MCR03EZPJ103 10KOHM 5% 1/10
R386	0RJ0000D677	MCR03EZPJ000 0OHM 5% 1/10W
R387	0RJ0000D677	MCR03EZPJ000 0OHM 5% 1/10W
R388	0RJ0000D677	MCR03EZPJ000 0OHM 5% 1/10W
R389	0RJ4700D677	MCR03EZPJ471 470OHM 5% 1/10
R390	0RJ0000D677	MCR03EZPJ000 0OHM 5% 1/10W
R391	0RJ0000D677	MCR03EZPJ000 0OHM 5% 1/10W
R401	0RJ0000D677	MCR03EZPJ000 0OHM 5% 1/10W
R402	0RJ1002D677	MCR03EZPJ103 10KOHM 5% 1/10
R404	0RJ1001D677	MCR03EZPJ102 1KOHM 5% 1/10W
R405	0RJ1001D677	MCR03EZPJ102 1KOHM 5% 1/10W
R406	0RJ1000D677	MCR03EZPJ101 100OHM 5% 1/10
R407	0RJ1000D677	MCR03EZPJ101 100OHM 5% 1/10
R417	0RJ4702D677	MCR03EZPJ473 47KOHM 5% 1/10
R418	0RJ4702D677	MCR03EZPJ473 47KOHM 5% 1/10
R421	0RJ1000D677	MCR03EZPJ101 100OHM 5% 1/10
R422	0RJ1000D677	MCR03EZPJ101 100OHM 5% 1/10
R423	0RJ1002D677	MCR03EZPJ103 10KOHM 5% 1/10
R424	0RJ1002D677	MCR03EZPJ103 10KOHM 5% 1/10
R425	0RJ4990D477	MCR03EZPF4990 499OHM 1% 1/1

For Capacitor & Resistors, the characters at 2nd and 3rd digit in the P/No. means as follows;

CC, CX, CK, CN : Ceramic	RD : Carbon Film
CQ : Polyester	RS : Metal Oxide Film
CE : Electrolytic	RN : Metal Film
	RF : Fusible

LOCA. NO	PART NO	DESCRIPTION
R426	0RJ0222D677	MCR03EZPJ220 220OHM 5% 1/10W
R427	0RJ0222D677	MCR03EZPJ220 220OHM 5% 1/10W
R428	0RJ0222D677	MCR03EZPJ220 220OHM 5% 1/10W
R433	0RJ1000D677	MCR03EZPJ101 100OHM 5% 1/10
R434	0RJ1000D677	MCR03EZPJ101 100OHM 5% 1/10
R435	0RJ0222D677	MCR03EZPJ220 220OHM 5% 1/10W
R436	0RJ0222D677	MCR03EZPJ220 220OHM 5% 1/10W
R437	0RJ0222D677	MCR03EZPJ220 220OHM 5% 1/10W
R438	0RJ0222D677	MCR03EZPJ220 220OHM 5% 1/10W
R441	0RJ1002D677	MCR03EZPJ103 10KOHM 5% 1/10
R442	0RJ1002D677	MCR03EZPJ103 10KOHM 5% 1/10
R451	0RJ1501D677	MCR03EZPJ152 1.5KOHM 5% 1/1
R501	0RB0680J609	PRW01T1R680J 0.68OHM 5% 1W
R502	0RD1002F609	RD-96T1J10K0 10KOHM 5% 1/6W
R502	0RJ1002D677	MCR03EZPJ103 10KOHM 5% 1/10
R503	0RD1002F609	RD-96T1J10K0 10KOHM 5% 1/6W
R503	0RJ0222D677	MCR03EZPJ220 220OHM 5% 1/10W
R504	0RS4703J607	RS-01T3J470K 470KOHM 5% 1W
R505	0RD0102A609	RDM92T1J10R0 100OHM 5% 1/2W
R506	0RJ1001D677	MCR03EZPJ102 1KOHM 5% 1/10W
R507	0RJ0000D677	MCR03EZPJ000 0OHM 5% 1/10W
R507	0RX0472K665	RSD02F4J47R0 470OHM 5% 2W 12
R508	0RJ2200D677	MCR03EZPJ221 220OHM 5% 1/10
R509	0RJ2200D677	MCR03EZPJ221 220OHM 5% 1/10
R510	0RJ4701D677	MCR03EZPJ472 4.7KOHM 5% 1/1
R510	0RF0102K607	FNS02T3J10R0 100OHM 5% 2W 12
R511	0RJ4700D677	MCR03EZPJ471 470OHM 5% 1/10
R512	0RJ0822D677	MCR03EZPJ820 820OHM 5% 1/10W
R513	0RJ0000D677	MCR03EZPJ000 0OHM 5% 1/10W
R514	0RJ0000D677	MCR03EZPJ000 0OHM 5% 1/10W
R515	0RJ1000D677	MCR03EZPJ101 100OHM 5% 1/10
R516	0RJ1001D677	MCR03EZPJ102 1KOHM 5% 1/10W
R517	0RJ3901D677	MCR03EZPJ392 3.9KOHM 5% 1/1
R518	0RJ2000D677	MCR03EZPJ201 200OHM 5% 1/10
R519	0RJ2200D677	MCR03EZPJ221 220OHM 5% 1/10
R519	0RJ4700D677	MCR03EZPJ471 470OHM 5% 1/10
R520	0RJ2200D677	MCR03EZPJ221 220OHM 5% 1/10
R520	0RJ2000D677	MCR03EZPJ201 200OHM 5% 1/10
R521	0RJ1001D677	MCR03EZPJ102 1KOHM 5% 1/10W
R523	0RJ4701D677	MCR03EZPJ472 4.7KOHM 5% 1/1
R526	0RJ4701D677	MCR03EZPJ472 4.7KOHM 5% 1/1
R529	0RJ1000D677	MCR03EZPJ101 100OHM 5% 1/10
R531	0RJ1000D677	MCR03EZPJ101 100OHM 5% 1/10
R534	0RJ1001D677	MCR03EZPJ102 1KOHM 5% 1/10W
R535	0RJ4702D677	MCR03EZPJ473 47KOHM 5% 1/10
R536	0RJ1001D677	MCR03EZPJ102 1KOHM 5% 1/10W
R540	0RJ7501D677	MCR03EZPJ752 7.5KOHM 5% 1/1
R600	0RJ0000D677	MCR03EZPJ000 0OHM 5% 1/10W
R601	0RD0821A609	RDM92T1J8R20 8.2OHM 5% 1/2W
R601	0RJ1000D677	MCR03EZPJ101 100OHM 5% 1/10
R602	0RD0821A609	RDM92T1J8R20 8.2OHM 5% 1/2W
R603	0RJ1000D677	MCR03EZPJ101 100OHM 5% 1/10

LOCA. NO	PART NO	DESCRIPTION
R604	0RD0102A609	RDM92T1J10R0 100OHM 5% 1/2W
R604	0RJ1001D677	MCR03EZPJ102 1KOHM 5% 1/10W
R605	0RD0102A609	RDM92T1J10R0 100OHM 5% 1/2W
R606	0RM0150N660	0.15OHM 5% 5W 15X18MM 10MM
R607	0RM0150N660	0.15OHM 5% 5W 15X18MM 10MM
R608	0RJ8201E472	MCR10EZHF 8202 8.2KOHM 1% 1
R609	0RH1504D622	MCR10EZJ155 1.5MOHM 5% 1/8
R610	0RH1504D622	MCR10EZJ155 1.5MOHM 5% 1/8
R611	0RH1504D622	MCR10EZJ155 1.5MOHM 5% 1/8
R612	0RH2704D622	MCR10EZJ275 2.7MOHM 5% 1/8
R613	0RJ1203E472	MCR10EZHF 1203 120KOHM 1% 1
R614	0RH2200D622	MCR10EZJ221 220OHM 5% 1/8W
R615	0RJ0000D677	MCR03EZPJ000 0OHM 5% 1/10W
R615	0RH3002D622	MCR10EZJ303 30KOHM 5% 1/8W
R616	0RJ0000D677	MCR03EZPJ000 0OHM 5% 1/10W
R616	0RH1002D422	MCR10EZHF103 10KOHM 1% 1/8W
R617	0RJ0000D677	MCR03EZPJ000 0OHM 5% 1/10W
R620	0RJ1000D677	MCR03EZPJ101 100OHM 5% 1/10
R621	0RJ0000D677	MCR03EZPJ000 0OHM 5% 1/10W
R626	0RH1504D622	MCR10EZJ155 1.5MOHM 5% 1/8
R627	0RJ0000D677	MCR03EZPJ000 0OHM 5% 1/10W
R628	0RD0152Q609	RDM94T1J15R0 150OHM 5% 1/4W
R628	0RJ0000D677	MCR03EZPJ000 0OHM 5% 1/10W
R629	0RD2202Q609	RDM94T1J22K0 22KOHM 5% 1/4W
R629	0RJ1500D677	MCR03EZPJ151 150OHM 5% 1/10
R630	0RD0152Q609	RDM94T1J15R0 150OHM 5% 1/4W
R630	0RJ4700D677	MCR03EZPJ471 470OHM 5% 1/10
R631	0RD2202Q609	RDM94T1J22K0 22KOHM 5% 1/4W
R631	0RJ1500D677	MCR03EZPJ151 150OHM 5% 1/10
R632	0RC2503Q609	250KOHM 5% 1/4W 9MM 5
R632	0RJ1802D677	MCR03EZPJ183 18KOHM 5% 1/10
R633	0RC2503Q609	250KOHM 5% 1/4W 9MM 5
R633	0RJ1000D677	MCR03EZPJ101 100OHM 5% 1/10
R634	0RC2503Q609	250KOHM 5% 1/4W 9MM 5
R634	0RJ1000D677	MCR03EZPJ101 100OHM 5% 1/10
R635	0RJ1000D677	MCR03EZPJ101 100OHM 5% 1/10
R636	0RJ1000D677	MCR03EZPJ101 100OHM 5% 1/10
R637	0RJ1000D677	MCR03EZPJ101 100OHM 5% 1/10
R638	0RJ1001D677	MCR03EZPJ102 1KOHM 5% 1/10W
R640	0RJ1000D677	MCR03EZPJ101 100OHM 5% 1/10
R645	0RJ1000D677	MCR03EZPJ101 100OHM 5% 1/10
R646	0RJ0000D677	MCR03EZPJ000 0OHM 5% 1/10W
R647	0RJ1002D677	MCR03EZPJ103 10KOHM 5% 1/10
R648	0RJ1002D677	MCR03EZPJ103 10KOHM 5% 1/10
R649	0RJ1002D677	MCR03EZPJ103 10KOHM 5% 1/10
R650	0RJ1002D677	MCR03EZPJ103 10KOHM 5% 1/10
R651	0RJ1002D677	MCR03EZPJ103 10KOHM 5% 1/10
R652	0RJ1002D677	MCR03EZPJ103 10KOHM 5% 1/10
R653	0RJ1000D677	MCR03EZPJ101 100OHM 5% 1/10
R654	0RJ1000D677	MCR03EZPJ101 100OHM 5% 1/10
R656	0RJ1000D677	MCR03EZPJ101 100OHM 5% 1/10
R657	0RJ0000D677	MCR03EZPJ000 0OHM 5% 1/10W

For Capacitor & Resistors, the characters at 2nd and 3rd digit in the P/No. means as follows;	CC, CX, CK, CN : Ceramic CQ : Polyester CE : Electrolytic	RD : Carbon Film RS : Metal Oxide Film RN : Metal Film RF : Fusible
--	---	--

LOCA. NO	PART NO	DESCRIPTION
R658	0RJ0000D677	MCR03EZPJ000 0OHM 5% 1/10W
R660	0RJ8201D677	MCR03EZPJ822 8.2KOHM 5% 1/1
R662	0RJ1002D677	MCR03EZPJ103 10KOHM 5% 1/10
R663	0RJ1002D677	MCR03EZPJ103 10KOHM 5% 1/10
R664	0RJ1001D677	MCR03EZPJ102 1KOHM 5% 1/10W
R665	0RJ1001D677	MCR03EZPJ102 1KOHM 5% 1/10W
R666	0RJ4701D677	MCR03EZPJ472 4.7KOHM 5% 1/1
R667	0RJ1000D677	MCR03EZPJ101 100OHM 5% 1/10
R668	0RJ1000D677	MCR03EZPJ101 100OHM 5% 1/10
R670	0RJ1000D677	MCR03EZPJ101 100OHM 5% 1/10
R671	0RJ4701D677	MCR03EZPJ472 4.7KOHM 5% 1/1
R672	0RJ1000D677	MCR03EZPJ101 100OHM 5% 1/10
R673	0RJ6201D677	MCR03EZPJ622 6.2KOHM 5% 1/1
R675	0RJ1000D677	MCR03EZPJ101 100OHM 5% 1/10
R676	0RJ1000D677	MCR03EZPJ101 100OHM 5% 1/10
R677	0RJ1000D677	MCR03EZPJ101 100OHM 5% 1/10
R678	0RJ1000D677	MCR03EZPJ101 100OHM 5% 1/10
R679	0RJ1000D677	MCR03EZPJ101 100OHM 5% 1/10
R680	0RJ1000D677	MCR03EZPJ101 100OHM 5% 1/10
R681	0RJ2001D677	MCR03EZPJ202 2KOHM 5% 1/10W
R683	0RJ1000D677	MCR03EZPJ101 100OHM 5% 1/10
R684	0RJ1000D677	MCR03EZPJ101 100OHM 5% 1/10
R685	0RJ1000D677	MCR03EZPJ101 100OHM 5% 1/10
R686	0RJ1000D677	MCR03EZPJ101 100OHM 5% 1/10
R687	0RJ1000D677	MCR03EZPJ101 100OHM 5% 1/10
R689	0RJ2200D677	MCR03EZPJ221 220OHM 5% 1/10
R690	0RJ1000D677	MCR03EZPJ101 100OHM 5% 1/10
R691	0RJ2200D677	MCR03EZPJ221 220OHM 5% 1/10
R692	0RJ1000D677	MCR03EZPJ101 100OHM 5% 1/10
R693	0RJ2200D677	MCR03EZPJ221 220OHM 5% 1/10
R694	0RJ1000D677	MCR03EZPJ101 100OHM 5% 1/10
R695	0RJ0222D677	MCR03EZPJ220 220OHM 5% 1/10W
R697	0RJ2001D677	MCR03EZPJ202 2KOHM 5% 1/10W
R698	0RJ0000D677	MCR03EZPJ000 0OHM 5% 1/10W
R699	0RJ1000D677	MCR03EZPJ101 100OHM 5% 1/10
R700	0RJ1000D677	MCR03EZPJ101 100OHM 5% 1/10
R701	0RJ0000D677	MCR03EZPJ000 0OHM 5% 1/10W
R701	0RH4701D422	MCR10EZHF472 4.7KOHM 1% 1/8
R702	0RJ1000D677	MCR03EZPJ101 100OHM 5% 1/10
R702	0RH2701D422	MCR10EZHF272 2.7KOHM 1% 1/8
R703	0RJ1000D677	MCR03EZPJ101 100OHM 5% 1/10
R703	0RH1002D422	MCR10EZHF103 10KOHM 1% 1/8W
R704	0RJ6202D677	MCR03EZPJ623 62KOHM 5% 1/10
R704	0RN3901F409	RN-96T1F3K90 3.9KOHM 1% 1/6
R705	0RJ2402D677	MCR03EZPJ243 24KOHM 5% 1/10
R705	0RH1802D422	MCR10EZHF183 18KOHM 1% 1/8W
R706	0RH2701D422	MCR10EZHF272 2.7KOHM 1% 1/8
R707	0RH5601D422	MCR10EZHF562 5.6KOHM 1% 1/8
R708	0RJ1501D677	MCR03EZPJ152 1.5KOHM 5% 1/1
R708	0RH1002D422	MCR10EZHF103 10KOHM 1% 1/8W
R709	0RJ4700D677	MCR03EZPJ471 470OHM 5% 1/10
R710	0RH2701D422	MCR10EZHF272 2.7KOHM 1% 1/8

LOCA. NO	PART NO	DESCRIPTION
R711	0RJ0222D677	MCR03EZPJ220 220OHM 5% 1/10W
R711	0RH2701D422	MCR10EZHF272 2.7KOHM 1% 1/8
R712	0RJ0222D677	MCR03EZPJ220 220OHM 5% 1/10W
R712	0RH2701D422	MCR10EZHF272 2.7KOHM 1% 1/8
R713	0RJ0222D677	MCR03EZPJ220 220OHM 5% 1/10W
R713	0RH2701D422	MCR10EZHF272 2.7KOHM 1% 1/8
R714	0RJ2200D677	MCR03EZPJ221 220OHM 5% 1/10
R714	0RH2701D422	MCR10EZHF272 2.7KOHM 1% 1/8
R715	0RJ2200D677	MCR03EZPJ221 220OHM 5% 1/10
R715	0RH2701D422	MCR10EZHF272 2.7KOHM 1% 1/8
R716	0RJ0000D677	MCR03EZPJ000 0OHM 5% 1/10W
R716	0RH2701D422	MCR10EZHF272 2.7KOHM 1% 1/8
R717	0RJ0000D677	MCR03EZPJ000 0OHM 5% 1/10W
R717	0RH2701D422	MCR10EZHF272 2.7KOHM 1% 1/8
R718	0RJ4701D677	MCR03EZPJ472 4.7KOHM 5% 1/1
R719	0RJ0000D677	MCR03EZPJ000 0OHM 5% 1/10W
R719	0RH1002D622	MCR10EZJ103 10KOHM 5% 1/8W
R720	0RJ0000D677	MCR03EZPJ000 0OHM 5% 1/10W
R721	0RJ4701D677	MCR03EZPJ472 4.7KOHM 5% 1/1
R721	0RH1002D622	MCR10EZJ103 10KOHM 5% 1/8W
R722	0RJ0000D677	MCR03EZPJ000 0OHM 5% 1/10W
R722	0RH1002D422	MCR10EZHF103 10KOHM 1% 1/8W
R723	0RJ0000D677	MCR03EZPJ000 0OHM 5% 1/10W
R724	0RJ0000D677	MCR03EZPJ000 0OHM 5% 1/10W
R724	0RH1001D622	MCR10EZJ102 1KOHM 5% 1/8W
R725	0RJ0000D677	MCR03EZPJ000 0OHM 5% 1/10W
R725	0RH4701D622	MCR10EZJ472 4.7KOHM 5% 1/8
R726	0RJ0000D677	MCR03EZPJ000 0OHM 5% 1/10W
R726	0RH1001D622	MCR10EZJ102 1KOHM 5% 1/8W
R727	0RJ0000D677	MCR03EZPJ000 0OHM 5% 1/10W
R728	0RJ1000D677	MCR03EZPJ101 100OHM 5% 1/10
R728	0RH1002D622	MCR10EZJ103 10KOHM 5% 1/8W
R728	0RH4702D622	MCR10EZJ473 47KOHM 5% 1/8W
R729	0RJ1000D677	MCR03EZPJ101 100OHM 5% 1/10
R729	0RH4702D622	MCR10EZJ473 47KOHM 5% 1/8W
R730	0RJ1000D677	MCR03EZPJ101 100OHM 5% 1/10
R730	0RH4702D622	MCR10EZJ473 47KOHM 5% 1/8W
R731	0RH2201D622	MCR10EZJ222 2.2KOHM 5% 1/8
R732	0RJ1000D677	MCR03EZPJ101 100OHM 5% 1/10
R732	0RH2201D622	MCR10EZJ222 2.2KOHM 5% 1/8
R733	0RJ1000D677	MCR03EZPJ101 100OHM 5% 1/10
R733	0RH2201D622	MCR10EZJ222 2.2KOHM 5% 1/8
R734	0RJ1000D677	MCR03EZPJ101 100OHM 5% 1/10
R734	0RH1002D622	MCR10EZJ103 10KOHM 5% 1/8W
R735	0RJ0000D677	MCR03EZPJ000 0OHM 5% 1/10W
R735	0RH1001D622	MCR10EZJ102 1KOHM 5% 1/8W
R736	0RH1002D622	MCR10EZJ103 10KOHM 5% 1/8W
R736	0RJ1000D677	MCR03EZPJ101 100OHM 5% 1/10
R737	0RD1001F609	RD-96T1J1K00 1KOHM 5% 1/6W
R737	0RJ1000D677	MCR03EZPJ101 100OHM 5% 1/10
R738	0RJ0000D677	MCR03EZPJ000 0OHM 5% 1/10W
R738	0RH1001D622	MCR10EZJ102 1KOHM 5% 1/8W

For Capacitor & Resistors, the characters at 2nd and 3rd digit in the P/No. means as follows;	CC, CX, CK, CN : Ceramic	RD : Carbon Film
	CQ : Polyester	RS : Metal Oxide Film
	CE : Electrolytic	RN : Metal Film
		RF : Fusible

LOCA. NO	PART NO	DESCRIPTION
R740	0RH1002D622	MCR10EZHJ103 10KOHM 5% 1/8W
R741	0RD1002F609	RD-96T1J10K0 10KOHM 5% 1/6W
R742	0RJ6201D677	MCR03EZPJ622 6.2KOHM 5% 1/1
R742	0RH1001D622	MCR10EZHJ102 1KOHM 5% 1/8W
R744	0RJ1001D677	MCR03EZPJ102 1KOHM 5% 1/10W
R745	0RH4701D622	MCR10EZHJ472 4.7KOHM 5% 1/8
R746	0RH4701D622	MCR10EZHJ472 4.7KOHM 5% 1/8
R747	0RH4701D622	MCR10EZHJ472 4.7KOHM 5% 1/8
R747	0RJ1000D677	MCR03EZPJ101 100OHM 5% 1/10
R748	0RH4701D622	MCR10EZHJ472 4.7KOHM 5% 1/8
R748	0RJ1000D677	MCR03EZPJ101 100OHM 5% 1/10
R749	0RD6800F609	RD-96T1J680R 680OHM 5% 1/6W
R749	0RJ1000D677	MCR03EZPJ101 100OHM 5% 1/10
R750	0RJ0000D677	MCR03EZPJ000 0OHM 5% 1/10W
R750	0RH1000D622	MCR10EZHJ101 100OHM 5% 1/8W
R751	0RJ1000D677	MCR03EZPJ101 100OHM 5% 1/10
R751	0RH1002D622	MCR10EZHJ103 10KOHM 5% 1/8W
R752	0RJ1000D677	MCR03EZPJ101 100OHM 5% 1/10
R753	0RJ1000D677	MCR03EZPJ101 100OHM 5% 1/10
R753	0RH1002D622	MCR10EZHJ103 10KOHM 5% 1/8W
R754	0RH1001D422	MCR10EZHJ102 1KOHM 1% 1/8W
R756	0RJ1000D677	MCR03EZPJ101 100OHM 5% 1/10
R757	0RJ1000D677	MCR03EZPJ101 100OHM 5% 1/10
R758	0RJ1001D677	MCR03EZPJ102 1KOHM 5% 1/10W
R759	0RJ1001D677	MCR03EZPJ102 1KOHM 5% 1/10W
R759	0RH0471D622	MCR10EZHJ4R7 4.7OHM 5% 1/8W
R760	0RJ1001D677	MCR03EZPJ102 1KOHM 5% 1/10W
R760	0RH4701D622	MCR10EZHJ472 4.7KOHM 5% 1/8
R761	0RJ1001D677	MCR03EZPJ102 1KOHM 5% 1/10W
R762	0RH1002D622	MCR10EZHJ103 10KOHM 5% 1/8W
R762	0RJ1001D677	MCR03EZPJ102 1KOHM 5% 1/10W
R763	0RH1002D622	MCR10EZHJ103 10KOHM 5% 1/8W
R763	0RJ1001D677	MCR03EZPJ102 1KOHM 5% 1/10W
R764	0RJ1001D677	MCR03EZPJ102 1KOHM 5% 1/10W
R765	0RJ1001D677	MCR03EZPJ102 1KOHM 5% 1/10W
R766	0RJ1001D677	MCR03EZPJ102 1KOHM 5% 1/10W
R767	0RJ1001D677	MCR03EZPJ102 1KOHM 5% 1/10W
R768	0RJ1001D677	MCR03EZPJ102 1KOHM 5% 1/10W
R769	0RJ1001D677	MCR03EZPJ102 1KOHM 5% 1/10W
R771	0RJ2200D677	MCR03EZPJ221 220OHM 5% 1/10
R772	0RJ2200D677	MCR03EZPJ221 220OHM 5% 1/10
R781	0RJ3001D677	MCR03EZPJ302 3KOHM 5% 1/10W
R782	0RJ3001D677	MCR03EZPJ302 3KOHM 5% 1/10W
R783	0RJ0000D677	MCR03EZPJ000 0OHM 5% 1/10W
R784	0RJ0000D677	MCR03EZPJ000 0OHM 5% 1/10W
R785	0RJ1500D677	MCR03EZPJ151 150OHM 5% 1/10
R785	0RJ0000D677	MCR03EZPJ000 0OHM 5% 1/10W
R786	0RJ1802D677	MCR03EZPJ183 18KOHM 5% 1/10
R800	0RJ1000D477	MCR03EZPF101 100OHM 1% 1/10
R801	0RD0102A609	RDM92T1J10R0 100OHM 5% 1/2W
R801	0RJ1000D477	MCR03EZPF101 100OHM 1% 1/10
R802	0RH2202D622	MCR10EZHJ223 22KOHM 5% 1/8W

LOCA. NO	PART NO	DESCRIPTION
R802	0RJ1000D477	MCR03EZPF101 100OHM 1% 1/10
R803	0RM0200N660	0.2OHM 5% 5W 14X9.5MM 10MM
R803	0RJ1000D477	MCR03EZPF101 100OHM 1% 1/10
R804	0RH0000D622	MCR10EZHJ000 0OHM 5% 1/8W 2
R804	0RJ1000D477	MCR03EZPF101 100OHM 1% 1/10
R805	0RH1302D622	MCR10EZHJ133 13KOHM 5% 1/8W
R805	0RJ1000D477	MCR03EZPF101 100OHM 1% 1/10
R806	0RH1602D622	MCR10EZHJ163 16KOHM 5% 1/8W
R806	0RJ1000D477	MCR03EZPF101 100OHM 1% 1/10
R807	0RJ1000D477	MCR03EZPF101 100OHM 1% 1/10
R807	0RZZ9TA003A	3 W 39K OHM 5% SF20MM BULK
R808	0RJ1000D477	MCR03EZPF101 100OHM 1% 1/10
R809	0RH1002D622	MCR10EZHJ103 10KOHM 5% 1/8W
R809	0RJ1000D477	MCR03EZPF101 100OHM 1% 1/10
R810	0RD4301F609	RD-96T1J4K30 4.3KOHM 5% 1/6
R810	0RJ1000D477	MCR03EZPF101 100OHM 1% 1/10
R811	0RJ1000D477	MCR03EZPF101 100OHM 1% 1/10
R812	0RJ1000D477	MCR03EZPF101 100OHM 1% 1/10
R813	0RJ1000D477	MCR03EZPF101 100OHM 1% 1/10
R814	0RH1002D622	MCR10EZHJ103 10KOHM 5% 1/8W
R816	0RJ1000D677	MCR03EZPJ101 100OHM 5% 1/10
R822	0RJ2001D677	MCR03EZPJ202 2KOHM 5% 1/10W
R823	0RJ2001D677	MCR03EZPJ202 2KOHM 5% 1/10W
R828	0RJ4703D677	MCR03EZPJ474 470KOHM 5% 1/1
R829	0RJ4703D677	MCR03EZPJ474 470KOHM 5% 1/1
R833	0RJ0000D677	MCR03EZPJ000 0OHM 5% 1/10W
R834	0RJ0000D677	MCR03EZPJ000 0OHM 5% 1/10W
R838	0RJ2001D677	MCR03EZPJ202 2KOHM 5% 1/10W
R839	0RJ2001D677	MCR03EZPJ202 2KOHM 5% 1/10W
R843	0RJ1002D677	MCR03EZPJ103 10KOHM 5% 1/10
R844	0RJ1002D677	MCR03EZPJ103 10KOHM 5% 1/10
R847	0RJ1003D677	MCR03EZPJ104 100KOHM 5% 1/1
R848	0RJ1000D677	MCR03EZPJ101 100OHM 5% 1/10
R849	0RJ1001D677	MCR03EZPJ102 1KOHM 5% 1/10W
R850	0RJ1001D677	MCR03EZPJ102 1KOHM 5% 1/10W
R851	0RM0100N660	MPR05V-JR100 for PDP 0.1OHM
R851	0RJ4701D677	MCR03EZPJ472 4.7KOHM 5% 1/1
R852	0RH1002D622	MCR10EZHJ103 10KOHM 5% 1/8W
R852	0RJ4701D677	MCR03EZPJ472 4.7KOHM 5% 1/1
R853	0RD3301F609	RD-96T1J3K30 3.3KOHM 5% 1/6
R855	0RJ0000D677	MCR03EZPJ000 0OHM 5% 1/10W
R855	0RH1202D622	MCR10EZHJ123 12KOHM 5% 1/8W
R856	0RH2202D622	MCR10EZHJ223 22KOHM 5% 1/8W
R856	0RJ0000D677	MCR03EZPJ000 0OHM 5% 1/10W
R857	0RJ0000D677	MCR03EZPJ000 0OHM 5% 1/10W
R857	0RZZ9TA003B	3 W 110K OHM 5% SF20MM BULK
R858	0RJ0000D677	MCR03EZPJ000 0OHM 5% 1/10W
R859	0RD0102A609	RDM92T1J10R0 100OHM 5% 1/2W
R861	0RD1002F609	RD-96T1J10K0 10KOHM 5% 1/6W
R861	0RJ0000D677	MCR03EZPJ000 0OHM 5% 1/10W
R862	0RJ0000D677	MCR03EZPJ000 0OHM 5% 1/10W
R862	0RH2202D622	MCR10EZHJ223 22KOHM 5% 1/8W

For Capacitor & Resistors, the characters at 2nd and 3rd digit in the P/No. means as follows;	CC, CX, CK, CN : Ceramic CQ : Polyester CE : Electrolytic	RD : Carbon Film RS : Metal Oxide Film RN : Metal Film RF : Fusible
--	---	--

LOCA. NO	PART NO	DESCRIPTION
R863	0RJ0000D677	MCR03EZPJ000 0OHM 5% 1/10W
R863	0RH1002D622	MCR10EZHJ103 10KOHM 5% 1/8W
R864	0RJ0000D677	MCR03EZPJ000 0OHM 5% 1/10W
R865	0RJ0000D677	MCR03EZPJ000 0OHM 5% 1/10W
R866	0RJ0000D677	MCR03EZPJ000 0OHM 5% 1/10W
R867	0RJ0000D677	MCR03EZPJ000 0OHM 5% 1/10W
R868	0RJ0000D677	MCR03EZPJ000 0OHM 5% 1/10W
R869	0RJ0000D677	MCR03EZPJ000 0OHM 5% 1/10W
R870	0RJ0000D677	MCR03EZPJ000 0OHM 5% 1/10W
R871	0RJ0000D677	MCR03EZPJ000 0OHM 5% 1/10W
R872	0RJ0000D677	MCR03EZPJ000 0OHM 5% 1/10W
R873	0RJ1002D677	MCR03EZPJ103 10KOHM 5% 1/10
R874	0RJ0000D677	MCR03EZPJ000 0OHM 5% 1/10W
R875	0RJ0000D677	MCR03EZPJ000 0OHM 5% 1/10W
R876	0RJ0000D677	MCR03EZPJ000 0OHM 5% 1/10W
R901	0RH8200D622	MCR10EZHJ821 820OHM 5% 1/8W
R902	0RH2700D622	MCR10EZHJ271 270OHM 5% 1/8W
R902	0RJ1001D677	MCR03EZPJ102 1KOHM 5% 1/10W
R903	0RJ4701D677	MCR03EZPJ472 4.7KOHM 5% 1/1
R903	0RH1802D422	MCR10EZHJ183 18KOHM 1% 1/8W
R904	0RH2202D422	MCR10EZHJ223 22KOHM 1% 1/8W
R905	0RJ2000D677	MCR03EZPJ201 200OHM 5% 1/10
R905	0RJ2001E472	MCR10EZHJ202 2KOHM 1% 1/8W
R906	0RJ0000D677	MCR03EZPJ000 0OHM 5% 1/10W
R907	0RH9101D622	MCR10EZHJ912 9.1KOHM 5% 1/8
R908	0RH0102D622	MCR10EZHJ100 10OHM 5% 1/8W
R909	0RH2702D422	MCR10EZHJ273 27KOHM 1% 1/8W
R909	0RJ4701D677	MCR03EZPJ472 4.7KOHM 5% 1/1
R910	0RH2702D422	MCR10EZHJ273 27KOHM 1% 1/8W
R910	0RJ4701D677	MCR03EZPJ472 4.7KOHM 5% 1/1
R911	0RX0101K618	S M L02R0J1R00 1OHM 5% 2W 1
R912	0RJ1002D677	MCR03EZPJ103 10KOHM 5% 1/10
R913	0RJ1002D677	MCR03EZPJ103 10KOHM 5% 1/10
R916	0RJ1002D677	MCR03EZPJ103 10KOHM 5% 1/10
R918	0RJ1002D677	MCR03EZPJ103 10KOHM 5% 1/10
R919	0RJ1002D677	MCR03EZPJ103 10KOHM 5% 1/10
R920	0RJ1002D677	MCR03EZPJ103 10KOHM 5% 1/10
R921	0RJ1002D677	MCR03EZPJ103 10KOHM 5% 1/10
R922	0RJ1102D677	MCR03EZPJ113 11KOHM 5% 1/10
R923	0RJ2002D677	MCR03EZPJ203. 20KOHM 5% 1/1
R924	0RJ4701D677	MCR03EZPJ472 4.7KOHM 5% 1/1
R925	0RJ0000D677	MCR03EZPJ000 0OHM 5% 1/10W
R926	0RJ4701D677	MCR03EZPJ472 4.7KOHM 5% 1/1
R927	0RJ1002D677	MCR03EZPJ103 10KOHM 5% 1/10
R928	0RJ1002D677	MCR03EZPJ103 10KOHM 5% 1/10
R929	0RJ1002D677	MCR03EZPJ103 10KOHM 5% 1/10
R933	0RH0000D622	MCR10EZHJ000 0OHM 5% 1/8W 2
R934	0RH0000D622	MCR10EZHJ000 0OHM 5% 1/8W 2
R935	0RH0000D622	MCR10EZHJ000 0OHM 5% 1/8W 2
R937	0RJ0000D677	MCR03EZPJ000 0OHM 5% 1/10W
R938	0RJ0000D677	MCR03EZPJ000 0OHM 5% 1/10W
R941	0RJ0000D677	MCR03EZPJ000 0OHM 5% 1/10W

LOCA. NO	PART NO	DESCRIPTION
R951	0RH1001D622	MCR10EZHJ102 1KOHM 5% 1/8W
R952	0RD2700F609	RD-96T1J270R 270OHM 5% 1/6W
R953	0RJ2402E472	MCR10EZHJ243 24KOHM 1% 1/8W
R954	0RH3902D422	MCR10EZHJ393 39KOHM 1% 1/8W
R955	0RH3902D422	MCR10EZHJ393 39KOHM 1% 1/8W
R956	0RH3902D422	MCR10EZHJ393 39KOHM 1% 1/8W
R957	0RM0102N760	10OHM 10% 5W 13X4MM 5MM RAD
R958	0RM0102N760	10OHM 10% 5W 13X4MM 5MM RAD
R959	0RM0102N760	10OHM 10% 5W 13X4MM 5MM RAD
R960	0RH1002D622	MCR10EZHJ103 10KOHM 5% 1/8W
R961	0RH3902D422	MCR10EZHJ393 39KOHM 1% 1/8W
R962	0RH3902D422	MCR10EZHJ393 39KOHM 1% 1/8W
R963	0RH3302L422	MCR10EZHJ333 33KOHM 1% 1/8W
R964	0RH3302L422	MCR10EZHJ333 33KOHM 1% 1/8W
R966	0RH3302L422	MCR10EZHJ333 33KOHM 1% 1/8W
R967	0RH2201D422	MCR10EZHJ222 2.2KOHM 1% 1/8
R969	0RH1003D622	MCR10EZHJ104 100KOHM 5% 1/8
R970	0RH4702D622	MCR10EZHJ473 47KOHM 5% 1/8W
R971	0RH0000D622	MCR10EZHJ000 0OHM 5% 1/8W 2
R972	0RH5601D622	MCR10EZHJ562 5.6KOHM 5% 1/8
R973	0RH1000D622	MCR10EZHJ101 100OHM 5% 1/8W
VR221	180-035J	EVNDJAA03B23 2KOHM 15% 1/10
VR901	180-035Q	EVNDJAA03B24 20KOHM 15% 1/1
VR951	180-035S	EVNDJAA03B54 50KOHM 15% 1/1
SWITCH		
SW101	140-313B	Switch,Tact KPT-1115AM 1C1P 12VDC
SW102	140-313B	Switch,Tact KPT-1115AM 1C1P 12VDC
SW103	140-313B	Switch,Tact KPT-1115AM 1C1P 12VDC
SW104	140-313B	Switch,Tact KPT-1115AM 1C1P 12VDC
SW105	140-313B	Switch,Tact KPT-1115AM 1C1P 12VDC
SW106	140-313B	Switch,Tact KPT-1115AM 1C1P 12VDC
SW107	140-313B	Switch,Tact KPT-1115AM 1C1P 12VDC
SW108	140-313B	Switch,Tact KPT-1115AM 1C1P 12VDC
FILTER & CRYSTAL		
AR400	6210TCE002B	Filter,Bead HB-4M3216-121JT 120OHM
AR401	6210TCE002B	Filter,Bead HB-4M3216-121JT 120OHM
AR402	6210TCE002B	Filter,Bead HB-4M3216-121JT 120OHM
AR403	6210TCE002B	Filter,Bead HB-4M3216-121JT 120OHM
AR404	6210TCE002B	Filter,Bead HB-4M3216-121JT 120OHM
AR405	6210TCE002B	Filter,Bead HB-4M3216-121JT 120OHM
F1	6200J000115	Filter,AC Line IJ-E06CE-SL1 5.3mH
F2	6210VH0004A	Filter,Ferrite Core 6210VH0004A 100OHM
F3	6210VH0004B	Filter,Ferrite Core ZCAT1518-0730-M-K 65OHM
L1000	6210TCE001G	Filter,Bead HH-1M3216-501JT 500OHM 3
L1002	6210TCE001G	Filter,Bead HH-1M3216-501JT 500OHM 3
L1007	6210TCE001G	Filter,Bead HH-1M3216-501JT 500OHM 3
L1008	6210TCE001G	Filter,Bead HH-1M3216-501JT 500OHM 3
L1010	6210TCE001G	Filter,Bead HH-1M3216-501JT 500OHM 3
L1011	6210TCE001G	Filter,Bead HH-1M3216-501JT 500OHM 3
L1012	6210TCE001G	Filter,Bead HH-1M3216-501JT 500OHM 3

For Capacitor & Resistors, the characters at 2nd and 3rd digit in the P/No. means as follows;

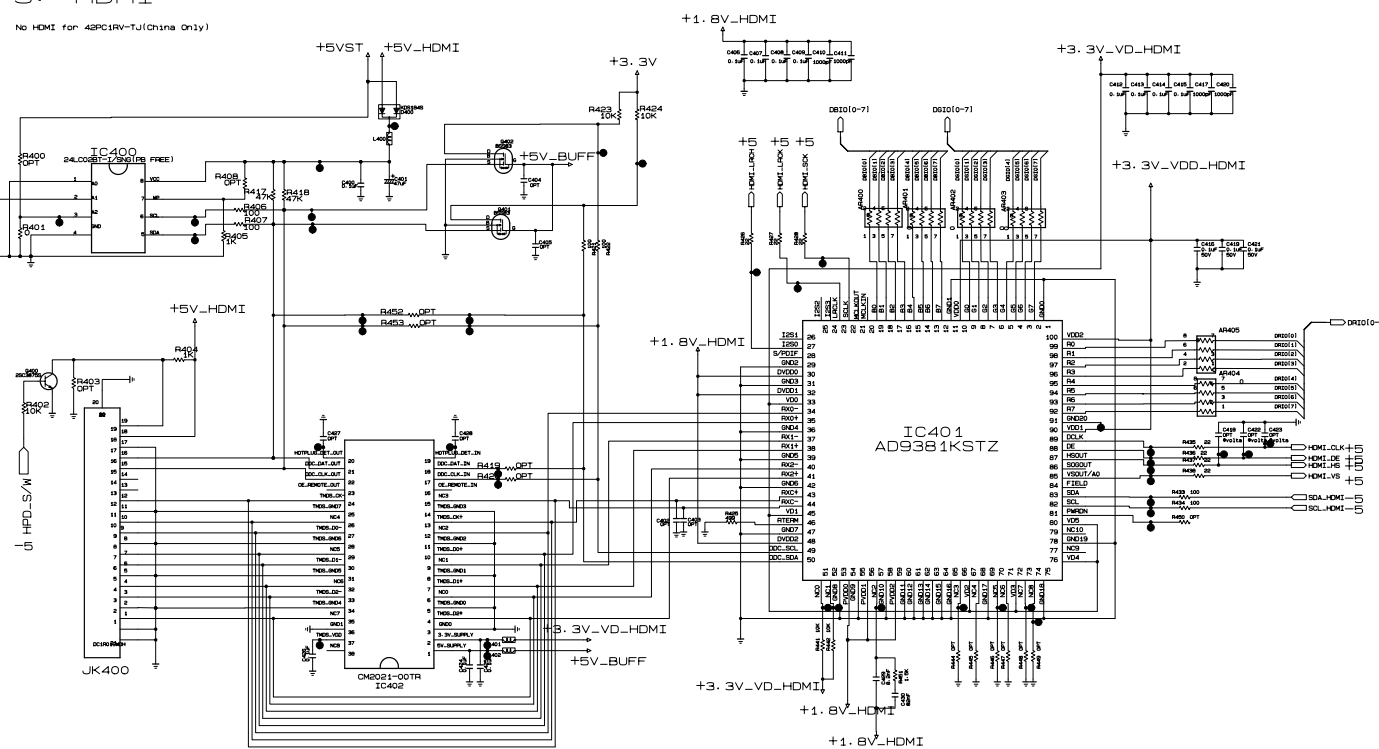
CC, CX, CK, CN : Ceramic	RD : Carbon Film
CQ : Polyester	RS : Metal Oxide Film
CE : Electrolytic	RN : Metal Film
	RF : Fusible

LOCA. NO	PART NO	DESCRIPTION
L1015	6210TCE001G	Filter,Bead HH-1M3216-501JT 500OHM 3
L1016	6210TCE001G	Filter,Bead HH-1M3216-501JT 500OHM 3
L1018	6210TCE001G	Filter,Bead HH-1M3216-501JT 500OHM 3
L112	6200J00005F	Filter,Bead HB-1M1608-102JT 1000OHM
L113	6200J00005F	Filter,Bead HB-1M1608-102JT 1000OHM
L114	6200J00005F	Filter,Bead HB-1M1608-102JT 1000OHM
L115	6200J00005F	Filter,Bead HB-1M1608-102JT 1000OHM
L300	6200JB8010L	Filter,Bead MLB-201209-1000L-N2 1000OHM 2
L301	6200JB8010L	Filter,Bead MLB-201209-1000L-N2 1000OHM 2
L302	6210TCE001G	Filter,Bead HH-1M3216-501JT 500OHM
L303	6210TCE001G	Filter,Bead HH-1M3216-501JT 500OHM
L304	6210TCE001E	Filter,Bead HB-1M2012-800JT 80OHM X
L305	6210TCE001G	Filter,Bead HH-1M3216-501JT 500OHM
L306	6210TCE001P	Filter,Bead HB-1S2012-121JT 120OHM
L307	6210TCE001P	Filter,Bead HB-1S2012-121JT 120OHM
L308	6210TCE001P	Filter,Bead HB-1S2012-121JT 120OHM
L309	6210TCE001P	Filter,Bead HB-1S2012-121JT 120OHM
L310	6210TCE001P	Filter,Bead HB-1S2012-121JT 120OHM
L400	6210TCE001G	Filter,Bead HH-1M3216-501JT 500OHM
L501	6210TCE001G	Filter,Bead HH-1M3216-501JT 500OHM
L502	6210TCE001G	Filter,Bead HH-1M3216-501JT 500OHM
L806	6210TCE001G	Filter,Bead HH-1M3216-501JT 500OHM
L813	6210TCE001G	Filter,Bead HH-1M3216-501JT 500OHM
L814	6210TCE001G	Filter,Bead HH-1M3216-501JT 500OHM
L815	6210TCE001P	Filter,Bead HB-1S2012-121JT 120OHM
L816	6210TCE001P	Filter,Bead HB-1S2012-121JT 120OHM
L817	6210TCE001P	Filter,Bead HB-1S2012-121JT 120OHM
L818	6210TCE001P	Filter,Bead HB-1S2012-121JT 120OHM
L819	6210TCE001G	Filter,Bead HH-1M3216-501JT 500OHM
L820	6210TCE001G	Filter,Bead HH-1M3216-501JT 500OHM
L904	6210TCE001G	Filter,Bead HH-1M3216-501JT 500OHM
L905	6210TCE001G	Filter,Bead HH-1M3216-501JT 500OHM
L906	6210TCE001G	Filter,Bead HH-1M3216-501JT 500OHM
L913	6210TCE001G	Filter,Bead HH-1M3216-501JT 500OHM
L914	6210TCE001G	Filter,Bead HH-1M3216-501JT 500OHM
L915	6210TCE001G	Filter,Bead HH-1M3216-501JT 500OHM
L916	6210TCE001G	Filter,Bead HH-1M3216-501JT 500OHM
L917	6210TCE001G	Filter,Bead HH-1M3216-501JT 500OHM
L918	6210TCE001G	Filter,Bead HH-1M3216-501JT 500OHM
L919	6210TCE001G	Filter,Bead HH-1M3216-501JT 500OHM
L920	6210TCE001G	Filter,Bead HH-1M3216-501JT 500OHM
L921	6210TCE001G	Filter,Bead HH-1M3216-501JT 500OHM
L922	6210TCE001P	Filter,Bead HB-1S2012-121JT 120OHM
L923	6210TCE001P	Filter,Bead HB-1S2012-121JT 120OHM
L924	6210TCE001G	Filter,Bead HH-1M3216-501JT 500OHM
LF101	6200J000156	Filter,Line Noise LSA10126D 12.6MH
X600	6202VDT002P	Crystal,HC-49/SM 20.25000MHZ
MISCELLANEOUS		
F101	OFS8001B53B	Fuse,Time Delay 215008 250V
F101-1	430-858C	Fuse Holder,AFC-520
F101-2	430-858C	Fuse Holder,AFC-520

LOCA. NO	PART NO	DESCRIPTION
IC01	SAA30014010	S/W,Firmware V3.09 AC2C
PA101	6712000011B	Receiver Module,KSM-2013TE2A
RL101	6920000039A	Relay,ConTact DG5D1-O(M)
RL102	6920000039A	Relay,ConTact DG5D1-O(M)
TH101	6322A00005B	Thermistor,NTC SCK15068MSY 8OHM 20%
TH102	6322A00005B	Thermistor,NTC SCK15068MSY 8OHM 20%
TU1	6700NF0025C	Tuner,Analog TAFV-H303P
VA101	6102000021A	Varistor,S14K385E2 620V 10%
X701	166-E05D	Resonator,Ceramic CSTLS8M00G53-A0
ACCESSORIES		
A1	38289U0577D	Manual,USER
A2	6710900010L	Remote Controller
A3	6410TEW011A	Power Cord,IMO LP-22 & H05VV-F
A7	4972V00178B	Supporter,WALL FOLDING STAND ONLY

3. HDMI

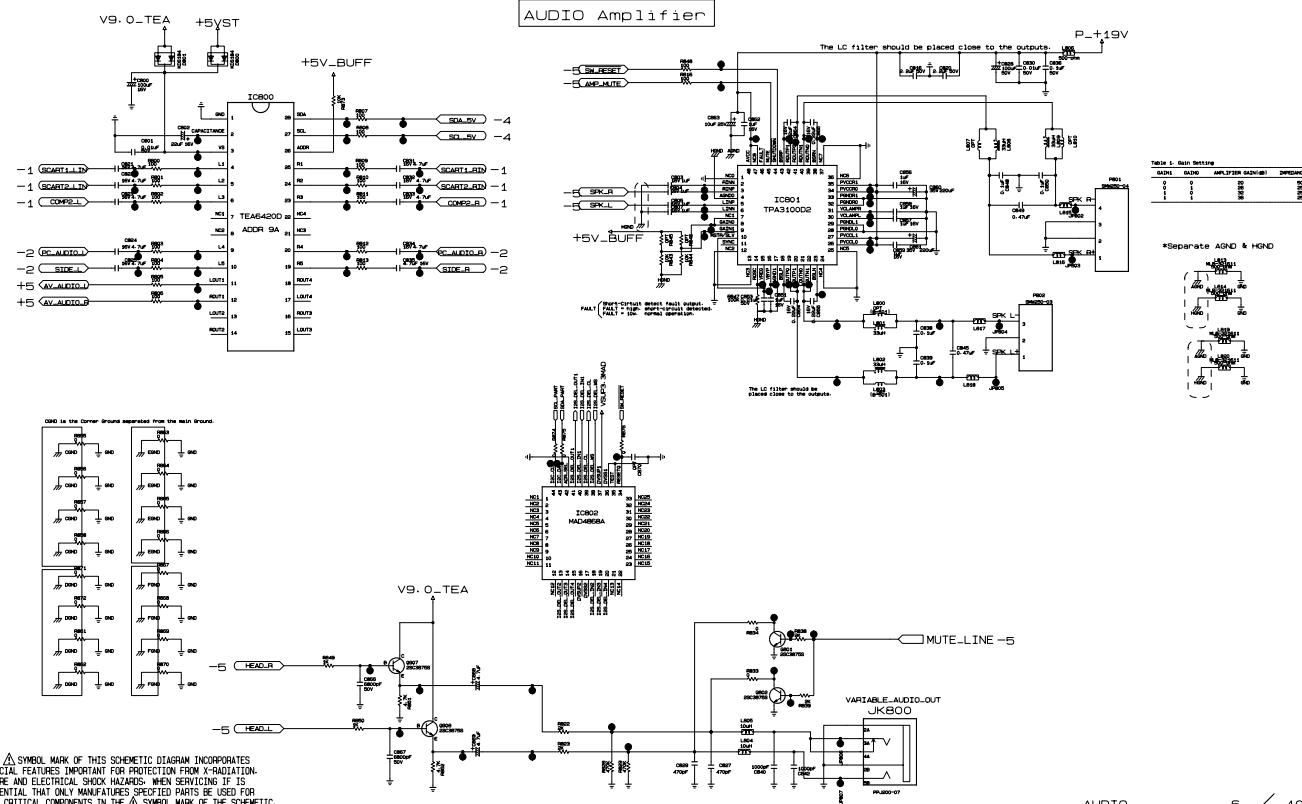
No HDMI for 48PC1R-Tu(China Only)



THE Δ SYMBOL MARK OF THIS SCHEMATIC DIAGRAM INCORPORATES SPECIAL FEATURES IMPORTANT FOR PROTECTION FROM X-RADIATION, FILTRATION AND ELECTRICAL SHOCK HAZARDS. WHEN SERVICING IF IS ESSENTIAL THAT ONLY MANUFACTURER SPECIFIED PARTS BE USED FOR THE CRITICAL COMPONENTS IN THE Δ SYMBOL MARK OF THE SCHEMATIC.

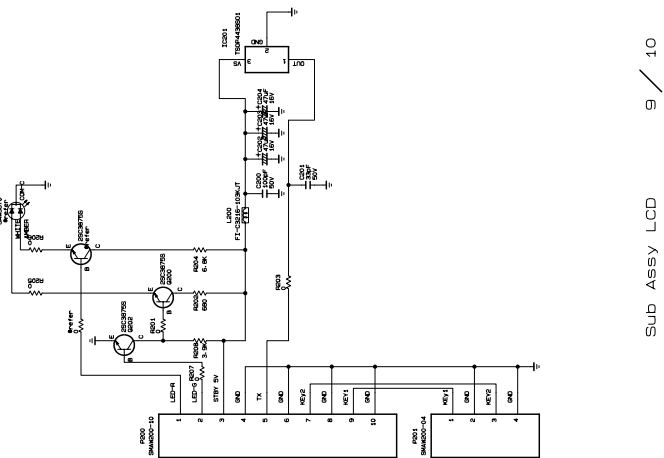
6. AUDIO

AUDIO SWITCH



THE Δ SYMBOL MARK OF THIS SCHEMATIC DIAGRAM INCORPORATES SPECIAL FEATURES IMPORTANT FOR PROTECTION FROM X-RADIATION, FILTRATION AND ELECTRICAL SHOCK HAZARDS. WHEN SERVICING IF IS ESSENTIAL THAT ONLY MANUFACTURER SPECIFIED PARTS BE USED FOR THE CRITICAL COMPONENTS IN THE Δ SYMBOL MARK OF THE SCHEMATIC.

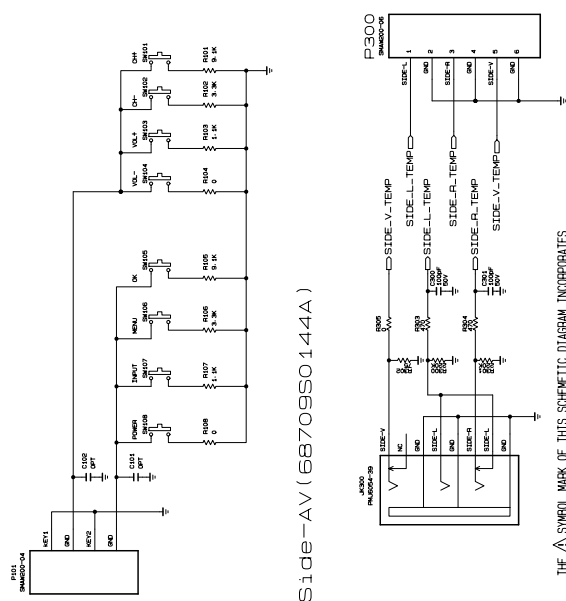
Preamp+LED (68709S0932C)



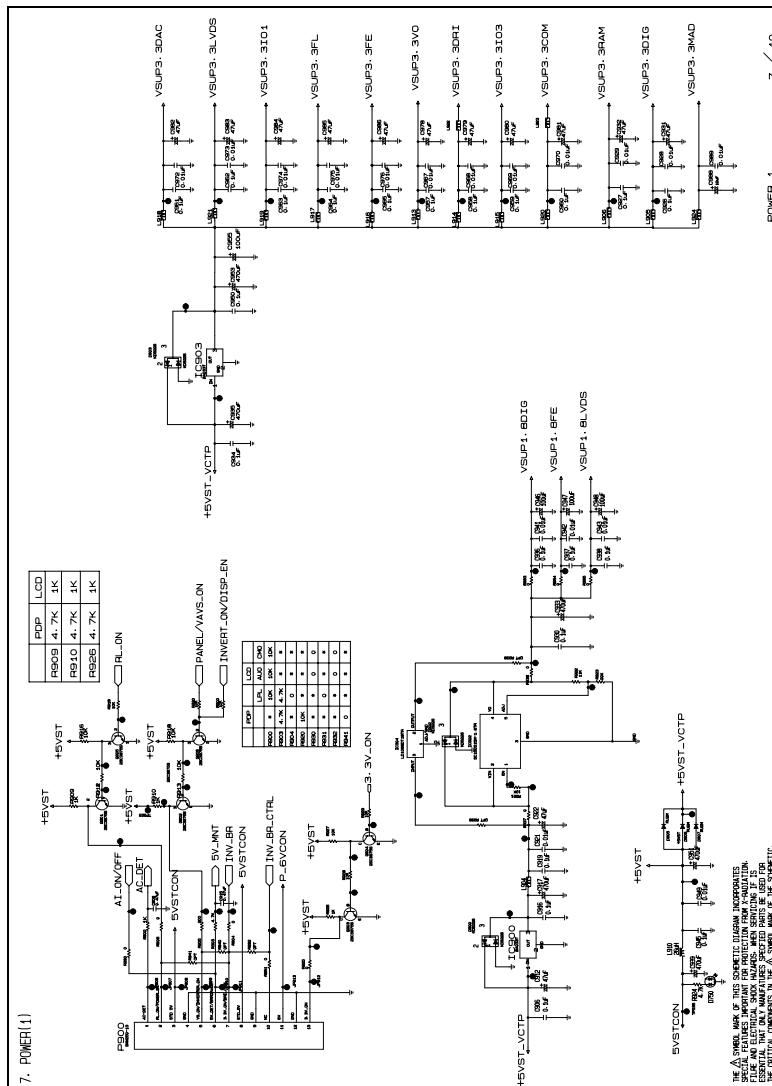
Sub Assy LCD 9 / 10

LCD SUB

Local Key (68709S0142A)



THE Δ SYMBOL MARK OF THIS SCHEMATIC DIAGRAM INCORPORATES SPECIAL FEATURES IMPORTANT FOR PROTECTION FROM X-RADIATION, FILTRATION AND ELECTRICAL SHOCK HAZARDS. WHEN SERVICING IF IS ESSENTIAL THAT ONLY MANUFACTURER SPECIFIED PARTS BE USED FOR THE CRITICAL COMPONENTS IN THE Δ SYMBOL MARK OF THE SCHEMATIC.

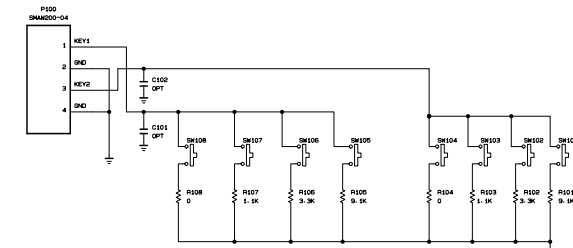


THE Δ SYMBOL MARK OF THIS SCHEMATIC DIAGRAM INCORPORATES SPECIAL FEATURES IMPORTANT FOR PROTECTION FROM X-RADIATION, FILTRATION AND ELECTRICAL SHOCK HAZARDS. WHEN SERVICING IF IS ESSENTIAL THAT ONLY MANUFACTURER SPECIFIED PARTS BE USED FOR THE CRITICAL COMPONENTS IN THE Δ SYMBOL MARK OF THE SCHEMATIC.

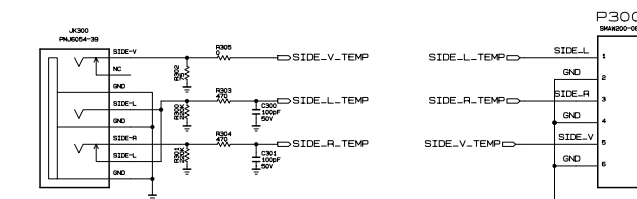
POWER 1 7 / 10

PDP SUB

LOCAL KEY (68709S0138A)

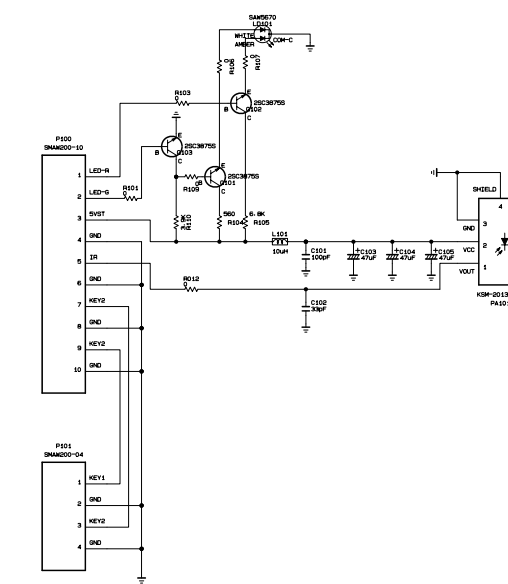


SIDE-AV (68709S0927A)



THE Δ SYMBOL MARK OF THIS SCHEMATIC DIAGRAM INCORPORATES SPECIAL FEATURES IMPORTANT FOR PROTECTION FROM X-RADIATION, FILTRATION AND ELECTRICAL SHOCK HAZARDS. WHEN SERVICING IF IS ESSENTIAL THAT ONLY MANUFACTURER SPECIFIED PARTS BE USED FOR THE CRITICAL COMPONENTS IN THE Δ SYMBOL MARK OF THE SCHEMATIC.

PREAMP+LED (68709S0178B)





P/NO : 38289S0049A

July, 2006
Printed in Korea

