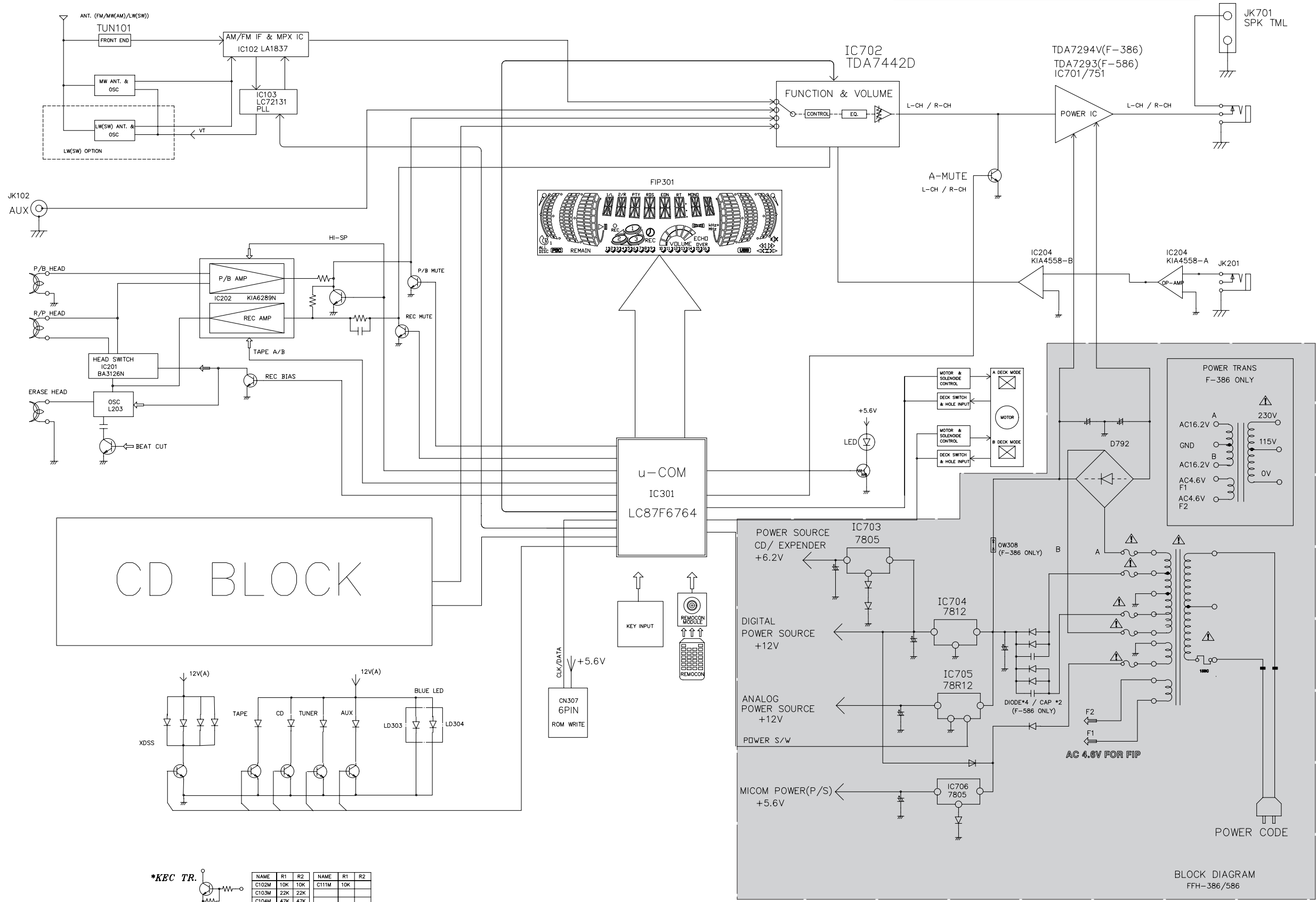


BLOCK DIAGRAM

NOTE: Warning
 ⚠️ Parts that are shaded are critical With respect to risk of fire or electrical shock.

NOTE:
 1. Shaded(■) parts are critical for safety. Replace only with specified part number.
 2. Voltages are DC-measured with a digital voltmeter during Play mode.




*KEC TR.

NAME	R1	R2	NAME	R1	R2
C102M	10K	10K	C111M	10K	
C103M	22K	22K			
C104M	47K	47K			
C110M	4.7K				

BLOCK DIAGRAM
FFH-386/586

SCHEMATIC DIAGRAMS

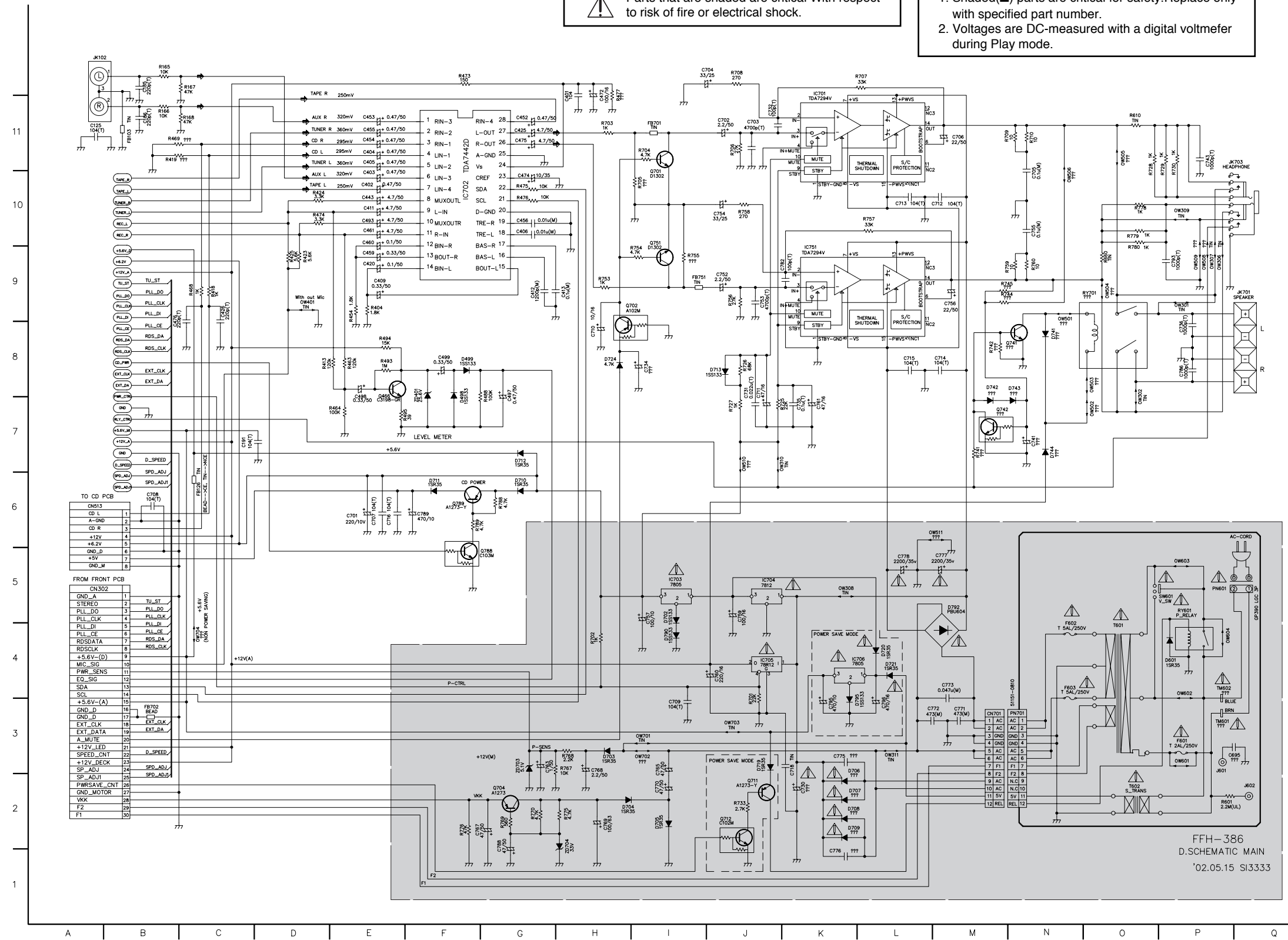
• MAIN SCHEMATIC DIAGRAM

NOTE: Warning
 Parts that are shaded are critical With respect to risk of fire or electrical shock.

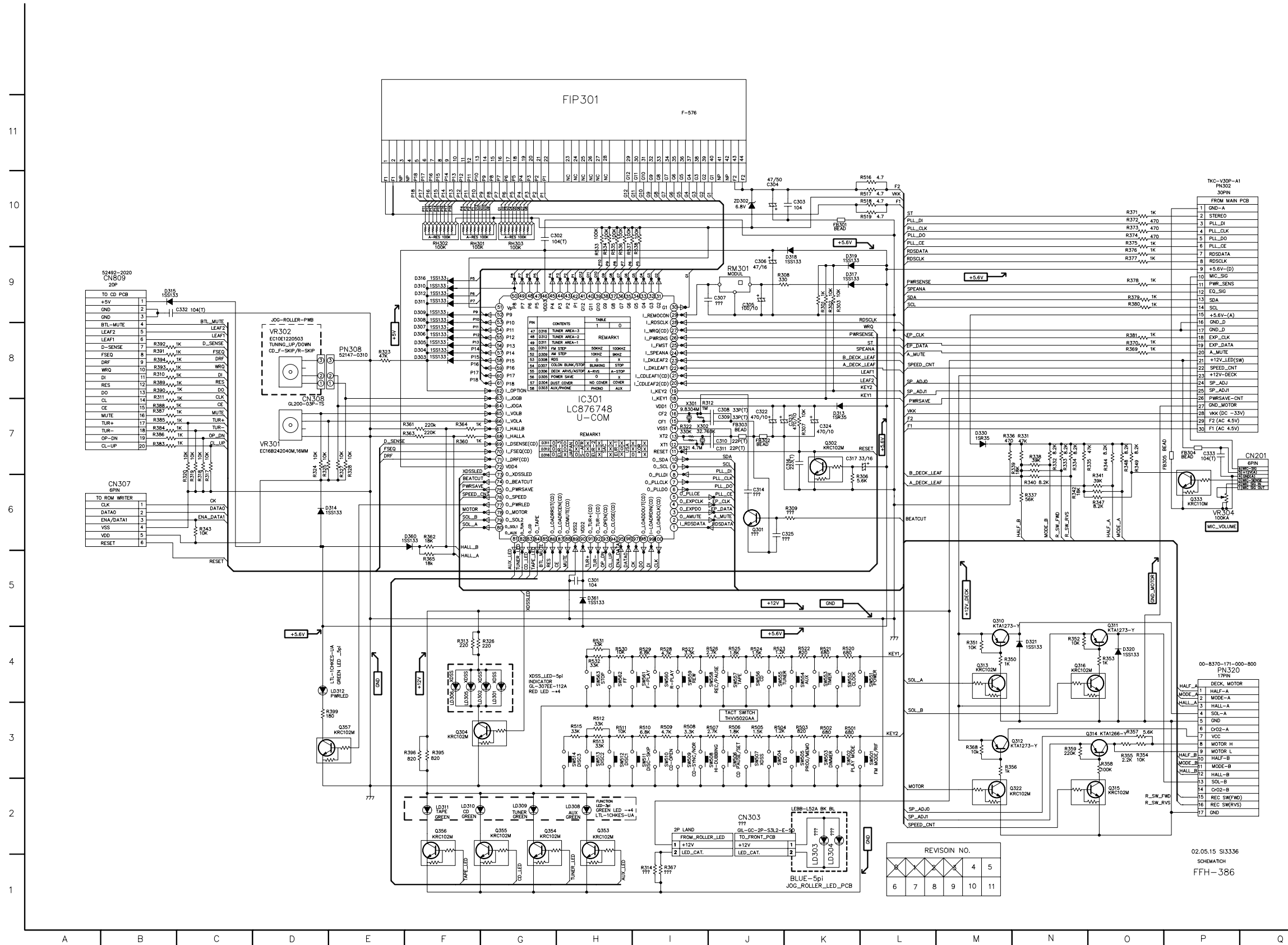
NOTE:
 1. Shaded(■) parts are critical for safety. Replace only with specified part number.
 2. Voltages are DC-measured with a digital voltmeter during Play mode.

LOCATION GUIDE

+12V_A B9	D741 N8	R495 F7
+12V_A B7	D741 N8	R601 P2
+5.6V_DB9	D742 M8	R610 O11
+5.6V_MB7	D743 N8	R660 O9
+6.2V B9	D744 N7	R701 J3
C125 A11	D790 I4	R702 H4
C185 B12	D792 M5	R703 H11
C186 B11	D795 L3	R704 I11
C191 C7	D_SPEEDB7	R705 I10
C401 H11	D_SPEEDB3	R706 J11
C402 E10	D_SPEEDB7	R707 K12
C403 E10	EXT_CLKB8	R708 H12
C404 E11	EXT_CLKB3	R709 N11
C405 E11	EXT_CLKB8	R710 N11
C406 G10	EXT_DA B8	R725 K7
C409 E9	EXT_DA B3	R726 J8
C411 E10	EXT_DA B3	R727 J7
C412 G9	F601 P3	R728 O10
C413 H9	F602 N4	R729 P10
C420 E9	F603 N4	R730 P10
C425 E10	FB103 B11	R751 J2
C426 C9	FB126 C6	R741 M7
C443 E10	FB701 I11	R742 M8
C452 G11	FB702 B3	R744 M9
C453 E11	FB751 I9	R745 H9
C454 E11	GNB B7	R752 H3
C455 E11	GNB B7	R754 H9
C456 G10	IC701 K12	R755 I9
C459 E9	IC702 F10	R756 J9
C460 E10	IC703 I5	R757 L10
C461 E10	IC704 J5	R758 J10
C472 H11	IC705 J4	R759 N9
C474 G10	IC706 K4	R760 N9
C475 G11	IC751 K9	R767 H3
C476 B8	J601 P3	R768 H3
C493 E10	J602 Q2	R769 G2
C497 G7	JK102 A12	R770 G2
C498 E7	JK701 Q9	R775 H2
C499 F8	JK703 P11	R789 F6
C695 P3	OW301 P7	R776 O10
C701 E6	OW302 O9	R779 O10
C702 J11	OW306 P9	R780 O9
C703 J11	OW307 P9	R788 G6
C704 I12	OW308 K5	R789 F6
C705 N10	OW309 P10	RDS_CLKB8
C706 M11	OW310 K7	RDS_CLKB4
C707 E6	OW311 L3	RDS_CLKB8
C708 B6	OW401 D9	RDS_DA B8
C709 I3	OW501 N9	RDS_DA B4
C710 H8	OW502 O7	RDS_DA B8
C711 J7	OW503 O8	REC_L B10
C712 L10	OW504 O9	REC_R B10
C713 L10	OW505 O11	RLY_CTRB7
C714 M8	OW506 N10	RV601 P5
C715 L8	OW508 P9	RY701 O9
C716 E6	OW509 P9	SPD_AD_B6
C718 K2	OW510 J7	SPD_AD_B3
C719 K2	OW511 L3	SPD_AD_B6
C731 J7	OW601 P3	SPD_AD_B6
C732 J11	OW602 P4	SPD_AD_B2
C734 I8	OW603 P5	SPD_AD_B6
C735 K7	OW604 P4	SW601 P5
C736 P8	OW701 I3	T601 O4
C741 N7	OW702 I3	T602 O2
C743 P11	OW703 J3	TAPE_L B10
C752 J9	OW704 C4	TAPE_R B10
C753 J9	PLL_CE B8	TM601 P3
C754 J10	PLL_CE B4	TM602 P4
C755 N10	PLL_CE B8	TUNER_LB10
C756 M9	PLL_CLKB9	TUNER_FB10
C757 I4	PLL_CLKB5	TU_ST B9
C759 J5	PLL_CLKB9	TU_ST B5
C760 J4	PLL_DI B9	TU_ST B9
C761 K7	PLL_DI B4	ZD401 F7
C763 G3	PLL_DI B9	ZD703 G3
C765 I2	PLL_DO B9	ZD704 H1
C767 F2	PLL_DO B5	
C768 H3	PLL_DO B9	
C769 H2	PN601 P5	
C770 I2	PN701 N3	
C771 M3	PWR_CTRB7	
C772 L3	Q456 E7	
C773 M4	Q701 I10	
C775 K3	Q702 H9	
C776 K1	Q704 G2	
C777 M5	Q711 J2	
C778 L5	Q712 J2	
C782 K9	Q741 M8	
C786 P8	Q742 M7	
C788 G1	Q751 I10	
C789 F6	Q788 G5	
C793 P9	Q789 F6	
C795 K3	R165 B12	
C796 L3	R166 B11	
CD_PWR B8	R167 C12	
CN302 A5	R168 C11	
CN513 A6	R404 E9	
CN701 M3	R413 D8	
D498 F7	R418 C9	
D499 F8	R419 B11	
D601 P4	R423 D9	
D702 I5	R424 D10	
D703 H3	R425 D9	
D704 H2	R454 E9	
D705 I2	R463 E8	
D706 K3	R464 E7	
D707 K2	R468 C9	
D708 K2	R469 B11	
D709 K2	R473 F12	
D710 G6	R474 D10	
D711 F6	R475 G10	
D712 G7	R476 G10	
D713 J8	R477 H11	
D719 J3	R488 G7	
D720 L4	R493 E8	
D721 L4	R494 E8	



FRONT SCHEMATIC DIAGRAM



LOCATION GUIDE

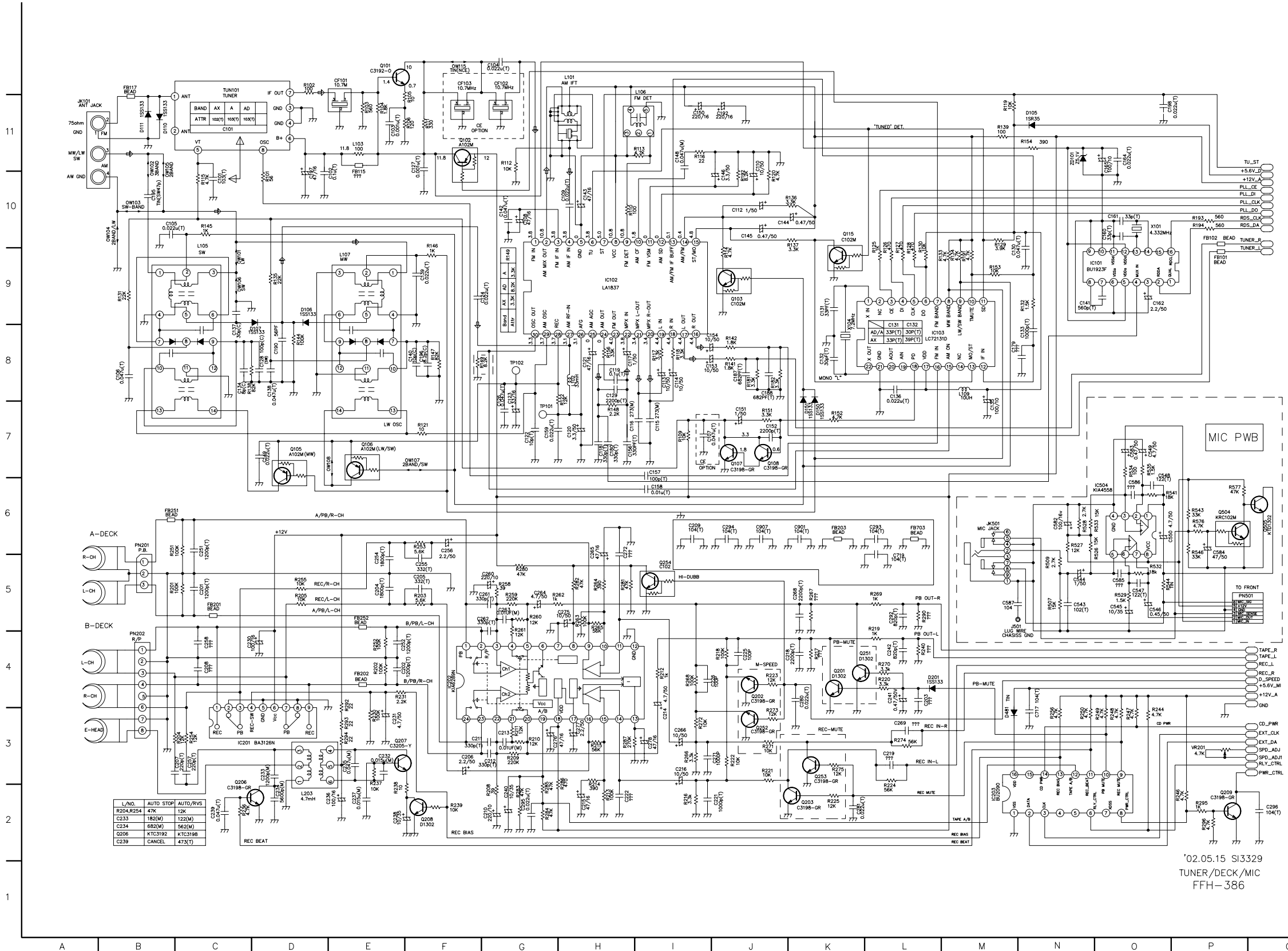
C301	H5	R306	K6	R507	I3
C302	G10	R307	K7	R508	I3
C303	K10	R308	J9	R509	I3
C304	J10	R309	K6	R510	I3
C305	J9	R310	B8	R511	H3
C306	J9	R311	B7	R512	H3
C307	J9	R312	I7	R513	H3
C308	J7	R313	F4	R514	H3
C309	J7	R314	I1	R515	L10
C310	J7	R317	C6	R517	L10
C311	J7	R318	C6	R518	L10
C314	J6	R319	C6	R519	L10
C316	K7	R320	C6	R520	K4
C317	K7	R321	I7	R521	K4
C322	J7	R322	I7	R522	K4
C323	K7	R323	E8	R523	J4
C324	K7	R324	D6	R524	J4
C325	J6	R325	D6	R525	J4
C332	B9	R326	G4	R526	J4
C333	F7	R327	E6	R527	I4
CN201	O7	R328	E6	R528	I4
CN303	J2	R331	N7	R529	I4
CN307	B6	R332	N7	R530	H4
CN308	D7	R333	N7	R531	H4
CN809	B9	R334	N7	R532	H4
D303	F8	R335	O7	R533	H9
D304	F8	R336	M7	R534	H9
D305	F8	R337	N6	R535	H9
D306	F8	R338	N7	R536	H9
D307	F8	R339	N7	R537	H9
D308	F9	R340	N6	R538	H9
D309	F9	R341	O6	R539	H9
D310	F9	R342	N6	R540	F10
D311	F9	R343	C6	RH302	F10
D312	F9	R344	O7	RH303	G10
D313	K7	R347	O6	RM301	J9
D314	D6	R348	O7	SW501	L3
D315	E9	R349	O7	SW502	K3
D316	F9	R350	M4	SW503	K3
D317	K9	R351	M4	SW504	K3
D318	K9	R352	N4	SW505	J3
D319	K9	R353	O4	SW506	J3
D320	O4	R354	O3	SW507	J3
D321	M3	R355	O3	SW508	J3
D330	M7	R356	M3	SW509	I3
D360	F6	R357	O3	SW510	I3
D361	H5	R358	O3	SW511	I3
FB301	K10	R359	N3	SW512	H3
FB302	J7	R360	F7	SW513	H3
FB303	J7	R361	E7	SW514	H3
FB304	P7	R362	F6	SW515	L4
FB305	P7	R363	E7	SW522	K4
FIP301	H11	R364	F7	SW553	K4
FSEQ	E7	R365	F5	SW554	K4
FSEQ	C8	R367	I1	SW555	J4
LD301	C3	R368	M3	SW556	J4
LD302	C3	R369	O8	SW557	J4
LD303	K1	R370	O8	SW558	J4
LD304	K1	R371	O10	SW559	I4
LD305	F3	R372	O10	SW560	I4
LD306	F3	R373	O10	SW561	I4
LD308	H2	R374	O10	SW562	H4
LD309	O2	R375	O10	SW563	H4
LD310	F2	R376	O9	VR301	D7
LD311	F2	R377	O9	VR302	D8
LD312	E4	R378	O9	VR304	P6
LEAF1	L8	R379	O9	X301	I7
LEAF1	C8	R380	O9	X302	I7
LEAF2	L8	R381	O8	XDSLED5	O5
LEAF2	C8	R383	B7	XDSLED7	F7
Q301	J6	R384	B7	ZD302	J10
Q302	K7	R385	B7		
Q304	F3	R386	B7		
Q310	M5	R387	B7		
Q311	O4	R388	B7		
Q312	N3	R389	B8		
Q313	M4	R390	B8		
Q314	N3	R391	B8		
Q315	O2	R392	B8		
Q316	H4	R393	B8		
Q322	M2	R394	B8		
Q333	P6	R395	F3		
Q353	H2	R396	F3		
Q354	G2	R399	D3		
Q355	G2	R501	K3		
Q356	F2	R502	K3		
Q357	E3	R503	K3		
R301	K9	R504	J3		
R302	K9	R505	J3		
R303	K9	R506	J3		

REVISOR NO.										
1	2	3	4	5	6	7	8	9	10	11

02.05.15 S13336
SCHEMATIC
FFH-386

TUNER/DECK/MIC SCHEMATIC DIAGRAM

LOCATION GUIDE

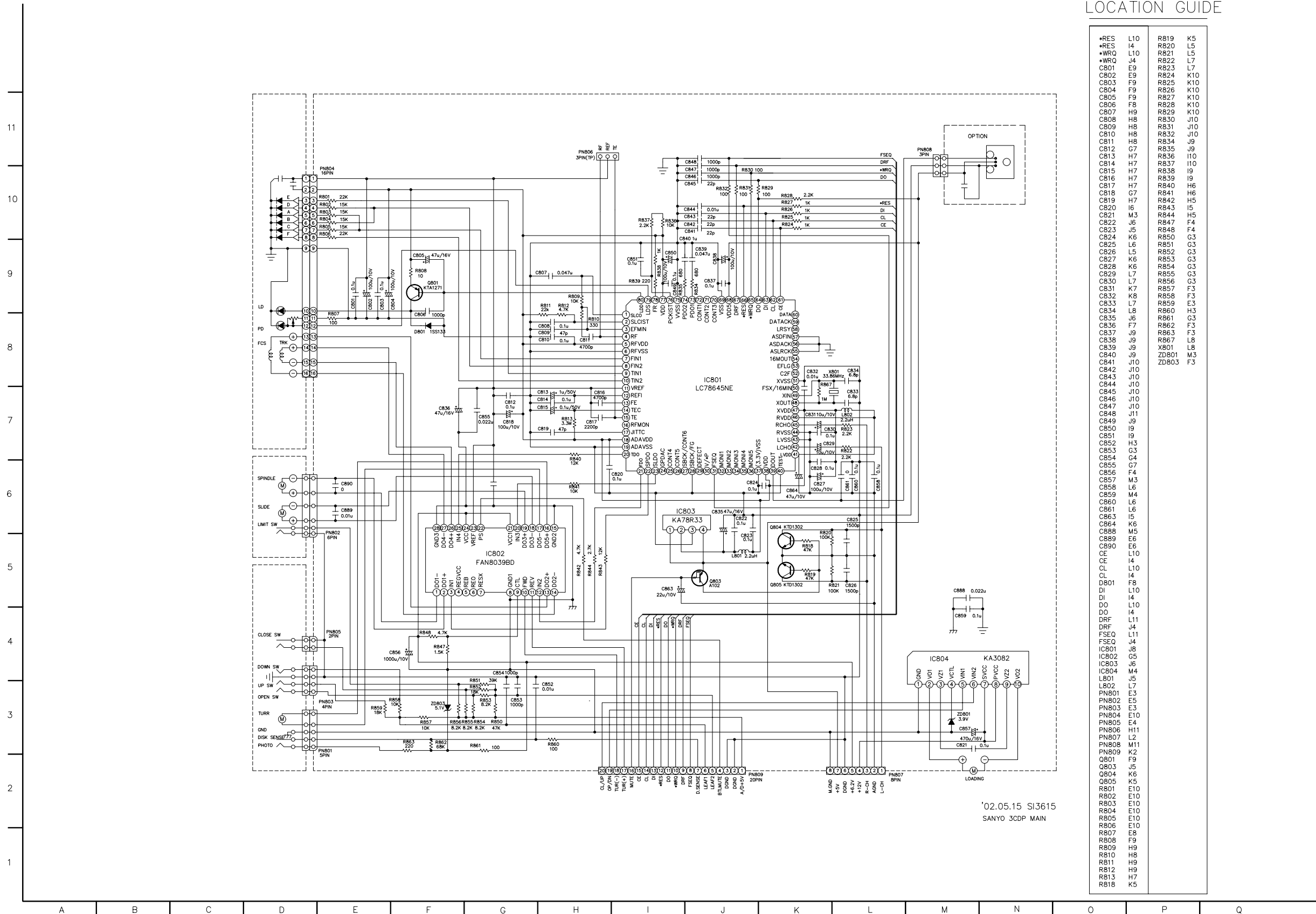


FB703 L6	C258 C4	Q209 P2	R271 J3
+12V_A P10	C260 G5	Q251 K4	R272 I3
+12V_A Q4	C261 F5	Q252 J3	R273 J3
+5.6V_DP10	C262 F5	Q253 K3	R274 L3
+5.6V_MQ4	C263 G5	Q254 I5	R275 K3
C101 C10	C264 G5	Q504 P6	R280 G5
C102 E10	C265 H5	Q505 Q6	R281 H5
C103 E11	C266 I3	R101 D10	R282 H5
C104 G12	C268 K5	R102 D12	R283 G2
C105 B10	C269 L3	R103 E11	R284 G2
C106 B8	C271 J3	R104 E11	R285 G2
C107 I7	C272 H5	R105 F11	R286 H2
C108 G10	C275 H5	R106 F11	R287 H3
C109 H10	C276 G3	R109 I7	R290 L5
C110 J1	C277 H3	R110 H10	R292 E3
C112 J0	C278 I3	R111 F11	R293 E3
C113 I8	C280 K4	R112 G11	R294 E3
C114 I8	C281 K2	R113 H11	R295 P2
C115 I7	C292 L5	R114 J9	R296 P2
C116 H7	C293 L6	R115 C10	R507 N5
C117 H8	C294 H5	R116 H11	R509 N5
C118 H7	C295 E2	R117 I8	R526 O5
C119 H8	C296 Q2	R118 I8	R527 N6
C120 H7	C543 N5	R119 M11	R528 N6
C121 H8	C544 N5	R120 J10	R529 O5
C122 G7	C545 O5	R121 F7	R532 O5
C123 C7	C546 O5	R122 H7	R533 O6
C124 G9	C547 O5	R125 L9	R534 O7
C126 G7	C548 O7	R126 L9	R535 O7
C127 F10	C549 O7	R127 L9	R541 O6
C128 D8	C550 P6	R128 L9	R543 P6
C129 H8	C562 N6	R129 M9	R544 O5
C130 M9	C563 O7	R130 L9	R546 P6
C131 K9	C584 P6	R131 B9	R576 P6
C132 K8	C585 O5	R132 M9	R577 P6
C133 N8	C586 O6	R133 M9	R586 P6
C134 C8	C587 M5	R134 M9	RDS_CLK P10
C135 M7	C717 N3	R135 D9	RDS_DA P10
C136 L8	C719 L5	R136 J9	REC_L O4
C137 C8	C901 K6	R137 J0	REC_R O4
C138 D8	C907 J6	R138 C8	RLY_CTRL Q3
C139 F9	CD_PWR Q3	R139 M11	SPD_AD_Q3
C140 F8	CF101 E12	R141 J8	SPD_AD_Q3
C141 N9	CF102 O12	R142 I8	TAPE_R O4
C142 G10	CF103 F12	R144 D8	TUN101 C12
C143 H10	D105 N11	R145 C10	TUNER_LP9
C144 J10	D106 D9	R146 F10	TUNER_FP10
C145 J10	D107 C8	R147 F8	TU_ST P11
C146 J10	D110 B11	R148 H7	VR201 P3
C147 H8	D111 B11	R149 B8	X101 O10
C149 D7	D150 K7	R151 J7	X104 K8
C150 I11	D151 K7	R152 K7	ZD101 N11
C151 J7	D201 L4	R153 M9	
C152 J7	D481 M3	R154 N11	
C153 I8	D_SPEED O4	R156 H8	
C154 I8	EXT_CLK Q3	R181 J8	
C156 H7	EXT_DA Q3	R182 J8	
C157 I7	FB101 P9	R191 M9	
C158 I6	FB102 P10	R192 J10	
C159 G7	FB115 E10	R193 J10	
C160 G10	FB117 B12	R194 O10	
C161 O10	FB201 C5	R201 E5	
C162 O9	FB202 E4	R202 B4	
C164 O11	FB203 K6	R203 F5	
C165 O10	FB251 B6	R204 C3	
C179 M8	FB252 E5	R205 D5	
C180 H7	GNND O4	R208 G2	
C187 J8	IC101 N9	R209 G3	
C188 J8	IC102 H9	R210 G3	
C190 D8	IC103 L8	R211 G3	
C192 J11	IC201 C3	R212 I4	
C193 E10	IC202 F4	R213 H2	
C196 F8	IC203 M2	R214 H2	
C197 D10	IC504 O6	R215 H3	
C198 P11	J501 M5	R216 I2	
C201 C5	JK101 A11	R217 K4	
C202 F4	JK501 M6	R218 J4	
C203 L4	L101 H12	R219 I5	
C204 E5	L102 H8	R220 L4	
C205 F5	L103 E11	R221 J3	
C206 F3	L105 C10	R222 J3	
C207 C3	L106 I12	R223 J4	
C208 C4	L107 E9	R224 L2	
C209 I6	L109 M8	R225 K2	
C210 G2	L203 D2	R230 E3	
C211 F3	OW101 C9	R231 E4	
C212 G3	OW102 B10	R236 C2	
C213 G3	OW103 B10	R237 E2	
C214 I3	OW104 B10	R238 E2	
C215 H2	OW105 B10	R239 F2	
C216 I3	OW106 C9	R240 L4	
C218 K4	OW107 F7	R244 O3	
C219 L3	OW108 E7	R246 P2	
C221 J2	OW115 F7	R247 O3	
C222 H2	PN202 B4	R248 H2	
C225 J4	PLL_CLK P10	R249 O3	
C226 J4	PLL_DI P10	R250 N3	
C230 C4	PLL_DO P10	R251 B5	
C231 E3	PN201 B6	R252 E4	
C232 E3	PN202 B4	R253 F6	
C233 O3	PN501 P5	R254 C3	
C234 D2	PWR_CTRL Q3	R255 D5	
C235 E3	Q101 E11	R256 N3	
C236 E2	Q102 F11	R258 G5	
C237 E2	Q103 J9	R259 G5	
C238 E2	Q105 D7	R260 G5	
C239 C2	Q106 F7	R261 O4	
C240 G2	Q107 J7	R262 G5	
C241 L4	Q108 J7	R263 H5	
C242 L4	Q115 K10	R264 H5	
C251 C5	Q201 K4	R265 H5	
C252 L3	Q202 J4	R266 E4	
C254 E5	Q203 K2	R267 K5	
C255 F5	Q206 C3	R268 I4	
C256 F6	Q207 E3	R269 L5	
C257 C3	Q208 F2	R270 L4	


'02.05.15 SI3329
TUNER/DECK/MIC
FFH-386

• CDP SCHEMATIC DIAGRAM

LOCATION GUIDE



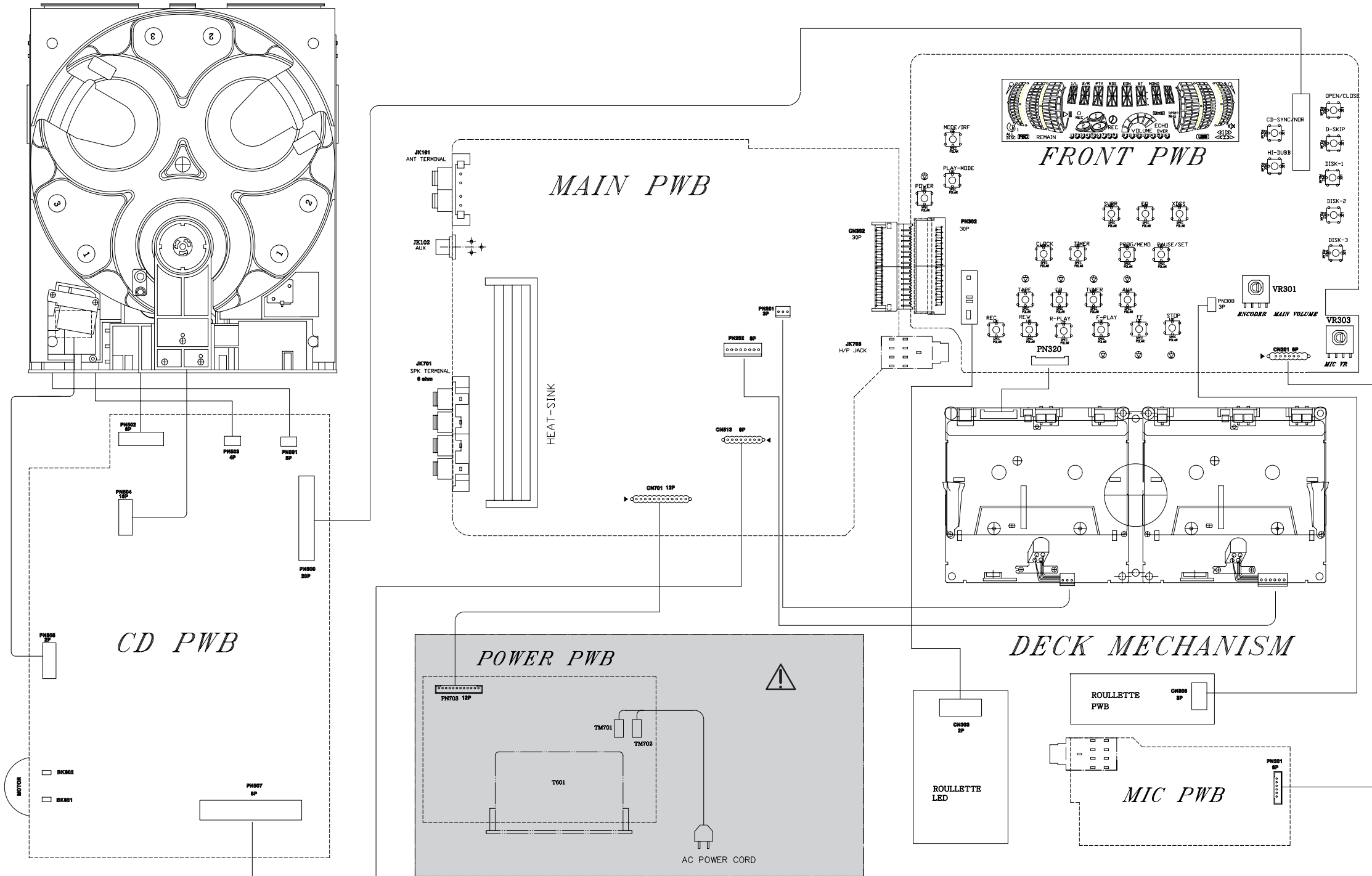
WIRING DIAGRAM

NOTE: Warning
 Parts that are shaded are critical With respect to risk of fire or electrical shock.

NOTE:
 1. Shaded(■) parts are critical for safety. Replace only with specified part number.
 2. Voltages are DC-measured with a digital voltmeter during Play mode.

3CD CHANGER MECHANISM ASSY

FFH-586/386 WIRING DIAGRAM



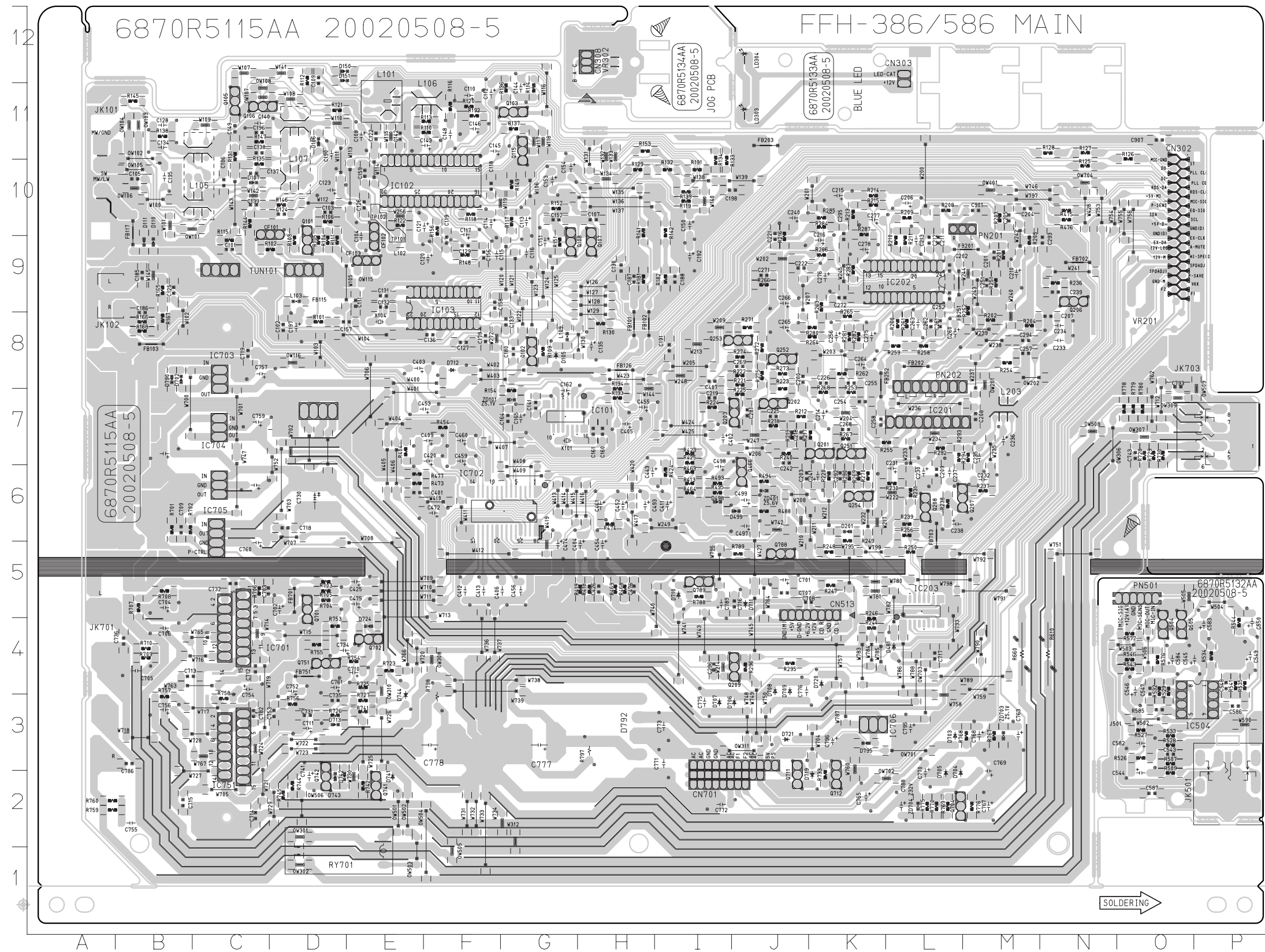
*KEC TR.

NAME	R1	R2	NAME	R1	R2
C102M	10K	10K	C111M	10K	
C103M	22K	22K			
C104M	47K	47K			
C110M	4.7K				

SCHEMATIC DIAGRAM
 FFH-586/386 WIRING DIAGRAM

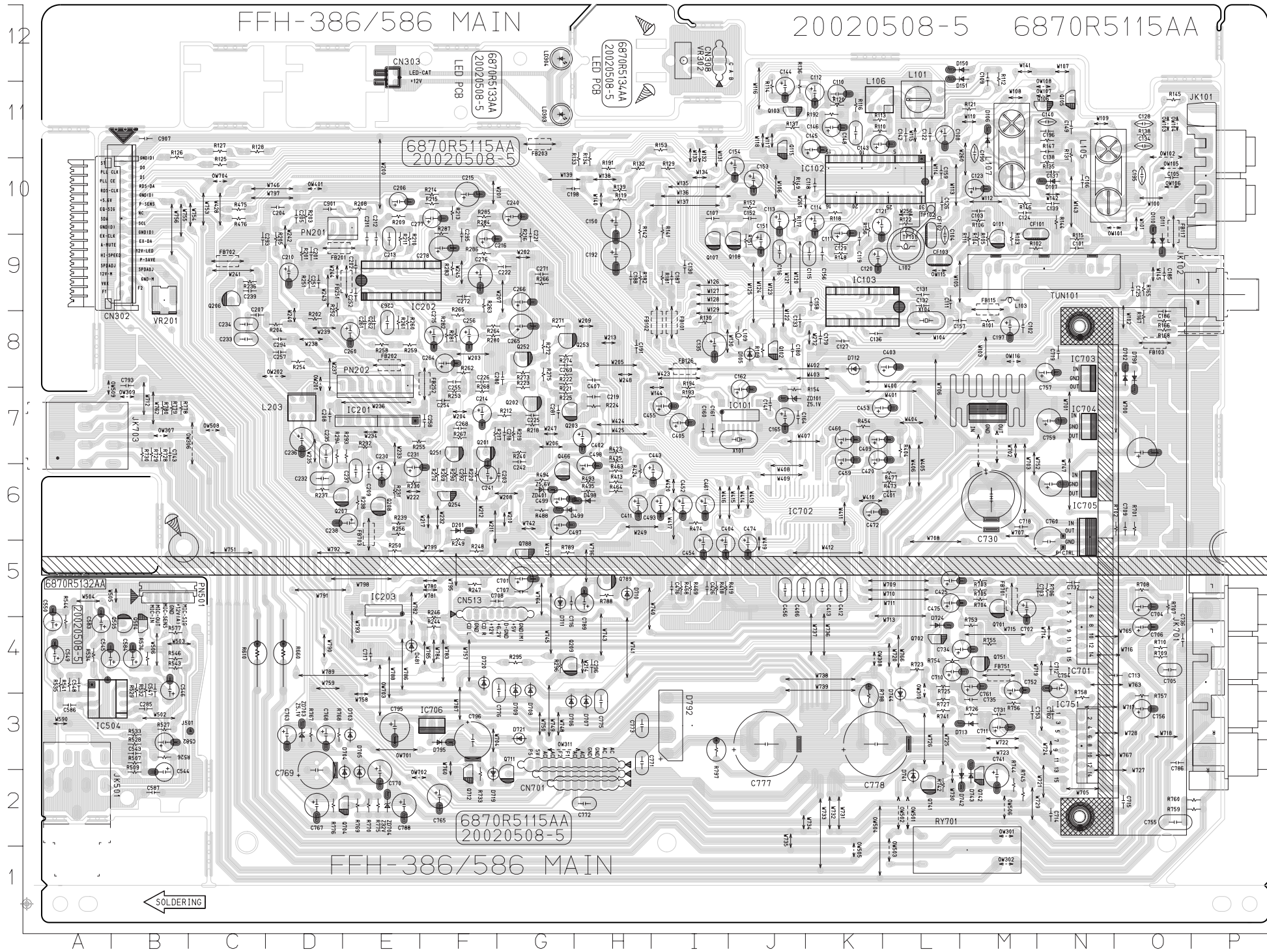
PRINTED CIRCUIT DIAGRAMS

• MAIN P.C. BOARD (SOLDER SIDE)



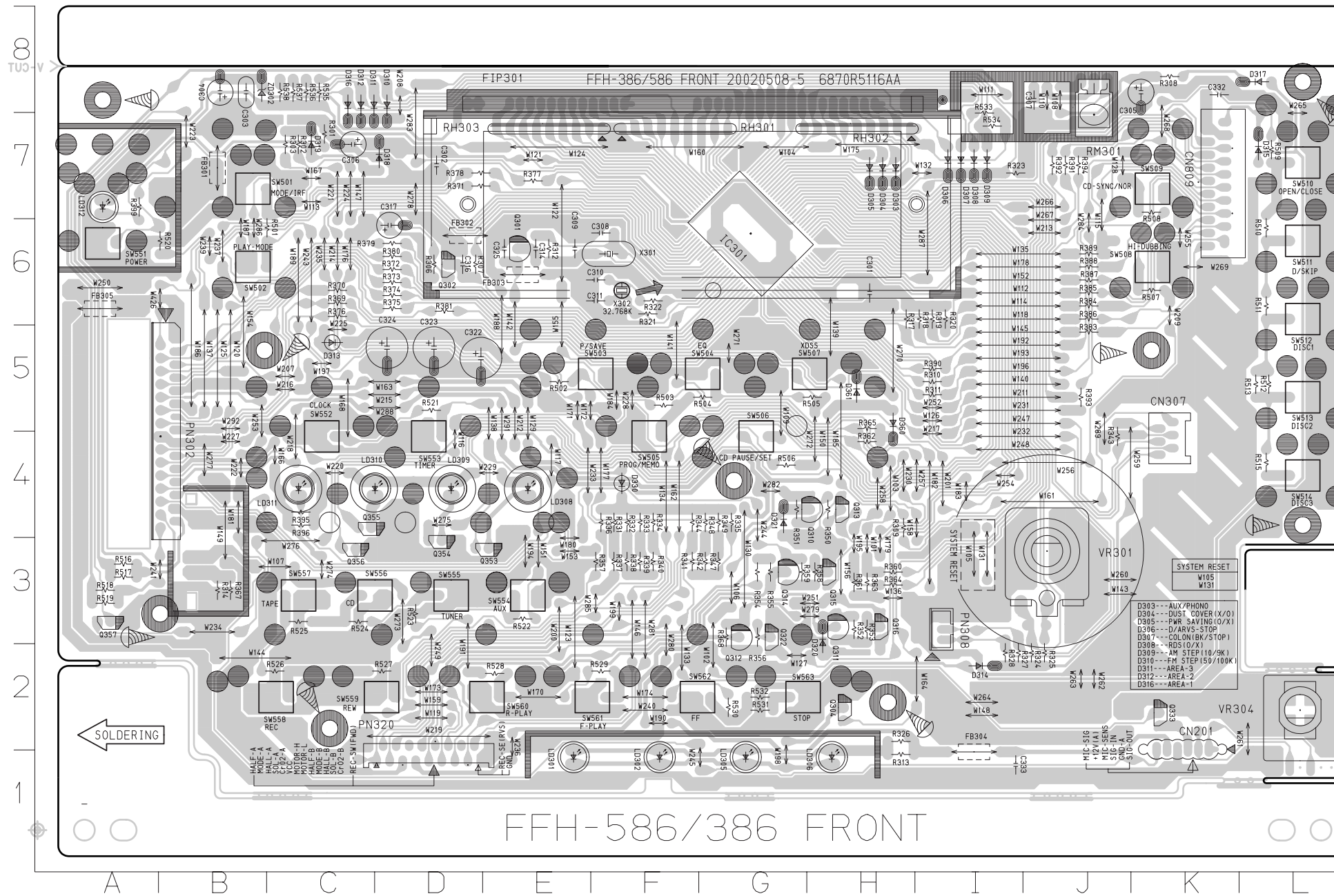
IC101	G7
IC203	L5
IC702	G6

• MAIN P.C. BOARD (COMPONENT SIDE)



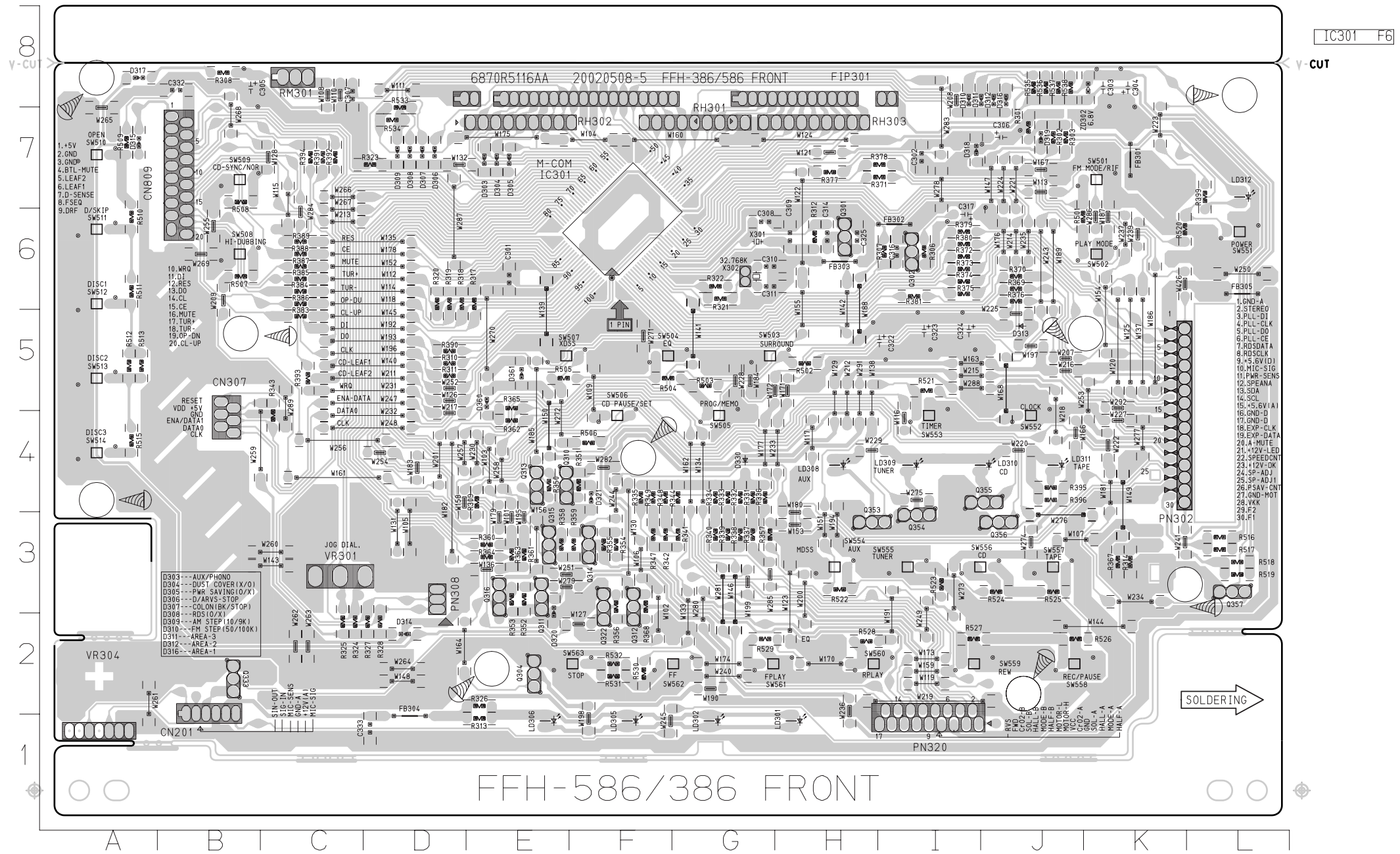
C101	N9	C204	D10	C454	I5	C788	E2	JK501	A2	Q751	M4	R220	F6	R507	B3
C102	M8	C205	D10	C455	I7	C789	H5	JK701	P4	Q788	G5	R221	G8	R509	B2
C103	M8	C206	E10	C456	J5	C793	B8	JK703	A7	Q789	H5	R222	G8	R526	B3
C104	L9	C207	C8	C459	K7	C795	E3	L101	L11	R101	M8	R223	G7	R527	B3
C105	O10	C208	D7	C460	K7	C796	F3	L102	L9	R102	M9	R224	H7	R528	B3
C106	N10	C209	E6	C461	I6	C901	D10	L103	M9	R103	M9	R225	G7	R529	B4
C107	I10	C210	D9	C472	K6	C907	B11	L105	N10	R104	M9	R230	E6	R532	B4
C108	L11	C211	E9	C474	J5	CF101	M10	L106	L11	R105	M9	R231	E6	R533	B3
C109	M12	C212	E9	C475	L5	CF102	L9	L107	M11	R106	M10	R236	C9	R534	A4
C110	K11	C213	E9	C476	I5	CF103	L9	L109	J8	R109	J8	R237	D6	R535	A4
C111	L9	C214	F7	C493	I6	CN302	B10	L203	D7	R110	K11	R238	E6	R541	A4
C112	K11	C215	F10	C497	G6	CN303	E12	LD303	G11	R111	M9	R239	E6	R543	A4
C113	J10	C216	F9	C498	H6	CN308	I12	LD304	G12	R112	M12	R240	G7	R544	A4
C114	K10	C218	G7	C499	G6	CN513	F5	OW101	O10	R113	K11	R244	F4	R546	B4
C115	K9	C219	H7	C543	B3	ON701	H3	OW102	O11	R114	J11	R246	F4	R546	B4
C116	J9	C221	G9	C544	B2	D105	J8	OW103	O11	R115	N9	R247	F5	R577	B4
C117	K10	C222	G9	C545	A4	D106	M1	OW104	O11	R116	K11	R248	F5	R585	B3
C118	K10	C225	G7	C546	B4	D107	N10	OW105	O10	R117	J10	R249	F5	R610	C4
C119	K9	C226	F8	C547	B4	D110	O9	OW106	O10	R118	K10	R250	E5	R660	D4
C120	K9	C230	E6	C548	A4	D111	O9	OW107	N11	R119	H10	R251	D9	R701	O6
C121	K10	C231	E6	C549	A4	D150	M12	OW108	N11	R120	K11	R252	D9	R702	O6
C122	L11	C232	D6	C550	A4	D151	M12	OW115	L9	R121	M11	R253	F7	R703	M5
C123	M10	C233	C8	C582	B3	D201	F6	OW116	M8	R122	L10	R254	D8	R704	M5
C124	M10	C234	C8	C583	A4	D481	E4	OW201	D8	R125	C10	R255	E7	R705	M5
C125	O9	C235	D7	C584	B4	D498	H6	OW202	D8	R126	B10	R256	E6	R706	M5
C126	L10	C236	D7	C586	A3	D499	G6	OW301	M2	R127	C11	R258	E8	R707	O5
C127	K8	C237	E6	C587	B2	D702	O8	OW302	M1	R128	C11	R259	E8	R708	O5
C128	O10	C238	E6	C701	G5	D703	E3	OW306	C7	R129	I10	R260	E8	R709	O4
C129	K9	C239	C9	C702	M5	D704	E2	OW307	B7	R130	I8	R261	E8	R710	O4
C130	I9	C240	G10	C703	N5	D705	E2	OW308	K4	R131	N11	R262	F8	R723	L4
C131	L9	C241	F6	C704	O5	D706	G3	OW309	B7	R132	H10	R263	F9	R725	L4
C132	L9	C242	G7	C705	O4	D707	H3	OW310	L4	R133	H10	R264	F8	R726	M3
C133	J8	C251	D9	C706	O4	D708	G4	OW311	G3	R134	H10	R265	F8	R727	L3
C134	O11	C252	E9	C707	G5	D709	G4	OW401	D10	R135	N10	R266	G9	R728	B7
C135	I8	C254	F7	C708	G5	D710	H5	OW501	L2	R136	J11	R267	F7	R729	B7
C136	K8	C255	F8	C709	O6	D711	G5	OW502	L2	R137	J11	R268	F7	R730	B7
C137	N10	C256	F8	C710	L4	D712	K8	OW503	L1	R138	O11	R269	F6	R733	F2
C138	N11	C257	D8	C711	M3	D713	M3	OW504	K2	R139	H10	R270	F6	R741	L3
C139	N10	C258	F7	C712	N4	D719	F2	OW505	K1	R141	I10	R271	G8	R742	L2
C140	N11	C260	E8	C713	O4	D720	F4	OW506	M2	R142	H10	R272	G8	R744	M2
C141	J7	C261	E8	C714	N2	D721	G3	OW508	C7	R144	N10	R273	G8	R745	M2
C142	L11	C262	E8	C715	O2	D724	L4	OW509	A7	R145	O11	R274	G8	R753	M4
C143	K11	C263	E8	C716	G5	D741	L2	OW701	E3	R146	M10	R275	G8	R754	L4
C144	J11	C264	F8	C717	E4	D742	M2	OW702	E2	R147	N11	R280	F8	R755	M4
C145	K11	C265	G8	C718	M6	D743	M2	OW703	E4	R148	K9	R281	F8	R756	M3
C146	K11	C266	G9	C719	N8	D744	L3	OW704	C10	R149	J10	R282	F8	R757	O3
C148	K11	C268	F7	C730	M6	D790	O8	PN201	E10	R151	J9	R283	F9	R758	N3
C149	N11	C269	G8	C731	M3	D792	I3	PN202	E8	R152	J10	R284	F10	R759	P2
C150	H10	C271	G9	C732	N5	D795	F3	PN501	B5	R153	I11	R285	F10	R760	P2
C151	J9	C272	F9	C734	M4	FB101	I8	Q101	M9	R154	J7	R286	F9	R767	D3
C152	J10	C275	F8	C735	M3	FB102	I8	Q102	J8	R156	K10	R287	F10	R768	D3
C153	J10	C276	F9	C736	O4	FB103	O8	Q103	J11	R165	O9	R290	F6	R769	E2
C154	J10	C277	F10	C741	M2	FB115	M9	Q105	N11	R166	O8	R292	E7	R770	E2
C155	K9	C278	F9	C743	B7	FB117	O10	Q106	N11	R167	O8	R293	E7	R775	E2
C157	M8	C280	G8	C752	M4	FB126	I8	Q107	I9	R168	O8	R294	D7	R776	D2
C158	K9	C281	G7	C753	M3	FB201	D9	Q108	J9	R181	I9	R295	G4	R778	B7
C159	L10	C292	F6	C754	N4	FB202	E8	Q115	J11	R182	H9	R296	G4	R779	B7
C160	I7	C293	C9	C755	O2	FB203	G11	Q201	F7	R191	H10	R404	L7	R780	B7
C161	I7	C294	D8	C756	O3	FB251	E9	Q202	G7	R192	K11	R413	H6	R788	H5
C162	J7	C295	F9	C757	N8	FB252	F8	Q203	G7	R193	I7	R418	I5	R789	G5
C164	J7	C296	H4	C759	N7	FB701	M5	Q206	C9	R194	I7	R419	I5	R797	I3
C165	J7	C401	L6	C760	N5	FB702	C9	Q207	E6	R201	D9	R423	H7	R798	K3
C179	K8	C402	H7	C761	M4	FB703	E6	Q208	E6	R202	D8	R424	H6	RY701	M1
C180	J8	C403	L8	C763	D3	FB751	M4	Q209	G4	R203	D10	R425	H7	TUN101	N9
C185	O9	C404	I5	C765	F2	IC102	L10	Q251	F7	R204	D8	R454	K7	VR201	B9
C186	O8	C405	I7	C767	D2	IC103	L9	Q252	G8	R205	D9	R463	H6	VR302	I12
C187	I9	C406	J5	C768	D3	IC201	E7	Q253	G8	R208	E10	R464	H6	X101	J7
C188	H9	C407	H8	C769	D2	IC202	E9	Q254	F6	R209	E10	R468	I5	X104	L8
C190	M11	C409	K7	C770	E2	IC504	A4	Q466	G6	R210	E9	R469	I5	ZD101	J7
C191	H8	C411	H6	C771	H3	IC701	N4	Q504	B4	R211	E9	R473	L6	ZD401	G6
C192	H9	C412	K5	C772	H2	IC703	N8	Q505	B4	R212	G7	R474	I6	ZD703	O3
C195	O10	C413	K5	C773	H3	IC704	N7	Q701	M5	R213	F10	R475	C10	ZD704	E2
C196	N11	C420	K7	C775	H3	IC705	N6	Q702	L4	R214	F10	R476	C10		
C197	M8	C425	L5	C776	G4	IC706	F3	Q704	E2	R215	F10	R477	L6		
C198	G10	C426	I5	C777	J3	IC751	N3	Q711	G2	R216	G9	R488	G6		
C201	D9	C443	I6	C778	K3	J501	C3	Q712	F2	R217	F7	R493	H6		
C202	E9	C452	I6	C782	N3	JK101	P10	Q741	L2	R218	F7	R494	G6		
C203	G6	C453	K7	C786	O3	JK102	P9	Q742	M2	R219	G7	R495	H6		

• FRONT P.C. BOARD(COMPONENT SIDE)



C301	H6	FB304	I1	R321	F6	R374	D6	R527	D2
C302	D7	FB305	A6	R322	F6	R375	D6	R528	E2
C303	B8	FIP301	I8	R323	I7	R376	C6	R529	F2
C304	B8	LD301	E1	R324	J2	R377	E7	R530	G2
C305	K8	LD302	F1	R325	J2	R378	D7	R531	G2
C306	C7	LD305	G1	R326	H2	R379	D6	R532	G2
C307	J8	LD306	H1	R327	I2	R380	D6	R533	I7
C308	F6	LD308	E4	R328	I2	R381	D6	R534	I7
C309	E6	LD309	D4	R331	F4	R383	J5	R535	C8
C310	F6	LD310	D4	R332	F4	R384	J6	R536	C8
C311	F6	LD311	C4	R333	F4	R385	J6	R537	C8
C314	E6	LD312	A7	R334	F4	R386	J6	R538	C8
C316	D6	PN302	B4	R335	G4	R387	J6	RH301	F7
C317	D6	PN308	I3	R336	F4	R388	J6	RH302	H7
C322	D5	PN320	D1	R337	F3	R389	J6	RH303	F7
C323	D5	Q301	E6	R338	F3	R390	I5	RM301	J7
C324	D5	Q302	D6	R339	F3	R391	J7	SW501	B7
C325	E6	Q304	H2	R340	F3	R392	J7	SW502	B6
C332	K8	Q310	H4	R341	F3	R393	J5	SW503	F5
C333	I1	Q311	H3	R342	G3	R394	J7	SW504	G5
CN201	K2	Q312	G3	R343	J4	R395	C4	SW505	F4
CN307	K4	Q313	H4	R344	F4	R396	C4	SW506	G4
CN809	K6	Q314	G3	R347	G3	R399	A7	SW507	H5
D303	H7	Q315	H3	R348	G4	R501	C6	SW508	K6
D304	H7	Q316	H3	R349	G4	R502	E5	SW509	K7
D305	H7	Q322	G3	R350	H4	R503	F5	SW510	L7
D306	I7	Q333	K2	R351	G4	R504	G5	SW511	L6
D307	I7	Q353	E3	R352	H3	R505	H5	SW512	L6
D308	I7	Q354	D3	R353	H3	R506	G4	SW513	L5
D309	I7	Q355	C4	R354	G3	R507	K6	SW514	L4
D310	D8	Q356	C3	R355	G3	R508	K7	SW551	A6
D311	C8	Q357	A3	R356	G3	R509	L7	SW552	C4
D312	C8	R301	C7	R357	F3	R510	L6	SW553	D4
D313	C5	R302	C7	R358	H3	R511	L6	SW554	E3
D314	I2	R303	C7	R359	G3	R512	L5	SW555	D3
D315	L7	R306	D6	R360	H3	R513	L5	SW556	D3
D316	C8	R307	D6	R361	H3	R515	L4	SW557	C3
D317	L8	R308	K8	R362	H4	R516	A3	SW558	C2
D318	D7	R309	H4	R363	H3	R517	A3	SW559	D2
D319	C7	R310	I5	R364	H3	R518	A3	SW560	E2
D320	H3	R311	I5	R365	H5	R519	A3	SW561	F2
D321	G4	R312	E6	R367	B3	R520	B6	SW562	F2
D330	F4	R313	H1	R368	G3	R521	D5	SW563	G2
D360	H5	R314	B3	R369	C6	R522	E3	VR301	J3
D361	H5	R317	H6	R370	C6	R523	D3	VR304	L2
FB301	B7	R318	I6	R371	D7	R524	C3	X301	F6
FB302	D6	R319	I6	R372	D6	R525	C3	X302	F6
FB303	E6	R320	I6	R373	D6	R526	C2	ZD302	B8

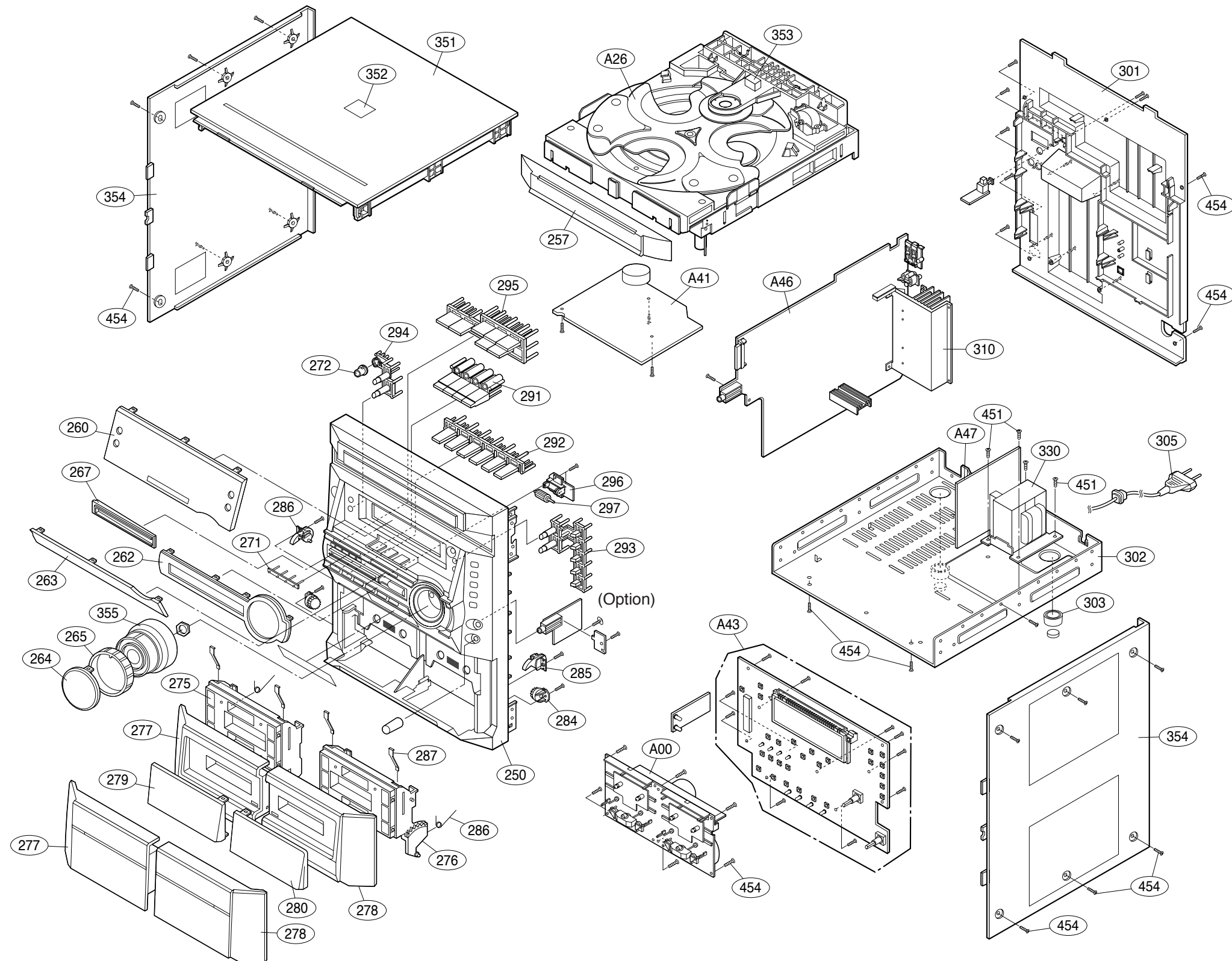
• FRONT P.C. BOARD(SOLDER SIDE)



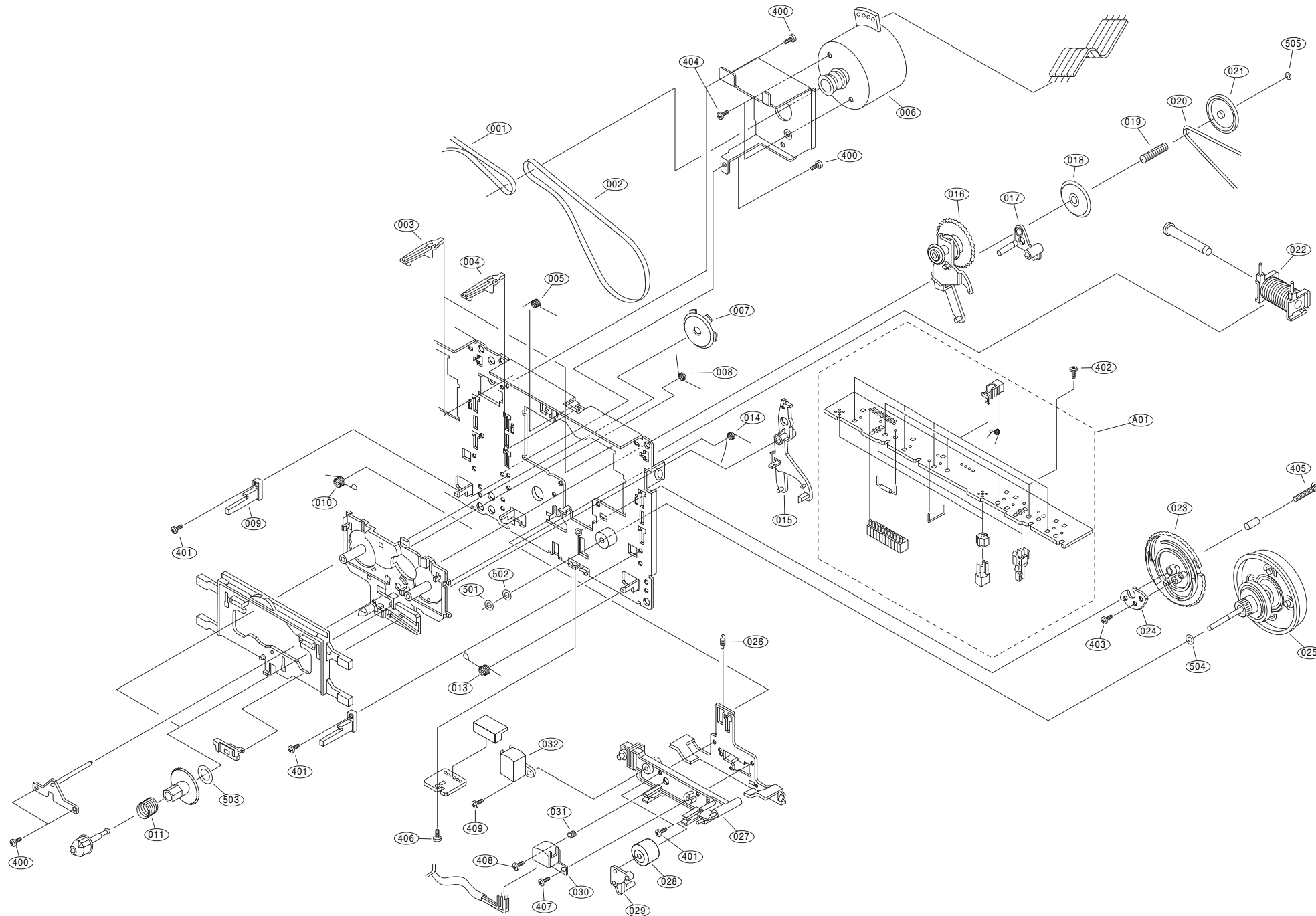
SECTION 3. EXPLODED VIEWS

• CABINET AND MAIN FRAME SECTION

NOTE) Refer to "SECTION 5 REPLACEMENT PARTS LIST" in order to look for the part number of each part.

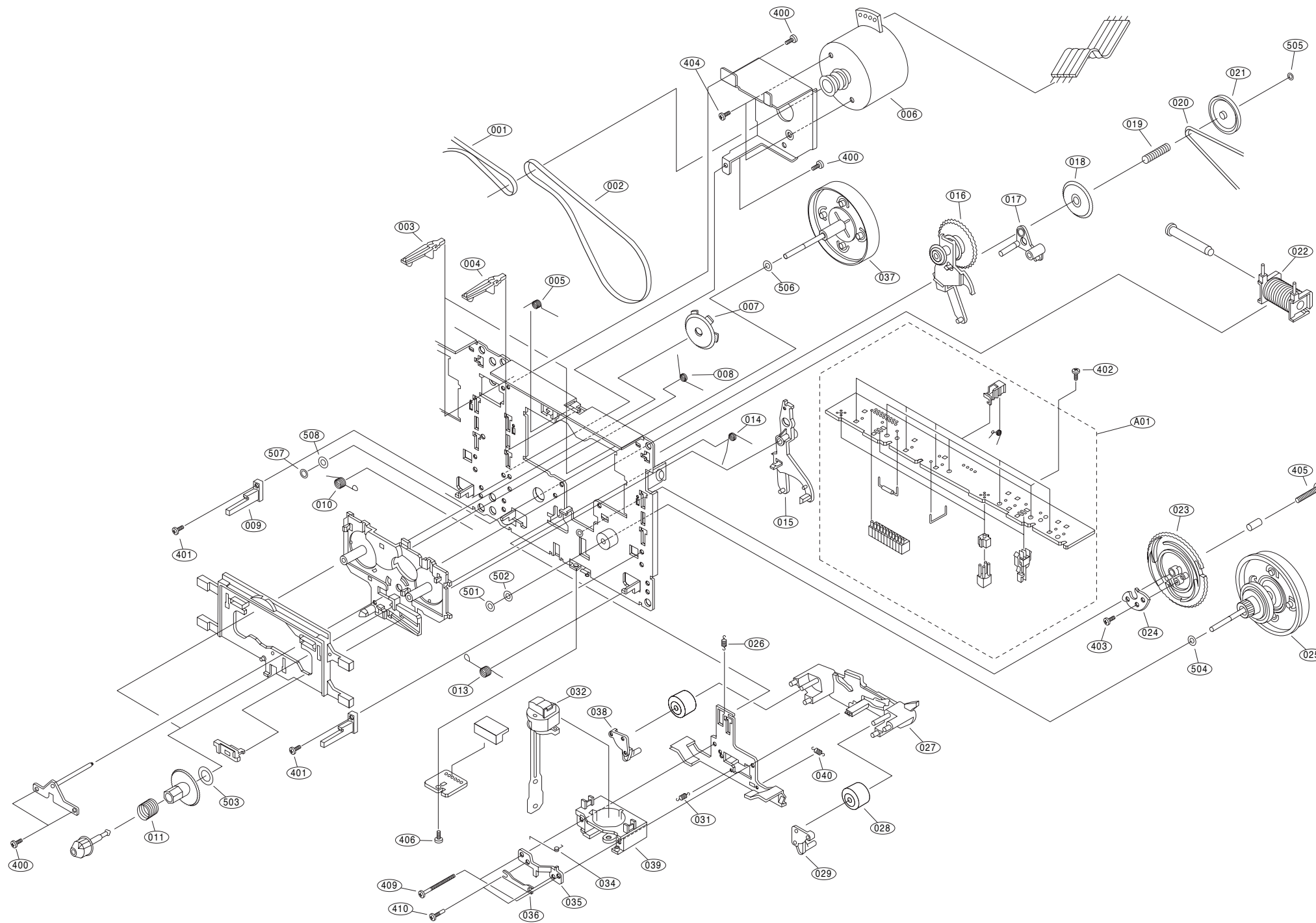


• TAPE DECK MECHANISM: AUTO STOP DECK(OPTIONAL)



LOCA. NO	PART NO.	SPECIFICATION
A00	6730R-G007A	CWL44FF25 TOKYO PIGEON L-DOUBL
A01	6768R-UP01A	50-093-4249 PIGEON UNIT PCB AS
001	6768R-BP01B	02-084-4202 PIGEON BELT / FELT C
002	6768R-BP01A	02-084-4204 PIGEON BELT / FELT C
003	6768R-AP01D	50-239-4027 PIGEON ARM CWL44
004	6768R-AP01E	50-239-4026 PIGEON ARM CWL44
005	6768R-SP01E	01-082-4599 PIGEON SPRING CWL4
006	6768R-QP01A	50-093-4316 PIGEON MOTOR(ASSY)
007	6768R-GP01A	50-093-4063 PIGEON GEAR CWL44
008	6768R-SP01F	01-082-4598 PIGEON SPRING CWL4
009	6768R-MP01C	50-219-4014 PIGEON MOLD CWL44
010	6768R-SP01C	01-082-4652 PIGEON SPRING CWL4
011	6768R-SP01A	01-081-4601 PIGEON SPRING CWL4
013	6768R-SP01B	01-082-4651 PIGEON SPRING CWL4
014	6768R-SP01G	01-082-4597 PIGEON SPRING CWL4
015	6768R-AP01A	50-268-3016 PIGEON ARM CWL44
016	6768R-GP01C	50-093-4069 PIGEON GEAR CWL44
017	6768R-AP01C	50-239-4072 PIGEON ARM CWL44
018	6768R-GP01D	50-222-4007 PIGEON GEAR CWL44
019	6768R-SP01H	01-081-4657 PIGEON SPRING CWL4
020	6768R-BP01C	02-083-4188 PIGEON BELT / FELT C
021	6768R-LP01A	50-223-4254 PIGEON PULLEY / FLYW
022	6768R-VP01A	50-093-4125 PIGEON SOLENOID CW
023	6768R-GP01B	50-221-3009 PIGEON GEAR CWL44
024	6768R-AP01B	50-139-4292 PIGEON ARM CWL44
025	6768R-JP01B	50-093-3361 PIGEON PULLEY / FLYW
026	6768R-SP01D	01-080-4609 PIGEON SPRING CWL4
027	6768R-MP01B	50-093-3036 PIGEON MOLD CWL44
028	6768R-RP01A	22-027-41054 PIGEON ROLLER CWL
029	6768R-MP01A	50-219-4033 PIGEON MOLD CWL44
030	6768R-HP01A	TC881CB067B PIGEON HEAD CWL44
031	6768R-SP01J	01-081-4605 PIGEON SPRING CWL4
032	6768R-HP01B	TC231F PIGEON HEAD CWL44
033	6768R-JP01A	50-093-3360 PIGEON PULLEY / FLYW
400	6768R-CP01A	GSE10A2003 PIGEON SCREW CWL44
401	6768R-CP01B	GSE20A2005 PIGEON SCREW CWL44
402	6768R-CP01C	GSE10A2004 PIGEON SCREW CWL44
403	6768R-CP01D	GSL10A1704 PIGEON SCREW CWL44
404	6768R-CP01E	GSP10A2603 PIGEON SCREW CWL44
405	6768R-CP01F	GSP11A2012 PIGEON SCREW CWL44
406	6768R-CP01G	GSE20A2004 PIGEON SCREW CWL44
407	6768R-CP01H	GSL20A2005 PIGEON SCREW CWL44
408	6768R-CP01J	03-300-4127 PIGEON SCREW CWL44
409	6768R-CP01K	GSL20A2008 PIGEON SCREW CWL44
501	6768R-WP01A	GWM19S035035 PIGEON WASHER CWL
502	6768R-WP01B	GWM17S050035S PIGEON WASHER CW
503	6768R-WP01C	GWM40X075010 PIGEON WASHER CWL
504	6768R-WP01D	GWP21X045020 PIGEON WASHER CWL
505	6768R-WP01E	GWP12X030040S PIGEON WASHER CW

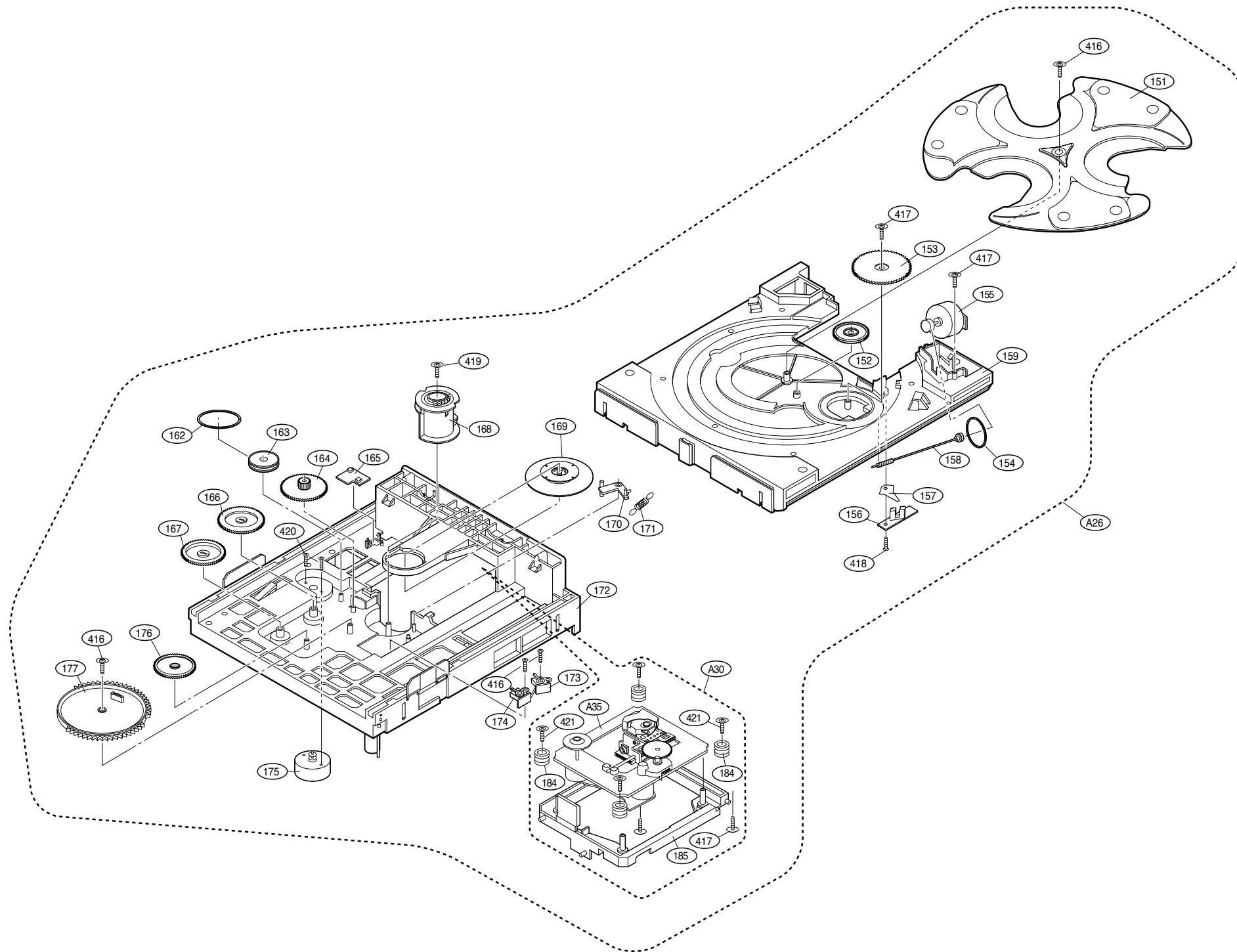
• TAPE DECK MECHANISM: AUTO REVERSE DECK



LOCA. NO	PART NO.	SPECIFICATION
A00	6730R-G007B	CDM-H1323 CD CHAN
A01	6768R-UP01A	50-093-4249 PCB AS
001	6768R-BP01B	02-084-4202 BELT/FELT
002	6768R-BP01A	02-084-4204 BELT/FELT
003	6768R-AP01D	50-239-4027 CWL44
004	6768R-AP01E	50-239-4026 ARM
005	6768R-SP01E	01-082-4654 SPRING
006	6768R-QP01A	50-093-4316 MOTOR
007	6768R-GP01A	50-093-4063 GEAR
008	6768R-SP01F	01-082-4598 SPRING
009	6768R-MP01C	50-219-4014 MOLD
010	6768R-SP01C	01-082-4652 SPRING
011	6768R-SP01A	01-081-4601 SPRING
013	6768R-SP01B	01-082-4651 SPRING
014	6768R-SP01G	01-082-4597 SPRING
015	6768R-AP01A	50-268-3016 ARM
016	6768R-GP01C	50-093-4069 GEAR
017	6768R-AP01C	50-239-4072 ARM
018	6768R-GP01D	50-222-4007 GEAR
019	6768R-SP01H	01-081-4657 SPRING
020	6768R-BP01C	02-083-4188 BELT/FELT
021	6768R-LP01A	50-223-4254 PULLEY
022	6768R-VP01A	50-093-4125 SOLENOID
023	6768R-GP01B	50-221-3009 GEAR
024	6768R-AP01B	50-139-4292 ARM
025	6768R-JP01B	50-093-3361 PULLEY
026	6768R-SP01D	01-080-4609 SPRING
027	6768R-DP01A	50-259-3342 LEVER
028	6768R-RP01A	22-027-41054 ROLLER
029	6768R-MP01A	50-219-4033 MOLD
031	6768R-SP01L	01-080-4649 SPRING
032	6768R-EP01A	50-093-4070 HEAD AY
033	6768R-JP01A	50-093-3360 PULLEY
034	6768R-SP01K	01-082-4650 SPRING
035	6768R-PP01A	50-119-4046 PRESS
036	6768R-PP01B	50-160-4108 PRESS
037	6768R-JP01C	50-093-3315 PULLEY
038	6768R-MP01D	50-219-4034 MOLD
040	6768R-SP01M	01-080-4607 SPRING
400	6768R-CP01A	GSE10A2003 SCREW
401	6768R-CP01B	GSE20A2005 SCREW
402	6768R-CP01C	GSE10A2004 SCREW
403	6768R-CP01D	GSL10A1704 SCREW
404	6768R-CP01E	GSP10A2603 SCREW
405	6768R-CP01F	GSP11A2012 SCREW
406	6768R-CP01G	GSE20A2004 SCREW
409	6768R-CP01L	GSD10A2018 SCREW
410	6768R-CP01M	03-300-4056 SCREW
501	6768R-WP01A	GWM19S035035 WASHER
502	6768R-WP01B	GWM17S050035S WASHER
503	6768R-WP01C	GWM40X075010 WASHER
504	6768R-WP01D	GWP21X045020 WASHER
505	6768R-WP01E	GWP12X030040S WASHER
506	6768R-WP01H	GWP23X040020 WASHER
507	6768R-WP01F	GWN21X040040 WASHER
508	6768R-WP01G	GWM19X055035S WASHER

• CD MECHANISM

NOTE) Refer to “SECTION 5 REPLACEMENT PARTS LIST” in order to look for the part number of each part.



LOCA.NO.	PART NO	DESCRIPTION	SPECIFICATION
A26	4405RBE003D	MECHANISM ASSEMBLY	CDM-H1333 LGHEZ CD CHANGER (S
A30	3041RB0002B	BASE ASSEMBLY	PU(F-576MV)
A35	6717RCA001A	PICK UP ASSY	KSM-213VSCM SONY FRONT LOADING
151	3390SB0002A	TRAY	DISC (CDM-H1303)
152	4470SB0011A	GEAR	TRAY B (CDM-H1303)
153	4470SB0010A	GEAR	TRAY A (CDM-H1303)
154	4400SB0001B	BELT	TRAY(CDM-H1303)
155	4680SBP002A	MOTOR(MECH)	ASSY TRAY
156	6871SF21RAD	PWB(PCB) ASSY	3CH MD SENSOR PWB ASSY
157	4974SB0003A	GUIDE	WORM (CDM-H1303)
158	4371SB0002A	SHAFT ASSY	TRAY (CDM-H1303)
159	3390SB0001A	TRAY	LOADING (CDM-H1303)
162	4400SB0001A	BELT	MAIN(CDM-H1303)
163	4470SB0003A	GEAR	PULLEY (CDM-H1303)
164	4470SB0004A	GEAR	LOADING (CDM-H1303)
165	6871SB21RAD	PWB(PCB) ASSY	3CH MD U/D/O/C PWB ASSY
166	4470SB0006A	GEAR	PU DOWN (CDM-H1303)
167	4470SB0008A	GEAR	PU UP-B (CDM-H1303)
168	4471SB0001A	GEAR ASSY	GEAR CAM ASSY
169	4860SB0002A	CLAMP	CLAMP ASSY
170	4974SB0001A	GUIDE	CAM (CDM-H1303)
171	4970SBN002A	SPRING	CAM (CDM-H1303)
172	3040SB0002A	BASE	MAIN(CDM-H1303)
173	6871SD21RAD	PWB(PCB) ASSY	3CH MD CAM PWB ASSY
174	6871SC21RAD	PWB(PCB) ASSY	3CH MD OPEN PWB ASSY
175	4680SBP001A	MOTOR(MECH)	PULLEY ASSY (CDM-H1303)
176	4470SB0007A	GEAR	PU UP-A (CDM-H1303)
177	4470SB0005A	GEAR	MAIN (CDM-H1303)
184	5040R-0073A	RUBBER	DAMPER CDM-300(BK)
185	3040SB0003A	BASE	PU(CDM-H1303)
416	88H-0004	CD MECHA PARTS	3X12X12FNM
417	88H-0002	CD MECHA PARTS	3X9X12FZMY
418	353-025BAAA	SCREW	#NAME?
419	88H-0003	CD MECHA PARTS	3X12X10FZMY
420	353S353F	SCREW	#NAME?
421	6756SBX001A	CD MECHANISM PARTS	SCREW 2.6X10X10XFZMY CDM-H813