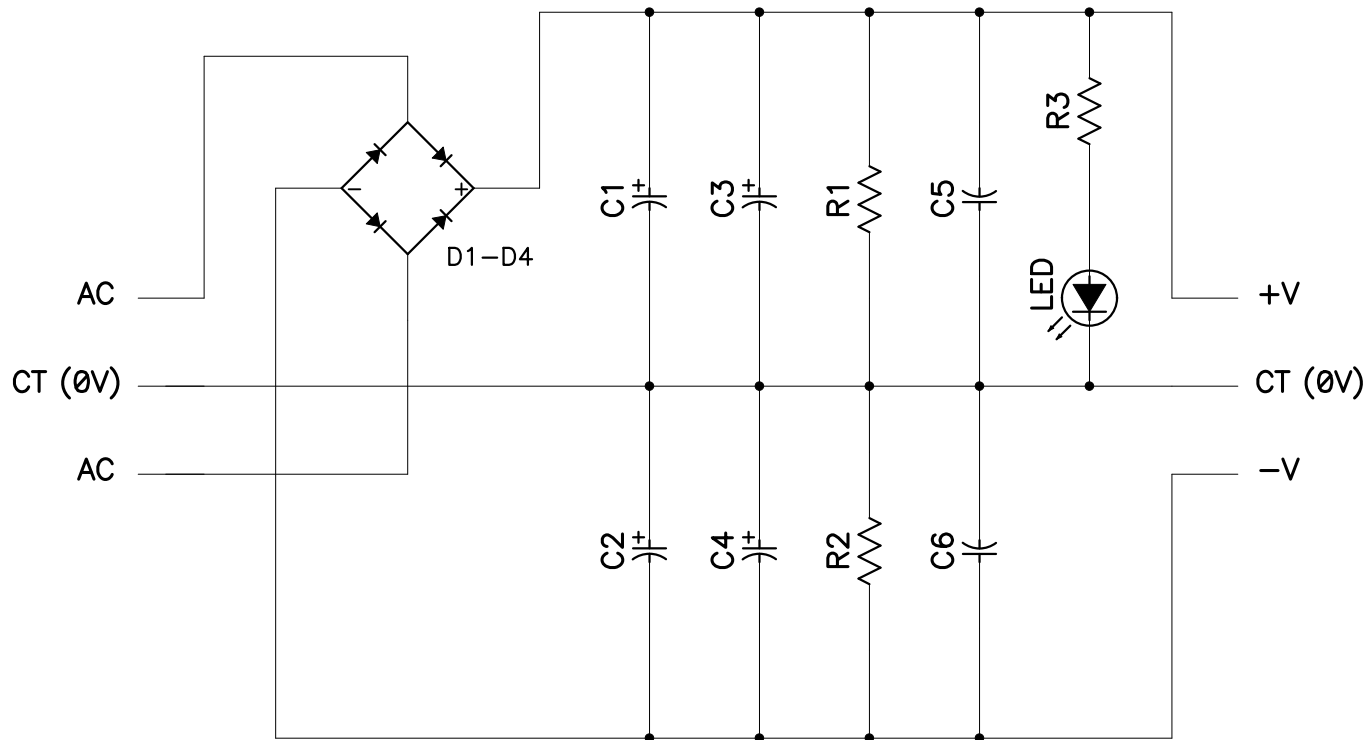


# FONTE DE ALIMENTACAO SIMETRICA

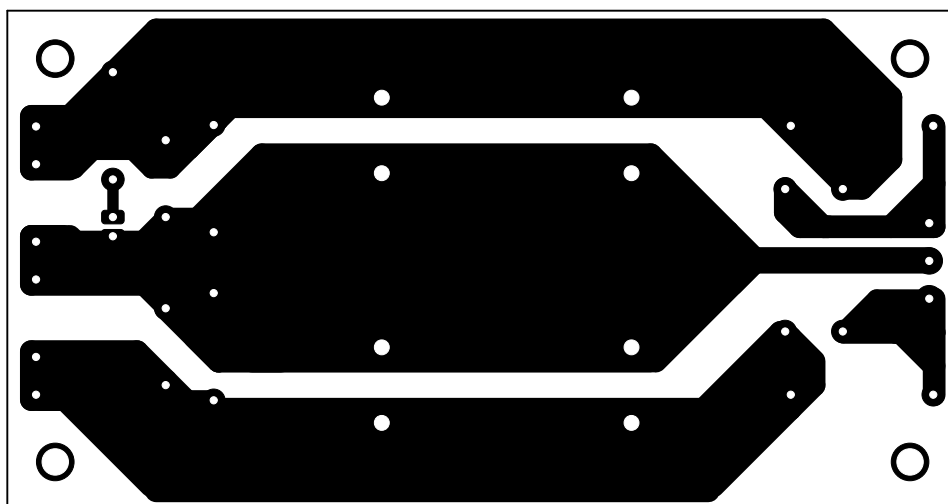


D1, D2, D3, D4 – DIODO 1N5406 (OU SIMILAR)  
 C1, C2, C3, C4 – 4700uF/63V (ELETROLITICO)  
 C5, C6 – 100nF/100V (POLIESTER)  
 R1, R2 – 3K3 2W  
 R3 – \*V. NOTA

O RESISTOR R3 LIMITA A CORRENTE NO LED.  
 CALCULAR DE ACORDO COM A TENSÃO DO CIRCUITO.  
 +/-42VDC – R3 = 2k/2W (2V-15mA)  
 +/-35VDC – R3 = 2K2/2W (2V-15mA)  
 +/-30VDC – R3 = 1K8/2W (2V-15mA)

Title FONTE SIMETRICA		
Size A4	Number	Rev
Date 26/12/2008	Drawn by NABUCO	
Filename	Sheet of	

LAYOUT - FACE COBREADA



DIMENSÕES: 126x66mm

DISPOSIÇÃO DOS COMPONENTES NA PLACA

